

“ Lyttelton harbour review ”

community news from port lyttelton to port cooper

www.lytteltonharbour.info

14 October 2013
E102

Banks Peninsula Councillor Announced

Election Night Celebrations not Premature After All

After a couple of tense days the final election results for the Banks Peninsula Ward have been announced. Congratulations to Andrew Turner who has been nominated the new Banks Peninsula Councillor with a margin of just five votes from challenger Nuk Korako. With the seat coming down to the wire, it does go to show that every vote really does matter. The Review team congratulates voters for having the highest voter turnout in the city elections and for really engaging in this local election. Andrew's win means that Ann Jolliffe now joins the Lyttelton Mount Herbert Community Board team of Paula Smith, Adrian Te Patu, Christine Wilson and Jane Broughton.

Naturally speaking with Andrew his mood is optimistic and he's really excited about the term ahead. He tells us that already the new council team have been meeting and there is a feeling of a very different approach to the way the council will operate over the next term. He talks excitedly about the great ideas some of the new members have. "This will be a great team who are motivated for real change. We want the new Christchurch to be the best place for people it can possibly be. The old city wasn't perfect. This is our once in a life time chance to make things so much better".

We chat over a series of questions that reflect on what the new priorities will be for him, what democracy might look like, what business as unusual looks like and we get a few glimpses of Andrew when he's not doing community work.

Number one thing on Andrew's priority list is getting to know us all better. This list includes new Councillors, CERA, ECAN, Community Board members, Community Groups and individuals. He is open to any invitations. Take advantage of his open door policy and invite him to your events. The more that he knows about your needs and the needs of the Peninsula the more effective he will be as your representative.

Andrew's new democracy is definitely an open door approach. "I am hitting the ground running and want to make sure that the community assets that we so desperately need are brought back into community use sooner rather than later". He is also going to be a working member of both the council and community board teams. He is a real hands on person and wants to be actively involved.

"My 'business as unusual' includes ensuring consents are issued much faster; Master Plan initiatives are completed sooner rather than later; cruise ships feature in Lyttelton Harbour; the District Plan is more reflective of our new reality rather than the old; and earthquake zoning issues are sorted"

"My approach around the Lyttelton Harbour has always been work hard, play hard". And Andrew plans to maintain this approach. When he is not involved in community work he loves travel, the odd weekend away, food and catching up with friends.

Andrew Turner can be contacted on:

021 159 3100 or 328 8204 or email andrew.turner@ccc.govt.nz



Article and Image: Lyttelton Harbour Information Centre



LYTTELTON HARBOUR
INFORMATION CENTRE
PROVIDING QUALITY LOCAL AND VISITOR INFORMATION



Professionals

Kennard Real Estate Limited MREINZ
www.kre.co.nz

Treasures of Lyttelton

Jae Renaut's Images

Memories of past achievements fade over time. In an odd way the Canterbury Earthquakes have enabled us to discover treasures from times not that long ago. Jae Renaut's historic Lyttelton original silver gelatin prints fall into this category.

Unbeknown to many in the early 1980's Jae was commissioned by the former Lyttelton Borough Council to photograph all the historic buildings in the township. The work was to take him over a year and resulted in a wonderful legacy of photos capturing the buildings and their conditions in the early eighties.

Chatting with Jae about the project was a good reminder of how local council used to be. "Gary Broker the former Town Clerk was my good mate. In those days if you had a good idea you could walk into the council and make it happen". So that's exactly what Jae did. He thought it would be good for the town to have a photographic history of all the significant buildings and after chatting to the council and coming up with a brief the project was underway.

A large set of photos were taken using old fashioned, large format cameras. The 5x4 negatives were then developed, and printed over a twelve month period. Jae explained that taking in photos in Lyttelton is never easy. "Light conditions are always tricky here. In fact often there is only a window of half an hour for the perfect light to produce the best photo" he said. His descriptions of how the work proceeded were amazing. When was the last time you remember people taking photos with their head under the black hood behind the camera?

This photographic project had been forgotten by many but the loss of many of our heritage buildings in the earthquakes and the Reconnect theme for Heritage Week became an opportunity to re-discover the wonderful photos Jae took all those years ago. With the support of the Christchurch City Libraries, and in particular the Lyttelton Library, a small set of digitally generated prints of the collection are on display until this Friday, October 25.

While the digital copies cannot match the full range of tones of the original silver gelatin prints they provide a good introduction to the larger collection. Jae feels the photos are a great legacy, saying "they are prints of what used to be, a comfort to the people who live here and a reminder for the people who visit".

A small representative number of the collection is on display at the Lyttelton Library October 14-25. Jae has plans for a project to enlarge and frame selected prints and site them on plots where the former buildings once stood. He's seeking sponsors to help make this happen.

If you are passionate about our former built heritage and would like to support Jae to make this happen please contact him 03 328 7281 or email renaut@xtra.co.nz



Article: Lyttelton Harbour Information Centre
Images: An example of Photos on Display at the Library



LYTTELTON HARBOUR
INFORMATION CENTRE
PROVIDING QUALITY LOCAL AND VISITOR INFORMATION

20 Oxford Street, Lyttelton 8082
P: 03 328 9093

E: infocentre@lyttelton.net.nz
W: www.lytteltonharbour.info

Orton Bradley Spring Fair

Labour Weekend: Sunday 27 October

Fun for children of all ages, this year's Orton Bradley Spring Fair is all set to kick off from 10am to 4pm on Labour Weekend Sunday.

Events for the children includes: Pony rides, Bouncy castle, Water walkers, Climbing ladder and Bungy. Further attractions include Lou Lou the roving clown; Old Machinery Demonstrations; Water Wheel running; Rhododendron Walks; and great live music from June Burney, Sumner Silver Band, Diamond Harbour Singers and 'Something Else'

A huge selection of stall holders will keep everyone occupied including:

Plants & Produce

- Trees for Canterbury – Native Plants
- Diamond Harbour Garden Club – plants – veges & flowers
- Diamond Harbour School – Seed potatoes, seedlings, strawberry plants
- The Seed Warehouse – Horticultural Supplies
- Selwyn Greens – Vege seedlings & herbs. Sandwiches, cordial and sweet things.

Arts & Crafts

- Snap Fashion – woman's clothing & accessories
- Shirts of Men & Boys – Pacific Quilts & shirts
- Glass Dome jewellery & gifts
- Christie Lynn Design – 100% merino cardigan wraps
- Diamond Harbour Camera Club – 2014 calendars for sale & display
- Limited Edition books & art work
- Gollies - canvas paintings, earrings, cards
- Ruth Willis - Pottery
- Botanical art products – Jo Ewing
- The Fossil Shoppe
- Hats, owl cosies
- SAFE – merchandise sales
- Crocheted items, cards, jewellery, plants
- Artwork, girls ribbon dresses, mosaics
- Children toys & clothing, lucky dip, adult clothing, cushions, etc

Food & Drink

- Wigram Brewery
- Braided River Wines
- Baked potatoes
- Bratwurst Sausages – gluten free
- The Naked Baker – Espresso, breads, cakes & slices
- Abu – Melamed's Pita – middle eastern breads made on site Cannon Hill Gourmet
- Mt Herbert Parish – Sausage sizzle, cakes & plants
- American Delight ' Fresh hot mini donuts, water & soft drinks
- Mr Whippy
- The Coffee Guy
- Crazy Spuds – spiral suds on a stick
- FOOBP – Devonshire Teas in "The Cottage"
- Raffle – Diamond Harbour Croquet Club



So, head along with the family and friends, but remember Orton Bradley is a dog-free zone. Orton Bradley Park is a working farm, and also hosting many young children, so they cannot allow dogs on the property.

Normal park entry fees apply.

Article: <http://www.ortonbradley.co.nz/events/spring-fair.html>

Lynnette Baird Licensed Real Estate Agent
P: 03 328 7707 M: 021 224 6637

E: lynnette@realhomes.co.nz
W: www.realhomes.co.nz



Professionals

Kennard Real Estate Limited MREINZ
www.kre.co.nz

contact the lyttelton harbour review

The team at the Lyttelton Harbour Review would love to spread the word about your community group, fundraising efforts, local heroes, business promotions, events and anything else that the local community would like to share. Phone, Email, or Post: Lyttelton Harbour Review, PO Box 94, Lyttelton 8841. **Deadline for any content: Thursday before Monday publication date.**

Lynnette Baird

03 328 7707

021 224 6637

lytteltonreview@gmail.com

Wendy Everingham

03 328 9093

021 047 6144

infocentre@lyttelton.net.nz

Fireworks Testing

Wednesday 23 October : 10am

Fireworks Professionals will again be undertaking some testing next week. They plan on testing 30 items that are likely to produce minor flashes. It is not anticipated they will cause a lot of noise.

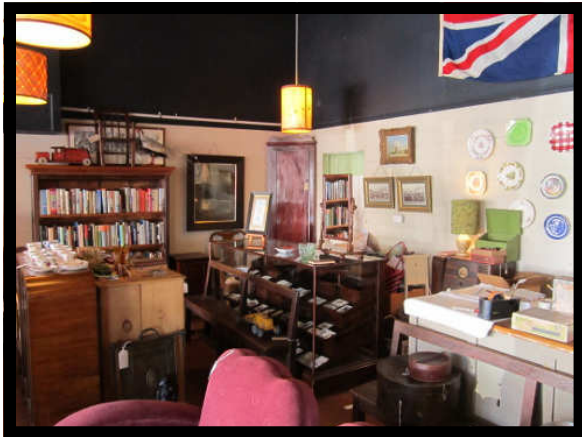
What: Fireworks testing by Fireworks Professionals Ltc

When: 10.00am-11.0am, Wednesday 23 October 2013

Location: Sticking Point, Lyttelton Wharf

Notice: Issued by Lyttelton Port Company, with thanks

Number 48 London Street



Number 48 London Street known to some as London Street Books and Antiques is evolving. Owner Deborah Clark is slowly transforming the former gift and bookshop into an antique and book shop. This business, very much in it's infancy, is literally a work in progress. Even the name is still a bit of a mystery. Deborah has the philosophy "it takes nine months to name a child so this business is still evolving and that means the name will take a little more time to create". One name that she is playing with is Historia. Maybe you have some suggestions for her?

Deborah, from the former London Street Bookshop, is totally dedicated to lovely books, antiques have also been her passion. This new venture and the bigger space gives her the opportunity to join her two passions together. Deborah really enjoys going to the auctions to buy the stock for the shop and then gets great delight placing the pieces in the shop for customers to enjoy. Filled with collectibles, books and lovely lamp shades by local Gavin Buxton, the business is a labour of love.

Antiques, Second Hand Books and all lovely things, visit 48 London Street. Open Tuesday to Saturday 10.00am to 4.00pm 328 8877.

Lyttelton Evolving

Photographer Ross Becker was commissioned by the National Library to take photographs of the impact of the Canterbury earthquakes and recovery from them, and to contribute those to the National Digital Heritage Archive for long term retention.

Recently Ross revisited Lyttelton and commented "there are some really interesting things to see and do in Lyttelton. Some of the now empty sites have been used to inspire and entertain. There's a new community square on the Canterbury Street corner. Go and check out what Lyttelton has to offer."

Images: Ross Becker www.facebook.com/CHCH.EQ.Photos



lyttelton market town

Saturday mornings are never dull in Lyttelton! Enjoy the local markets including the Lyttelton Farmers Market for fresh produce, meat, fish, eggs, honey and yummy baked goods. Check out the Lyttel Arts Space at No.6 London Street. Head up to the Grassy Art and Craft Market for bargain items or unique art items. And be sure to check out the Community Fundraising Garage Sale located up the driveway behind the swimming pool. Its all here on Saturday mornings from 10.00am to 1.00pm, so where else would you want to be!

Lyttelton Cafe SAMOs in Top Ten

What makes a cafe stand out in a crowded market? According to The Press reporter, Abbie Napier, SAMOs cafe in Canterbury Street ticks all the boxes to be worthy of being rated within the top ten cafe finalists for Christchurch, in the Zest Food Awards.

Zest Comments: "When Lyttelton Coffee Company was put out of action due to earthquake damage, its staff started up SAMO as an in between measure while waiting for the rebuild. SAMO therefore offers a lot of what the Lyttelton Coffee Company was all about - friendly service, great coffee, and rustic cabinet food. Once set up in Loons Theatre, Samo has now moved to the other side of Canterbury Street where it is operating out of a courtyard/basement, and making a real go of it. Customers can pop in for a lovingly made coffee or sit down for a homemade style meal. For those who miss their Lyttelton Coffee Company fix, this is the place to get it."

SAMOs Coffee, 3 Canterbury Street, Lyttelton : Open Seven Days from 7.00am

Original Article: www.stuff.co.nz/the-press/christchurch-life/eat-and-drink/9287612/10-of-Christchurchs-best-cafes



Fisherman's Wharf New Menu

Come and try our new summer menu! We are serving all your kiwi and seafood favourites as well as thai, vegetarian and gluten-free options. People are loving our brand new burgers especially the steak and bacon!

We are open Friday, Saturday and Sunday for lunch and dinner and will be extending our hours over summer.

If you are a Lytteltonian come on in and mention this write up, and we will give you a free side of garlic bread with the purchase of any main meal.

Article: Fishermans Wharf, with thanks

Image: LH Information Centre, View from the Deck at Fishermans Wharf

Halloween Stories at the Lyttelton Library

Thursday October 31, 6.00pm

Bubble, Bubble Toil and Trouble....the Lyttelton library is brewing up some good spooky stories for Halloween night. Come along and listen in from 6pm. Wear your Halloween best. Ha Ha!!

Article: Vita Cochran, Lyttelton Library, with thanks



Lyttelton Play Group

If you are new to Lyttelton, or are a local resident with a new baby, this group is such a fun and beneficial opportunity to feel part of the Lyttelton community, and have support and friendships as parents.

Lyttelton Play Group is held every Monday and Wednesday morning, 10.00am to 12.00pm at the Lyttelton Main School Hall with inside and outside play space.

Everyone is welcome. A donation of 50cents per play session goes towards coffee. Kirsty is the new co-ordinator, and she looks forward to meeting some new mums, dads and babies. No need to book, just turn up.



about the lyttelton harbour review

Lyttelton Harbour Review is a community newsletter initiative developed by local Professionals real estate agent Lynnette Baird and Lyttelton Harbour Information Centre chairperson Wendy Everingham. The objective of the Lyttelton Harbour Review is to help keep local residents informed with what is going on in the wider Lyttelton Harbour community. Each week readers can read about community groups; businesses; events; and everything in between. If you have an event, topic, cause, or other, that you would like to share with the harbour community, then we would love to hear from you. Be heard, be seen, be informed - read it or offer it here.

Diamond Harbour Writers Group

October Author: John Riminton

An Egg

"Which came first – the chicken or the egg?" In medieval times, an intractable problem to bemuse the Schoolmen, like: "Did Adam have a navel?" but no real problem now unless it is rephrased as "Which came first – the dinosaur or the egg?"

I like my boiled egg – yolk runny, white firm but it takes an effort of imagination to realise that the same yellow yolk contains all the DNA necessary to differentiate between a Rhode Island Red or a White Leghorn; to provide all the colours for the different feathers or, indeed, if you source your eggs more widely, to determine whether the hatched result will soar through the Andes as a miraculously-sighted condor or slip through the Australian bush as a fairy wren.

Eggs have been around for a long time. After all, G.K. Chesterton claimed that:

"Noah he had an ostrich farm, and eggs on the largest scale

And he ate his egg with a ladle, from an egg-cup big as a pail"

But eggs were around a long time before Noah and ostriches. Evidence is that the first dinosaur eggs date back 175 million years – more than 100 million years before mammals began to make a serious claim for recognition. Not, I think, that they would have made a wholesome breakfast except, perhaps, for another dinosaur. I wonder if they had yellow yolks?

Anyway, next time you poach one, or have a bacon and egg sandwich, just think of all that stored information that you are taking on board.

258 | September 2013



Rotten Radio Launch Party

Lyttelton's Rotten Radio 107.7fm will be hosting their official launch party at Tommy Chang's on Friday 25 October, 7pm. Meet the team behind Lyttelton's newest radio station including Scotty Rotten, X-Ray Charles and Asian Tang. \$10 on the door—a night to remember!

Lyttelton Community Association AGM

The Lyttelton Community Association AGM will be held at 7.00pm on Wednesday 30 October 2013 at the Lyttelton Top Club, 23 Dublin Street. Even if you are not a member, but want to join or see what's happening, come along! All Welcome.

The following existing committee members have agreed to stand for re-election. They are:

Chairman: Ken Maynard
Secretary/Treasurer: Chris Brown
Archivist: Tas Young
Committee: Kirsty MacNab, Sarah van der Burch, Cliff Mason, Mark Penn

Further details please contact Ken Maynard 03 328 9553 or email LCAssn@vodafone.co.nz

Morning Mat Pilates Class

Classes to start on Wednesday 30th October, 9.30am and run through the term, at Naval Point Club. If you are interested in this class, please contact Carolyn Parker 027 676 0903 or email pilatesparker@gmail.com

subscribe to the lyttelton harbour review

The Lyttelton Harbour Review is published every Monday and can be delivered straight to your email inbox. Just send an email with the words "subscribe me" in the subject line, then sit back and wait for the next instalment of local news, events and reviews. If you do not have access to email, but would like read about our local events, Professional Real Estate print hard copies that are available from Thursdays at the Lyttelton Club; Samo Coffee, Fisherman's Wharf, Lyttelton Library and at the Lyttelton Harbour Information Centre on London Street. Or a copy can be delivered to your door, if you live in within the Lyttelton township: Contact Lynnette on 03 328 7707.



Article and Images: www.facebook.com/TheIrishPubLyttelton

Irish Pub Turns One > Again

The Irish Pub on London Street has reached the ripe old age of 1, again for the second time around! The pub closed due to the earthquakes for twenty months and re opened one year ago this Labour Weekend to a bigger better brand new Irish Pub! So why not get your glad rags on and help them celebrate a bigger better future ahead!

As they say "it's Labour Weekend, so need for bed until Monday!"

Event line up includes: special birthday cakes; prize give-a-ways and extra special magical drinks.

Saturday night music: Ignition will be rock the place from 7.00pm, until noise control decides enough is enough.

Sunday afternoon: Jo and Richie will be delivering some soulful sounds to help everyone recoup form the night before and get you back into the mood for another night of Irish Chaos!



Walking Festival

Diverse Opportunities to Enjoy Lyttelton Harbour and Banks Peninsula

This year the Walking Festival – previously the Lyttelton Festival of Walking – expands to offer walks around the whole of Banks Peninsula. The festival celebrates the stunning scenery and intimate communities of the Banks Peninsula over the weekends of 2nd - 3rd and 9th - 10th November.

Walks on offer range from historical township walks in Akaroa and Lyttelton to day and half day tramps and an overnight camp at Quail Island. Dr. Sam Hampton will lead a walk to Panama Rock and introduce the GeoPark proposal for the peninsula. Popular Lyttelton walks such as the Backyard Chickens will be on offer again, and foraging and botanical walks are available in both harbours.

The event, a collaboration with Akaroa District Promotions, Little River/Wairewa Community Trust and the Rod Donald Trust, is designed by local people who love to share their passion for this special place with people from the wider community. Participants will enjoy a refreshing walk and are guaranteed an enjoyable experience as they relax, meet new people and together absorb the stories and atmosphere of this rugged land, right on the doorstep of Christchurch.

The Rod Donald Trust is offering guides and participants the opportunity to enter a photography competition with first prize a double pass for the Banks Peninsula track.

Bookings are necessary for all walks. Grab a programme from your local library or view it online at www.lyttelton.net.nz and give the team a call at the Lyttelton Harbour Information Centre 03 328 9093 or email infocentre@lyttelton.net.nz to book your walks.

Article: Project Lyttelton, Lucette Hindin, Events and Marketing CoOrdinator



Godley Cafe Foodie | Cook Wanted

Godley Cafe in Diamond Harbour is looking for an organised, foodie/cook to come and work with them in preparing and cooking food. This is a part-time position. Please call Michelle on 03 329 4880 or 027 673 5154 for more information.

Sorry, No Review Labour Weekend

The Lyttelton Harbour Review team are going to enjoy the long weekend, so the next edition of the Lyttelton Harbour Review shall be Monday 4 November. Take care folks!



THE EASTERN

SPRING STUDIO BREAKOUT
OCTOBER NOVEMBER 2013

The Eastern Live in Lyttelton

Naval Point Club Saturday October 26

From February 2012 thru May 2013, Lyttelton folk furies The Eastern played 173 shows around New Zealand and Australia. As has been their want over the past six years this was nothing new; touring, playing, driving, is just what they do. It's the way they've kept the day jobs at bay and have managed to make a living singing songs for anyone who'll listen. It's this commitment to coming to play for old and new friends and fans alike that has seen them grow from a band of desperate chancers into one of New Zealand's most loved and respected bands.

Their last album 'Hope and Wire' debuted at #11 in the national charts, climbed to #2 in the New Zealand albums and stayed in the top ten for months after. It featured the APRA silver scroll final five finalist song 'State Houses by the River' and became the inspiration for TV3's upcoming Drama Series 'Hope and Wire' and was a finalist in the New Zealand country music album of the year awards. They've played everywhere from Stewart Island to Kaikohe and have toured with Steve Earle, Old Crow Medicine show amongst others and have opened for Fleetwood Mac on their last NZ tour.

All of that's well and good, but it's on the road where The Eastern fall into their own, everything else comes secondary to the shows they play and the people they meet along the way. It's this attitude which has endeared them to the hearts of many in New Zealand and beyond.

Supposedly off the road for the rest of 2013 to record their new record (due February 2014), they decided to shake off the rust for a short jaunt around both islands. Playing a few choice spots seemed like a swell idea to try out some new songs before they knuckle down and finish the aforementioned platter.

Joining them on the first run of four shows will be New Zealand icon and Warratah's front man Barry Saunders. Barry needs little introduction, being considered one of the country's foremost songwriters EVER and an old school road dog who is most at home sharing his formidable body of work with the good people of these shaky isles. Barry's sure to play classics such as 'Hands of my Heart' as well as new Warratahs and solo tracks alike.

Finishing up the short tour will be Lyttelton comrade Lindon Puffin. A rabid tourer like The Eastern and a wiley raconteur in his own right. Puffin will be serving up new songs and ones from his previous three records. Saunders and Puffin are lively, sharp and master songwriters both so The Eastern are thrilled to be sharing these shows with 'em!

Bookings: www.undertheradar.co.nz/gig/35744/The-Eastern-Spring-Tour.utr



The Handsome Family

Naval Point Club Wednesday October 23

The Handsome family-husband and wife duo, Brett and Rennie Sparks, along with drummer Mike Werner, are playing their brand of Americana at the Naval Point Club on Wednesday, October 23.

Critically acclaimed, they have released ten albums since 1994. The Handsome Family style is a blend of traditional country, bluegrass and murder ballads. Rennie's lyrics have a strong story telling element to them and are enhanced by Brett's music.

This is an amazing opportunity to catch an international act at the top of their game in the most intimate of venues. Not to be missed.

The Handsome Family with support from Tiny Lies.

Naval Point Club Wednesday October 23

Tickets from undertheradar.co.nz | Pennylane | Mondo Vino in Lyttelton

think lyttelton harbour

Support the 'buy local' cause and your local community by registering your business with us, or by shopping at the locally owned businesses. Buy their products. Eat their food. Use their services. In turn, these locally owned and operated businesses will continually pump your hard earned dollars back into the local economy by way of employment, purchases and taxes to create a stronger more resilient community. You gotta love that!



Cat Tunks and BlackSandDiva Live

Wunderbar Thursday 24 October : 8pm

Bring in those summer vibes and kick off your Labour weekend Thursday night at Wunderbar with the sassy soul sounds of Auckland based BlackSandDiva. Its been almost four years, since Cat Tunks & BlackSandDiva headed to the heartland with their slick, soul funk jazz.

Pre earthquake, selling out Fat Eddies & the Harbour Lights and playing to a faithful southern crowd that followed their tour on from the Woolston Nelson Jazz Festival. That was in the bands early beginnings, and now, two acclaimed albums (Rawahi finalist Best Urban Soul/Jazz album Waiata Maori Music Awards 2013) and just fresh in the door from a Sept 2013 tour of Germany, Cat Tunks is set to hit the south again.

Spending more time performing out of town than in, and with a life well lived on Auckland's wild west coast surf town of Piha Beach, is why the locals gave this well seasoned performer the crown of 'Black Sand Diva'. The influence is apparent, a westie girl with a sassy jazz style, a band with their own unique brand of Aoteaora soul, Whiskey smooth vocals, sophisticated piano stylings, fat beats and South Pacific reggae groove. Aretha Franklin meets Joan Jett, Diana Krall, and perhaps had a cup of tea with a more sober Amy Winehouse along the way.

Playing the Wunderbar for one night only with local band The Phonolites in the supporting role on Thurs Oct 24th, Cat Tunks and BlackSandDiva then move on to Queenstown Jazz n Blues Festival this Labour Weekend to get the lay of the land before final plans for the next Nationwide tour kick off for Autumn 2014. Wunderbar - 8pm - \$15.00 at the Door. We have one double pass to Cat Tunks and BlackSandDiva to give away - simply email your name and contact details to toitoimusic@gmail.com

Marlon Williams LIVE

Tommy Chang's Saturday 2 November :8.30pm

Have you heard: Marlon Williams will be back in port at the end of the month following his New Zealand tour with The Grand Old Hayride. He hasn't forgotten about his home town and he will be back on NOVEMBER 2 to play his beautiful solo show at TOMMY CHANG'S BAR. Head on down about 8:30pm - \$10 on the door - the place to be!

Lyttelton Farmers Market

It's springtime and what better way to celebrate than with freshly picked produce and great company. If you've been in hibernation for the winter now is times to get out in to the sunshine and treat your body to local produce, good music and lots of laughter!

Product Of The Month

Cheviot Hills Very Merry Summer Jam

A silky jam, with a glorious rich red colour that can be used in a marinade or when deglazing a pan. It looks and tastes stunning on warm croissants. Cherries add sweetness and richness, blackcurrants add depth and balance, gooseberries add a little tartness too, and redcurrants add sweetness too. The finishing touch is a dash of spirits.

Image from Cheviot Hills

Clean and Green

Over the coming months Lyttelton Farmers market will be making a huge effort to clean up our act! The more support you can give us with this the better the market will be. Each month we'll be posting new ideas and changed ways on our Facebook Page and through our newsletters. This month we would like you to really think when you take a plastic bag and to make it easy we have introduced the below:

Borrow A Bag

Forgotten your reusable bag? not to worry ,come and see us at the info stall and we can give you one to borrow just drop it back the next week or when you remember. Also if you have lots of extra bags please drop them to the info centre.

Lyttelton Farmers market is a Project Lyttelton initiative for more information please visit: <http://www.lyttelton.net.nz/>

looking for reading material

A book swap has been operating from the Lyttelton Harbour Information Centre for some time. Thank you to all the lovely residents who keep dropping books in. This service is available to all local residents, simply just pop in, choose a book, and then return it or another when you are finished. Borrow or swap - it's your call. If you are looking for reading material on economics, the transition movement, sustainability, alternative currencies and community development then check out the LIFT Library that has recently started. Contact Juliet Adams on 328 8139 for more information.

Irish Pub

Saturday 26, 7.00pm
Sunday 27, 3.00pm

Saturday Night Live Music with Ignition
Live music with Jo and Ritchie

Free Event
Free Event

Lyttelton Club

Every Friday, 7.00pm
Sunday 27, 7.00pm

Live Music
Live Music: Don't Tell Moma

Free Event
Free Event

Naval Point Club

Wednesday 23
Saturday 26
Friday November 29

Handsome Family
The Eastern with Barry Saunders - Warratahs
Charley Pride, Kelly Joe Phelps and the Fog Horn String Band

Tickets Mondo Vino
\$25.00 Tickets UnderTheRadar
\$

Porthole Bar

Wednesday 23, 8.30pm
Thursday 24, 8.30pm
Friday 25, 7.30pm
Saturday 26, 8.30pm
Sunday 27, 3.30pm

Lindon Puffin Live
Medway Roots
DJ Bones
Shaya King and Roseanna Burdett
Afternoon Jam with Barry

Free Event
Free Event
Free Event
Free Event
Free Event

Tommy Changs

Sunday 27, 8.00pm
Saturday 2, 8.30pm
Sunday 3, 3.00pm

Lyttelton Poets: Andy Coyle, Ben Brown, Rebecca Nash
Cairan Fox, Helen Back +Sonic Guitarist Paul Timings
Marlon Williams Live
Fortnightly Vinyl Sunday School

\$5 Door Sales
\$10 Door Sales
Free Event

Wunderbar

Thursday 24, 8.00pm
Tuesday 29, 7.30pm
Monday 4 November

Cat Tunks and BlackSandDiva with the Phonolites
Artist Showcase and Open Mic Night
Lawrence Arabia

\$15 Door Sales
Free Event

Pilates Class in Lyttelton

Dates: Monday, October 14th - Monday, December 16th

Cost: \$100 for the 10 week term or \$15 drop-in

Payment: Cash, cheque or internet banking (BNZ 02-0820-0109247-83)

Time: 7.00pm to 8.00pm (please note the slight change in time)

Place: Naval Point Club, Lyttelton

To Bring: Wear comfortable clothing and either socks or bare feet are fine. Please bring a yoga or Pilates mat. We do have a small number of mats to lend out for those that do not have a mat to begin with or have forgotten there's on the night.

Details: More details please contact Jennifer Rice Mobile: 027 2041224 or Home: 03 328 7002

c'mon get involved

Lyttelton is known for its culture of volunteer activity and community participation. If you have ever had the thought that you would like to be more involved in the local community, but you are not sure where to go, or who to talk to? Start by having a conversation with the team at the Lyttelton Harbour Information Centre, as they can give you some advice on the many types of great volunteer organisations here in Lyttelton. If you are passionate about elderly care, sustainability, youth culture, harbour activities, heritage, radio, business development, fundraising, or just about anything - then there is a group who would love for you to be involved!

Labour Weekend Events Nearby

Saturday October 16

150 years of rail. Rail exhibitions and displays, plus sprinter rail car journeys from Ferrymead Heritage Park to Lyttelton. More information visit www.ferrymead.org.nz or phone 03 384 1790.

Sunday October 17 and Monday October 28

Little River Flower Garden Trail \$10 per person, children free. Tickets available from the Craft Station or email littlerivercraftstation@gmail.com

Christchurch Retaining Walls Group

A website has been set up as a point of contact for people in Christchurch who are having issues with retaining walls. If you would like to join the group, you can visit their web site and complete an online contact form. The only criteria for joining the group, is that you have a retaining wall of any type protecting your property, or which is your responsibility. The purpose of our group is to share information regarding EQC retaining wall settlements. For more information read some of the stories on the website. And if you know how EQC are calculating Indemnity Value, please get in touch! www.retainingwalls.kiwi.nz

Short or Long term Accommodation in Lyttelton

Double room with a view, walk in wardrobe. Fully furnished, linen provided if short term. Lock on door of room. Clean and tidy in a warm and sunny house. Nice garden, decks and amazing views. Short walk to shops. Tidy working professional people wanted - suite couples. Not suitable for children. No pets. Available now. Cost negotiable. Contact Michelle 328 8020 or 0274160625

Accommodation in Lyttelton Wanted

Mature woman looking for accommodation in Lyttelton. Would love a sunny garden. References and good job. Please call 022 104 4546 or email linseed@es.co.nz

Looking for long term accommodation. Ideally a sleep out or something self contained.. Can be small and rustic and if it gets sun I don't need power. Limited by a small budget. If you can help please leave a message for Sacha on 328 9093.

Woolston Available to Rent

The Lyttelton Review does not normally list properties outside of the harbour, but local Lyttelton couple Aaron and Stephanie have a little house to rent in Woolston, which they have used while they were out of their home for earthquake repairs. If you are struggling to find something short term, and nearby, this might be an option for you. And it's available now:

Fully furnished, three bedroom home with sleepout, single garage, heat pump, fully fenced. Walking distance to Cassels—the throbbing hub of faux-pawa! Pets are negotiable [how great is that] and walking distance to the No.23 and No.28 bus routes [so you can easily head back to Lyttelton].

For more details contact Aaron via email az.j.dann@gmail.com

Trick or Treat

Halloween is Thursday 31 October. Don't be surprised when you see ghosts, gremlins or other such odd characters roaming the streets in search of candy!

diamond harbour writers group

The Diamond Harbour Writers Group are an informal group that encourages members to develop their skills in writing prose and verse. Meetings are held the third Wednesday of the month, in the afternoon, at a private home.

They also have a blog site: diamondharbourwriters.blogspot.co.nz which includes more their great work, and much more information about them. For more details please contact John Riminton 03 329 4329 to enquire further.

Wine and Sound

A Multi-Sensory Tasting Experience

The Auricle Sonic Arts Gallery invites you to discover the surprising synergies between wine and sound in this multi-sensory tasting experience hosted by leading local wine writer and sound artist, Jo Burzynska (aka Stanier Black-Five). This is a fundraising event for the city's first ever sonic arts gallery and is part of the Festival of Transitional Architecture.

Through pairing a diverse selection of delicious wines with a wide array of music, Jo will explore the harmonies and discords that can be created by different combinations and illustrate how the perception of a wine's flavours can be altered by what we're listening to when we drink it.

As writing about wine Jo is also an active sound artist, with her work in recent years increasingly combining her interests in music and wine in a series of multi-sensory pieces and workshops.

The Auricle is a new sonic arts venue currently being set up by the Cantabrian Society of Sonic Artists in New Regent Street. This will include the world's first wine and sound bar, whose wine list will be curated by Jo to complement the various exhibitions and music played in the space. They are currently raising the extra funds required to open this not-for-profit artist run space later this year.

Arrive early, and you can hear the sounds of the vineyard in the city, as Jo plays her work Oenomatopoeia created from the sounds of harvest at Pegasus Bay Vineyard. There's also the opportunity to stay on for a glass of wine from the night's wine sponsor's Pegasus Bay to toast this first event at The Auricle and Rekindle's Whole House Reuse launch, the latter which is happening at the gallery following the tasting: <http://festa.org.nz/whole-house-reuse/>

When: Friday 25th October, 6pm
Where: The Auricle, 35 New Regents Street, Christchurch
Ticket: Booking is essential via Jo at jo@joburzynska.com or mobile 021 776161
Price: Suggested donation of \$25, with all proceeds going to The Auricle.

Article: Jo Burzynska MA AIWS | Wine editor - Viva, New Zealand Herald

Architecture in the New Christchurch

Various Speakers, Five Part Series

Started 16 October, 1.30 - 2.30 pm, 5 Wednesdays, gold coin donation:

23 October

South Pacific Solar Paradise: A city for all seasons – Roger Buck, a Christchurch-based architect with particular interests in people and where and how they live

30 October

David Hill, Wilson and Hill Architects

6 November

Transitional City: Time and Architecture in post-quake Christchurch – Barnaby Bennett, Director of Freerange Press, Architecture Graduate, and PhD Candidate

13 November

'Hung up on the gallery': From the McDougall's classical temple to the Christchurch Art Gallery's warehouse for art – Anna Crighton, Chair, Canterbury Earthquake Heritage Buildings Fund, and President, Historic Places Aotearoa

For further information or to enroll, phone 366 0285 or email: admin@cwea.org.nz or go online to cwea.org.nz



.....LUTTELTONS TOMMY CHANG'S AND

X ROTTEN RADIO

107.7FM

PRESENT LUTTELTON LURCH PARTY!.....



X-RAY CHARLES ASIAN-TANG

OCTOBER

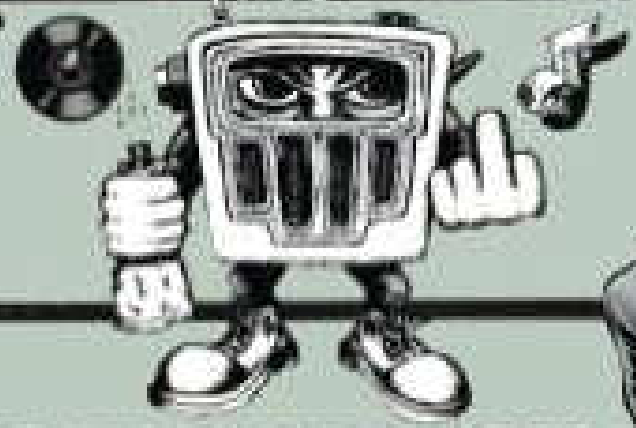


8:1000 DJs (OF DIFFERING SKILL LEVELS AND QUALITIES!) MAKING ALL SORTS OF NOISE

HELP US RAISE CASH FOR A COMPRESSOR!



TOMMY CHANG'S
48 LONDON ST LUTTELTON



ROTTEN RADIO 107.7FM
LUTTELTON.....(MFC)



UP WITH PEOPLE
PRESENTS

The Handsome Family

NEW ZEALAND 2013
TOUR



OCTOBER 23
LYTTELTON
NAVAL POINT
YACHT CLUB

TICKETS FROM UNDERTHERADAR.CO.NZ,
MONDO VINO & PENNY LANE

NEW ALBUM
'WILDERNESS' OUT NOW
WWW.HANDSOMEFAMILY.COM

"Wilderness is a world of wonder"

Simon Sweetman

CD OF THE WEEK

Sunday Star Times

"No one does it better

- in fact, no one else does it all"

Nick Bollinger, The Sampler

WWW.UPWITHPEOPLE.CO.NZ

**NAVAL POINT YACHT CLUB
LYTTELTON HARBOUR**

PRESENTS · IN CONCERT



**⚡ THE ⚡
EASTERN**

**NZ'S PREMIER
HARD TRAVELLIN' FOLK SINGIN' ROOF RAISIN' STRING BAND**

WITH SPECIAL GUEST

BARRY SAUNDERS

WARRATAH · KIWI COUNTRY LEGEND · GENTLEMAN



**OCTOBER 26TH
SATURDAY NIGHT**

DOORS EIGHT THIRTY

**TICKETS ON SALE FROM UNDERTHERADAR.CO.NZ
FORTEASTERN.COM FACEBOOK.COM/FORTEASTERN**



Cat Tunks & BlackSandDiva

WITH SPECIAL GUESTS
THE PHONOLITES



WUNDERBAR

OCT 24/13 - 8PM - \$15

WWW.WUNDERBAR.CO.NZ

"a wild kind of Aotearoa soul, with a jazz n funk backbone, whiskey smooth vocals, and plenty of attitude, a unique brand of South Pacific sophistication..."



blacksanddiva
BlackSandDiva.com



facebook.com
/phonolites

LYTTELTON CLUB EVENTS

shhhhh....

"don't tell mama"

**popular local act, playing here live!
don't miss a great night out**

27 october 2013

saturday

7.00pm

23 dublin street

free event



Not a Club Member? Join the Lyttelton Club and enjoy great membership benefits like this free live music event. Three month trial memberships* available, ask at the bar.

oxford st central market lyttelton

saturdays

9am- 1pm



antiques, curios, artisan creations
music and more

Jae Renaut's Lyttelton

An exhibition of digital reproductions of Jae Renaut's original silver gelatine prints of commercial and residential buildings in Lyttelton, photographed 1981-82.

Lyttelton Library
14 October – 25 October

 **Reconnect**
experience heritage
Fri 18 - Sun 20 October 2013



Sculpture on the Peninsula

Proceeds to Cholmondeley Children's Centre
Organised by the Lombardy Charitable Trust

Grand Opening

The South Island's largest Sculpture Exhibition

5.00 – 8.30pm Friday November 8

Loudon Farm, Charteris Bay Rd,
Teddington, Lyttelton Harbour

Music from The Carmel Courtney Trio. Innovative catering from Crater Rim Cuisine, local wines and craft beers. Roving circus performance from The Loons.

Presentation by Lara Strongman of the Sculpture on the Peninsula Award of \$10,000.

"The Chairs" created by artists Diana Adams, Jacqui Gibbs Chamberlain, Bill Hammond, Gill Hay, Roger Hicken, Cheryl Lucas, Doug Neil, Phil Price, Llew Summers, Dean Venrooy, Mark Whyte, and Tim Wraight auctioned by Joe Bennett.

Sculptural work on exhibition from New Zealand's established and emerging artists including:

Matt Akehurst, Gary Baynes, Graham Bennett, Madeleine Child, Barry Clarke, Paul Dibble, Egg et al, Alison Erickson, Leah Fraser Henderson, Hannah Kidd, David Lloyd, Sam Mahon, Rory McDougall, Adrienne Millwood, Chris Moore, Zoe Nash, Juliet Novena Sorrel, Linda Pringle, Aaron te Rangiao, Hamish Southcott, Sian Torrington, Deborah Walsh, Marion Wassenaar, Chris Weaver, Greg Yee.

HARMANS
LAWYERS

WILKIE + BRUCE
ARCHITECTS LTD

UNDERGROUND
COFFEE COMPANY

FOX
ASSOCIATES
design | develop | deliver

agriseeds
superior plantures



intergen
MULTIPLY YOUR BUSINESS



C. LUND & SON LTD
BUILDERS • JOINERS • CONTRACTORS

Tickets can be purchased on our website
www.sculpturenz.co.nz
from Ballantynes, Cashel Mall or by post.

Order Form

Please complete this form, enclose a cheque and post to:
Sculpture on the Peninsula, 47 Reserve Tce, Lyttelton 8082
or tickets can be purchased from our website
www.sculpturenz.co.nz

Phone 03-328 7402 or 021-0227 1157

Please send tickets for Grand Opening to:

Name _____

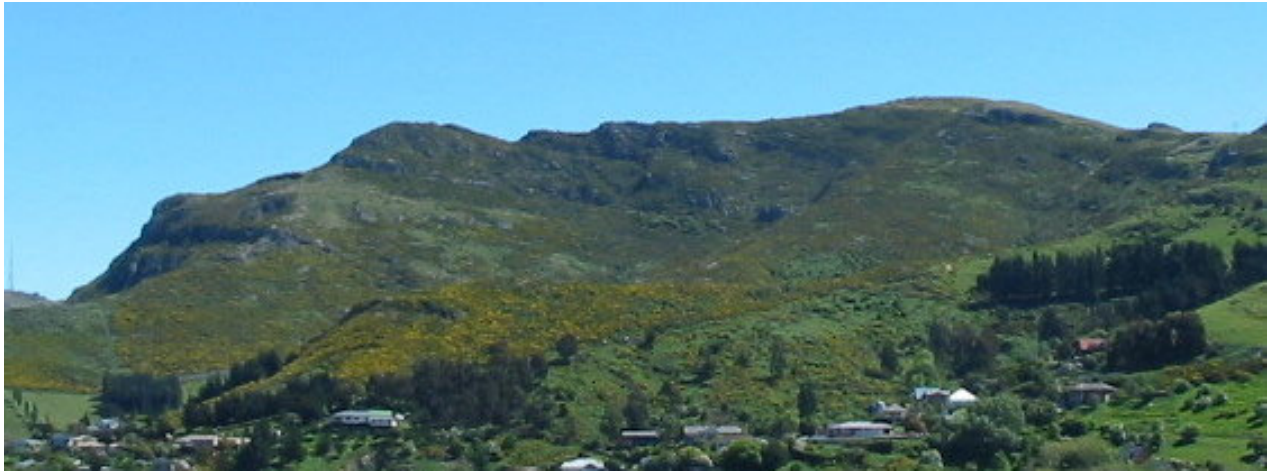
Address _____

I enclose my cheque for _____ tickets @ \$65 each

TICKETS

\$65
per person

per person



Chance to help run our local reserves

You probably know that there are several reserves close to Lyttelton.

One is Whaka Raupo, on the west of the town, 87 ha, between the Bridle Path and Cass Bay.

Another is Urumau, 26 ha, on the east side, above Foster and Gilmour Terraces. You may have walked there.

The City Council owns these two reserves and an elected committee of interested residents manages them. The Committee is a sub-committee of the Lyttelton/Mount Herbert Community Board and is assisted by Council staff.

An election to the Committee is going to be held on the 11th November this year.

There is a lot of work involved in keeping the reserves usable by residents. The Committee makes policy for the reserves; organises and carries out weed control; works with schools and residents to

forms walking and mountain bike tracks; replant the reserves; undertakes animal pest control; recreation opportunities and works towards enhancement of these natural spaces and local biodiversity.

If you are interested come along to the **Lyttelton Club, corner Dublin and Winchester Street, Lyttelton, 7.30 pm 11th November 2013.**

Don't think that you have to campaign or make a speech. At the meeting you can nominate yourself or someone else.

We try to accommodate everyone who is interested. Membership of the Committee is for three years.

We have about six meetings a year and occasional work parties.

If you are only interested in doing practical things like weed busting or planting, not in attending meetings, come along and/or let us know.



“Capture the Magic”



Banks Peninsula Walking Festival **Photographic Competition** *Entries close on 22 November 2013*

The Rod Donald Banks Peninsula Trust aims to get more people engaging with and appreciating the special landscape, environment, culture and heritage of beautiful Banks Peninsula. As part of its work the Trust is developing new walking opportunities on the Peninsula and documenting all the walks with comprehensive track maps for visitor centres, brochures and web information.

The Trust is now seeking your help to build up a fantastic image library to capture the magic of exploring Banks Peninsula on foot. We invite you to submit photos showing people of all ages, including children and young people, enjoying themselves in a natural way as they explore its landscape, environment and special places on foot.

You may enter as many photos as you like in our Photographic Competition run in conjunction with the Banks Peninsula Walking Festival. Our judges will review them and best ones will be selected for use on our website or published materials. The top three photographers will be awarded with these great prizes:

First Prize

Tickets for two on the four day private Banks Peninsula Track

Second Prizes

**“Plant life on Banks Peninsula” by Hugh Wilson and
“Shelter from the Storm”, by Rob Brown, Shaun Barnett and Geoff Spearpoint**

The photographic competition is open to all amateur and professional photographers. See conditions and entry form overleaf.

Terms & Conditions of Entry

The competition is run by the Rod Donald Banks Peninsula Trust. By submitting an entry in the competition, entrants agree to the following terms and conditions.

1. All entries must have been photographed on Banks Peninsula.
2. All entries must include people engaged in walking or related activities (such as picnicking). Judges will be looking for natural shots rather than posed groups.
3. Entries must be digital (jpg, tif, bmp formats) and are to be submitted by email to secretary@roddonaldtrust.co.nz or on a CD mailed to Rod Donald Banks Peninsula Trust, PO Box 5, Little River, 7581.
4. Entries are to be received no later than 5pm on Friday 22 November 2013.
5. The entrant must be the sole owner and author of copyright and all other intellectual property in the material submitted to the judges. Each entrant agrees to indemnify Rod Donald Banks Peninsula Trust from and against all claims, demands, expenses and damages that Rod Donald Banks Peninsula Trust may face or incur as a result of any breach of this condition.
6. Copyright on photographs submitted will transfer to the Rod Donald Banks Peninsula Trust. The Trust will include them in its photographic library and may use them, without any payment obligation, on its website, in materials published by the Trust, and share them with partner organisations for the purposes of promoting walking, the environment and sustainable management of Banks Peninsula. The name of the photographer will be credited.
7. The judges will be appointed by the Rod Donald Banks Peninsula Trust. The judges' decisions will be final and not subject to appeal or correspondence. Results will be announced in early December 2013.

Please ensure you fill in and include the details below when you submit your entry:

.....
Photographer Name:

Photographer Address:

Phone number:

Email:

Indicate whether you are a Professional or Amateur photographer:

Date & Location of Photo:

Declaration

I have read the Terms & Conditions on this entry form and agree to abide by them.

Entrant's signature

“c'mon get involved”

volunteering to build a stronger community

October 2013

Lyttelton Harbour

Community Garage Sale

All donations of good used, or new, household items greatly accepted at Project Lyttelton 54a Oxford Street. Please do not donate items that cannot be sold, as this increases our costs trying to take unwanted items to the charity barn, or worse still the rubbish depot.

Governors Bay Pre-School Music

Preschool music classes run on Thursday mornings during school term, 9:15 - 10am in the Governors Bay School library. Come and join us for singing, dancing and musical games. Cost \$3.50. All under 5s welcome, please bring a grown-up with you. Contact Mel Dixon 329 9908.

Lyttelton Community Association

New members welcome. As an issues based organisation, we do not hold regular meetings. If you would like to be advised of when the next meeting will be held, or have an issue to discuss, please email us at LCAssn@vodafone.co.nz or phone Ken Maynard 03 328 9553.

Lyttelton Community House

Meals for the elderly continue to be prepared and delivered daily. If you know of any elderly residents who need this service, or would like to volunteer to assist, please contact Christine or Courtenay 03 741 1427.

Lyttelton Harbour Basin COMMUNITY Civil Defence

New members welcome. Meets every third Wednesday of the month 7.00pm - 9.00pm at Lyttelton Main School. To become involved contact the acting Lyttelton leader Wendy Everingham 03 328 8359 or 021 047 6144 .

Lyttelton Harbour Business Association

For more details visit: www.lytteltonharbour.co.nz

Lyttelton Harbour Information Centre

Monday to Saturday 10.00am to 4.00pm; Sunday 11.00am - 3.00pm.

Lyttelton Harbour/Whakaraupo Issues Group

Focus is to improve the natural environment and habitat of the harbour and harbour basin. Meetings are every second month. All welcome. Contact Claire Findlay (Chair) 03 328 8930, Melanie Dixon (Support) 03 329 9908 or visit www.ecan.govt.nz/lhwig

Lyttelton Lions

Meet on the 2nd Tuesday of each month at Community House at 7.30pm. Anyone interested in becoming involved, or anyone who would like to learn more about this organisation, is most welcome. Contact Mary Jamieson 03 328 8523 or Dave Evans 03 379 6675.

Lyttelton Historical Museum Society

Lyttelton Museum committee is developing a concept plan for the re-building of Lyttelton Museum . Meetings held once a month. New members, donations or any other support is welcomed. Lyttelton Museum, PO Box 95, Lyttelton. 328 8972 lytteltonmuseum@xtra.co.nz

Lyttelton Reserves Management Committee

Reserves Committee meets on a regular basis to make decisions about the management of the reserves. It organises weed control and planting programmes that include public and schools planting days. To be involved email the group at reserves@lyttelton.net.nz.

Lyttelton Time Bank

Located within the Lyttelton Harbour Information Centre, 20 Oxford Street, open from 10.00am to 4.00pm, Monday to Friday. Or contact via email timebank@lyttelton.net.nz or phone the Information Centre on 03 328 9093.

Lyttelton Toy Library

Now at 25 Canterbury Street. Sessions every second Saturday 10.00am to 12noon. Range of 500+ toys for children aged 0-5 years. Toys large and small, ride-ons, puzzles, games and dress-ups to borrow. Join anytime \$42.00 per year. Toy Librarian: Kimberly 03 384 8400 .

Lyttelton Volunteer Fire Brigade

Meets for training and maintenance every Thursday night from 7.00pm at the temporary station in London Street. If you are interested in joining, then pop on in.

Lyttelton Youth Centre

Youth Centre/Community House, 7 Dublin Street, Lyttelton. Contact Christine 03 741 1427 for further details.

Plunket Playgroup

The Plunket Playgroup can be found at Lyttelton Main School, every Monday and Wednesday, 10.00am to 12noon. 50 cents donation and everyone is welcome. Contact Kirsty 021 234 3689.

Project Lyttelton

The Portal, 54a Oxford Street, Lyttelton [located behind the Swimming Pool]. Office 03 328 9243.

“business directory”

support our local businesses

October 2013

Lyttelton

Abbraccia Bellydance	41 Voelas Road [West School]	03 328 8883	Paige 021 999 848
Acupuncture Therapy	18 Oxford Street	03 328 9053	Robin Kerr
Alexander Technique	Private Address	03 328 8968	Belinda Walker
Alterations and Ironing Service	Oxford Street	Private No.	Wendy De Backer 021 0288 1466
Bank of New Zealand	56 London Street	0800 80 04 68	Trish, Kelly, Donna
Banks Peninsula Accounting	PO Box 83, Lyttelton	03 328 7231	Chris 021 280 0086
Beauty by Carly	Private Address	Private No.	Carly 021 294 5676
Bells Pharmacy	50 London Street	03 328 8314	
Body Kinetics - Gym Fitness	Oxford Street	03 328 7002	Jen 027 204 1224
Christchurch Council Service Centre	15 London Street	03 941 8999	Debbie/Patricia
Christchurch Yoga	Private Address	03 328 8889	Rebecca 021 071 0336
Civil and Naval	16 London Street	03 328 7206	Open 7 Days 11am to late
Coastal Living / Picture Framers	34 London Street	03 328 7350	
Coffee Culture	18 London Street	03 328 7080	
Dandy Designs - Web Business Develop	Private Address	03 328 8646	dana@dandydesigns.co.nz
Diamond Harbour Ferry	B Jetty, Lyttelton Wharf	03 328 9078	
Dockside Apartments	22 Sumner Road	03 325 5707	Grant / Kathy
Everest Indian Restaurant	2 London Street	03 328 8185	Parminder Singh
Fishermans Wharf	39 Norwich Quay	03 328 7530	Friday to Sunday
Freemans Restaurant	47 London Street	03 328 7517	
Frog Web Works	14 Winchester Street	Private No.	Graeme 027 473 5018
God Save The Queen	33 London Street	03 328 9493	Wed-Sun 10.00am to 4.00pm
Ground Gourmet Foods, Catering	Lyttelton Farmers Market	022 476 8633	info@ground.co.nz
Harbour Co-Op	12 London Street	03 328 8544	
Harris & Turner	8 London Street	03 328 7358	Mon - Sat 10am to 6pm
Hands on Health Nutrition Massage	Private Address	Private No.	Rebecca 027 494 6349
Himalaya Design	20 London Street	03 328 7600	Open 7 Days 10am - 4pm
Home Based Child Care	Private Address	03 328 7217	Marcia 021 236 1682
Home Based Education	Private Address	03 328 9229	Jen Skjellerup
Irish Pub	17a London Street	03 328 8085	Ross, Janet, Roger and Sandy
Jack Tar Sailing	West Side, No.7 Wharf	03 389 9259	Mike Rossouw
Land Arch Landscape Architects	13 Exeter Street	03 328 8882	dan@landarch.co.nz
Learn 2 Sail - Dudley Jackson	Cressy Terrace	0800 724 5464	www.learn2sail.co.nz
Leslies Bookshop	18 Oxford Street	03 328 8292	
London Fish and Chips	34 London Street	03 328 8819	
London Street Books	Pending New Location	03 328 8088	
London Street Dairy	34 London Street	03 328 7358	Open 7 Days
Lyttel Beauty	32 Voelas Road	03 328 7093	www.lyttelbeauty.co.nz
Lyttelton Bakery	6 Norwich Quay	03 328 9004	
Lyttelton Builders Limited - Office and Yard	16 Canterbury Street	03 328 9305	Peter Tocker 021 862 537
Lyttelton Harbour Information Centre	65 London Street	03 328 9093	
Lyttelton Library	35 London Street	03 941 7923	
Lyttelton Health Centre	18 Oxford Street	03 328 7309	
Lyttelton Physiotherapy	18 Oxford Street	03 328 8111	
Lyttelton Recreation Centre	25 Winchester Street	03 941 5656	
Lyttelton Sea Foods	6 Norwich Quay	03 328 7628	
Lyttelton Service Station	1 Canterbury Street	03 328 8749	
Lyttelton Shuttle	Airport, Tours, Anywhere	Private No.	Linda 021 254 4986
London Street Books and Antiques	48 London Street	03 328 8877	Open Tue-Sat 10am to 4pm

“business directory”

support our local businesses

October 2013

Lyttelton [continued]

Lyttelton 'Top' Club	23 Dublin Street	03 328 8740	
Mac Todd Solicitors	50 London Street	03 328 9992	Ray Blake 021 43 66 50
Maids of Ink	31 London Street	03 328 9263	Basement Level
Min Sarginson Real Estate	53 London Street	03 328 7273	Min Sarginson 027 432 0327
Mondo Vino	42 Norwich Quay	03 328 7744	
Orbit Architecture	5 Norwich Quay	03 328 9294	Neil Aitken 021 155 5601
PedalOn Bicycle Service	2 Exeter Street	03 328 9246	021 055 6865
Port Electric : Computer Appliance Repair	Private Address	03 328 8099	Ken 021 117 6848
Port Hills Auto Centre	42a Norwich Quay	03 328 9980	
Porthole Bar	40 London Street	Private No.	Mike 021 328 977 [Tue-Sun]
Portico	33 London Street	03 328 8088	Tue-Sun 10am - 4pm
Port View Restaurant	23 Dublin Street	03 328 8740	Wed-Sun + Sat-Sun Brunch
Professionals Real Estate	36 London Street	03 328 7707	Lynnette Baird 021 224 6637
Project Lyttelton Office	54a Oxford Street	03 328 9243	Sue-Ellen
Pynenburg and Collins Architects	PO Box 80, Lyttelton	Private No.	Simon 021 163 7193
Ray White Real Estate	47 London Street	03 331 6757	Marie Daisy
Roots	8 London Street	03 328 7658	Christy Guilio 021 120 8083
Rossouw Window Cleaning	Private Address	03 389 9259	Mike 0274 355 239
SAMO Coffee	3 Canterbury Street	Private No.	Open 7 Days
Sno Clothes and Milly May	8a London Street	03 328 8584	Heather
Special Branch NZ Arborist	Hawkhurst Road	03 328 8303	Tim 022 091 9202
Storm Hairdressing	34 London Street	03 328 8859	Sally Kat
Tailored Portraits Photography	Cressy Terrace	03 328 7122	Gillian Taylor 021 047 4415
Thea Mickell Services Ltd Fundraising	Private Address	03 384 7547	Thea 027 607 7282
The Mindful Body	Private Address	03 328 9923	Janet 027 368 6515
The Rookery	Ross Terrace	03 328 8038	Angus Rene
Time to Resolve Mediation Service	Private Address	03 328 8219	Chantal 022 618 8532
View Hairdressing	Private Address	Private No.	Megan 027 488 5173
Volcano Radio	Private Address	03 328 8566	
World Organics Skincare	Private Address	03 328 7446	Nicki 027 423 9455

Diamond Harbour

Bronwen Jones- Writing and PR Services	Rawhiti Street	03 329 4303	www.bronwen-jones.com
Chalfont Cafe	2 Waipapa Avenue	03 329 4854	7Days 9-4pm +Wed-Sun 'til late
Diamond Harbour Country Store	2 Waipapa Avenue	03 329 4854	7Days 8.30-5.30 +Wed-Sun 'til 7pm
Diamond Harbour Ferry	Waipapa Avenue	03 328 9078	
Diamond Harbour Medical Centre	2a Waipapa Avenue	03 329 4402	
Godley House Cafe	2e Waipapa Avenue	03 329 4880	www.godleyhouse.co.nz
Orton Bradley Park	Marine Drive	03 329 4730	
Snowdrop Cottage Children's Store	Waipapa Avenue	03 329 4464	Open 7 Days 9.00am - 5.00pm
Shunyata Retreat Day Spa	10 Rawhiti Street	03 329 4773	www.journeyessence.com
Thrive: Chiropractic, Acupuncture, Nutrition	Private Address	03 329 3254	Mark and Lou Warren

Governors Bay

At Home Childcare Limited	18 Bay Heights	03 329 9970	Neave Ross-Wallace
Governors Bay Hotel	52 Main Road	03 329 9433	
She Chocolat	79 Main Road	03 329 9825	
Living Springs	Bamfords Road	03 329 9788	

“bite size”

fresh n fabulous places to dine

October 2013

Restaurant	Address	Location	Phone	Hours
Brunch				
Chalfont Cafe	2 Waipapa Avenue	Diamond Harbour	03 329 4854	9am Open Every Day
Civil and Naval	16 London Street	Lyttelton	03 328 7206	9am Saturday 9am Sunday
Coffee Culture	18 London Street	Lyttelton	03 328 7080	8am Open Every Day
Freemans Restaurant	47 London Street	Lyttelton	03 328 7517	9am Saturday 10am Sunday
Godley House Cafe	2e Waipapa Avenue	Diamond Harbour	03 329 4880	9am Wednesday to Sunday
Governors Bay Hotel	52 Main Road	Governors Bay	03 329 9433	8am Open 7 Days
Port View Restaurant	23 Dublin Street	Lyttelton	03 328 8740	11am Saturday 11am Sunday
SAMO Coffee	3 Canterbury Street	Lyttelton	Private No.	8am Open 7 Days
She Chocolat	79 Main Road	Governors Bay	03 329 9825	10am Weekdays 9am Weekends
Lunch				
Chalfont Cafe	2 Waipapa Avenue	Diamond Harbour	03 329 4854	Open Every Day
Civil and Naval	16 London Street	Lyttelton	03 328 7206	Open Every Day from 11am
Everest Indian Restaurant	2 London Street	Lyttelton	03 328 8185	Open Every Day
Fishermans Wharf	39 Norwich Quay	Lyttelton	03 328 7530	Friday to Sunday
Freemans Restaurant	47 London Street	Lyttelton	03 328 7517	Saturday Sunday
Godley House Cafe	2e Waipapa Avenue	Diamond Harbour	03 329 4880	Wednesday to Sunday
Governors Bay Hotel	52 Main Road	Governors Bay	03 329 9433	Open Every Day
Irish Pub	17a London Street	Lyttelton	03 328 8085	Open Every Day
Lyttelton Bakery	6 Norwich Quay	Lyttelton	03 328 9004	Monday to Saturday
Porthole Bar	40 London Street	Lyttelton	021 328 977	Open Every Day
Port View Restaurant	23 Dublin Street	Lyttelton	03 328 8740	Wednesday to Sunday from 11am
Roots	8 London Street	Lyttelton	03 328 7658	Thursday Friday
SAMO Coffee	3 Canterbury Street	Lyttelton	Private No.	Monday to Sunday from
She Chocolat	79 Main Road	Lyttelton	03 329 9825	Open Every Day
Dinner				
Chalfont Cafe	2 Waipapa Avenue	Diamond Harbour	03 329 4854	Wednesday to Sunday
Civil and Naval	16 London Street	Lyttelton	03 328 7206	Open Every Day
Everest Indian Restaurant	2 London Street	Lyttelton	03 328 8185	Open Every Day
Fishermans Wharf	39 Norwich Quay	Lyttelton	03 328 7530	Friday to Sunday
Freemans Restaurant	47 London Street	Lyttelton	03 328 7517	Open Every Day
Godley House Cafe	2e Waipapa Avenue	Diamond Harbour	03 329 4880	Friday Saturday
Governors Bay Hotel	52 Main Road	Governors Bay	03 329 9433	Open Every Day
Irish Pub	17a London Street	Lyttelton	03 328 8085	Open Every Day
Porthole Bar	40 London Street	Lyttelton	Private No.	Open Every Day
Port View Restaurant	23 Dublin Street	Lyttelton	03 328 8740	Wednesday to Sunday
Roots	8 London Street	Lyttelton	03 328 7658	Tuesday to Saturday
Tommy Chang's	48 London Street	Lyttelton	Private No.	Wednesday to Sunday
Take Away				
Everest Indian Restaurant	2 London Street	Lyttelton	03 328 8185	4pm - 8pm Every Day
Fishermans Wharf	39 Norwich Quay	Lyttelton	03 328 7530	11am - 8pm Tue to Sun
London Street Fish and Chips	34 London Street	Lyttelton	03 328 8819	11am - 8pm Every Day
Lyttelton Bakery	6 Norwich Quay	Lyttelton	03 328 9004	7am - 3pm Mon to Sat
Lyttelton Sea Foods	6 Norwich Quay	Lyttelton	03 328 7628	11am - 8pm Every Day
Port View Restaurant	23 Dublin Street	Lyttelton	03 328 8740	4pm - 8pm Wed to Sun
BYO				
Mondo Vino	42 Norwich Quay	Lyttelton	03 328 7744	10am Open Every Day
Create Your Own				
Chalfont Cafe [General Store]	2 Waipapa Avenue	Diamond Harbour	03 329 4854	9am Open Every Day
Harbour Co-Op	12 London Street	Lyttelton	03 328 8544	9am Open Every Day
Harris & Turner	8 London Street	Lyttelton	03 328 7358	Mon - Sat 10am to 6pm
London Street Dairy	34 London Street	Lyttelton	03 328 7358	8am Open Every Day
Lyttelton Farmers Market	On London Street	Lyttelton	03 328 9243	10am Every Saturday

“accommodation”

places to stay around the harbour

October 2013

Lyttelton

- **Canterbury Street Apartment.** Fully renovated one bedroom apartment ideal for short term or holiday stay accommodation. Completely self contained with separate living space, kitchenette, bedroom and bathroom. Spread over two floors this furnished apartment will feel like a home away from home. Tariff from \$120 per night. Phone Gloria 03 328 7065 or mobile 022 073 0014.
- **Dockside Apartments.** Three private apartments enjoying harbour views and available for casual holiday or short term occupancy. Scenic and close to London Street, an ideal option for friends or family. Options range from studio; one bedroom or two bedroom apartment. Tariff from \$90 - \$120 per night. Phone Grant or Kathy 03 325 5707 or view more details online www.dockside.co.nz.
- **No.1 Apartment.** Warm two bedroom apartment with magnificent harbour views available for holiday or short term accommodation. Undercover parking. Tariff \$120 per night with minimum three night stay. Longer rates available on enquiry. Phone Linda 03 328 9128 or 021 254 4986.
- **Randolph Apartment.** Private two bedroom modern apartment with superb views across Lyttelton available for holiday or short term accommodation. Apartment features private spa, off street parking and all the mod-cons including WIFI. Tariff from \$120.00 per day, with minimum three night stay. Longer term rates available. Phone Heather 03 328 8585 or 03 328 8584.
- **The Rookery.** Built in 1866 The Rookery Bed and Breakfast is one of the oldest surviving local cottages, with wonderful panoramic views of the historic port town of Lyttelton. Three renovated rooms are available; one with ensuite facilities. Tariff from \$115 to \$160 per night. Phone Angus or Rene Macpherson on 03 328 8038 or view more details on line www.therookery.co.nz.

Diamond Harbour

- **Bryneth's Cottage** located on Purau Avenue. Luxury room, queen bed and spa bath. cooked breakfast or brunch. Only available Friday to Monday \$200 per night. Phone 03 329 4728 or 021 315 609
- **Diamond Harbour Lodge** is the place to relax, enjoy and unwind. Harbour sea views, spacious rooms, TV/DVD, CD player, large selection of books, games, free wireless internet, fridge, microwave, under floor heating in bathroom, heated towel rail, linden leaves toiletries, towelling bath robes. Robyn and Pete Hedges 3 329 4005 or visit www.diamondharbourlodge.co.nz
- **Manaaki Eco Farmstay Purau** offers self contained ensuite accommodation. One or two bedrooms with spacious fully equipped kitchen/living in a beautiful rural setting overlooking Purau Bay. Holiday (min 2 nights) or longer term rates available. Contact Wendy ph 329 3202 or view us online www.ecofarmstaypurau.co.nz
- **Orton Bradley Park** offer self contained camper van sites for overnight stays. Services include 15 powered sites; treated drinking water; toilet blocks and dump site, with the golf club and tennis court next door. Fees start from \$15.00 per night for two persons, with additional adults at \$6.00 per night. Contact 03 329 4730.

Governors Bay

- **Camellia Cottage Bed and Breakfast** is a self contained cottage in a lovely garden setting. Room \$110 per night double or \$75 per night for a single. Contact Faye, 30 Zephyr Terrace, Governors Bay 03 329 9119
- **Governors Bay Bed and Breakfast** offers a place to relax and rejuvenate on nine acres to bush side paradise beside the harbour. Furnished room with ensuite bathroom and separate sitting area also available for short term rent for those seeking emergency accommodation. For more details contact Eva on 03 329 9727, or view on line www.gbbedandbreakfast.co.nz.
- **Governors Bay Hotel** restored to it's former glory and offers six guest rooms located on the first floor level. All rooms renovated with 32 inch flat screen televisions, queen size beds, free wifi, heaters and vanities. Four rooms with direct verandah access with views over the Lyttelton harbour. Contact 03 329 9433 or view more details on line: www.governorsbayhotel.co.nz.
- **Governors Bay Studio** is an upmarket studio with ensuite, wifi, sky television, kitchenette. Located by the water and beach. Lovely garden setting. Bed and breakfast \$180 - \$200 per night. Preferable short stays 2-3 nights. Contact Rosie Belton 027 228 7019.
- **Living Springs** offer an array of accommodation options from fully service private rooms, studios, twin rooms, shared bunkrooms to outdoor camping. Also available are some powered caravan sites. All rooms are clean, comfortable and well maintained for your relaxation. Contact Living Springs on 03 329 9788 or view more details on line: www.livingsprings.co.nz.
- **Studio 15** tourism accommodation \$150 per night. 15 Main Road, Governors Bay. Phone 03 329 9586.

“harbour vibe”

what's on around the harbour this week

October 2013

23 Wednesday

Knit and Yarn Group	10.00am	Lyttelton Library, London Street	All Welcome. Bring your next project.
Plunket Play Group	10.00am	Lyttelton Main School	All Welcome. Andrea Solzer 328 9346
Community Garden	10.00am	The Portal, 54a Oxford Street	Shared lunch from 12.00pm
Bunjinkan Classes	7.00pm	Union Church, Winchester Street	Contact Shaun 027 231 6881
Lindon Puffin Live	8.30pm	Port Hole Bar, London Street	Free Event, All Welcome

24 Thursday

Governors Bay Pre-School Music	9.15am	Governors Bay School Library	All Under 5s Welcome with Adult \$3.50
Lyttelton Volunteer Fire Brigade	7.00pm	Lyttelton Fire Station	Weekly Training New Members Welcome
Governors Bay Volunteer Fire Brigade	7.00pm	Governors Bay Fire Station	Weekly Training New Members Welcome
Contra Dance Night	7.30pm	Private Address, Cass Bay	Contact Bill 03 328 8985 \$5
Cat Tunks and BlackSandDiva	8.00pm	Wunderbar, London Street	\$15 Door Sales
Medway Roots	8.30pm	Port Hole Bar, London Street	Free Event, All Welcome

25 Friday

Baby Time	10.30am	Lyttelton Library, London Street	Stories, Rhymes, Activities Under 2yrs old
Live Music Band	7.00pm	Lyttelton Club, Dublin Street	Good Old Rhythm and Dance Favourites
DJ Jones	8.30pm	Port Hole Bar, London Street	Free Event, All Welcome

26 Saturday

Lyttelton Historical Museum Society	10.00am	Lyttelton Main School	All Welcome. Contact 03 328 8972
Lyttelton Farmers Market	10.00am	London Street, Lyttelton	Fresh produce; Live Music; Buskers and More
Lyttelton Garage Sale	10.00am	The Portal, 54a Oxford Street	Second Hand Bargains and More
Lyttelton Arts Space	10.00am	No.6 London Street	Local Artists and Exhibition Space
Plenty to Share	-	Cnr London and Canterbury	Bring, Exchange and Share Food
Ignition LIVE	7.00pm	Irish Pub, London Street	One Year Opening Celebrations
The Eastern LIVE	8.00pm	Naval Point Club	Tickets \$25 www.undertheradar.co.nz

27 Sunday

Lyttel Soccer	10.00am	Rugby Soccer Grounds	End of Godley Quay: Ages 3-9 All Welcome
Combined Church Service	10.00am	Union Church, Winchester Street	All Welcome
Live Jazz Sundays	3.00pm	Freemans, London Street	Carmel Courtney Live Free
Afternoon Jam with Barry	3.30pm	Porthole Bar, London Street	Free Event
St Josephs Worker Catholic Church	5.30pm	21 Exeter Street, Lyttelton	All Welcome
Don't Tell Mama LIVE	7.00pm	Lyttelton Club, Dublin Street	All Welcome Free Event

28 Monday

Plunket Play Group	10.00am	Lyttelton Main School	All Welcome. Andrea Solzer 328 9346
--------------------	---------	-----------------------	-------------------------------------

29 Tuesday

Story Time	10.00am	Lyttelton Library, London Street	Stories, Rhymes, Activities 2-4yr olds
Lyttelton Health Qigong for Seniors	10.15am	Union Church, Winchester Street	Geraldine Parkes 03 328 7284
Community House Shared Lunch	12.00pm	Comm.House, 7 Dublin Street	Make new friends
Lyttelton St John Youth Division	6.00pm	St John Ambulance Station	52 London St, Lyttelton
Artist Showcase and Mic Night	7.30pm	Wunderbar, London Street	Fresh Talent Live Free Event

Lyttelton Harbour Review is proudly sponsored by:



Lynnette Baird | Licensed Real Estate Agent
P: 03 328 7707 M: 021 224 6637
E: lynnette@realhomes.co.nz
W: www.realhomes.co.nz



Professionals

Kennard Real Estate Limited MREINZ
www.kre.co.nz

