

community news from port lyttelton to port cooper

lytteltonreview

joint venture between professionals real estate and the lyttelton harbour information centre

www.lytteltonharbour.info

Weekly Read:

- farewell to historic police station
- waitangi day celebrations at rapaki
- lyttelton museum findings
- play it at the tin palace



LYTTELTON HARBOUR

review creators

Lyttelton Harbour Review is a 100% voluntary community newsletter initiative developed after the February 2011 earthquake by local Professionals Real Estate Agent Lynnette Baird, and Lyttelton Harbour Information Centre Chairperson Wendy Everingham.

The objective of the Lyttelton Harbour Review is to help keep local residents informed with what is going on in the wider Lyttelton Harbour community. Of course the success of the Lyttelton Harbour Review could not be possible without the ongoing support and enthusiasm from the wider community. A big thank you goes out to everyone who sends information; is willing to be interviewed by a couple of amateurs; or lets us know what might be happening in the neighbourhood. The Lyttelton Harbour Review project would not be possible without you all.

If you have an event, topic or cause that you would like to share with the harbour community, then Lynnette or Wendy would love to hear from you:

Lynnette Baird

Office: 03 328 7707
Mobile: 021 224 6637
Email: lynnette@realhomes.co.nz

Wendy Everingham

Office: 03 328 9093
Mobile: 021 047 6144
Email: infocentre@lyttelton.net.nz

Content Deadline:

Thursday Evening

Subscribe to the Review:

Email either Lynnette or Wendy with the words "Subscribe Me" in the subject line and the Lyttelton Harbour Review will be delivered to your inbox.

Hard Copies of the Review Available:

Lyttelton Harbour Information Centre
Lyttelton Library
Lyttelton Top Club
SAMOs Coffee

Back Copies Available to Download:

www.lytteltonharbour.info



Farewell Historic Police Station

Lyttelton Gem to Disappear

In an all too familiar story, cost has won over restoration and Lyttelton's earthquake damaged Police Station, the oldest operational station in the country prior to the earthquakes, is to be decommissioned in January 2014. Many local residents, police, former police, Members of Parliament, Community Board Members and Ngai Tahu representatives gathered to bid farewell to another piece of Lyttelton's history.

Superintendent Gary Knowles spoke about the 132 years of police history in the building. He reminisced about the people who had come and gone over the years, in particular all the Bob's who had worked on site. Bob Loader was present for the occasion.

"Bob Loader was the Constable in 1961-1963 and then returned as a senior constable from 1987-1990" he said.

Knowles spoke about the Lyttelton Port Town as a unique place for policing and in particular how community policing worked well here. He declared "The land will be forever known as Lyttelton Police land and the former historic cell block will remain as a reminder of policing activities on the site"

Central to Gary Knowles' message was the police were here to stay in Lyttelton. He thanked the current team lead by Gary Manch for their dedication and service to the harbour area.

Assistant Commissioner Grant Nicholls and Richard Gardiner were then introduced. Richard Gardiner approached the Police soon after the earthquakes, to see if they would like a miniature replica of the building commissioned. Typical to most non standard requests there was no money for this project. Richard however proceeded and he created a fabulous replica of the building that was presented to Assistant Commissioner Grant Nicholls. The replica along with many historical treasures from the building will be transferred to the Police Museum.

In true Lyttelton spirit the ceremony included something artistic with a poem specially written by Gary McCormack. Gary unable to attend, and was represented by close friend Stephen Estall. Gary poem features on the next page, and he has kindly allowed us to reproduce it for Review readers.

*"cost has won
over restoration,
and the oldest
operational police
station in the
country is to be
deconstructed"*

Article Source: Lyttelton Harbour Information Centre

Cover Image: Liz Briggs, with thanks

Article Image: Assistant Commissioner Grant Nicholls (Left) Superintendent Gary Knowles accepting the "new" police station. Taken by Lyttelton Harbour Information Centre.

Lyttelton Police Station

Last Call

If the room at hand, be a small cell
of stone and bars of iron,
Then let the stars shine through at night
and the offense be none too grand.

A night getting over a woman.
A chance to desert a ship.
Too much whisky in a local pub
or just too little hope.

A bed hard found, a bed at last !
Time to rest and time to pray.
While up above, Station mother -
goes about her working day.

A boiling of water and disinfectant.
The tidy clang of doors.
A hiss of steam and a swingeing mop.
Scrub, scrub, scrub some more!

In Christchurch town, the Magistrate
holds court in an Irish pub:
“Sin,” he says, “comes to a Port,
as rats come down a rope!”

A good many men, hung by a thread,
And some devoid of hope,
waited blindly for the warmth
The sunrise over the Port.

Suddenly, the Circuit Judge,
came round to make a call.
He shook the earth from the inside out,
with an executioner’s smile.

He didn’t much care for evidence.
He didn’t care for much.
He merely smashed his gavel down
and there was nothing left.

The house of the fallen
will now fall
to the quiet epitaph:
*Mankind’s best and mankind’s worst
lie silent in this place.*

The house of the fallen
will now fall.

Silence...
the cruellest epitaph of all.

Poem: Gary McCormack, reprinted with permission [thank you]
Image: Lyttelton Harbour Information Centre





Urumau Reserve to ReOpen

Lyttelton Reserves Management Committee Announcement

Lyttelton Reserves Management Committee is pleased to announce the reopening of Urumau Reserve on the hills overlooking Lyttelton.

The reserve has been closed since the earthquakes because of the risk of rockfall. Following geotech rockfall remediation, most of the track network in Urumau Reserve is now open for public use.

In welcoming the good news, Acting Chairperson of the Lyttelton Reserves Committee Jozefa Wylaars says "Lyttelton people have really missed being able to roam the hills above the town. It is great to be able to connect with our wider landscape so close to our own homes again".

*"lyttelton
people have
missed being
able to roam
the hills above
the town"*

Lyttelton Reserves Management Committee is made up of local people with an interest in managing the regenerating native forest reserves above Lyttelton. It is a subcommittee of the Lyttelton/Mt Herbert Community Board with delegated authority to manage the day to day decisions about the reserves with the assistance of Christchurch City Council staff.

Anyone interested in being part of the Lyttelton Reserves Management Committee or wanting to help with hands-on work in the reserves should check out the website www.lytteltonharbour.info/community-information/lyttelton-reserves or email the committee secretary at lytteltonreserves@hotmail.co.nz.

Some tracks in Lyttelton and in the Port Hills remain closed and people are reminded to take notice of all signage indicating which areas are open or closed. For further information visit our website www.ccc.govt.nz/trackstatus or phone the Customer Call Centre on 941 8999 or Freephone 0800 800 169.

About Urumau Reserve

To the East of Lyttelton overlooking the town and Whakaraupo harbour lies Urumau reserve. This reserve, which covers 26 hectares, is located on the prominent lava flow ridge that encloses Lyttelton on its eastern border. It is less rugged than Whakaraupo, and is a good place for picnics and walking. It is bounded on its northern boundary by a block of land owned by Lyttelton Port Company and on its eastern and southern sides by Sumner Road.

There are several informal tracks and walkways on the reserve. Considerable work has been done in developing a mountain bike track. In addition the Reserves Committee hopes to be able to extend its walking track along the ridge to the north of the reserve to connect up with other tracks on the Port Hills.

Access to the reserve is from its western boundary above Lyttelton town. It is from the northern end of Gilmour Terrace and Foster Terrace as well as from a section of the reserve which reaches down to Reserve Terrace.

Article: Lyttelton Reserves Management Committee, with thanks
Image: Lyttelton Harbour Information Centre

Waitangi Day Celebrations

The people of Te Hapu o Ngati Wheke warmly invite the community to visit Rapaki Marae on Waitangi Day, February 6 2014. Welcoming ceremony to begin at 10.00am with powhiri starting at 10.30am. Information flyer enclosed with this edition of the Lyttelton Review.



Generosity of Lyttelton People

The Spirit of Christmas Shone

The new "Tree of Hope" community Christmas initiative was a huge success. Thank you for embracing this idea. So many people had so much enjoyment. Whether giving donations, wrapping presents or delivering gifts there were smiles all round. The recipients got such a surprise.

This initiative was supported by Lyttelton Community House, Lyttelton Library, Project Lyttelton and the Lyttelton Harbour Information Centre. A special thank you goes out to Teresa Cameron who suggested the idea.



Left: A small selection of the donated presents, by Margaret Jefferies
Middle: Tree of Hope Helpers: Liz Briggs, Flo McGregor, Desire and Teresa Cameron
Right: Elf Helper at the Lyttelton Harbour Information Centre
Article: Lyttelton Harbour Information Centre

Fire, Fire, Fire

Emergency Services to the Rescue

The Lyttelton Volunteer Fire Brigade and emergency services were kept busy over the holiday period. According to rumour, a Christmas bar-be-que became out of control over at Rapaki Bay on Christmas Day. On the Monday before Christmas a large scrub fire broke out on the Lyttelton side of Godley Head, burning about six hectares of tussock.

Another call out on Christmas Day was for St John Ambulance to help a man pinned between a jet ski trailer and a tree in Cass Bay. Then just after the New Year began, two kayakers needed to be winched to safety by the Westpac rescue helicopter off the rocks at the entrance to Lyttelton Harbour.

And just when emergency services thought the holiday fun was over, the Lyttelton Volunteer Fire Brigade were called to extinguish a fire in a storage unit at the end of one of the wharfs on Saturday January 11.

Article and Image: Lyttelton Harbour Information Centre

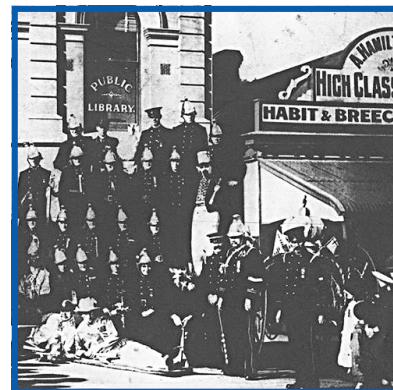


Lyttelton Museum Find

Some spectacles were handed to us late last year. They were found under the floorboards at 20 Oxford Street during repairs to the Lyttelton Information Centre. From the age of the specs we think that they could have belonged to one of the tailors who had shops there in the early 1900s.

The three photos show the spectacles in their case, a 1902 photo with the J. Palmer Tailor shop in the background, and a 1919 photo with the A. Hamilton Tailor shop at the right.

Article and Images: www.facebook.com/lytteltonmuseum



Milky Way Over Banks Peninsula

Caught on Film by Christchurch Photographer

Christchurch photographer, Rob Dickinson, has captured the Milky Way from Banks Peninsula on camera.

Rob shot this photograph [left] from the Port Levy Saddle on Banks Peninsula on Christmas Eve. "In the last few minutes of Christmas Eve the night sky was aglow with a beautiful Milky Way," he says on his web site: <http://500px.com/RobDickinson>

Rob's photograph features "an ancient Totara tree and offshore lightning to the south, along with the small and large magellanic clouds" and "multiple satellite meteor trails".

"It had been cloudy all day but the sky cleared up in the evening, I knew the moon was below the horizon until midnight so headed out to shoot some astro. Port Levy Saddle is a location I've wanted to shoot at night for some time, it's a bit of an exciting drive up there in the dark and I had to fight some gusty winds to shoot this." Dickinson said.

Dickinson is a Christchurch based landscape photographer who specialises in dynamic high impact landscape photography from around the South Island.

In 2011 he became New Zealand Geographic's Landscape Photographer of the Year.

"I've been into astrophotography for a number of years now, and a landscape photographer for about eight years. I've always been a keen photographer but really got into landscapes when I moved to New Zealand from the UK," he said.

"New Zealand is fantastic for astrophotography as it has really dark skies, you just need to get away from the cities. You don't have to go far, Godley Head or Taylors Mistake will do ok. You also need clear skies which have been rather rare of late."

The image was taken on a Canon 6D with a 24f1.4L lens, and is made from a total of 14 individual shots stitched together. Each shot is a 20 second exposure.

For a larger image, see <http://500px.com/photo/55811696>.

Article Source:

www.stuff.co.nz/the-press/news/hills-and-harbour/9561354/Photographer-captures-Milky-Way-over-Banks-Peninsula

Image: Rob Dickinson

Hot Names Star in Sci-Fi

Filming to Begin in Port Levy

A post-apocalyptic film featuring Hollywood stars Chris Pine and Amanda Seyfried is to be shot in Port Levy on Banks Peninsula early next year.

The film, produced by *Spiderman* star Tobey Maguire and Icelandic company Zik Zak Filmworks, is based on the 1974 children's science fiction thriller *Z for Zachariah* by Robert O'Brien.

In the book 16-year-old Ann Burden survives a nuclear holocaust and nerve gas attack because her farm is located in a remote valley with its own weather system. Her belief she is alone is shattered when a scientist arrives in the valley.

The screenplay departs from the book by bringing two men into Anna's orbit, not one. Seyfried (*Mama Mia*) plays Ann while Pine (Captain Kirk in *Star Trek Into Darkness*) plays one of the men and British star Chiwelel Ejiofor the other. Craig Zobel, well-known for indie films *Compliance* and *Great World of Sound*, will direct.

The producers have chosen a stately Port Levy home as the farmhouse and are looking at other locations around the peninsula and the region, but want to keep the project quiet to keep away nosy visitors. They will be filming between January and March.

Production company Z4Z Productions is looking for accommodation in the area for up to 50 film crew. The company was set up by Steven Johnson, a Hollywood-based maker of music videos, commercials and independent films.

Port Levy is no stranger to movies, having featured in Peter Jackson's 1994 film *Heavenly Creatures*. Pine is one of Hollywood's hottest stars after his success as Captain Kirk and Ejiofor is getting glowing reviews for his role in *Twelve Years A Slave*. Seyfried has been shooting Seth MacFarlane's *A Million Ways To Die In The West*.

The Film Commission did not know of the project when approached by The Press, but Film New Zealand said it had worked with the producers and connected them with the local film industry. The film's main local agent, Murray Francis, of Film Business, did not return messages.

A Port Levy identity, who spoke on the condition of anonymity, said the movie production would not faze the locals. "We hardly noticed when Peter Jackson filmed here. We're mainly working farmers, so will just get on with things.

Article Source:

www.stuff.co.nz/the-press/news/hills-and-harbour/9528690/Hot-names-star-in-Port-Levy-sci-fi

Lyttelton Club Restaurant

New Chef, New Menu

The restaurant of the Lyttelton Club, 23 Dublin Street, has a new chef with years of experience, bringing a whole new menu to the Club.

Here you will find pulled pork sandwich; chicken or vegetarian tacos; Lebanese styled filo parcel; or how about Italian meatballs wrapped in bacon and served with a rich and rustic tomato sauce? There are snacks and smaller meals plus a range of desserts too.

Restaurant now open Wednesday to Sunday from 5.00pm and for something new, open for Sunday roast from Midday to 2.00pm. Come and check us out.

A copy of the menu is available on request to lytteltonclub@clear.net.nz or phone the Lyttelton Club on 03 328 8740.



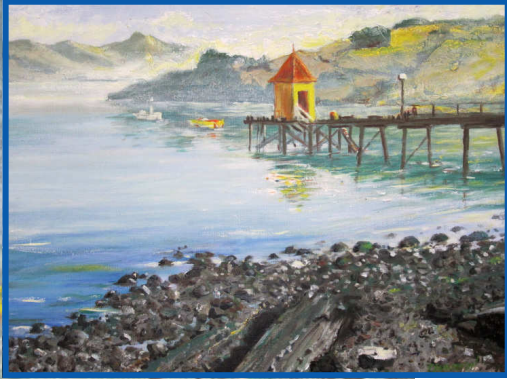
Lyttel Gallery

Lyttelton Harbour Information Centre

Cass Bay resident Colin Jamieson is hosting his second exhibition at the Lyttel Gallery. Entitled Banks Peninsula Landscapes it is a wonderful series of scenes from Akaroa and Lyttelton harbours.

The exhibition runs until the end of January and can be viewed Monday to Saturday from 10am to 4pm and Sunday 11am to 3pm.

Article and Images: Lyttelton Harbour Information Centre



BNZ Farewell Donna

Last of the Team Leaves



For many years the BNZ Lyttelton hosted a series of familiar faces. Donna Shine, Trish Royds and Kelly Nesbit. One by one over the last year they have departed Lyttelton for various reasons.

It's now time to say good bye to Donna. Donna is a very familiar face, who also lives in Lyttelton, is retiring from the Bank after 16 years of service. At least with this retirement Donna will continue to live and work in the local area. Donna talks about her career in the bank. All the years at 28 London Street, then the move to the port-a-com after the earthquakes and then working from the new office at 56 London Street.

"Sixteen months in the Port-a-Cabin really cemented her relationships with the other team members. We'll be friends for life after that experience" she said. Naturally during all those years in Lyttelton it's the relationships with people that she has enjoyed the most.

"I have loved getting to know everyone and the great thing for me as I'm still living here, I won't have to really say goodbye" Donna said. After a well earned holiday, Donna will be teaming up with her husband Mike, where she will be the administrator in his business.

Article and Images: Lyttelton Harbour Information Centre

Steam Tug Lyttelton Harbour Cruises

Every Sunday Departs 2.30pm | \$25 Adults \$10 Children \$50 Family

Throughout the summer season, Tug Lyttelton Preservation Society operates a Sunday afternoon harbour cruise to the Lyttelton Heads. The vessel departs from No.2 Wharf at 2.30p.m. and returns to her berth at 4.00pm. Passengers are able to view the workings of a steam ship that is over 100 years old.

Tickets available on the boat, on the day. For more information 03 328 8954

Learn more about Tug Lyttelton: www.tuglyttelton.co.nz

Live at the Point

Back this Summer!

Set on the grounds of the former 'Godley House', across the harbour from Lyttelton, this nine week event promises to be a wonderful experience, both for visitors and musicians.

Once again there will be a diverse line up on show: from award-winning local song writers to a delightful Kiwi-Icelandic collaboration, sultry blues to soulful jazz, from 'Best Country Song' to foot stomping covers, all acts are bound to keep you wanting more.

So pack a picnic and enjoy a relaxing and entertaining day away from the city hustle. Come down and bring your friends to enjoy the music, the view, the people and the great food from our two fabulous cafes. 1-4pm each Sunday this summer in Diamond Harbour.

More details: www.sprig.org.nz/live-at-the-point-diamond-harbour-2014

Tin Palace

Sonic Snapshot Exhibition "Play It"

"Play it" is a pop-up exhibition at the Tin Place featuring a display of loaned LPs together with the donors' thoughts and memories about the LPs. Visitors are encouraged to choose a record to be played and to leave a note about their thoughts / memories that the record evoked. Or, they may simply say why they chose that particular LP.

Unlike CDs or MP3s, record collections are in essence a personal art gallery of tastes and experiences filled with the good, bad and ugly. LPs are created to be listened to in full. They are mini sonic curations in their own right.

"Is it wrong, wanting to be at home with your record collection? It's not like collecting records is like collecting stamps, or beer mats, or antique thimbles. There's a whole world in here, a nicer, dirtier, more violent, more peaceful, more colourful, sleazier, more dangerous, more loving world than the world I live in; there is history, and geography, and poetry, and countless other things I should have studied at school, including music." — Nick Hornby, High Fidelity

The Tin Palace is hosting a pop up sonic snapshot experience through the medium of vinyl LPs. Open 23 January to 2 February.

Where: The Tin Palace
13a Oxford Street, Lyttelton

Open: Thursday and Friday 11.00am to 3.00pm
Saturday and Sunday 10.00am to 4.00pm

Taste of Summer: Wine Tasting

Saturday 8th February

Where: Roots Restaurant
8 London Street, Lyttelton

When: Saturday 8 February

Time: 5.30pm to 7.00pm

Host: Jo Burzynska

Hello, I am excited to be teaming up with Roots again to present "A Taste of Summer", a relaxed al fresco soirée in Roots' lovely courtyard garden, where I will be pairing a selection of wines suited to the season with canapés crafted by Roots' chefs. The cost of the event is \$50, which includes a selection of fine wines and canapés. Booking is essential through Roots on 03 328 7658 with more information available at: <http://joburzynska.com/a-taste-of-summer/>



LIFT Library Film Evening

Thursday February 6, 7.15pm | The Portal, 54a Oxford Street

Film: CROSSROADS - LABOUR PAINS OF A NEW WORLD VIEW

We are facing CRISES - social unrest, natural disasters, economic failures. But we can create transition, by changing our world view to interdependence, developing a nature of connections. In Chinese language the word "crisis" contains two aspects: danger + opportunity.

There will be some short, local, relevant film clips too, not yet confirmed – too many to choose from!

Koha Appreciated

Timebank members may instead credit LIFT Library for the time spent.

And finally today's quote:

I long to accomplish great and noble tasks, but it is my chief duty to accomplish humble tasks as though they were great and noble. The world is moved along, not only by the mighty shoves of its heroes, but also by the aggregate of the tiny pushes of each honest worker. Helen Keller, on 'Optimism'

LIFT Library > L = Living Economies + I = Inspiration + F = Facts + T = Transition

For more information on the Lyttelton LIFT Library, contact Juliet 03 328 8139 or 021 899 404

Kayak Fun in Lyttelton

Corsair Bay Water Fun

Looking for a fun family day? Head to Lyttelton Harbour this summer and have a day at the beach and on the water kayaking in Corsair Bay.

Adventure Specialties will be hiring out sit-on-top kayaks for just \$5.00 per hour. Perfect for kayaking beginners, these easy to use kayaks mean that if you turn over you will just fall off and climb back on top again. Lifejackets are included in the hire.

As the Lyttelton Pool will not be open this summer, Christchurch City Council have worked with Adventure Specialties to bring you this affordable water activity over the summer season. A perfect opportunity to enjoy the outdoors knowing that the company behind this has over 20 years experience providing adventure and wilderness experiences on New Zealand rocks, rivers, mountains, and coast.

The kayaks will be available every day from 11.00 am to 5.00 pm from 27 December to 2 February 2014 (weather dependant). No booking is required although it is recommended.

For further information, phone Adventure Specialties on 03 379 9130 or the Council on 03 941 8999.

Project Lyttelton Fun Summer Events

Save the Date for Great Entertainment

Project Lyttelton's Events Organiser Lucette Hindin has been working hard over the summer break. Released in mid-January is the programme for a new series of events over the weekend of February 7 and 8.

Lyttelton Tea Party

A Night Out in Lyttelton features a horibuzz and tali live at The Grassy from 8pm. A series of other acts will also feature around town. At Tommy Changs you'll find Flora Knight and String Band from 6pm, Rotten Radio Sound Zone will be just off London Street from 7pm and Civil and Naval will host "In the Night Kitchen" from 10pm. Ticket information to follow shortly.

The Big Pirate Picnic Beach Party

Follows the Lyttelton Tea Party on February 8th from 2-6pm at Corsair Bay. Games, Pirate band plus food and drink. This is a free event. Later that evening "A Taste of Summer" 5.30-7pm will feature at Roots. A collaboration between Roots and wine expert Jo Burzynska. Enjoy a selection of wine suited to the season matched with canapes designed by the Root's culinary team. \$50pp Later that evening our Lyttelton Poets meet for an evening at Tommy Changs from 8pm. \$10pp

Wine and Spirit Education Classes

This year I hope to run Levels 1 to 3 of these internationally respected qualifications. These are suitable for both those involved in the trade and consumers, providing a great and increasingly in depth overview of the world's wines. Further information can be found on my website: <http://joburzynska.com/south-island-wset-classes-in-2014/>

Water Safety

Five Simple Rules

Every year people die needlessly on the water. While we have strict regulations around vehicle use we don't apply the same rigour to boating safety. Everyone who plans to go out in a boat this summer should follow some simple rules to help you come home safely. You will enjoy yourself much more knowing that if you get into difficulty you have done everything you can to ensure a safe outcome.

The first of the five simple rules is to always have lifejackets on board for every person and wear them! Make sure the jackets fit properly and are well maintained. Don't put young children into adult jackets. Boats can sink very quickly and if you have a life-jacket on you can increase your survival time in the water. If you are boating in Canterbury waters and your vessel is under six metres in length and is underway, it is a requirement of the navigation safety bylaws that you are all wearing jackets.

Skipper responsibility is the second key rule. Make sure that one person on board is skipper. All other passengers must follow their instructions. The skipper is responsible for the safety of everyone on board and for the safe operation of the boat. It's important they know the rules and regulations, where all safety equipment is stowed and the limits of the vessel. Don't push yourself or your boat too hard.

Always take at least two separate waterproof ways of communicating with you. You need to have these close by at all times and they must be easily accessible. Everyone on board should know where these are and how and who to call for assistance in an emergency.

In New Zealand we have great access to up to date marine weather forecasts. We need that because the weather can change so quickly. Before you leave home check the forecast and change your plans if it's not looking good. Throughout the day you should also keep a close eye on the weather and an on going check on forecasts. The weather and sea conditions will change during the day so make sure you know what is happening and what is expected.

Finally, don't mix alcohol and boating – it doesn't work. Safe boating and alcohol just don't go together. Weather and water conditions can quickly change or you could face equipment failure and you need to be able to think and respond quickly and clearly.

If you follow these five simple rules it will help ensure you have a safe and enjoyable time on the water. For more information: Environment Canterbury Media - media@ecan.govt.nz - 027 221 5259

EQC Group Action - Is This for You?

Posted on behalf of the EQC Group Action Group

The Anthony Harper group action to get a declaratory judgement on EQC standards now has pledges of \$142,000 behind it but \$240,000 is needed to get the case off the ground. It is vital that we back this, the opportunity will not come again. If you are under cap and have EQC issues this is a chance to help yourself and to help others. The aim is to keep the cost under \$2000 per household so 120 households are required. Through additional fundraising it is hoped that the cost per household can be reduced further. The proposed proceeding involves seeking a declaratory judgment from the Court which would confirm the standard of repair that EQC is required to meet. This impacts both on repairs undertaken by Fletcher EQR on behalf of EQC as well as the amount payable by EQC in the event it elects to settle claims in cash.

What are EQC's obligations under the Earthquake Commission Act? The standard of repair provided for in the Act requires EQC to replace or reinstate the building to a condition substantially the same as when it was new, modified as necessary to comply with any applicable laws. The costs in doing so must be reasonably incurred. The Act also contemplates circumstances that do not permit exact or complete reinstatement. This might arise, for example, where building materials or methods have evolved, or where products are no longer available, or no longer comply with current building standards. In such circumstances the Act states that EQC is only bound to replace or reinstate as circumstances permit and in a reasonably sufficient manner.

What is EQC's approach? EQC appear to be relying on the "reasonably sufficient" standard in all cases, not just in those where circumstances do not permit exact or complete reinstatement. The aim is to establish whether EQC's approach is wrong and get a full entitlement for those that have joined the group. If any of the following apply to you, email eqcgroupaction@gmail.com to get a confidential call from a group volunteer to get more information or contact Anthony Harper on 379 0920 or groupaction@ah.co.nz to register interest and get a FAQ sheet.

- ✦ The EQC scope has missed significant earthquake damage
- ✦ Earthquake damage has been labeled historic
- ✦ You are being made to pay for something in order to get a repair (eg re wiring)
- ✦ You are being refused a repair and required to take a cash settlement do to some sort of noncompliance issue
- ✦ You are being offered a foundation repair that involves jack and pack or glue
- ✦ You are being offered a foundation repair without a geotech or engineering assessment to ensure its suitability
- ✦ You are getting structural repairs but are not being offered a consent.
- ✦ You have had any of the above done and want it done right and want code compliance for your house.

Edible Garden Awards

Edible Gardens to be acknowledged in the Lyttelton/Mt Herbert area with the inaugural Edible Gardens Award in 2014. Growing your own food brings joy and sustenance to many. Having a ready source of food 365 days of the year from either your back yard, community or school garden has captured the imagination of many and is enjoying a renaissance in cities and local neighbourhoods throughout the world.

This Lyttelton/Mt Herbert Community Board initiative acknowledges not only the direct health and economic benefits of growing and harvesting food but also the community connectedness and resilience that comes from toiling together for a common goal. The Lyttelton/Mt Herbert Edible Gardens Award for 2014 is an awards programme in partnership with the Canterbury Horticultural Society aimed at acknowledging and supporting individuals, schools and communities who are actively involved in the growing of their own food. The awards seek to encourage others to consider establishing a garden, either by themselves or with others.

Gardens will be assessed on the use of sustainable practices, creativity, planning and plant knowledge. You can nominate yourself or others. Nominations close 5pm Friday 21 February 2014 and assessments will be made in the week of 17-21 March 2014. The nomination form can be downloaded at www.ccc.govt.nz/ediblegardensLMH and hard copies of the nomination form can be found in various locations around the Harbour Basin.

Lyttelton Temporary EQC Accommodation Solutions

OPTION ONE: Randolph Apartment. Private two bedroom, fully furnished, modern apartment with superb views across Lyttelton is available for holidays or short terms stay while your home is being earthquake repaired. Able to provide insurance quotes for EQC accommodation requirements. Apartment features private spa pool, off street parking and all the mod-cons including Wifi. Tariff from \$135 per night, with minimum three night stay. Phone Heather 03 328 8584 or 03 328 8585 or email heather@millymay.co.nz

OPTION TWO: Accommodation/house fully furnished available end of February 2014. Short term but would consider long term. Would suit EQC orphans. I have a lovely home looking out over Corsair Bay (just pop across the road). Bus stop at the bottom of section. Offering four double bedroom, two living areas, two toilets and double garage with off street parking for up to three cars. Surrounded with colourful relaxing gardens. Sorry no fences, but pets I will consider, as the last two families have not had any problems. I prefer fully furnished. \$900/wk (power not included). Phone connection and broadband incl. Call Heather on 027 211 7205 for details.

OPTION THREE: We have rental accommodation available in the Lyttelton area for Earthquake Repairs. Short or Long term, fully furnished, pets negotiable. Please phone Betsy on: 03 377 4939 or 021 994 297.

OPTION FOUR: If you are having trouble finding accommodation in Lyttelton while earthquake repairs are being done, this might be an option for you on Sullivan Avenue, Opawa. Just 8 minutes to Lyttelton. Beautiful Villa, available for short or long term fully furnished accommodation. Lovely maintained gardens. Fully fenced. Great family home three bedroom, one bathroom, off street parking for two cars, power, phone, television, broadband, and gardener provided. Available from 16 December 2013. Sleeps up to five people. Pets negotiable. Smoker's ok. Please phone Sue 027 456 7011.

Lyttelton House to Rent

Three large bedrooms. Amazing views. Large section on sunny eastside hill with large flat area at the top. Two heat pumps, insulation and double glazing. Neutral decor. Long Term \$480. Can negotiate a price for a short term rental for EQC/Insurance repairs. Phone Michelle 328 8020 or 027 416 0625.

Teddington House to Rent

3 bedroom house for rent in Teddington on a sunny farm with room for animals. Rimu floors. Cozy with good wood stove and double glazing. Outside parking. Generous veranda. Water view. Available late Jan/ February. Rent \$360pw. Phone 329 9118.

Le Bons Bay Holiday Home

Secluded holiday home 800 metres from beach, sleeps eight. Available 18 January onwards. Phone Jo 03 304 8524.

Wanting to Rent

Hello, I am a 35 year old guy, working full time, quiet, clean, reliable, friendly looking for a place to stay in the Lyttelton area. From time to time my seven year old will be with me. More than happy to live through EQC repairs. Please call me 027 371 7966.

TIN PALACE



A sonic snapshot exhibition through the medium of vinyl Lps donated by the residents of Christchurch.

Thursday 23 January - Sunday 2 February

Thurs / Fri 11-3

Sat / Sun 10-4

13a Oxford St, Lyttelton

f: Tin Palace Lyttelton

Waitangi Day 2014

The people of Te Hapū o Ngāti Wheke warmly invite you to visit

Rāpaki Marae



- 10.00am** Prepare visitors for an outside welcome ceremony
(Koha/donation for Rāpaki marae collected at the gate)
- 10.30am** Participate in a Pōwhiri – Welcome Ceremony
(dress for the weather) followed by light refreshments.
- 11.30pm** Citizenship Ceremony - Mayor Lianne Dalziel will confer
citizenship on new citizens at Rāpaki Marae
Items by members of Te Ahikaaroa Kapahaka group
- 12.30pm** Hangi meal (fundraiser)
Whanau/Family activities - Swimming, Waka Ama
Talks inside Wheke ancestral house

Haere mai! Come Along!
We look forward to hosting you.

Works notice update: Brittan Terrace and Park Terrace, Lyttelton, retaining wall rebuilds.

What: Repair of the retaining walls in front of 16 - 18 and 24 - 30 Brittan Terrace and 32A Park Terrace and 67 Cressy Terrace. The new retaining walls will be strengthened using soil anchors.

Where: Between 16 and 30 Brittan Terrace, Lyttelton.
In front of 32A Park Terrace and 67 Cressy Terrace, Lyttelton.

When: Brittan Terrace - Tuesday 14 January to April 2014.
Park Terrace - Tuesday 14 January to March 2014.

Traffic impact:

Brittan Terrace

- We have changed drilling method on Brittan Terrace and are now using an air drilling method. The drilling machine is shorter. This will allow one-lane of Brittan Terrace to be open while the drilling machine is in action. Traffic lights will be in place to control traffic.
- As the drilling rig mast extends above the traffic lane whilst it is drilling heavy/large vehicles will need to wait until the anchor is drilled, which can take up to 20 minutes.

Park Terrace - will be reduced to one lane. Traffic lights will be in place to control traffic. There will be no left turn from Cressy Terrace onto Park Terrace.

Where we are working: Brittan Terrace retaining wall



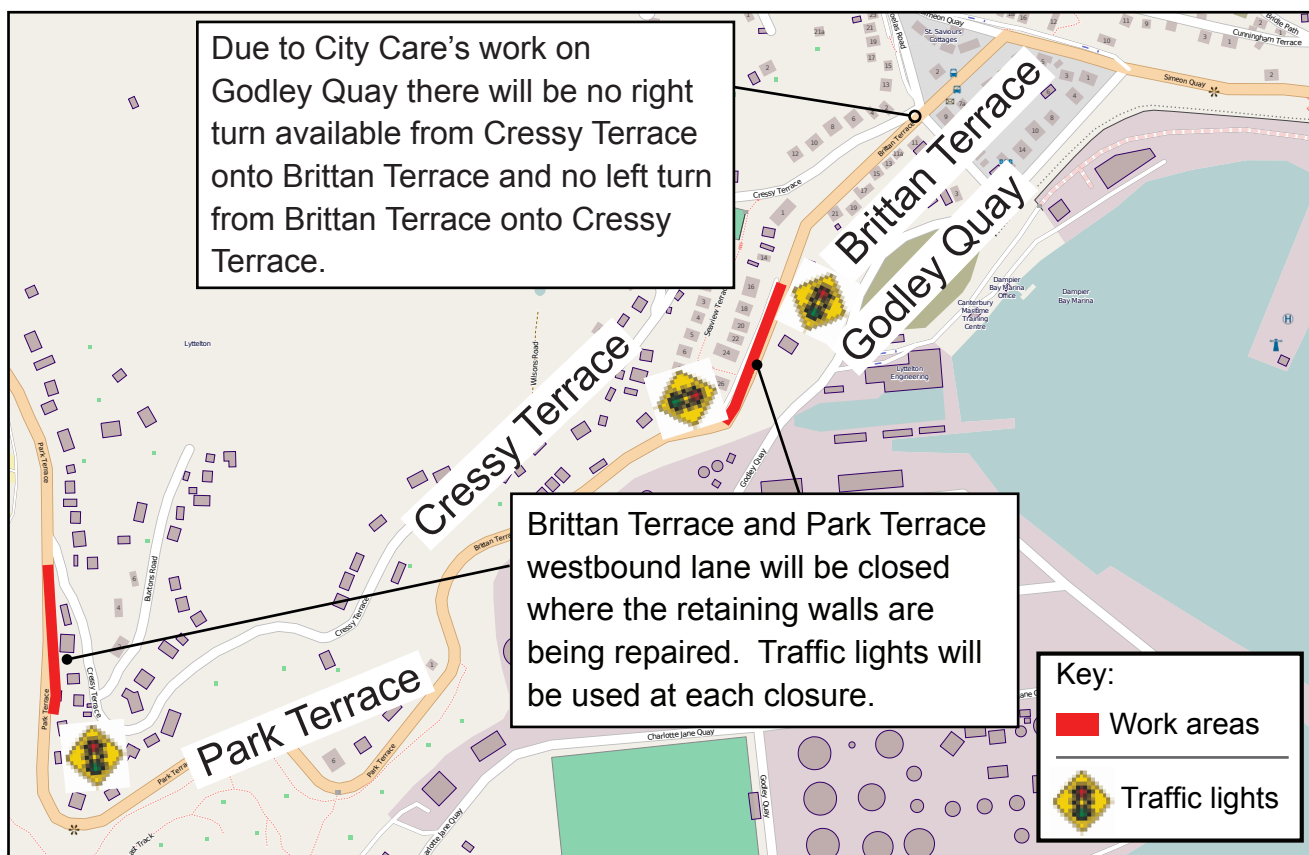
Sourced from LINZ data, Crown Copyright reserved

Where we are working: Park Terrace retaining wall



Sourced from LINZ data, Crown Copyright reserved

Traffic Management:



Map data © OpenStreetMap contributors

Traffic Management:

- In front of 16 to 30 Brittan Terrace and 32A Park Terrace to 67 Cressy Terrace one traffic lane will be closed. There will be a set of traffic lights at each closure.
- No left turn will be available from Cressy Terrace onto Park Terrace. Cressy Terrace will be 30km/h. There will be no-parking cones available for narrow sections of the road or near corners.
- There will be no parking opposite the work sites on Brittan Terrace and Park Terrace.
- There will be no right turn from Cressy Terrace onto Brittan Terrace. Also there will be no left turn from Brittan Terrace onto Cressy Terrace. This is due to City Care works on Godley Quay which is scheduled to finish late February 2014.

Feedback received during the anchor trial on Brittan Terrace:

- **Blind corners on Cressy Terrace:** Cressy Terrace will have a 30km/h speed limit in place, we will also make no-parking cones available if you have any concerns about particular areas of the road.
- **Overgrown vegetation:** We've put a request for service through to the Council to have this trimmed.
- **The give way signs on Brittan Terrace:** Due to City Care's work on Godley Quay trucks coming from the port need to take Voelas Road and turn right onto Brittan Terrace. The large trucks really struggle to stop/start on Voelas Road as it is quite steep, so the give way signs were installed on Brittan Terrace so the trucks, or any traffic coming up the road, have right of way. If you have any questions about City Care's work please call them on 0800 632 889 or please come to the street meeting in January.

Want to know more?

Our crew will be on Brittan Terrace near the work site on Monday 20 January 2014 from 6.00pm to 7.00pm. Come and meet the crew who can help explain the work and traffic management in detail if you have further questions about this work. City Care will also have representatives there if you have any questions regarding works on Godley Quay.

What: Street meeting/meet the crew

When: 6.00pm to 7.00pm Monday 20 January 2014

Where: On the footpath around 16 - 20 Brittan Terrace



Cherie Leckner Project Manager

General Information:

There will be increased noise, dust and vibration levels associated with this work. Nearby residents may experience ground-borne noise and vibrations during the installation of the anchors.

Residential access will be maintained during this work but access may be limited for short periods during working hours when the anchors are being installed.

Please contact Fulton Hogan on 0800 277 3434 if you have any specific access requirements that we need to consider e.g. nurse/doctor visits, Meals on Wheels, or planned works on your property.

Work hours are Monday to Friday between the hours of 7.00am to 5.00pm and Saturday 8.00am to 4.00pm.

Works will have no planned impact on current power, telecommunication, water or gas services. However, the network is still fragile so please be prepared in case there is an unexpected service cut off.

Safety is our number one priority. Safety is your responsibility too. Stay clear and stay alert - keep children and pets at a safe distance from the work site.

All works are subject to favourable weather and on-site construction conditions.

Need more information?

Phone: 0800 277 34 34 (8.30am- 5.00pm Monday - Friday)

Email: rebuildinfo@fultonhogan.com

Website: Visit www.strongerchristchurch.govt.nz

Follow us on Twitter: twitter.com/scirt_info

If you are not the owner of this property please pass this leaflet onto your landlord or property manager.

Email: info@scirt.co.nz
www.strongerchristchurch.govt.nz



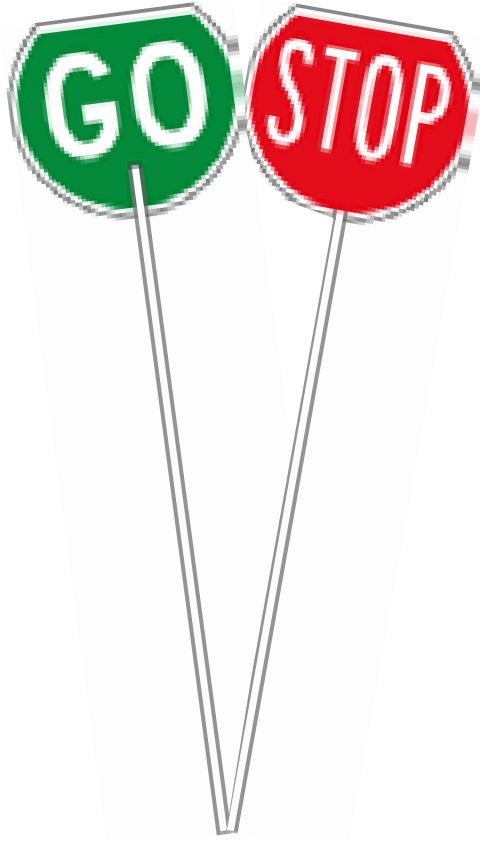
Visit our website and sign up to receive our newsletter for the latest information.
Follow us on Twitter @SCIRT_Inf



Programme funded by

New Zealand Government

The best lollipops in town



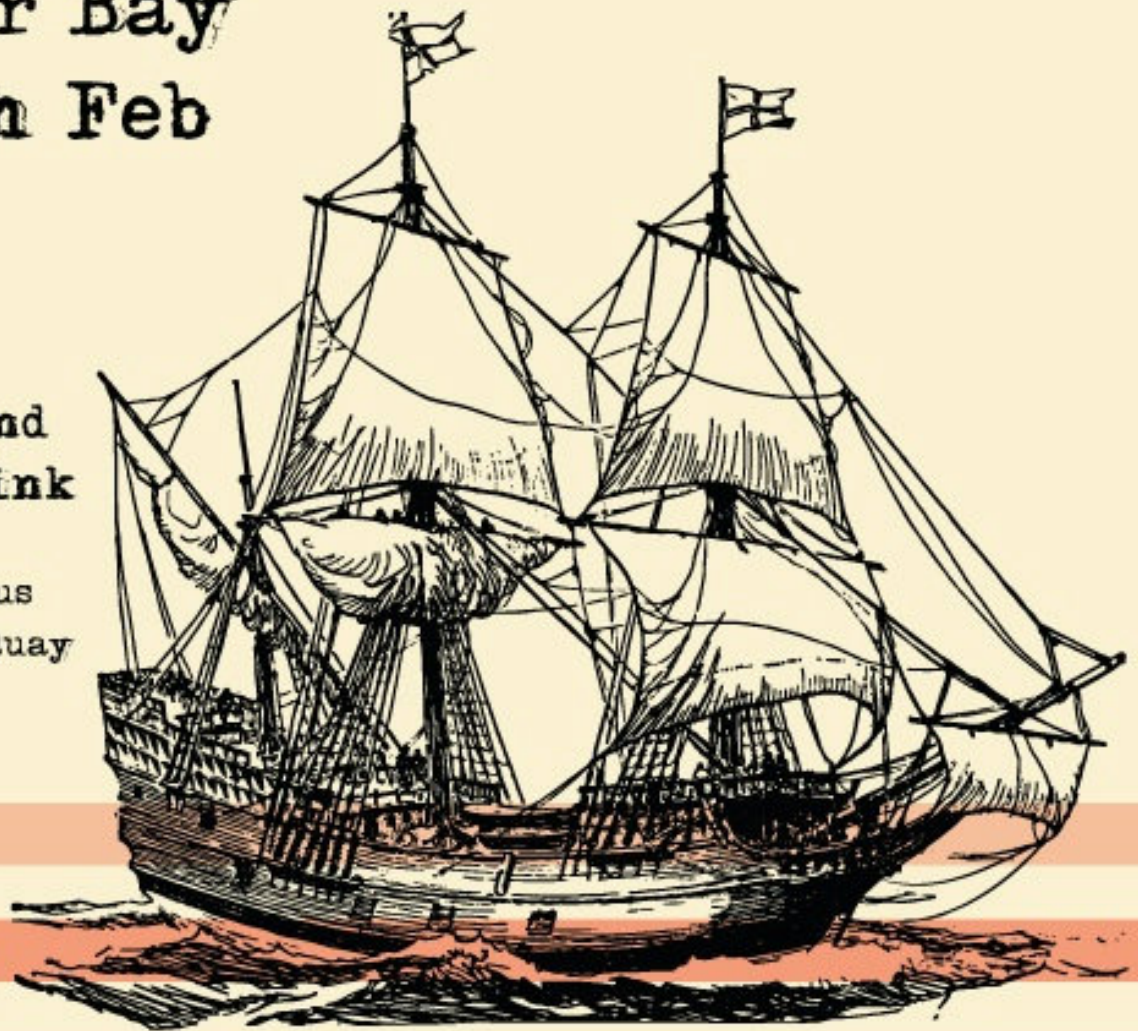
Roadworks
=
Progress

THE BIG PIRATE PICNIC BEACH PARTY

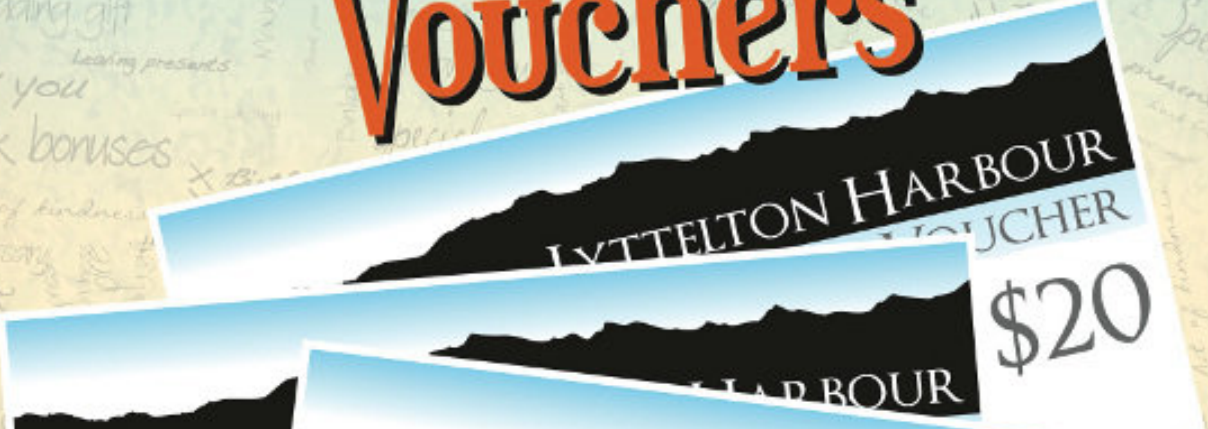
Corsair Bay
Sat 8th Feb
2-6pm

- Games
- Pirate Band
- Food & Drink

Free shuttle bus
from Norwich Quay



Lyttelton Harbour Gift Vouchers



LYTTELTON HARBOUR
GIFT VOUCHER
\$20

To.....
From.....
Expiry Date.....

To.....
From.....
Expiry Date.....
Signature.....



Supporting Local Businesses
Sold at the Lyttelton Harbour Information Centre, 20 Oxford St Lyttelton

“harbour vibe”

for events and performances

January 2014

21 Tuesday

Artist Showcase Open Mic Night 7.30pm Wunderbar, London Street Free Event | Featuring Babilon Chile
Tami Neilson & Nelson Family Reunion Naval Point Club

22 Wednesday

Adam McGrath and Jess Shanks 8.00pm Wunderbar, London Street Eastern Duo, Live and Free Event
Hannah Harding 8.30pm Porthole Bar, London Street Live and Free

23 Thursday

Medway Roots 8.30pm Porthole Bar, London Street Free Event
David Francisco 9.00pm Civil & Naval, London Street

24 Friday

DJ Bones 7.30pm Porthole Bar, London Street Free Event
So Long Sweetheart 8.30pm Wunderbar, London Street

25 Saturday

Amira Grenell and Amy Grace Tommy Changs, London Street
Dr Scanchez 8.30pm Porthole Bar, London Street Free Event
Supermodel—Rimu & Roses Tour 9.30pm Wunderbar, London Street www.thesupermodelband.co.nz

26 Sunday

Delaney Davidson & Friends 1.00pm Godley Point, Diamond Harbour www.sprig.org.nz
Afternoon Jazz with Carmel and Friends 3.00pm Freemans, London Street Free Event
Sunday Afternoon Jam Session 3.30pm Porthole Bar, London Street Free Event

Tin Palace “Play It”

A pop-up exhibition at the Tin Place featuring a display of loaned LPs together with the donors' thoughts and memories about the LPs. Visitors are encouraged to choose a record to be played and to leave a note about their thoughts / memories that the record evoked. Or, they may simply say why they chose that particular LP. Open Thursday 19 and Friday 20 11am to 3pm. Open Saturday 21 and Sunday 22 10am to 4pm. Admission free. Tin Palace, 13A Oxford Street, Lyttelton.

Lyttel Gallery “Colin Jamieson Landscapes”

Cass Bay resident Colin Jamieson is hosting his second exhibition at the Lyttel Gallery. Entitled Banks Peninsula Landscapes it is a wonderful series of scenes from Akaroa and Lyttelton harbours. The exhibition runs until the end of January and can be viewed Monday to Saturday from 10am to 4pm and Sunday 11am to 3pm at the Lyttelton Harbour Information Centre, 20 Oxford Street, Lyttelton.

Lyttelton Harbour Review is proudly sponsored by:



Lynnette Baird | Licensed Real Estate Agent
P: 03 328 7707 M: 021 224 6637
E: lynnette@realhomes.co.nz
W: www.realhomes.co.nz



Professionals

Kennard Real Estate Limited MREINZ
www.kre.co.nz

