

community news from port lyttelton to port cooper

lytteltonreview

joint effort between lynnette baird and the lyttelton harbour information centre

www.lytteltonharbour.info

Weekly Read:

- Urban Downhill Thrills
- Port Lyttelton Plan Feedback
- Meet Lyttelton's New Sergeant
- Modular Housing Concept
- Tree of Hope for Christmas
- Live at the Point Returns



LYTTELTON HARBOUR

review creators

Lyttelton Harbour Review is a 100% voluntary community newsletter initiative developed after the February 2011 earthquake by local Real Estate Agent Lynnette Baird, and Lyttelton Harbour Information Centre Chairperson Wendy Everingham.

The objective of the Lyttelton Harbour Review is to help keep local residents informed with what is going on in the wider Lyttelton Harbour community. Of course the success of the Lyttelton Harbour Review could not be possible without the ongoing support and enthusiasm from the wider community. A big thank you goes out to everyone who sends information; is willing to be interviewed by a couple of amateurs; or lets us know what might be happening in the neighbourhood. The Lyttelton Harbour Review project would not be possible without you all.

If you have an event, topic or cause that you would like to share with the harbour community, then Lynnette or Wendy would love to hear from you:

Lynnette Baird

Office: 03 328 7707
Mobile: 021 224 6637
Email: lynnette@realhomes.co.nz

Wendy Everingham

Office: 03 328 9093
Mobile: 021 047 6144
Email: infocentre@lyttelton.net.nz

Content Deadline:

Thursday Evening

Subscribe to the Review:

Email either Lynnette or Wendy with the words "Subscribe Me" in the subject line and the Lyttelton Harbour Review will be delivered to your inbox.

Hard Copies of the Review Available:

Lyttelton Harbour Information Centre
Lyttelton Library
Lyttelton Top Club
SAMOs Coffee

Back Copies Available to Download:

www.lytteltonharbour.info



Lyttelton Urban Downhill

Speed, Jumps and Ramps Thrill

The third and potentially the final Lyttelton Urban Down Hill took place on Sunday November 23.

Following a similar path to previous year's, the course starts in the Port Hills above Somes Road and treks 1.6km over a 160m vertical drop down to London Street.

With the help of building crews and volunteers donating precious time, riders and spectators were treated to an inspiring course of jumps and ramps, down stairs, over retaining walls, shipping containers and local pubs – even through the Haunted House!

Thousands of spectators lined the streets along the Lyttelton course, as some of the country's top mountain bikers dropped in on the streetscape.

Now attracting some notable riders, six out of New Zealand's Top 10 ranked downhill riders were confirmed starters in the Pro Elite Event. With more than 70 riders from New and Australia registered to race, the competition was strong.

From the Pro Elite riders top kiwi rider Cam Cole took out the event for a second consecutive year with a time of 1 minute 36 seconds, while popular rider Wyn Masters claimed the silver medal for the third time in a row with 1 minute 38 seconds and just half a second later third place went to Rupert Chapman.

Event organisers wish to thank everyone who supported the 2014 Lyttelton Urban Downhill and King of Dirt. It was an amazing weekend, that would not be possible with generous sponsors and the great hospitality from the Lyttelton Community.

The Lyttelton Urban Downhill Event is a non-profit event run by a local mountain bike trust, Huxster Mountain Bike Trust: www.huxster.org.nz. Sponsorship and volunteer generosity is essential to keeping this event running, and at the time of writing this article it seems that 2014 may be the last year for the Lyttelton Urban Downhill. If you are keen to sponsor this event for 2015 please contact event organiser Andrea 021 074 1752.

Article: Lyttelton Harbour Information Centre

Images: Above, Lyttelton Urban Downhill | Lower, Penny Mercer—with thanks to both





Port Lyttelton Plan

Feedback Shared with Community

The Senior Team from Lyttelton Port of Christchurch were at the Company's information centre "Port Talk" in London Street last Saturday to share and discuss with the community the feedback received about the 30 year vision for the Port's development.

Lyttelton Port of Christchurch has released a summary of the feedback received about the Port Lyttelton Plan. The Port Lyttelton Plan outlines how the Port can be rebuilt and enhanced to efficiently and sustainably cater for Canterbury's freight demands, now and in the future.

“LPC is committed to ensuring the community is kept fully informed as the Plan progresses.”

The feedback summary has been put together in a booklet called 'Your Voice'. It has been published on the Port Lyttelton Plan website and can be picked up from Port Talk. Follow this link: www.portlytteltonplan.co.nz

“We have engaged with the community and other stakeholders to find out their views and obtain feedback as early as possible in the planning process,” said Lyttelton Port of Christchurch Chief Executive Peter Davie.

“In parallel, Lyttelton Port of Christchurch has also developed a package of information on the redevelopment plans, their effects and any changes needed to regulatory documents and presented this, along with a summary of the stakeholder engagement process, to Environment Canterbury in mid-November.

“Lyttelton Port of Christchurch is committed to ensuring the community and stakeholders are kept fully informed as the Plan progresses.”

Article: Lyttelton Port Company Press Release, with thanks

Images: Lyttelton Port of Christchurch Chief Executive Peter Davie taking to Lyttelton locals about the Port Lyttelton Plan, and the feedback received from the community; supplied by the Lyttelton Port Company, with thanks



LYTTELTON HARBOUR
Fundraising Calendar for Lyttelton Community House | 2015

Lyttelton 2015 Calendar

Fundraising for Lyttelton Community House

Situated at 7 Dublin Street, Community House is a warm and friendly environment where people are welcome to drop in for a visit, enjoy a Community Lunch on a Tuesday, hold groups meetings, or get some support from experienced workers. Under the guidance of Christine Wilson, and support from many volunteers, the Lyttelton Community House provides hot meals delivered to the door for many elderly Lyttelton elderly residents.

Featuring 13 stunning harbour images from various talented local photographers, this is the second calendar designed and funded by two Lyttelton residents, Sally Harvey and Lynnette Baird. Working from a

home base, Sally lives in Brenchley Road and is passionate about both Lyttelton and contributing to the volunteerism culture of the Harbour region. During the day Lynnette is a local real estate agent, but at night works away on a myriad of volunteer projects from her home in Winchester Street, including design and editing of the Lyttelton Review publication.

Calendar available now from Leslie's Bookshop, Lyttelton Harbour Information Centre, Coastal Living, Lyttelton Library, and the Lyttelton Farmers Market Information Stand - just \$15.00 each !



By George!

Lyttelton's New Senior Sergeant

"I'm from a long line of George's... that name has come down the family line but it's stopping with me". Meet George Dave Knowles, otherwise known as Sergeant Dave Knowles.

It's a pleasure chatting to our new Sergeant, and we have to ask, is this Gary Manch the second? Turns out Dave and Gary are old mates. Gary gave Dave the heads up when his position became vacant, and after a thorough recruitment process Dave was the successful candidate for the role at Lyttelton Police Station.

Dave came to policing initially through the Ministry of Transport. For those unfamiliar, prior to 1992 traffic control was not a function of policing. The work was part of the Ministry of Transport. In 1992 the traffic control function was absorbed into the police force and this is how Dave came to work in the blue uniform. Over the years he has had roles in central Christchurch and Papanui, ranging from general policing to being part of a burglary squad.

Dave was appointed the Sergeant at Lyttelton just a couple of weeks ago, so the Lyttelton patch is quite new to him. To date each day has been really different. He is amazed at how relaxed and friendly we all are, and how most people are happy to chat as he wanders down London Street. Luckily for us he does like to engage and talk. He's just as happy in this role as his predecessor Gary Manch.

On discussing the Lyttelton Urban Downhill Sergeant Knowles says "It was fantastic wandering around the downhill course and seeing everyone so friendly and relaxed. You can really feel the community spirit over here. I'm also blown away by the generosity of people."

Andrea Murray organiser of the Urban Downhill told him how the Pump bike track on the corner of Oxford and London Street was all constructed and developed for free for the event and the people of Lyttelton.

Wandering around Dave was keeping an eye on things. Would there be rowdy after parties after the event? He popped into a few businesses to see what would be up. He was greeted by a small ensemble at Civil and Naval. With windows open and music flowing the atmosphere was perfect. No worries there. "The atmosphere was just awesome".

Dave is aware that Lyttelton will host all sorts of events and has heard that the community spirit shines through in all of them. He's already been approached by Project Lyttelton event organiser Lucette Hindin in order to assist in a safe community event and try to sort traffic for next year's Festival of Lights. With his background he is already seeking solutions to that.

He also hopes to organise a Police motor cycle presence so at least that way they can reach people in the narrow streets if required.

To date his role has been getting to know Lyttelton and its residents. As he wanders around the township he confesses that he has to pinch himself and thinks how lucky he is to work here. He's amazed at the beauty of the place and what such a neat community he finds himself in. We get the impression this is his dream job.

His beat is more than Lyttelton. Covering the Bays and Sumner to Ferrymead Dave is keen to get to know the entire community. This is your invitation to get in touch with him and introduce your group or just yourself.

You can contact him at the Lyttelton Station 378 0201 or email george.knowles@police.govt.nz

Article: Lyttelton Harbour Information Centre

Image: Lyttelton Harbour Information Centre
Police Station via Google Maps



Lyttelton Modular Housing

Designed and Manufactured Locally

Dan Tremewan came to Lyttelton about four years ago. He's a property investor and developer with an interest in sustainable building.

Focusing on the rebuild of Christchurch and the need for affordable and environmentally friendly housing he teamed up with local Lyttelton architect Simon Blencoe and a few others to develop a new form of modular environmentally friendly housing called Welhaus. The concept has just been launched and we wanted to find out about Dan and explore how his idea came about.

What brought you to Lyttelton?

We wanted to base ourselves in a place with character that emulated some of the things we liked about living in Wellington: the ability to wander down the hill to a community hub and enjoy the social and architectural closeness that comes from natural geographic constraints and proximity to a working port. Lyttelton delivers on those fronts, and is also a really warm, intellectual and lively community.

Have you lived in a house like this in Europe?

I have spent some years researching panelised and passive housing traditions and practices in Germany, and use of cross laminated timber in Austria, and had an epiphany, a moment when I realised it was that particular combination of elements and concepts we need to foster in New Zealand if we are to work toward making our housing more affordable, efficient and durable.

Do you already have a house built with your new system in Lyttelton?

Our Alpine Abode will be the first Welhaus delivered in Lyttelton, due to be built early next year.

How did you come to team up with local architect Simon Blencoe?

When we owned the lovely Capiche House, in Dixon Street in Wellington, PC Architects were tenants whom I always remembered with respect - they had a space on our top floor filled with light and wonderful textures which they fitted out themselves. Their tenancy inspired my own character-led development of the rest of the building, for our anchor tenant (Sharp NZ) and other tenants, including a Crown Agency, who loved the use of wood floors and brick feature walls. I was surprised to see PC architects had a link to Lyttelton, and were represented here by Simon, so we caught up for a coffee and the rest is history.

What is the build time for this type of house?

We anticipate the Alpine Abode (pictured above) will take approximately three days for assembly and three weeks to finish, following the laying of foundations.

Is a house like this typically 100sq?

Not necessarily. With sustainability in mind, our Welhaus designs are typically compact, but we are in the process of matching our building system to a range of designs to bring the same efficiency, durability and affordability to other more diverse projects. The great thing about the panelised housing system is that clients can choose how to configure their homes, adding and subtracting spaces, and Welhaus designs are easily adaptable.

What are some of the environmental features?

Welhaus homes have many of the things you would expect to see in a more environmentally designed home. Woollen insulation, double glazed doors and windows, LED lighting, water saving fittings are installed, locally sourced materials etc.

Dan is really excited about this project and anticipates sales both locally and internationally. To date the walls are made in Christchurch and the floors and ceilings in Nelson. Everything is flat packed and can be shipped to any location.

For more information about these modular houses, visit welhaus.com

Article: Lyttelton Harbour Information Centre

Image: Supplied by Welhaus, with thanks



Plenty To Share

Back for the Growing Season

With the warmer weather finally here the veggie and fruit growing season is also underway. As you grow and harvest, bake and process goodies from your garden don't forget about Plenty To Share.

Plenty to Share is now located next to the Port Hole on London Street, the stall is there to share your garden's excess and pick up goodies that others have shared.

To mark the growing seasons return children from Lyttelton Primary will be visiting the stall at 2:15pm on Wednesday 3 December. They will be placing some home sown and home-made goodies on the stall for the community to enjoy... See you there!

Plenty to Share is a simple way to share any excess produce from your garden with others in the community. Simply bring produce and place on the stall any time, then as you walk past, any time, feel free to take anything on the stall that takes your fancy. Together there is always Plenty to Share!

For more information contact Lottie Harris at Project Lyttelton 03 328 9243 or email lottie@lyttelton.net.nz

Article and Image: Project Lyttelton, with thanks

Tin Palace events

You're Invited: Attend the opening, pop in during the exhibition and/or attend one of the informative and interactive workshops. Gaby Reade demonstrates solar plate printing on December 7 with a teaser of her "Once Upon A Time" solo exhibition at Tin Palace in February 2015.

The 2013 WOW supreme award winner Tatyanna Meharry encourages you to have a go at miniature ceramics on 14 December at 1pm. The miniature works in this show will make great Christmas gifts.

Tin Palace, 13 Oxford Street, Lyttelton

Anyone Know Santa?

Help Us Find Santa for the Farmers Market

The Lyttelton Farmers Market are having a Christmas special farmers market on Saturday 20 December, and it wouldn't be complete without Father Christmas being present!

The role will be dressing up in the obligatory gear, talking to children and handing out lollies. Probably an hour or two is plenty .

If you can help, contact the Farmers Market main office 03 328 9243.

Article: Project Lyttelton via TimeBank, with thanks

Image: Google Search Result





Tree of Hope

1-13 December 2014

Last week the Tree of Hope project team, comprising the Garage Sale Organiser, Teresa Cameron; residents Flo McGregor, Hanah Sylvester and Lyttelton TimeBank Co-ordinator Wendy Everingham, got together to sort out the final details for the "Tree of Hope Project".

If you are unfamiliar with this project it began last year. The idea is to support people in our community with some Christmas cheer. Community members are encouraged to donate non perishable gifts that can be placed under Christmas trees located at the Lyttelton Library and the Lyttelton Harbour Information Centre. Presents will be collected from December 1-13 and distributed by community helpers the following week.

These gifts are distributed based on community suggestions. The organising team will leave small cards for you to write details on at the trees. They will need to know names, ages (especially for children) and contact details. Pop your suggestions into the contact boxes by the trees. You can nominate anyone: including families, children, individuals. Anyone is eligible.

Please note we also take nominations from right around the harbour.

The Tree of Hope project is a joint project between the Lyttelton Harbour Timebank, Lyttelton Garage Sale, Lyttelton Community House, Lyttelton Library and Lyttelton Harbour Information Centre. Support is often received from many businesses, schools and other community organisations.

Let us know if you would like to be involved. Jobs include wrapping presents and delivering the Christmas cheer. Call 03 328 9093.

Article: Lyttelton Timebank, with thanks

Image: Google Search Result

Cressy Trust Fund

Applications are welcomed to the Cressy Trust Fund. Senior citizens (65 plus) from around our harbour are encouraged to apply for funding that assists their health and wellbeing. Application forms are available at the Information Centre.

Meals on Wheels Helper

Can you help with Meal Deliveries in Lyttelton?

Lyttelton Community House are looking for two volunteers to help with the Community meal deliveries. They need one volunteer to assist on a Wednesday from 4.00pm to 5.00pm and another to assist on Fridays. If you are interested please phone Christine on 03 741 1427.

Lyttelton Plunket Playgroup

The last Playgroup for this year will be next week, Wednesday 10 December. Next year we will be meeting at the Lyttelton Kindy on Wednesdays 12.30pm until 2.30pm. All welcome.



Christchurch Visionarium

Container Shows Way to the Future

Anyone else wondering about the bright container on London Street? The Future Christchurch Visionarium is a shipping container, re-developed to share the news and excitement of the Christchurch rebuild. Inside, users can "fly through" the city whilst visualising city anchor project developments.

Over 50 video documentaries demonstrate exciting Christchurch happenings such as transitional architecture and suburban activities in Lyttelton, Aranui and New Brighton. There's even the opportunity to take a photo in front of a future Christchurch image and print it as a photo strip.

It will be in Lyttelton until Friday 19 December, located outside No.63 London Street, next to the Fire Station. Open seven days, 10.00am to 5.00pm.

Article: Thanks to www.diamondharbour.info for highlighting this event

Image: Lyttelton Harbour Information Centre

Diamond Harbour Sculpture on the Point & Live at the Point is Back

Sunday 28 Dec 2014 to Sunday 22 Feb 2015, 1.00pm to 4.00pm

Start looking for your picnic rugs and sunscreen - Live at the Point is gearing up for another great summer!

SPRIG is happy to announce that planning for these events is well underway with most bands booked and funding coming in. We have even had bands contact us this year which is fantastic - they have had such great experiences in the past or have heard about us and are very keen to be involved.

Not only that, but we are having our 2nd Sculpture on the Point with four new pieces currently being made which is very exciting. Look forward to seeing works from Sam Mahon, Hannah Kidd, Aaron Te Rangiao and Graham Bennett.

Calling all local produce growers or creators: we are keen to have a few more stalls on the Godley House grounds on Sunday afternoons. Locally grown or locally made produce sold by the creators is welcome. (Please note: as we have two great cafés on the doorstep, we would like the stalls to be along the lines of preserves, vegetables, plants, etc). For more details or to book a place (\$10 contribution) please contact Janet Luxton 03 329 4381 or Tracey Ower 03 329 4611 - we'd love to hear from you.

Follow SPRIG on the Diamond Harbour website www.diamondharbour.info and Facebook for up to date info. We look forward to a hot lazy summer down on the point.

Call for Sponsorship to Support Summer Music & Sculpture Events: SPRIG is looking for sponsorship from businesses and local organisations to assist with the running of these exciting and popular events. This year's combined events will cost just under \$30,000 to organise (artists, insurance, portaloos, promotional material, etc) - not bad considering it is nine events.

We have already secured some funding from CCC and are awaiting confirmation of other grant applications and business requests, however we would love to hear from anyone else who may be interested in sponsoring us. Contact Tracey Ower 03 329 4611 or traceyower@gmail.com if you would like to receive further details.

Article: Via www.diamondharbour.info, with thanks



Lyttelton Harbour Fruit n Vege Collective

New Project

Initiated by Lyttelton Harbour Timebank member Jill Larking, and working in partnership with Lyttelton's Community House, a Fruit and Vegetable Collective has come to Lyttelton.

History In Christchurch the Fruit and Vegetable Co-op began in October 2011 in the Eastern suburbs to enable families and whānau to buy affordable seasonal fresh fruit and vegetables. It continues to run successfully all over Christchurch and now over 1,500 packs are sold every week!

The Fruit and Veggie Co-op is a partnership between Christchurch Cathedral, many of the wonderful communities in Christchurch, and Community and Public Health. Anyone can join – as an individual, with your family/ whānau, church, community group, workplace, gym, or motorcycle club.

How it works in general. You pay just \$12 for each pack - 1 bag of fruit and 1 bag of vegetables (non organic). You pay one week in advance and there is no joining fee. The contents of the packs vary each week depending on what is in season.

You can buy more than one pack at a time – there is no limit. And you don't need to buy every week. You can buy a pack for others like your parents, children, neighbours, or even your best friend. You can also sponsor a pack for a family in need.

Each pack includes a recipe idea on how to use the fruit or vegetables in the pack, and some health information.

How it will work in Lyttelton. The Lyttelton Harbour Timebank and Community House are working together to bring this to Lyttelton. A weekly run by volunteers with either the Community House van or the Project Lyttelton truck to a distribution centre in Aranui will bring the ordered bags back to Lyttelton.

Your ordered bags can be collected from our volunteers at the pick up point at the Union Church Hall in Winchester Street every Wednesday between 12.30 and 2.30pm.

To participate all you need to do is register. Registrations can be made at the vegetable collection point [Wednesdays from 12.30pm to 2.30pm at the Union Church Hall on Winchester Street, Lyttelton].

When you sign up you also pay by cash or cheque for your bag a week in advance. This means if you come this week to register, your first delivery will be the following Wednesday. At the end of each Wednesday we'll ring through the orders for the following week.

Currently Jill has 85 families registered. This project is also available for people in Governors Bay and Diamond Harbour. All you will need to do is figure out how to get the bags from Lyttelton to your communities. Timecredits can be earned for any volunteer work done to support this project.

For more information contact Lyttelton Harbour Timebank 03 328 9093 or email timebank@lyttelton.net.nz

Article: Lyttelton Harbour Timebank Broadcast

Accommodation Wanted

01 LYTTELTON, CORSAIR BAY OR CASS BAY: We are a family of three plus a Belgium Shepherd. I work for New Zealand Post and my wife is a senior Lecturer at Lincoln University. Our daughter is attending CPIT and our dog is house trained. We are looking for a 2-3 bedroom home in mid January 2015 as our current landlords are moving back into our (their) home. Our budget is \$400-\$600pw but are open if the right house is available. If you know of any rental homes coming available please call Rory or Wendy McWilliam 03 967 -9583 or email us at rory.mcwilliam@gmail.com

02 LYTTELTON: 39 year old female looking for a new place to dwell - garden a plus! Steiner teacher, classical homeopath, biodynamic gardener. Musical, magical-meaningful, happy, healthy, whole. Thanks You. Phone Carrie 022 327 7015.

03 HOUSE SITTING EARLY JANUARY: Looking for house sitting / short stay for our friends who are coming to visit from 4th to 8th January 2015. Fabulous house trained family of four happy to look after pets, water plants etc. if you away longer and need pet/ house care we happy to cover it all if we can. Love to hear from you if you can help. Please call Ruth 3288731 or 0212 593086

Available for Rent: Long or Short Term

01: LYTTELTON Cressey Terrace four bedrooms, two bathrooms and fully insulated. Garage included. Available furnished or unfurnished at \$650 per week. From early October. Pets welcome, no smokers. Long or short term. Rebecca 021 071 0336.

02: LYTTELTON House for rent in Lyttelton. Situated in a quiet private right of way with easy flat access and great views, a fully furnished, spacious modern house with two/ three bedrooms, two/three separate living areas, big kitchen, two heat pumps, available 9 November for long or short term rent. \$750 a week. Please phone Michael at 328 8043.

03: LYTTELTON Furnished rental house, available for long term or earthquake accommodation. For Rent \$580 per week. Solid modernised house with 3 large bedrooms, one bathroom and separate toilet. It is on the East side of Lyttelton. Sunny and warm with two heat pumps, gas fire, double glazing and insulated. Furnished plus a security alarm. Decor has warm neutral colours. Large sunny deck. Incredible views. Beautiful garden. Suit a couple with an extra flatmate, or a family. No pets. No smokers. The price does not include power or services. Linen optional extra. Phone Michelle 0274160625

Room for Rent: Flatmate Wanted

TEDDINGTON Beautiful two storey house with wonderful harbour views, on a sunny Teddington farm has one double en-suite room available. \$200 p/week plus power, firewood, local calls and water are \$25 for one, or \$35 for two, per week. Garden space and grazing available. We are a couple in our 60's with an organic lifestyle, and want to share our self-built log house with flatmates keen to enjoy life. See www.bergli.co.nz. Ring Rowena or Max on 329 9118 Or 0274 829 410.

House For Rent: Short Term Only

03: LYTTELTON New home available for January and February 2015. We would prefer to have someone in for the whole period, so we would be willing to rent it within the EQC/insurance price range, around \$900/week. It will sleep six and is a great central space to enjoy. If anyone is looking for accommodation in Jan/Feb, they should contact Kris on 021 126 8524.

04: CASS BAY Lovely three bedroom property available to rent in Cass Bay. Available from end November to end January. Fully furnished property, five minutes walk from beach. Double garage, sunny garden, fabulous views across to Quail Island. Call Jac on 027 867 4087 or email jacquelinechester@hotmail.co.uk for more details.

EQC Accommodation

01: Short Term Rental in Lyttelton. Fully furnished one and two bedroom apartments. Call Kathy at Dockside 325 5707.

02: Lyttel Inn on Canterbury Street. Two bedroom cottage available for short term accommodation. Phone Gloria 03 328 706 or mobile 022 073 0014 or email lyttelinn@gmail.com.

03: Accommodation/house fully furnished. Home looking out over Corsair Bay. Bus stop at the bottom of section. Four double bedroom, two living areas, two toilets and double garage with off street parking. No fences, but pets okay by negotiation. Fully furnished. \$900/wk (power not included). Phone connection. Broadband. Call Heather on 027 211 7205 for details.

04: We have rental accommodation available in the Lyttelton area for Earthquake Repairs. Short or Long term, fully furnished, pets negotiable. Please phone Daniel on: 03 377 4939 or 021 994 297.

05: Short term rental in Lyttelton. Lovely three bedroom character home, heat pump, log burner, drive on access, stunning views, pets OK \$600 per week. Negotiable. Phone 021 060 2316.

06: Ideal stay during you EQC Repairs. Governors Bay Road, Cass Bay. \$200 a night. Four bedroom house with great views. Contact Claire 027 878 7867.

07: Having trouble finding accommodation in Lyttelton while earthquake repairs are being done? This might be an option for you on Sullivan Avenue, Opawa. Available for short or long term fully furnished accommodation. Great family home three bedroom, one bathroom, off street parking, power, phone, television, broadband. Pets negotiable. Please phone Sue 027 456 7011.

Lyttelton Harbour Gift Vouchers



Lyttelton Harbour Gift Voucher \$20

Lyttelton Harbour Gift Voucher \$20

Lyttelton Harbour Gift Voucher \$20

To...
From...
Expiry Date...
Signature

Work bonuses
Anniversary
Special something
Xmas gift
Act of kindness
Thank you
Xmas gift

Wedding gift
Leaving presents
Work bonuses
Anniversary
Wedding gift
Leaving presents
Special something

Thank you
Work bonuses
Anniversary
Wedding gift
Leaving presents
Special something

Special something
Leaving presents
Anniversary
Xmas gift
Thank you
Special something

Thank you presents
Making a difference
Anniversary
Work bonuses
Leaving presents
Act of kindness
Anniversary
Special something
Making a difference

Work bonuses
Anniversary
Xmas gift
Thank you
Special something

Thank you
Work bonuses
Act of kindness
Anniversary
Thank you
Xmas gift
Anniversary

Thank you
Work bonuses
Act of kindness
Anniversary
Thank you
Xmas gift
Anniversary



Supporting Local Businesses

Sold at the Lyttelton Harbour Information Centre, 20 Oxford St Lyttelton

LIVE

AT THE POINT



SUNDAY SESSIONS
GODLEY HOUSE
DIAMOND HARBOUR

1:00PM - 4:00PM
28 DEC - 22 FEB

SCULPTURE

ON THE POINT

OPEN TO PUBLIC
STODDART POINT
DIAMOND HARBOUR

ALL DAY EVERY DAY
28 DEC - 22 FEB

THE WORKS OF
7 GREAT NZ
SCULPTORS
BURSTING OUT OF THE
COASTAL
VOLCANIC
LANDSCAPE

in

miniature

a
group
show
of
small
art
featuring:

Ira Mitchell-Kirk
Gaby Reade
Simon Edwards
Deanna Gracie
Gaylene Barnes
Bruce Aitken
Sue Upritchard
Kristin Hollis
Jen Kenix
Belle Wear
Debra McLeod
Elfi Spiewack
Tatyanna Meharry
Renate Galetzka
Frankie Bakker



OPENING
3 December 2014
Wednesday
5:30-7:30pm

EXHIBITION
4-21 December 2014
Thursday/Friday
12-4pm
Saturday/Sunday
10am-4pm

DEMONSTRATION
7 December 2014
Sunday @ 11am
Solar plate
printing demo
with Gaby Reade.

WORKSHOP
14 December 2014
Sunday @ 1pm
Clay workshop
mini buckets with
Tatyanna Meharry

TIN PALACE

www.tinpalace.co.nz

f: Tin Palace Lyttelton

13a Oxford St
Lyttelton

harbour arts COLLECTIVE



SHARE:

**Your excess produce, preserves
and home made food.**

Place on the stall anytime.

TAKE:

**Anything from the
stall that you need!**

RUNS FROM

1-13 DECEMBER 2014



ADD SOME **CHRISTMAS CHEER/LOVE** TO RESIDENTS WITH DONATIONS OF **NON-PERISHABLE FOOD AND GIFTS** (NEW AND PRE-LOVED).

TimeBank member and Garage Sale coordinator, Teresa Cameron, is working with a team to decorate a Christmas Tree at the **Lyttelton Library** and a smaller version at the **Lyttelton Information Centre**. Gifts left under the trees will then be distributed to residents based on your nominations. A nomination box will be under the tree, write down the name and address of **someone you think needs some Christmas cheer** and then on December 13th the organising committee will distribute the gifts based on the nominations. Donations can be left under the trees from 1st - 13th December.

Monday 24 November 2014

By-election for Lyttelton–Mt Herbert Community Board

A by-election will be held to elect a new Lyttelton–Mt Herbert Community Board member after the resignation of Jane Broughton on Tuesday 4 November.

With more than 12 months to the next triennial election a by-election must be held, but with statutory holidays on the way, the usual timetable will be changed slightly.

Public notice of the election and call for nominations has taken place today (Monday 24 November 2014). Nominations will close at noon on Monday 22 December 2014. The election is a postal ballot – if more than one nomination is received, voting forms will be sent out via post, with polling day at noon on Tuesday 17 February 2015.

If you have any queries about this process please contact Electoral Officer Clare Sullivan, phone 03 941 8533, or email clare.sullivan@ccc.govt.nz.

- ends -

For more information please contact:

Dean Kilbride
Communications Adviser
Christchurch City Council
03 941 8698
027 499 5591
dean.kilbride@ccc.govt.nz



LIFT Library Update

December 2014

This changes everything: Capitalism vs the climate by Naomi Klein This is one of the most important books in LIFT.

It explains everything about what's wrong with our world (well, almost!). It tells us about everything that is being done and that can be done to change the situation and save our future (well, almost!) If Naomi Klein had included any more topics the book would have been too heavy! Don't let that put you off. It may take a lot of time to read; maybe you'll even skip some pages (I couldn't!) But it will enlighten you with its detail, thoroughly backed by references, on so many important topics, revealed in everyday language with clarifying examples. Not only does she explain how and why things have gone wrong with each aspect (climate change, fossil fuels' dominance, free market fundamentalism, big business and greenwashing, misplaced dreams of technology, greedy exploitation of the planet and its people, to name a few) ; she also explains for each one the actions that have been taken and are being taken to remedy them. She doesn't just leave that till a chapter at the end, as many writers do.

If you google this book you can read plenty of reviews. I don't have time to write a long one. I'll quote one section from her Introduction. After detailing the huge rise in global emissions since 2009 (a surge of 5.9% in 2010 – the largest absolute increase since the Industrial Revolution), she writes: “So my mind keeps coming back to the question: what is wrong with us? What is really preventing us from putting out the fire that is threatening to burn down our collective house? I think the answer is far more simple than many have led us to believe: we have not done the things that are necessary to lower emissions because those things fundamentally conflict with deregulated capitalism, the reigning ideology for the entire period we have been struggling to find a way out of this crisis. We are stuck because the actions that would give us the best chance of averting catastrophe – and would benefit the vast majority – are extremely threatening to an elite minority that has a stranglehold over our economy, our political process, and most of our major media outlets.”

One LIFT member has pointed out that she has not explained the rising tide of alternative money systems that could reduce the power of those controlling many of the problems. A good point. Maybe that will be her next book? And more from her Conclusion: “..from here on, when we take, we must not only give back, but we must also take care. Fundamentally, the task is to articulate not just an alternative set of policy proposals but an alternative worldview to rival the one at the heart of the ecological crisis – embedded in interdependence rather than hyper-individualism, reciprocity rather than dominance, and cooperation rather than hierarchy. It is slowly dawning on a great many of us that no one is going to step in and fix this crisis; that if change is going to take place it will only be because leadership bubbled up from below. We are also significantly less isolated than many of us were even a decade ago: the new structures built in the rubble of neoliberalism – everything from social media to worker co-ops to farmer's markets to neighbourhood sharing banks – have helped us to find community despite the fragmentation of postmodern life.”

I think this book is so important I'm even considering ordering more copies. There are already three members on the reservations list. What do you think?

Because the content of this book caused me to change my plans for the LIFT Film Evening on Climate Change, and because it made me get on to writing this Newsletter much earlier than usual, I'm sending it early in the hope that it will encourage you to come to this film evening:

FILM EVENING : MONDAY 1 DECEMBER, 7.15PM

The Portal, 54a Oxford Street

Use the steps at the back of "the Grassy" or come down through the Community Garden from St Davids Street.

FILM: China and the USA

Have done a deal to reduce Climate Change, but it's not enough.

What else can be done?

What can we do?

NEW STOCKS

Here are a few of the books I've chosen for LIFT from the 3 cartons that were donated by a new member. I haven't had time to read any of them, so can only provide simple information from the covers or introductions. If you would like to read any and write a review, LIFT would be happy to give you some Timebank hours!

The blue day book: a lesson in cheering yourself up by Bradley Trevor Greive Photos of animals in amusing situations, with texts.

Bring on the Apocalypse: six arguments for global justice by George Monbiot This collection of essays deals with such aspects as Arguments with God, with nature, with war, with power, with money, and with culture. (I'm reading it now. He pulls no punches, with his ironic humour helping!)

Hothouse Earth: the greenhouse effect & Gaia by John Gribbin This was "the first book to examine the greenhouse effect against a broader background of natural climatic processes.....It is comprehensible and readable, and explains not just why the world is getting warmer, but also what can and must be done to slow the pace of climatic change and to prevent Gaia – the web of life – from suffering irreversible damage."

Meditation: the most natural therapy by Judy Jacka "Discover the effect meditation has on relaxation, energy, concentration and creativity. Learn how meditation can improve the quality of your life by helping you to deal with the increased stresses of day-to-day living."

The selfish capitalist: origins of Affluenza by Oliver James "A rallying cry to the government to reduce our levels of distress by adopting a form of unselfish capitalism.....tells us why our personal well-being must take precedence over the wealth of a tiny minority..."

The under cover economist by Tim Harford "Ever wondered why the gap between rich and poor nations is so great, or why it's so difficult to get a foot on the property ladder, or why you can't buy a decent second-hand car? This book offers the hidden story behind these and other forces that shape our day-to-day lives, often without our knowing it."

I'll tell you about more of them next time. In the meantime, do come and look at the dozens of books still in the cartons! They are free to take away.

Today's quote: How sad to think that nature speaks and mankind doesn't listen. Victor Hugo, 1840

Juliet at LIFT Library

L=LE, I=Inspiration, F=Facts, T=Transition (LE=Living Economies – www.le.org.nz)

Ph. 03 328 8139 or 021 899 404 or email julietruthadams@gmail.com

Find us on Facebook: <http://www.facebook.com/pages/LIFT-Library/334943396599142?ref=hl>

Check out book reviews and more here: <http://www.lyttelton.net.nz/lift-library>



We are **100%** through our retaining wall work at Simeon Quay

Rebuilding earthquake damaged roads, water, wastewater and storm water pipes.

21 November 2014

Completion notice – Simeon Quay, Lyttelton

What	Retaining wall reconstruction
Where	Cunningham Terrace and Bridle Path, above Simeon Quay

- We have nearly finished our work repairing the soil slope above the Orion substation on Simeon Quay. Final tidy-up work is now underway.
- We will return your rubbish bins to your property early next week and normal collection service will resume in December.
- Work continues on Hawkhurst Road and is going well. We estimate that all work will be finished before the Christmas break.
- The SCIRT City Care team would like to thank you for your support and patience you have shown us during our work.
- If you have any questions, please contact us on **0800 632 889** or email **scirt@citycare.co.nz**



Email: info@scirt.co.nz
www.strongerchristchurch.govt.nz
 Follow us on Twitter @SCIRT_info



Programme funded by





24 November 2014

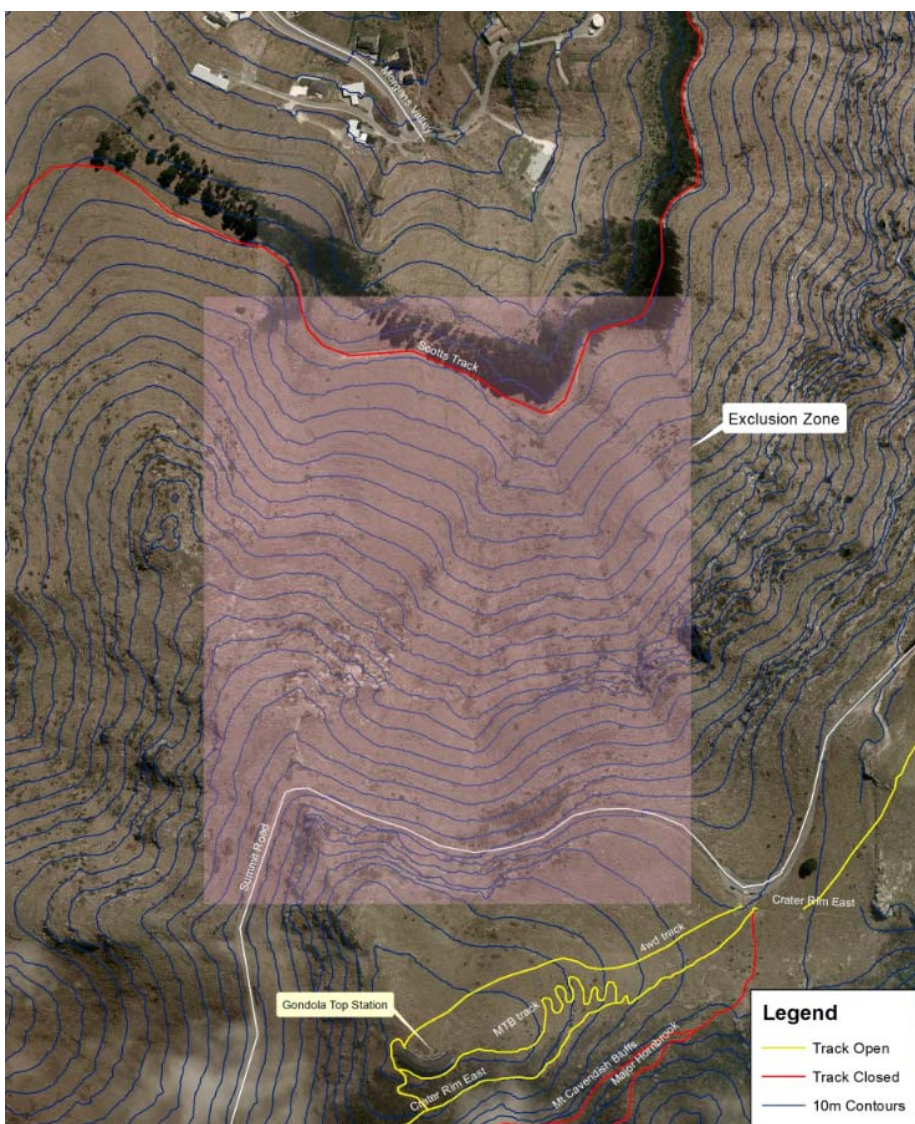
WORKS ADVICE NOTICE

ROAD CLEARANCE – SUMMIT ROAD (BRIDLE – MT PLEASANT)

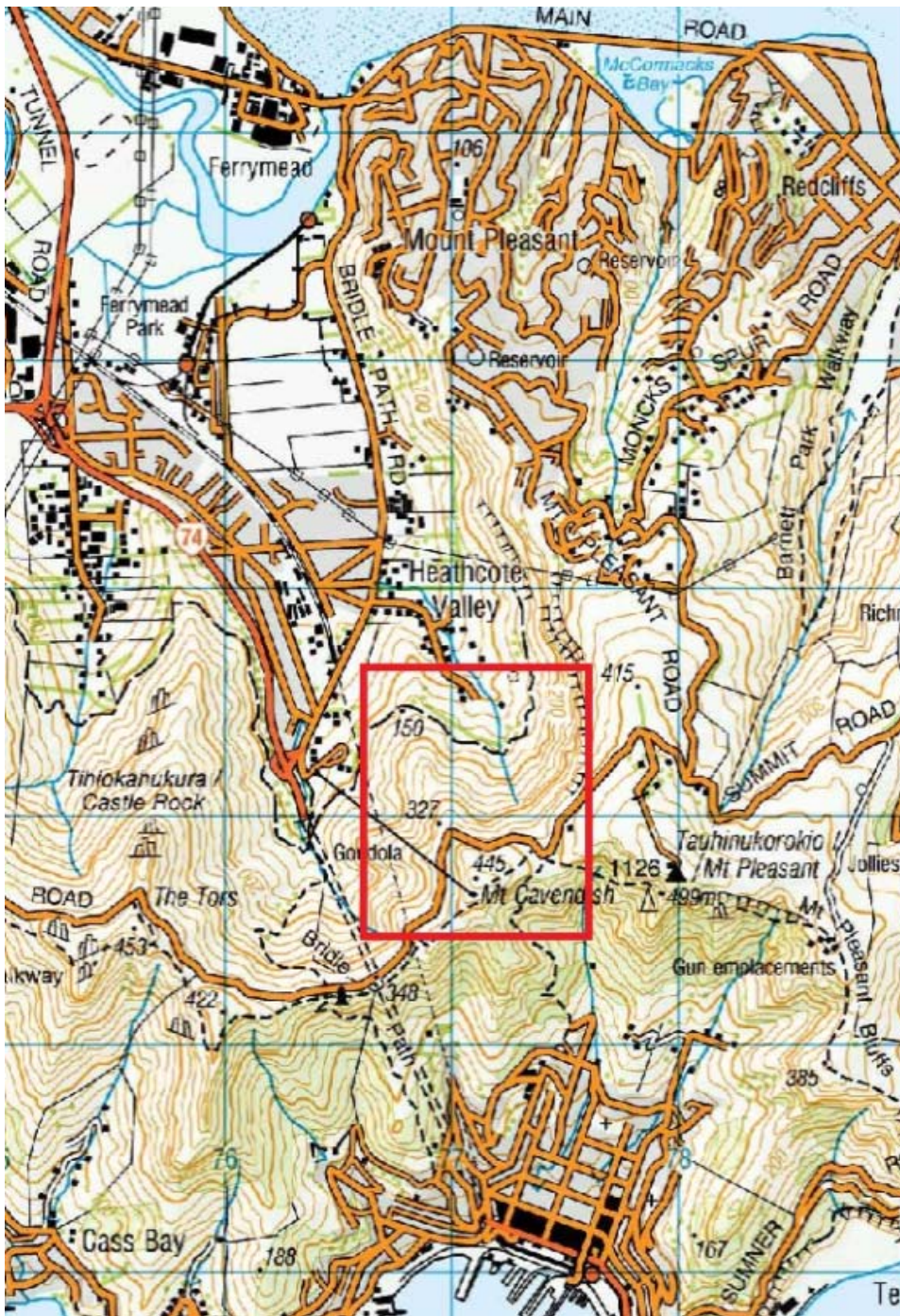
Source rock risk mitigation work is continuing at the Gondola Bluffs site above the Summit Road, in the Mount Cavendish Scenic Reserve. The next phase of work involves the clearance of rock debris from the road surface on the Summit Road between Bridle Path and Mt Pleasant. This work will begin on Monday 01 December and is expected to be substantially complete by end December 2014.

This work is part of the Council's wider programme of geotechnical work in the Port Hills.

It is imperative that access is restricted to the following exclusion zone:



Port Hills Geotech



Port Hills Geotech



Please note that this area of the Summit Road is within the CERA S46 road closure zone and is currently closed to the public. The road will remain closed for the duration of these works as is Scott's Valley Track which remains closed since the February earthquake. Access will be restricted and enforced with security sentries and gates throughout the course of the works. There is no access permitted to the public due to the multiple hazards that are present on this site.

Recreational users of the area including walkers, parapenters, rock climbers and bikers will be asked to leave site immediately, as they will be a danger to themselves if they breach the work site exclusion zone.

We look forward to your support through this part of the earthquake remediation works.

If you have any queries about this work, please contact the Council's Customer Call Centre on phone 941 8999 or send an email to porthillsgeotech@ccc.govt.nz

If you have any queries about the worksite please contact:

Craig Fraser
Fulton Hogan

Cell phone: 027 201 2311
Email: Craig.Fraser@fultonhogan.com

asbestosaware



Asbestos – is it in your home?

You're invited to a free information evening on asbestos for homeowners or those planning repairs or DIY renovations over summer.

Find out more about:

- What asbestos looks like and where it could be in your home
- How to test for it and manage it
- How to safely dispose of asbestos

Wednesday 10th December

5.30 - 7.00pm

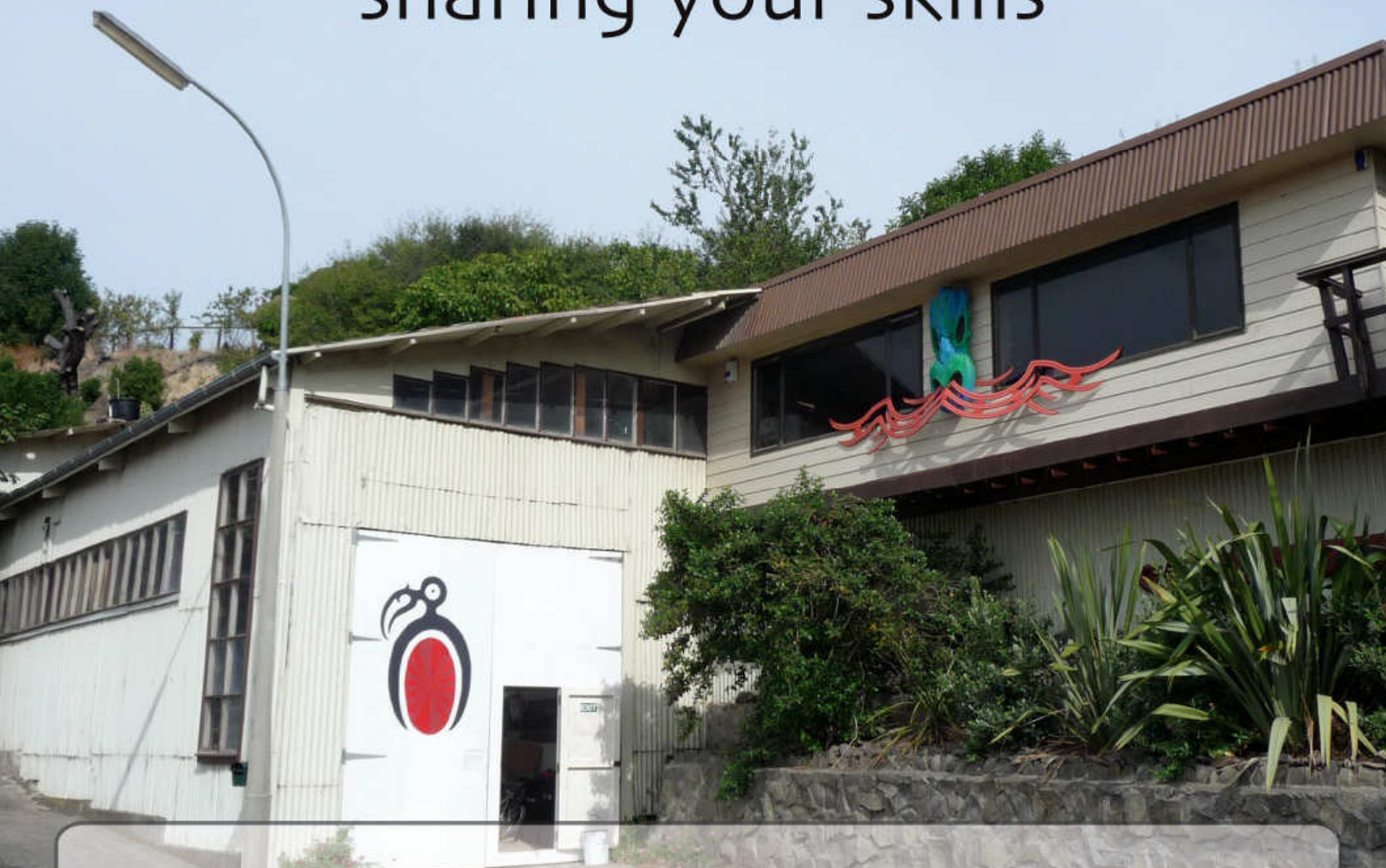
Addington Raceway, Christchurch

www.asbestosaware.co.nz



LYTTTELTON MENZ SHED

We are up and running
come and join us
by getting together and
sharing your skills



For more info contact Christine at Community House
christine@lytteltoncommunityhouse.org.nz
03 741-1427 or pop into 7 Dublin Street



KEEP CALM

AND ENJOY THE

BEST OF

BRITISH FARE



**EVERY SUNDAY AT THE LYTTTELTON CLUB
ROYAL ROAST DINNER OR FISH N' CHIPS
\$15 ADULTS \$10 UNDER 12s INCL DESERT
23 DUBLIN STREET - EVERYONE WELCOME**

KIWI 10 BUCKS THURSDAY

\$10 BURGER N CHIPS | \$10 FISH N CHIPS



Burger!

HOUSE



Delicious

AT THE LYTTTELTON CLUB

23 DUBLIN STREET | EVERYONE WELCOME

places to stay

Cass Bay Retreat Governors Bay Road, Cass Bay	027 878 7867	cassbayretreat.co.nz
Diamond Harbour Lodge 51 Koromiko Crescent, Diamond Harbour	03 329 4005 021 103 7080	diamondharbourlodge.co.nz Host: Robyn and Pete
Dockside Apartment 22 Sumner Road, Lyttelton	03 328 5707 027 448 8133	dockside.co.nz Host: Grant and Kathy
Governors Bay Bed and Breakfast Governors Bay Road, Governors Bay	03 329 9727	gbbedandbreakfast.co.nz Host: Eva
Governors Bay Hotel 52 Main Road, Governors Bay	03 329 9433	governorsbayhotel.co.nz Host: Jeremy and Clare
Little River Camping Ground 287 Okuti Valley Road, Little River	03 325 1014 021 611 820	littlivercampground.co.nz Host: Marcus
Lyttel Inn Canterbury Street, Lyttelton	03 328 7065 022 073 0014	lyttelinn@gmail.com Host: Gloria
Orton Bradley Park Camper Van Stay Marine Drive, Charteris Bay	03 329 4730	ortonbradley.co.nz

things to do

Black Cat Cruises Quail Island Adventure B-Jetty, Lyttelton Wharf [Below Oxford Street]	03 328 9078 0800 436 574	blackcat.co.nz
Christchurch Gondola 10 Bridle Path Road, Heathcote Valley	03 384 0310	welcomeaboard.co.nz
International Antarctic Centre 38 Orchard Road, Christchurch Airport	0508 736 4846	iceberg.co.nz
Jack Tar Sailing Dampier Bay Marina, Lyttelton	03 389 9259 027 355 5239	jacktarsailing.co.nz Skipper: Mike Rossouw
Orton Bradley Park Marine Drive, Charteris Bay	03 329 4730	ortonbradley.co.nz

thelyttelldirectory

2014 | 2015

your call to support local businesses around the harbour

eat, drink, dine

Godley Cafe

2E Waipapa Avenue, Diamond Harbour

03 329 4800

godleyhouse.co.nz

Meet: Michelle Anderton

Harris & Turner Delicatessen

8 London Street, Lyttelton

03 328 7358

Open Mon-Sat 10.00am to 6.00pm

Meet: Andrew and Glenn

London Street Dairy

34 London Street, Lyttelton

03 328 9350

Open Seven Days 7.30am to 10.00pm

Meet: Andrew and Glen

Roots Restaurant

8 London Street, Lyttelton

03 328 7658

rootsrestaurant.co.nz

Meet: Giulio and Christy

local experts

Blue Fusion

Web Design and Business Development

03 328 8646

021 255 7403

bluefusion.co.nz

Meet: Andy and Dana Dopleach

Lyttel Soft

Specialising in Accounting Software

03 328 8671

lyttelsoft.co.nz

Meet: Penny Mercer

Real Estate Agent

PO Box 94

03 328 7707

021 224 6637

realhomes.co.nz

Agent: Lynnette Baird

Sullivan Stone

Architectural Stonemason

027 665 078

sullivanstone.co.nz

Stonemason: Brayden Sullivan

health, beauty, fitness

Christchurch Yoga

Scout Den, Charlotte Quay, Lyttelton

021 071 0336

christchurchyoga.co.nz

Instructor: Rebecca Boot

Lyttel Beauty

32 Voelas Road, Lyttelton

03 328 7093

021 297 3885

lyttelbeauty.co.nz

Meet: Emma



LYTTELTON HARBOUR

localweeklyvibe

what's on around the harbour this week

November 2014

Monday

Pilates Classes	7.00pm	Naval Point Club	Contact: Jennifer Rice 027 204 1224
Diamond Harbour Yoga Classes	7.00pm	DH Play Centre, Scout Room	Adrian 022 109 6681 or 03 329 3395
Community Choir	7.30pm	Union Chapel, Winchester Street	All welcome. Jillie 021 152 8068 \$10 \$15

Tuesday

Story Time	11.00am	Lyttelton Library, London Street	Stories, Rhymes, Activities 2-4yr olds
Lyttelton Health Qigong for Seniors	10.15am	Union Church, Winchester Street	\$5 Geraldine Parkes 03 328 7284
Community House Shared Lunch	12.00pm	Comm.House, 7 Dublin Street	Make new friends
Science Alive!	3.30pm	Lyttelton Library, London Street	Free Range of Interesting Scientific Topics
Lyttelton St John Youth Division	6.00pm	St John Ambulance Station	52 London St, Lyttelton

Wednesday

Knit and Yarn Group	10.00am	Lyttelton Library, London Street	All Welcome. Bring your next project.
Lyttelton Play Group	10.00am	Union Parish, Winchester Street	All Welcome. Andrea Solzer 328 9346
Lyttelton Cubs	6.30pm		Contact Mark Brabyn 027 281 6180

Thursday

Governors Bay Pre-School Music	9.15am	Governors Bay School Library	All Under 5s Welcome with Adult \$3.50
Walking Group, On the Flat	12.30pm	Lyttelton Community House	Contact Maureen 741 1427
Lyttelton Volunteer Fire Brigade	7.00pm	Lyttelton Fire Station	Weekly Training New Members Welcome
Governors Bay Volunteer Fire Brigade	7.00pm	Governors Bay Fire Station	Weekly Training New Members Welcome
Contra Dance Night	7.30pm	Private Address, Cass Bay	Contact Bill 03 328 8985 \$5

Friday

Baby Time	10.30am	Lyttelton Library, London Street	Stories, Rhymes, Activities Under 2yrs old
-----------	---------	----------------------------------	--

Saturday

Lyttelton Farmers Market	10.00am	London Street, Lyttelton	Fresh produce; Live Music; Buskers and More
Lyttelton Garage Sale	10.00am	25 Canterbury Street, Lyttelton	Second Hand Bargains and More
Harbour Bazaar Market	10.00am	Cnr London and Oxford Streets	Local Artists, Bric a Brac and More

Sunday

Combined Church Service	10.00am	Union Church, Winchester Street	All Welcome
St Josephs Worker Catholic Church	5.30pm	21 Exeter Street, Lyttelton	All Welcome

Monthly Community Events

Lyttelton Lions	7.30pm	Lyttelton Community House	Contact Mary 03 328 8523
Second Tuesday Each Month			
Lyttelton Mt Herbert Community Board	9.30am	October at Orton Bradley	Meetings Open to the Public
Third Wednesday Each Month			
Lyttelton HBC Civil Defence	7.00pm	Lyttelton Information Centre	Contact Wendy Everingham 03 328 9093
Governors Bay Civil Defence	7.00pm	Governors Bay Fire Station	Contact Frances James 03 329 9560
Third Wednesday Each Month			
Lyttelton Garden Club	1.30pm	Union Parish, Winchester Street	Dot 332 3283 or Ann 328 8917
Fourth Monday Each Month			
Dance Workshop	7.30pm	Lyttel' Primary Hillside, Voelas Rd	Contact Jan 03 328 8977 \$10p/session
Fourth Thursday Each Month			
Lyttelton Museum Historical Society	10.00am	-	Contact Liza Rossie
Last Saturday Each Month			

LYTTELTON HARBOUR

lyttelharbourvibe

December 2014

events and performances around the harbour

02 Tuesday

Happy Hour	5.00pm	Fat Tony's, London Street	5.00pm to 7.00pm Daily
Artist Showcase Open Mic Night	7.30pm	Wunderbar, London Street	Free Event

03 Wednesday

Happy Hour	5.00pm	Fat Tony's, London Street	5.00pm to 7.00pm Daily
Free Pool and Pizza Night	5.00pm	Lyttelton Club, Dublin Street	Be a Local, Join the Fun at the Club

04 Thursday

Members Jackpot - NOW \$1,550!	4.00pm	Lyttelton Club, Dublin Street	Be a Local, Join the Fun at the Club
\$10 Fish n Chips or Burgers n Fries	5.00pm	Lyttelton Club, Dublin Street	Be a Local, Join the Fun at the Club
Happy Hour	5.00pm	Fat Tony's, London Street	5.00pm to 7.00pm Daily
Midge McCleary	8.30pm	Porthole, London Street	Free Event
Devlish Mary and the Holly Rollers	9.00pm	Civil & Naval, London Street	

05 Friday

Happy Hour and Free Nibbles	4.00pm	Lyttelton Club, Dublin Street	Be a Local, Join the Fun at the Club
Ben Wilkinson Early Evening Session	5.00pm	Porthole Bar, London Street	Free Event
Happy Hour and Jackpot Night	5.00pm	Fat Tony's, London Street	5.00pm to 7.00pm Free Nibbles

06 Saturday

Sports on the Big Screen	5.00pm	Lyttelton Club, Dublin Street	Join the Fun at the Club
Happy Hour	5.00pm	Fat Tony's, London Street	
Torque	8.30pm	Porthole, London Street	Free Event

07 Sunday

Afternoon Jazz with Carmel and Friends	3.30pm	Freemans, London Street	Free Event
Sunday Afternoon Jam Session	3.30pm	Porthole Bar, London Street	Free Event Charlie the Blues Man
Best of British Fare	5.00pm	Lyttelton Club, Dublin Street	\$15 Roast Dinner or Fish Chips incl. Dessert

Tin Palace November Exhibition "In Miniature"

View, with the opportunity to purchase - landscapes painted on matchboxes by Simon Edwards, figures painted on small found ornaments by Deanna Gracie, miniature tools and musical instruments by Bruce Aitken; intricate ceramic work by Tatyanna Meharry, Debra McLeod and Renate Galetzka and plenty more... In this exhibition Tin Palace's mini space is transformed with a diverse selection of miniature works by artists that work on a miniature scale and artists experimenting with a new scale and materials.

Exhibition open from 3 December to 21 December. Thursday, Friday 12noon to 4.00pm and Saturday, Sunday 10.00am to 4.00pm. 13a Oxford Street, Lyttelton.

LYTTELTON HARBOUR



Spring Time Lupins

Matt Searles is a local amateur photographer who's passion is the varied landscapes, wildlife and night skies of Banks Peninsula/Horomaka and Lake Ellesmere/Te Waihora. Matt has lived in and photographed the Banks Peninsula area for over a decade, and is member of the Diamond Harbour Camera Club . His daily photo blog can be viewed at www.blipfoto.com/horomaka.

Lyttelton Harbour Review is proudly sponsored by:



Lynnette Baird | Licensed Real Estate Agent
P: 03 328 7707 M: 021 224 6637
E: lynnette@realhomes.co.nz
W: www.realhomes.co.nz