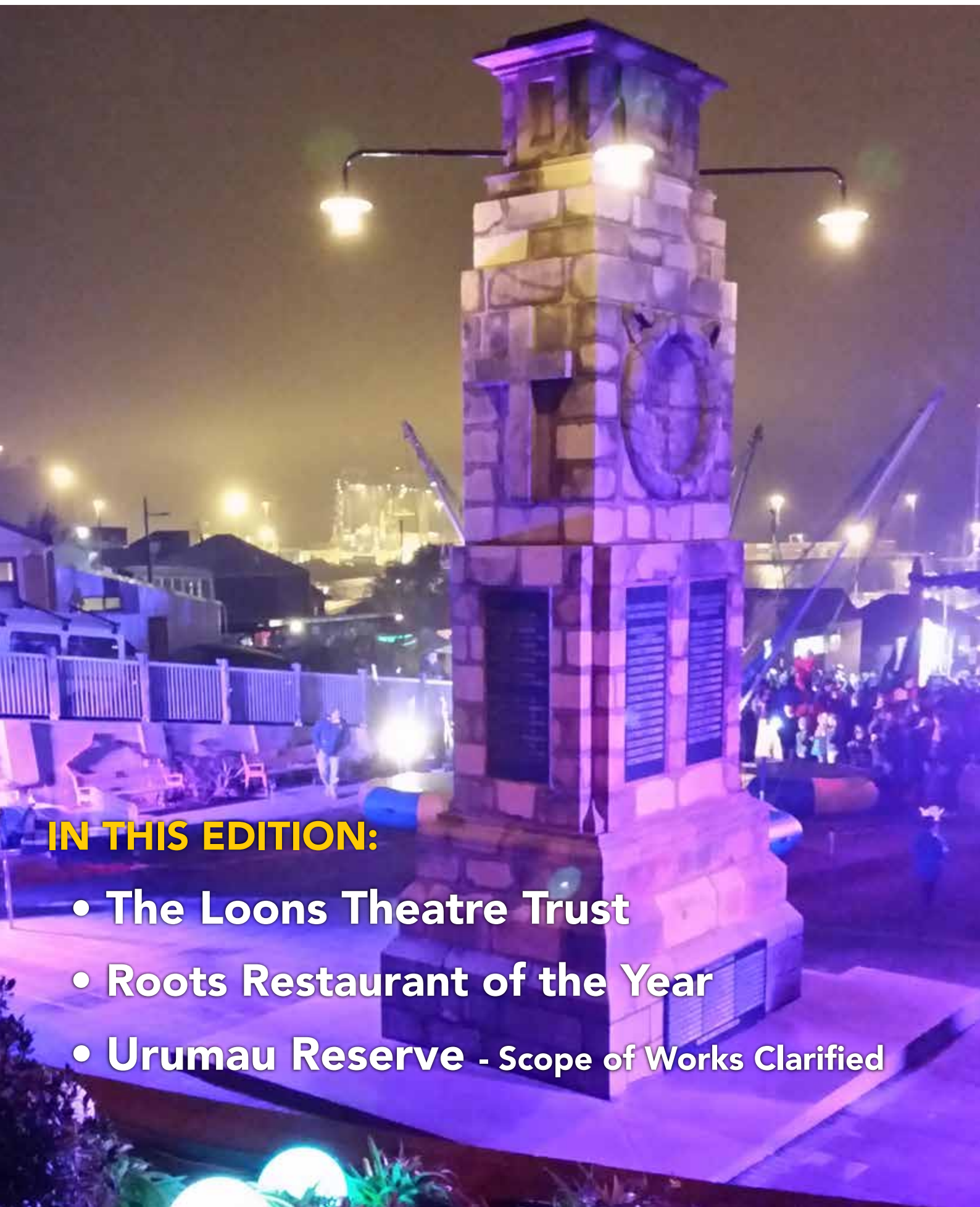


LYTTELTON REVIEW

June 2015 • Issue: 146

PURAU • DIAMOND HARBOUR • CHURCH BAY • CHARTERIS BAY • GOVERNORS BAY • RAPAKI • CASS BAY • CORSAIR BAY • LYTTELTON



IN THIS EDITION:

- **The Loons Theatre Trust**
- **Roots Restaurant of the Year**
- **Urumanu Reserve - Scope of Works Clarified**

Festival of Lights, As always a great night.

A big thank you to organisers, volunteers and the wider community who support this event year after year



Photos Lyttelton Information Centre.





We have a NEW home in Lyttelton!

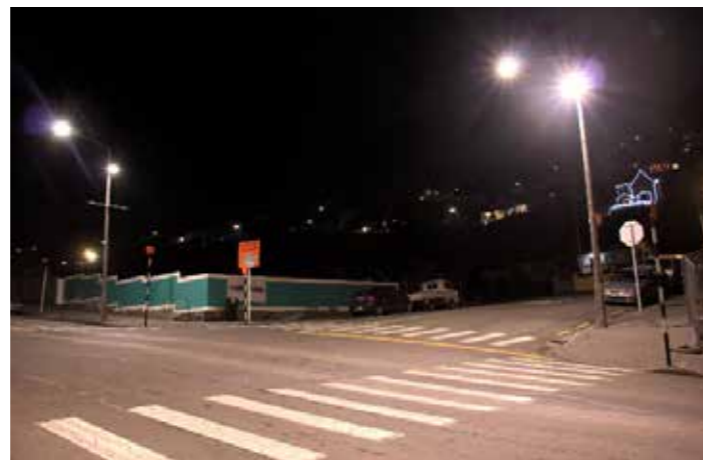
Over the past twelve months we have been working with Lyttelton Primary School and the Ministry of Education on developing the new Lyttelton Primary School hall into a dual purpose hall & theatre facility. We are excited and thankful for the opportunity that Lyttelton School & the MoE have given us, and have signed a Memorandum of Understanding with the MoE that will essentially provide a venue that is school hall by day/theatre and performing arts education by night and weekends.

Our original intention post quakes was to continue our occupancy at the Workingmens Club Lyttelton Inc premises at 16 Canterbury St, and indeed worked with the Club on designs and funding support. But the lease terms that WMC eventually offered were unworkable from the The Loons' point of view. The Loons sought mediation but WMC would not change its offer so The Loons will not now be leasing 16 Canterbury Street. We do wish the WMC well in rebuilding the Theatre that the WMC received funding for, to deliver the outstanding arts and community facility at 16 Canterbury Street The Loons envisaged in the planning.

At our new venue, which we will call LAF (the Lyttelton Arts Factory)

Our goal is to create a place of performance and performing arts education with a view to extending that education across all sectors of the art community. So who knows - you might be attending an art class or writing workshop sometime in the next 18 months!

It will be fitted out with retractable seating for 130 which will allow the space to quickly and easily transform from hall/empty box to tiered theatre seating for both school and Loons use. A full lighting and sound rig will be installed to make sure those moments of magic will transfer from the old venue to the new.



The future site of LAF, home of The Loons. The 18 metre x 12 metre hall/theatre space will be situated right on the corner of Oxford Street and Sumner Road in Lyttelton. And as the Lyttelton Festival of Lights wraps up I thought what better time to catch a pic than a clear, calm mid-winter night with houses lit up behind.



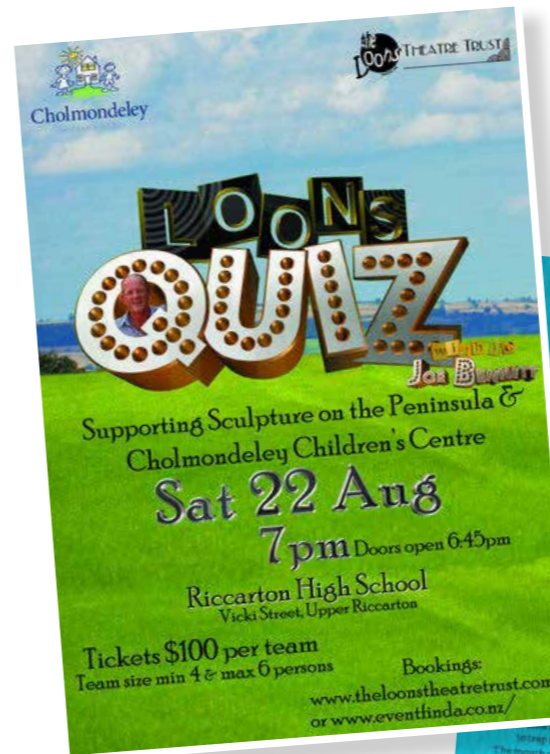
The LAF - Lyttelton Arts Factory foundations on site are well underway. Next time you're passing check out the progress for yourselves!

At this stage the building is scheduled for completion in mid-April 2016, and from there we think it should be about another month to install seating, lighting and sound. So hopefully within twelve months we should be inviting you to a housewarming of some description - we can't wait!

In between now and then we have a whole bunch of dollars to raise (about \$300,000 to be more precise) but we'll let you know in a later how you can help us with this. Of course if you have any ideas on how you could help then please let me know!

Upcoming Shows we'd love you to come to

We have some classic Loons fare for you coming up in August and September. To find out more info and make a booking go to our new website www.theloons theatretrust.com



August 22 sees the return of another Loons Quiz, with Quizmaster Joe Bennett. We want to make this one a cracker, so tell your friends and book in nice and early. Is it a quiz? Is it a show? You decide as you & your team negotiate five rounds of questions and performances. Get a group of 4 - 6 together, and then book in once for your team - no need to book in individually per ticket, saving on booking and transaction fees for you all!

We are excited to be a part of the Christchurch Arts Festival this year, and our premier season of Trapped runs from 3 - 6 September right in the heart of the Arts Centre in Christchurch. Directed by Mike Friend, our show will transform the solo shows of Tom Trevella, Sophie Ewert and Skye Broberg into one combined performance expertly linked and woven together with dialogue from Joe Bennett. Tickets go on sale for our production from this Monday.

New ways to keep up with us

If you haven't checked out and saved our new website www.theloons theatretrust.com into your favourites then please do so when you've got five minutes to spare. In it you'll find recent news, along with show info, upcoming performances, education classes and much much more..

We have a youtube channel where we'll post promotional video of performances, along with extra footage and interviews from behind the scenes. And if facebook is your thing, then we're here too!

The Loons on the airwaves

The Loons hit the airwaves on Sunday 14 June! Mike and Darryl talked to Lynn Freeman about the Loons of past, present and future on National Radio's Standing Room Only programme.

We are now a Charitable Trust

One of the things we've been working away at in the background is to make sure that we have the right organisational structure behind us so that Mike and Darryl and the team can keep doing what they do. We determined that fully utilizing our charitable trust that we'd established a few years back was the best way forward.

So while you'll still see much of the same at the 'coalface' we've got a great team in behind supporting and ensuring that we stay focused on those things that The Loons does best - education, professional performance & community events. Joe Bennett chairs our team of trustees : harbour basin locals Helen Sellwood, Brent Stanaway and Annie Horgan. And our fundraiser Kate

Anastasiou is working away at securing us our much needed dollars for the new venue fitout.

Thanks for reading, and thanks for your support. See you at our next event,

Darryl, The Loons

Upcoming Events

Loons Quiz
22 August, 7pm

Trapped
(Christchurch Arts Festival)
3 - 6 September, 8:30pm

Lyttelton Historical Museum Society Incorporated

ANNUAL GENERAL MEETING OF MEMBERS

At St Saviour's at Holy Trinity
17 Winchester Street, Lyttelton
2.00pm Sunday 28th June 2015

The meeting will be followed by
a talk by Anglican Diocesan
Archivist Jane Teal on the
history of St Saviour's at Holy
Trinity. There will also be an
opportunity to look around the
newly opened church.

New members welcome.

For more details email info@lytteltonmuseum.co.nz



Lyttelton Historical
Museum Society Inc.
PO Box 95 Lyttelton 8841

lytteltonmuseum.co.nz

Restaurant of the Year! Roots is Amazing

This time last year Roots Restaurant won its first Cuisine NZ Good Food Hat. A year later and owners Giulio Sturla and Christy Martin are now celebrating their achievement "New Zealand Restaurant of the Year and Innovation of the Year". Added to the titles are two hats and Lyttelton is the location of a very special little restaurant.

What a remarkable food journey. Often in life you come across exceptional people who you know are going to do something great. Giulio and Christy fit that mould. When they arrived in Lyttelton five years ago they had a great vision for food based on their knowledge of European food culture. They were not locals but originated from the America's. Not being local can be an advantage. They looked at the food possibilities around our harbour with fresh eyes and between them they were amazed at what grew locally. Foraging is a part of their daily lives and as they got to know the place and all the amazing things that grew wild here.

Giulio started creating food around the interesting ingredients they were finding. Initially these ideas were tested on friends, then the supper clubs began, the dinners in private homes, Tommy Changs and then finally their restaurant Roots opened in November 2012.

There are so many things that set the pair apart from the main stream restaurant scene. As Giulio says "We are much more than just a restaurant. We feed also the soul, mind and spirit". Together they lead a life that celebrates nature. They value the special things that come from our amazing place -the mushrooms, herbs, fruit, sea weed, special grasses and all the other little delicacies that are found here. They have spent time getting to know the natural cycle that exists here. Soil type, climate, terrain all make an impact on the food that we have in our region. They look at the totality of the food package. From the soil to the producers to the climate, it's much bigger picture thinking than simply cooking the food and serving customers. You could say they take a holistic view of the food cycle.

Roots has been brave and developed a restaurant style that most diners will not be familiar with. "We only have a degustation menu", said Christy. That means there is no menu to choose from nor even to see until the end of the evening. Food is sourced and the menu created daily. "If you have a food allergy or dietary requirement that's no problem, just let us know at the time of the booking and we design your menu around



Giulio Sturla and Christy Martin. Photo Stuff.co.nz

that" Christy said. Interestingly recipes also don't rate high on their culinary list. Its cooking techniques and food combinations that drive the style of the food they produce. They are experimenting daily.

This restaurant is all about an entire lifestyle. The owners are extremely close to the producers, the local surroundings and the local people. It's not just about serving diners. "It's about doing things well and honestly" says Giulio. "It's about being true to yourself"

Focusing on money has been a very small part of the restaurant. This restaurant was built by the love and support of the community. People stepped up to help fit the restaurant out and make the garden. People paid for dinner tickets in advance so the couple could build up a small amount of capital. They certainly do not fit the regular business model and they should be an inspiration to many young people that if you have a dream and a vision you can do it by hard work and the support of a village in this case.

These attributes must have shone through to the Cuisine Judges. Giulio had no idea who the judges were or when they visited. "The first we knew we had won something was the week before the official winners were announced. We were asked to do some promotional material. Next thing we knew we'd won two awards, Restaurant of the Year and Innovation of the Year".

Congratulations to everyone involved with Roots. What an amazing food journey.

Roots is open Tuesday to Saturday from 6.00pm
Lunch by appointment Wednesday to Saturday
Phone 328 7658
info@rootsrestaurant.co.nz

Environment Port Hills



PUBLIC MEETING on Dairy Farming — All welcome
Tuesday, 30 June 2015 at 6.30pm
Twisted Hop, Woolston



Guest speaker—Alison Dewes

Alison will talk about the big issues with dairy farming in New Zealand:

Regional Planning processes

Where the dairy industry is heading

What it all means for farmers and the rest of us

Alison trained at Massey University and has practised as a large animal veterinarian throughout the Waikato, Bay of Plenty and as a flying vet in Queensland. She is a fourth generation farmer and has dairy farmed in both NZ and Australia for 25 years. While farming in Australia she assisted in the design and implementation of the “On Farm Quality Assurance Schemes” for Nestle, and managed the establishment of Intelact Agribusiness Consultancy before joining Commonwealth Bank of Australia in 2007. Since returning to NZ in 2009, Alison has completed an MSc combining freshwater ecology, policy and nutrient management in agriculture and has been extensively involved in commercial farm consultancy businesses.

Urumau Reserve Blasting and Access Issues Clarified

The Sumner Road re-opening project had quite a few locals including the Lyttelton Reserves Management Committee worried about adverse outcomes from the project proposals. The Resource Consent application submitted for comment indicated that Urumau Reserve would be closed for long periods of time, explosives would be stored on the ridge line, security fencing would stop local access for recreational users and so the list of negative outcomes went on.

On Monday June 15th the Lyttelton Reserves Management Committee had its bi-monthly meeting. Matt Engle from the City Council was able to update the committee on the actual plans proposed. He stated, “ the original consent paperwork looked at the worse case scenarios. We didn’t have experts on the ground looking at what would actually be done. We have now had a series of site visits and the work is going to be a much smaller scale event than envisaged in the consenting paperwork”.

“Magazine A as detailed in the project specifications will not be built” he said. This will be good news to local residents. The scale of the works proposed is

quite minimal so the container to store the explosives will not be needed. He also indicated there were no plans to add gravel to the existing four wheel drive track. “The impact on the reserve is going to be very minimal. I envisage only six days of blasting and all of that will be on the other side of the ridge” he said. The feared heavy traffic movements on our small streets will not eventuate. Explosives will be taken on site in small quantities daily for the small amount of work required.

Whilst the reserve will be closed for the few hours that blasting will occur, the long closures residents had feared will not eventuate. This is great news for the recreational users of the Reserve. Outcomes for our natural environment are good as well. Matt explained that the rocks are going to be shattered by the explosives. There will not be rock roll or damaging outcomes to the landscape. This is great news for the Reserve. This approach will ensure the biodiversity gains from community efforts over many years will not be lost.

Article Lyttelton Information Centre

View of Urumau Reserve



Between the Piles

The newsletter of the Dampier Bay Mooring Association
Volume 1 April 2015



Welcome to this the first edition of our association's newsletter. We hope you will find it informative and useful. It is our intention to publish "Between the Piles" randomly throughout the year whenever matters come to hand which we believe may be of value to our members and others who have an interest in the pile moorings at Dampier Bay. "Between the Piles" is available by email to anyone who requests it and hard copy is also available by post on request.

The Fate of the Pile Moorings

The plan for port recovery is now being led by Environment Canterbury (ECAN) who have received from LPC their plan and now have formed the "Preliminary Draft Lyttelton Port Recovery Plan" On 14 and 16 April ECAN held meetings prior to inviting formal submissions including the reclamation and repair of the port and development at Dampier Bay. Several of our association members attended and spoke at each of these meetings. Unfortunately while being presented as a consultation, in fact what really happened was that the audience were treated to a slick presentation which simply showed what ECAN, LPC and CCC intend. There was no consultation. Only clarification questions were permitted with a standard answer being "Put it in your submission". In short the ECAN plan will allow the LPC to proceed to remove the pile moorings and build a floating marina as a permitted activity. That means they will not need a consent and there would be no public hearing. THIS MUST NOT HAPPEN. It should be a discretionary activity to allow for proper consultation. The association has indicated that it supports a new floating marina to accommodate the desire for more safe moorings but not in place of all the existing pile moorings – in addition to them. The pile moorings are a heritage feature of some 90 years and would form a focus for a heritage precinct in what the LPC calls "preserving our past". ECAN needs to consider its community responsibility to protect existing berth holders, many of who are of modest means (the ordinary wage earner) with older boats and have been long term tenants. Keeping a couple of rows of pile moorings for the smaller boats would do this.

So while we left the meetings rather disappointed we did receive some help on making a submission and may have opened a door for further discussions with ECAN and LPC.

A History and Controversy

The pile moorings at Dampier Bay have been the subject of much discussion and debate over many years. What many people may not know is the long historical saga that lead to their being established or the subsequent events that have taken place over the ninety odd years since the piles were first driven into the sticky mud of the harbour bottom. At that time the pilings cost twenty-seven pounds fifteen shillings each and mooring fees were set at twenty shillings a year for small boats and thirty shillings for larger boats. How times have changed!

At that time the very responsible members of the Lyttelton Harbour Board were emphatic about insisting that the area of Dampier Bay should be set aside for the recreation and enjoyment of the local people with some emphasis on yachting and so a facility would be created to aid in the training of young people as future sailors.

In the next edition of Between the Piles we will continue the story of the first settlers and how Dampier Bay came to be what it is today. In later editions of our newsletter we will tell of the plans afoot for the Bay area and the likely consequences of some such plans.



One of the first photos of the pile moorings taken in 1926. Note the stock pile of piles on the shore waiting for placing. (From Lyttelton: Port and Town - Rice 2004)

Between the Piles

The newsletter of the Dampier Bay Mooring Association
Volume 2 May 2015



The Fate of the Pile Moorings

All 270 submissions to ECAN are now in and can be found on the ECAN web site. <http://ecan.govt.nz/our-responsibilities/regional-plans/lpr-plan/Pages/subs.aspx>. That is a lot of reading and there are many points of view presented. Now we move to the hearing stage 2 to 12 June. Here are a couple of interesting submissions: [The Lyttelton Harbour Issues Group](#) argue that the 27 hectares proposed reclamation is being asked for by the port at no cost. This could then be sold to private interests and thus the public have effectively given away 27 hectares. In return rather than giving public access to the land at Dampier Bay and establishing a marina for profit for LPC maybe they should be gifting this land and water to the public domain as compensation. That seems fair. [Val McClimont](#) submitted that there are legal reasons why the Port Company should not be enabled to build and manage a floating dock marina in Dampier Bay. Judge J A Smith's decision in Jan. 2001 denied exclusive use of that water-space. Their only interest in Dampier Bay is by virtue of their deemed consent to own piles there from which to operate a mooring business leasing those piles.

The official line that our association is taking is that we are supporting a marina development as there is a need for safe berths. However we have not supported any particular body owning the space or doing the development. We are strongly in support of a mix of some pile moorings and new floating berths. And we know that this model will still achieve the goal of about 200 berths in the designated area. It is a myth that floating marinas will fit more berths into the same area. The bottom line is that we want 2 double rows of pile moorings to remain at the western end for reasons of social equity (looking after long term berth holders who are on a limited budget), heritage (the vista of the pile moorings are a significant heritage feature and focus of a heritage precinct along with some other features) and environmental issues (tug wash, overspray and dust from dry dock are not so critical for older boats on pile mooring).

Ron Dards and Graham Batchelor meet with LPC's Development Manager, John O'Dea and Jarad Pettersson (Tonkin and Taylor) recently to discuss issues and present our plans and submission. Our mixed berth model is still open for consideration despite the LPC plan not mentioning it as no detailed plan has yet been done. We offered our help with planning and were assured that we would be consulted with further developments.

A History and Controversy

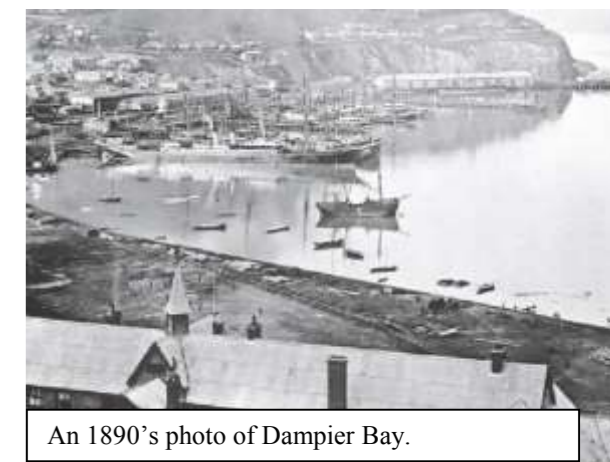
(summaried from manuscript written by Val McClimont)

In our last edition we began a brief synopsis of the past history of the pilings. Now to continue.

Actually the story begins on 30 August 1849 when Lyttelton was first gazetted as an official port of entry into New Zealand. The geography of the region is interesting. Lyttelton is actually a caldera, an ancient volcanic crater filled with fine mud, sticky, blue greasy mud laying deeply between steep rocky cliffs. This mud is a major complication for any underwater construction. Pile driving finds no solid bottom, hard fill simply vanishes into the mud.

By 1848 Lyttelton was a busy place. Very many ships were constantly arriving bringing settlers and whalers. Cargoes were moving in and out and the harbour flourished. Then on 10 December 1848 a small sailing vessel, the Fly, three days out of Wellington under the command of Captain Thomas and carrying two surveyors, Mr. Cass and Mr. Torless, arrived off Purau. Their mission was very simple but it had far reaching effect. They were charged to locate a site for the port which was to be the launching site for the future province of Canterbury. After six weeks of exploration they decided upon what is now Christchurch and the supporting port of Lyttelton. So the saga began. In 1853 the port's first harbour master, Capt John Parsons was appointed and took up residence in a large house on the terrace above Dampier Bay. At that time the Bay was shallow with a sandy foreshore and early paintings show small craft careening there.

In 1879 reclamation work commenced and in 1877 the Harbour Board succeeded the Provincial Government as administrators of the port. In 1879 they approved the reclamation of about five acres of seabed to facilitate the establishment of a railway line to support the graving dock and the western breakwater. Although there was considerable debate about the placement of wharves at that time Dampier Bay was largely left out of the discussions because there is a solid volcanic reef under the mud there and dredging would not produce any useful depth of water. So Dampier Bay was given over to swing moorings with small craft scattered over the area which is now occupied by the pilings,



An 1890's photo of Dampier Bay.

What's News at the Garage Sale?

During April and May total sales at the Garage Sale were **\$9,519** was fundraised:

The following groups benefited:

Community Garden	\$249
Waste Matters	\$212
Lyttelton Primary School	\$635
Tin Palace	\$242
Lyttelton Tennis Club	\$242
Anglican Parish	\$377
Lyttelton Netball	\$250
Lyttelton Museum	\$507
Diamond Harbour Scouts	\$213
Lyttelton Sea Scouts	\$340
Lyttelton Harbour Timebank	\$1059
Inkind donations to organisations and individuals	\$125
Garage Sale Team	\$5068

This pays for staff wages, dump fees and the balance supports other Project Lyttelton activities

Themed Fortnights

We are introducing themes at the Garage Sale. Every two weeks you'll be able to pop in and see what the new focus is. Beginning June 17 it's all about Crafts. Look out for items that can be made with pre loved clothes and fabrics. Then use



recycled wool, paper, buttons and bows to create new things. Watch out for craft tools and then get making!

If you would like to book a community garage sale please contact Sue-Ellen Sandilands 328 9243. The wider community can book on the 1st and 3rd Wednesday of the month from 10-4pm and the 2nd and 4th Saturday of the month from 10-1pm. To run the sale all you need is your own team of volunteers (preferably 3-4 people) and the proceeds are yours less a small administration fee.

We are always seeking volunteers. If you would like to help please pop in and register with Claire or Teresa, alternatively leave a message at the Project Lyttelton Office 328 9243.

Finally "thank you" to everyone who supports the garage sale. Your donations and your volunteer time are so appreciated by our community.



Is food a problem for you?

Do you eat when you're not hungry?

Do you go on eating binges for no apparent reason?

Is your weight affecting the way you live your life?

**Call
OVEREATERS
ANONYMOUS**

Ph: (03) 365 3812.

**Listed in the help section in
the phone book**

The Listener

Brenda Walker
Diamond Harbour Writers Group

One rainy afternoon she asked herself what it meant 'to listen'? to really, really listen? and came to the conclusion that one could listen to any number of things or people yet in the end it was what one heard that could be a game changer.

Outside the window rain continued steadily pattering down. Although she could detect tweeting in the shrubs, the birds had not arrived on their afternoon foraging rounds. Today there would be plenty of worms around driven out of their holes by the soaking. Snails also would be having a feast on the exposed roots and fallen cellulose of grass stalks, to say nothing of newly planted spinach and lettuce.

The solid cloud cover convinced her that there would be no break any time soon in the weather so she put on her rainwear and stepped out. Nobody around on this somber afternoon, not even dog-walkers, that's unusual she thought, not a soul in sight, just me, the gulls and the rain. Glancing towards the coast, she saw the ferry making its way across the harbour and marvelled once more at the fact that all the water she could see came from above, all the clouds living in the mountains poured it down the rivers which gave it to the sea. Utter magic.

As she walked along it hit her again, what a gift water truly is. Every drop of it has a history, every molecule a mystery. Perhaps its been part of a waterfall, or dripped from alpine forest branches, lived in a flowing river or rushed over rocks in a mountain stream. Maybe its hung over the countryside in the form of mist or sparkled like diamonds in the morning dew. These raindrops which now gently brushed her face were on a journey which affected every aspect of living, a pure miracle of life without which nothing could exist.

Turning the final corner for home, she felt convicted of the unthinking ways she often discarded water, without valuing its true worth and in that moment of truth listening, what she heard was life's voice.

FERAL GRACE PRODUCTIONS PRESENTS



FEATURING FEATHER SHAW AS MC
SHOWGIRL BELLE DU JOUR
DRAG KING RICHARD B. HAYVE
CIRCUS
DANCE
BURLESQUE
COMEDY
LIVE MUSIC AND
MORE

OAMARU
FRI JUNE 12TH
BIRDLANDS
WINE CO
7.30PM
\$10

DUNEDIN
THURS JUNE 18TH 8.30PM
DOG WITH TWO TAILS
KOHA

LYTTELTON
FRI JUNE 26TH
WUNDERBAR 8PM
\$10

SCHOOL HOLIDAY WORKSHOPS

JULY 2015

**Colourful Creations in Pastel**

with Maxine Burney

Monday 6th July 10:15-11:45am

Create an "impression" of Lyttelton life. Starting at Tin Palace with some warm up exercises we will then step outside for inspiration to translate in to your own pastel painting.

Age: all ages

Cost: \$20. All materials included.

Bookings: maxineburney@xtra.co.nz; ph: (03) 3603312

Limited to 8 participants

Faces in Pastel: Facts, Fun & Fantasy

with Maxine Burney

Monday 6th July 1-3:15pm

Look at different face shapes, proportions, angles, colours and personalities and use your imagination to create a pastel portrait.

Age: 8 - 12 years

Cost: \$25. All materials included.

Bookings: maxineburney@xtra.co.nz; ph: (03) 3603312

Limited to 8 participants

**Upcycling workshops**

with Sarah Pritchett

Tuesday 7th July 9am - 12pm or**Wednesday 8th July 9am-12pm**

New ways with old books: Learn to turn old books into a place for your treasures and a book of pockets for storing artwork.

Ages: 7-12, 5 and 6 year olds are also welcome but must be accompanied by an adult as we will be using craft knives

Cost: \$20 per workshop. All materials included.

Bookings: wastematters@lyttelton.net.nz or phone 02108254606

Limited to 8 per class.

**Zentangle Drawing**

with Maria Lee

2 afternoons: Tuesday 7th July and**Wednesday 8th July 1-3pm**

Learn to draw beautiful art even if you have never drawn before. Zentangle is easy to learn as well as being a fun and relaxing way to

create beautiful patterns. Over two afternoons children will learn to draw Zentangle patterns and on the second afternoon will create a book with their Zentangle design on the cover.

Ages: Suitable for 10-13 years

Cost: \$40 includes all materials and covers both afternoons

Bookings: mariatlee@hotmail.com or phone (03) 3293359

Limited to 10 participants, bring a pillow if you would like to work on the floor.

**Anime/Manga drawing**

with Elijah Lopez

Monday 13th July 12:30-3:30pm

Make your own original character and bring them to life!

Ages: all

Cost: \$15 pp. Bring your favourite drawing utensils, some will be supplied.

Bookings: eljahnkita@yahoo.com.ph; 022 0525 383

Limited to 8 participants

**Creative Needlework**

with Maxine Burney

Tuesday 14th July 10am-12:30pm

Learn to stitch on fabric, create a spider web and basic fun stitches. Finish with beads and buttons.

Ages: 6-10 years

Cost: \$30 covers all materials

Bookings: maxineburney@xtra.co.nz; Ph: (03) 3603312

Limited to 6 participants

**Colourful Creations in Pastel**

with Maxine Burney

Tuesday 14th July 1.45 - 3.15pm

Using Nature as our inspiration for this afternoon's workshop, learn to use pastel in an expressive way.

Ages: Open to all

Cost: \$20 all materials supplied

Limited to 8 participants

Limited numbers apply

Bookings: Ph 3603312 email maxineburney@xtra.co.nz

From Page to Stage

with Melissa Miles

Wednesday 15th July workshop 1-3pm performance 3-3:30pm

Creating performance pieces/writing inspired by artwork from Tin Palace's July exhibition Beyond the Book. Parents are encouraged to attend the 3pm performance.

Ages: 8 to 12 years

Cost: \$20 per student

Bookings: 021 649 050 or email mmmiles@ihug.co.nz

**BOOK NOW,
LIMITED SPACES!**

TIN PALACE
www.tinpalace.co.nz

f Tin Palace Lyttelton

13a Oxford St
Lyttelton
harbour arts COLLECTIVE

For general inquiries:
Holly Cunningham
curator@tinpalace.co.nz
027 4466 816

Waitaha Paddling Club AGM

Notice is hereby given that in accordance with the rules of the Club the Third Annual General Meeting of The Waitaha Paddling Club Incorporated will be held in the Clubrooms, Magazine Bay, Lyttelton on Sunday 26 July 2015 commencing at 11:00 am

Dampier Bay Moorings Association

For more information contact Secretary Graham Batchelor Email: grahambatch@gmail.com
Web Site : <https://sites.google.com/site/dampierbay/>
Facebook: <https://www.facebook.com/dampierbay>

Cass Bay Reserves Management Committee Meeting

Wednesday 1 July 2015 at 7.30pm in the Ward Room, Steadfast, Governors Bay Road, Cass Bay
AGENDA, Apologies

Confirmation and corrections to minutes of previous meeting (6 May 2015)

Matters arising from previous meeting

Meeting Rules/Guidelines
Correspondence
Ongoing Business/Priorities
Tracks
Plantings
Weed Control
Development Plan
Other Business
Next Meeting

Lift Library News

Film Night MONDAY 6th JULY 7.15 p.m.
At The Portal, up the drive beside the swimming pool, at 54A Oxford St
Well heated, and warm rugs and drinks
Films and discussion.

MONEY

Why is money causing many problems?
Why isn't it safe in the bank?
What alternatives are working well?
What new ideas have been suggested?
e.g. new uses of Timebanking, taxes, and local currencies.
Come and hear speakers with these new ideas – Margaret Jefferies and Rex Verity!

Latest Book Review

Living in a warmer world: how a changing climate will affect our lives 2013 Jim Salinger (ed)

This book is a compilation of articles by scientists in several countries, each specialising in their own professional area. Some deal with issues which have less relevance to us in NZ, but they explain in great detail the causes of the aspect, its effects, and usually various ways to adapt to the conditions and even mitigate them. It's not simply a book telling us we must reduce our damage to the climate – it tells us how we can live in, and deal with the changing climate now and in the future.

It covers such topics as: Biodiversity; Rising sea levels and our coastal society; Glaciers and climate; Water resources; Food, including wheat, grasslands, viticulture and wine, livestock, marine fisheries; Health, including heatwaves, and infectious diseases; and the ways in which decisions are made and should be made. Some are New Zealand writers, but all provide information relevant to NZ. I skipped through a lot of the technical material to the end of each chapter (as I don't have time to read the whole book) where I usually found advice on what can and must be done now to live in this changing world.

I believe every Member of Parliament should read this book, and every local body member too. Anybody involved in the rebuild of Christchurch would gain from it.

Article Juliet Adams

Beca Heritage Week

This is just a quick reminder for all those community groups that wish to submit an application for Beca Heritage Week you must do so by Tuesday, 30th June. If you have any questions about your application please contact the 360 Degree Events team on 03 943 2237 or email karen@360de.co.nz.

Lyttelton Community Garden

Our wonderful Lyttelton Community garden has been within the Community for the last 16 years growing community, growing knowledge and growing food and being a part of many people's lives.

We are now looking at developing plans for the gardens to ensure that our Community Garden continues to meet the needs of its community now and into the future. As part of that process we would like to ask a few questions around what you might like to see happening within your community garden and hope that you might be able to spend just a few minutes completing this short survey.

The link is <https://www.surveymonkey.com/s/HSD7PRR>

Review Creators

Lyttelton Harbour Review is a 100% voluntary community newsletter initiative developed after the February 2011 earthquake. It's a Lyttelton Harbour Information Centre initiative produced by Chairperson Wendy Everingham and Committee Member Jenny-Lee Love.

The objective of the Lyttelton Harbour Review is to help keep local residents informed with what is going on in the wider Lyttelton Harbour community. Of course the success of the Lyttelton Harbour Review could not be possible without the ongoing support and enthusiasm from the wider community. A big thank you goes out to everyone who sends information; is willing to be interviewed or lets us know what might be happening in the neighbourhood. The Lyttelton Harbour Review project would not be possible without you all.

If you have an event, topic, sport announcement, fundraiser or cause that you would like to share with the harbour community, then Wendy or Jenny-Lee would love to hear from you:

Wendy Everingham
Office: 328 9093
Mobile: 021 047 6144
Email: infocentre@lyttelton.net.nz
Content Deadline: 5pm Friday

Jenny-Lee Love
Email: lytteltonreview328@gmail.com

Subscribe to the Review:
Email either Wendy or Jenny-Lee with the words "Subscribe Me" in the subject line and the Lyttelton Harbour Review will be delivered to your inbox.

In 2015 the Lyttelton Harbour Review is going to be produced fortnightly. Any important information between times will be emailed as a Lyttel Broadcast.

Hard Copies of the Review, courtesy of PWA Griffin are available at:
Lyttelton Harbour Information Centre
Lyttelton Library
Lyttelton Top Club

Back Copies Available to Download:
www.lytteltonharbour.info

328
Design


PWA Griffin
OFFSET & DIGITAL PRINTERS

HEALTHY COOKING ON A BUDGET

A talk from
Helen and Mikaela
of the Nutrition Room

Lyttelton Community House
7 Dublin St

Tuesday 30th June 1pm

Contact Maureen 741 1427

You are welcome to join our
community lunch before the talk
let us know one week prior.



What's News at the Lyttelton Farmers Market?

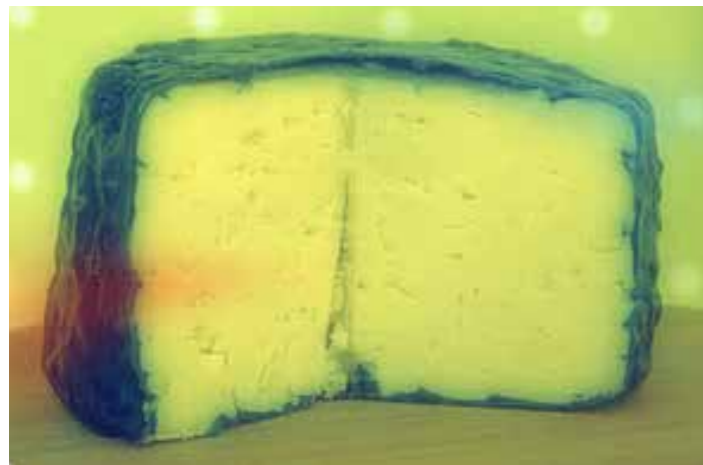
Welcome to Mount Grey Cheese

Beautiful and full-flavoured cheeses have arrived at the market. Our latest addition to the farmers

market is Mount Grey Cheese, and they sold out of stock on their first day!

They have brie and camembert, blue cheese, two varieties of washed rind cheese and a very tasty looking Yorkshire style cheese named "Mrs French."

All cheeses are available to taste before you buy. They are made in Rangiora.



Waste Matters stall at the market

A Waste Matters stall will be launched at the Matariki Market this weekend. The Waste Matters stall will sell products that enable people to reduce their use of food packaging (such as reusable cloth produce bags, reusable market bags, sandwich wraps, coffee cups, bokashi bins, the Hungry Bins worm farm). The stall will be run alternately by Helen Rupp and Annie Bermingham.

Hungry Bin Worm Farms

The Hungry Bin worms have been working hard at the market: 6kg of castings were recently collected from the bin for the community garden. If you have any vegetable or fruit scraps (no citrus or onion please) left over during



the market please feel free to feed the worms. The Hungry Bins can be ordered through PL (and delivered direct from Hungry Bins) and for every 10 we sell we will receive a Hungry Bin for use at the market.

Coffee Cup Library

Most of us want to do our best for the environment and the little things can make a difference. As the Waste Matters coordinator, Sarah Pritchett sorts out the waste from the Lyttelton Farmers Market every week. She also takes biodegradable packaging and food waste up to the Lyttelton Community Garden's worm farm. While sorting out the waste each Tuesday Sarah noticed that the majority of it is disposable coffee cups. So Sarah and the Waste Matters Advisory Group came up with the "Coffee Cup library". On Saturdays during the market the cups are stationed at UpShot Coffee's market stall in an old beer crate. There is an "empties" crate for used cups to be returned to. So now you can enjoy your takeaway coffee guilt-free from a real coffee cup. And someone else does the dishes.

Article Lucette Hindin Project Lyttelton

DISPOSABLE

CUPS

are 50

last

MILLENNIUM



Reusable coffee cups available from
Harbour Co-Op, Harris & Turner, Lyttelton Info Centre
and the Farmer's Market for \$15

www.lyttelton.net.nz



Waste
Matters

THE MILTONES

MILLY TABAK
VOCALS . RHYTHM GUITAR . HARMONICA
LIAM PRATT
LEAD GUITAR

HAILING FROM THE OUTSKIRTS OF AUCKLAND CITY, THE MILTONES ARE BACK WITH A VENGEANCE. ON THE BACK OF LAST YEARS DEBUT SINGLE, BLACK DAHLIA, THE MILTONES ARE BRINGING THEIR GRITTY FUSION OF BLUES, FOLK AND ALL MANNER OF DEBAUCHERY, TO A TOWN NEAR YOU. PROMOTING THE ANTICIPATED RELEASE OF THEIR UPCOMING, LIVE EP, THE MILTONES BRING A LIVE SHOW FILLED WITH A BLEND OF SWEET MELODIES, BEAUTIFUL STORIES AND ABSOLUTE CHAOS.

PLAYING MUSIC TOGETHER SINCE THEIR TEENS, BLOOD SWEAT AND TEARS ARE ALL COMPILED INTO THE CRAFT OF THEIR SONGS. HAVING PLAYED THE COVERS CIRCUIT AROUND AUCKLAND FROM AN EARLY AGE THROUGH TO PACKING OUT THE LEIGH SAWMILL WITH THEIR OWN STUNNING ORIGINALS. THIS IS A GROUP THAT HAVE FOLLOWED IN THE FOOTSTEPS OF THE LIKES OF BRUCE SPRINGSTEEN AND THE ROLLING STONES.

AFTER DEBUTING ON RADIO HAURAKIS MORNING SHOW AND FEATURING ON JUICE TV'S NZ OWN, THE MILTONES ARE A NEW ACT MAKING THEIR MARK IN THE NEW ZEALAND MUSIC INDUSTRY. NOW PLANNING TO SPAN THE COUNTRY AND DELIVER THEIR HEARTFELT, HARDWORKING AMERICANA, THE MILTONES SURE KNOW HOW TO ENTICE YOU INTO A FOOTSTOMPING FRENZY.

Events

TUESDAY JUNE 23RD

Fat Tony's Happy Hour	5-7pm
Wunderbar Open Mic Night Showcase	7.30pm
Lyttelton Club Bingo \$1 per card	6pm to late

WEDNESDAY JUNE 24TH

Fat Tony's Happy Hour	5-7pm
Porthole Bar A Night with a Future Star	8pm

THURSDAY JUNE 25TH

Civil and Naval Devlish Mary and the Holy Rollers	9pm
Fat Tony's Happy Hour	5-7pm
Porthole Bar Stomping Nick	8pm

FRIDAY JUNE 26TH

Fat Tony's Happy Hour Joker Jackpot Draw	5-7pm 6-7.30pm
Porthole Bar DJ Paco	7pm
Wunderbar Lads on Tour \$10 - A Backpacker's Cabaret	8pm

Please note Fat Tony's have now moved to winter hours.

*Monday – Tuesday 3.30pm - late
Wednesday – Sunday 11am - late*

SATURDAY JUNE 27TH

Civil and Naval Toque	9pm
Fat Tony's Happy Hour	5-7pm
Porthole Bar DJ Zac Reid	8.30pm
Wunderbar The Miltones	8.30pm

SUNDAY JUNE 28TH

Fat Tony's Happy Hour	5-7pm
Freemans Carmel Courtney and Friends	3.30pm
Porthole Bar Jam Session	3.30pm

LYTTELTON RUGBY CLUB.

Trainings for our Div 2 side are on a Tuesday and Thursday @ 6:15pm.
Rec grounds in Lyttelton or Hillsborough Domain.
(see club FB page for updated details).

Contact the club's Rugby Manager for all enquiries
nathan.mauger@gmail.com 021 1116069.

Community Activities in and around the Harbour this Week

MONDAY

Community Choir

7.30pm Union Chapel, Winchester Street, Lyttelton.
All welcome. Jillie 021 152 8068 \$10 | \$1

Lyttelton Youth Centre

3-7pm Drop in 10-20years
4-6.30pm Carving Course
7-9pm Boys Group 10-13
7 Dublin St Lyttelton 328 7427

Pilates Classes

6.15-7.10pm Level 1 and 2
7.15 -8.10pm Beginners Level 1
Naval Point Club
Contact: Jennifer Rice 027 204 1224

TUESDAY

Community House

Shared Lunch 12.00pm 7 Dublin Street
Make new friends

Lyttelton Health Qigong for Seniors

9.30am – 10.30am
Union Church, Winchester Street \$5
Geraldine Parkes 03 328 7284 or 027 644 4455

Lyttelton Library Storytimes

11.00-11.30am

Lyttelton Library Science Alive

3.30-4.30pm

Lyttelton St John Youth Division

6.00pm St John Ambulance Station
52 London St, Lyttelton

Lyttelton Youth Centre

2-8pm Drop In 10-20 years
7-9pm Girls Group 10-13 years
7 Dublin St Lyttelton 328 7427

St Josephs Worker Catholic Church

9am Mass 21 Exeter Street, Lyttelton
All Welcome More information call 384 1600

WEDNESDAY

Diamond Harbour Singers

7.30 - 9.00pm
Every Wednesday in Stage Room of Community Hall.
All welcome. Contact Margie 329 3331.

Lyttelton Cubs

6.30pm Contact Mark Brabyn 027 281 6180

Lyttelton Garage Sale

10.00am 25 Canterbury Street, Lyttelton
Second Hand Bargains and more.

Lyttelton Harbour Fruit and Vegetable Collective

Is trading again each Wednesday between 12.30pm
and 2.30pm at the Union Church in Winchester Street.
Contact Jill Larking for more info 027 237 4960

Lyttelton Library Wednesdays Knit and Yarn

10.00-12.00pm

Lyttelton Play Group

Lyttelton Playgroup
At Kidsfirst Lyttelton
12.30pm- 2.30pm
33 Winchester St Lyttelton
Call 03 328 8689 for more information

Lyttelton Youth Centre

3-6pm Underage Drop In 7-9 years
6-8pm Drop in
7 Dublin St Lyttelton 328 7427

Pilates Classes

9.45-10.40am
Naval Point Club
Contact: Jennifer Rice 027 204 1224

THURSDAY

Community House Flat Walking Group.

Contact Maureen Dellow-Jackson for more
information. 022 091 4034

Governors Bay Pre-School Music

9.15am Governors Bay School Library All Under 5s
Welcome with Adult | \$3.50

Governors Bay Volunteer Fire Brigade

7.00pm Governors Bay Fire Station
Weekly Training
New Members Welcome

Lyttelton Garage Sale

10.00am 25 Canterbury Street, Lyttelton
Second Hand Bargains and more.

Lyttelton Volunteer Fire Brigade

7.00pm Lyttelton Fire Station
Weekly Training
New Members Welcome

Lyttelton Youth Centre

2-7pm Drop In
7-9 Girls Group 10-13 years
7 Dublin St Lyttelton 328 7427

FRIDAY

Lyttelton Garage Sale

10.00am 25 Canterbury Street,
Lyttelton Second Hand Bargains and more.

Community Activities in and around the Harbour this Month

Lyttelton Library Fridays Babytimes

10.30-11.00am

Lyttelton Youth Centre

2-7pm Drop In
7-9 Girls Group 10-13 years
7 Dublin St Lyttelton 328 7427

SATURDAY

Lyttelton Farmers Market

10.00am London Street,
Lyttelton Fresh produce; Live Music; Buskers and
More

Lyttelton Garage Sale

10.00am 25 Canterbury Street, Lyttelton
Second Hand Bargains and more.

Lyttelton Harbour Bazaar Market

10.00am No 6 London St. Artists, Bric a Brac and More

SUNDAY

St Saviour's at Trinity

10.00am Winchester Street
All Welcome

Diamond Harbour Civil Defence

7.00pm Third Wednesday of the month.
Community Church Diamond Harbour
Contact: Wendy Coles 0211541434

Governors Bay Civil Defence

7.00pm Third Wednesday of the month.
Governors Bay Fire Station Contact
Contact: Ian Palmer 3299 160

Lyttelton Civil Defence

7.00pm Third Wednesday of the month.
Lyttelton Information Centre
Contact: Brenda Hurl 021 359 059

Lyttelton Menz Shed

Contact Christine 741 1423

Lyttelton Museum Historical Society

Contact Liza Rossie 021 211 0832

Lyttelton Lions

7.30pm Second Tuesday Each Month
Lyttelton Community House
Contact: Mary 03 328 8523

Lyttelton Mt Herbert Community Board

9.30am Third Wednesday Each Month
Meetings Open to the Public

Lyttelton Rugby Club

For details visit the club Facebook Page or contact the
club's Rugby Manager
Nathan.mauger@gmail.com 021 111 6069

Naval Point Old Salts Lunch

The Old Salts Lunch is being held on the 2nd Tuesday
of every 2nd month with the next one being held next
Tuesday, 10th February starting @ 12:00 with 2 course
lunch commencing @ 12:45.
Contact Barry Bowater 329 4828 or 0272743520

St Joseph the Worker R.C.Church

5.30pm Mass 3rd Sunday of the month. Parish House
21 Exeter Street Lyttelton.
For more information call 384 1600

AVAILABLE FOR RENT: LONG OR SHORT TERM**01 LYTTTELTON**

We have Insurance / Short Term Fully Furnished Accommodation available now in Lyttelton area.

Please contact Daniel at Rent Right Property Management Ltd on 03 377 4939 or 021 994 297.

02 LYTTTELTON

Studio/Flat Stevensons Steep: \$290 per week.

Self-contained studio/flat for rent. Separate and private. Has its own kitchen and bathroom. Washhouse facilities are shared.

Fully furnished. Queen Bed, sofa, kitchenware, microwave, bench Oven, fridge, dvd player.

It is warm, sunny and light with a view of the port and a sunny spot to sit outside in a nice garden.

Long term it would suit one person.

Short term it could suit one or a couple. Rates are negotiable for short term.

Short walk to the Lyttelton shopping area.

Off street parking.

Suit a clean and tidy person. No pets or smokers.

Long term: \$290 per week plus expenses. Available from 22/6/2015.

Phone Michelle (owner) 3288020 or 0274160625

03 LYTTTELTON

Studio/Apartment Gilmour Terrace: \$350 per week.

A spacious studio/apartment will be available on the East side of Lyttelton from 11.7.2015.

Extra features are incredible port hill and town views, a security system, walk in wardrobe and a bath as well as a shower.

It is sunny and has a commercial heat pump, as well as double glazing and insulation.

It is walking distance into the Lyttelton shopping area. It would suit a tidy professional single or couple.

Long term rent is \$350 per week unfurnished. Short term unfurnished or furnished would be negotiable.

Phone Michelle (owner) 3288020 or 0274160625.

04 LYTTTELTON

3 Bedroom House Gilmour Tce: \$490 per week.

Solid home with 3 large bedrooms, one bathroom and separate toilet. It is on the East side of Lyttelton.

Sunny and warm with two heat pumps, gas fire, double glazing and insulated. Furnished plus a security alarm.

Decor has warm neutral colours.

Large sunny deck. Incredible views. Beautiful garden.

It is walking distance into the Lyttelton shopping area.

Suit a couple or a family. No pets. No smokers.

The price does not include power or services. Linen optional extra. Available now.

Phone Michelle (owner) 0274160625

05 LYTTTELTON

Accommodation

2 bedroom fully furnished cottage in Lyttelton for short term rental in July and August 2015. Cozy with log-burner, fabulous view of harbour, animals welcome – fully fenced property. Non-smokers only. \$335.00 per week includes phone, firewood, broadband and wi-fi. Power extra. Phone 3287105 text 027 276 5992.

06 LYTTTELTON

Accommodation

3 bed home 10 years old Insulated/double glazed

Heat pump

Deck/views

Sheltered. Off street parking

Available long term. Phone Roy 027 444 3956

ROOM FOR RENT: FLATMATE WANTED**01 LYTTTELTON**

Professional non-smoking flatmate to share large warm and sunny 2 storey furnished heritage home with 1 other mature professional who is the owner. Own double bedroom with french doors opening onto a verandah, a new bathroom and a study overlooking the harbour. Share kitchen/living/dining. Lovely outdoor deck and garden. Handy to London St. House has heat pumps, a big logburner, plenty of space and wifi. \$225 a week plus expenses. Contact Liz on 0210677653 for more information

EQC ACCOMMODATION**01 LYTTTELTON**

Short Term Rental in Lyttelton. Fully furnished one and two bedroom apartments.

Call Kathy at Dockside 325 5707.

02 CORSAIR BAY

Accommodation/house fully furnished. Home looking out over Corsair Bay. Bus stop at the bottom of section. Four double bedroom, two living areas, two toilets and double garage with off street parking. No fences, but pets okay by negotiation. Fully furnished. \$900/wk (power not included). Phone connection. Broadband. Call Heather on 027 211 7205 for details.

03 LYTTTELTON

We have rental accommodation available in the Lyttelton area for Earthquake Repairs. Short or Long term, fully furnished, pets negotiable. Please phone Daniel on: 03 377 4939 or 021 994 297.

04 LYTTTELTON.

Lovely three bedroom character home, heat pump, log burner, drive on access, stunning views, pets OK \$600 per week. Negotiable. Phone 021 060 2316.

05 CASS BAY

Ideal stay during you EQC Repairs. Governors Bay Road, Cass Bay. \$200 a night. Four bedroom house with great views. Contact Claire 027 878 7867.

06 LYTTTELTON

"Wake up every morning with a view of the harbour, while enjoying peace and quiet away from the city. 43a Exeter Street is a beautiful, warm, historic cottage freshly painted & newly renovated.

This 2 bedroom private cottage is ideal for the family to relax in while your home is being repaired by EQC or on holiday in Christchurch.

Only a 15 minute drive away from the CBD this cottage is fully furnished with all the comforts of home, landline, sky TV and wifi

\$120 a night (pets negotiable).

contact Emma 0274987927

PLACES TO STAY

B&B Homestay CLOSED FOR WINTER 2 Coleridge Terrace	021 252 1256	Janetkennedynz@gmail.com Host: Janette
Cass Bay Retreat Governors Bay Road, Cass Bay	027 878 7867	cassbayretreat.co.nz
Diamond Harbour Lodge 51 Koromiko Crescent, Diamond Harbour	03 329 4005 021 103 7080	diamondharbourlodge.co.nz Host: Robyn and Pete
Dockside Apartment 22 Sumner Road, Lyttelton	03 328 5707 027 448 8133	dockside.co.nz Host: Grant and Kathy
Governors Bay Bed and Breakfast Governors Bay Road, Governors Bay	03 329 9727	gbbedandbreakfast.co.nz Host: Eva
Governors Bay Hotel 52 Main Road, Governors Bay	03 329 9433 021 611 820	governorsbayhotel.co.nz Host: Jeremy and Clare
Il Sogno Bed & Breakfast 58 Koromiko Crescent Church Bay	03 329 4227	ilsogno@snap.net.nz Host: Graeme and Angela
Little River Camping Ground 287 Okuti Valley, Little River	03 325 1014 021 611 820	littlerivercampground.co.nz Host: Marcus
Orton Bradley Park Camper Van Stay Marine Drive, Charteris Bay	03 329 4730	ortonbradley.co.nz Host: Ian

THINGS TO DO

Black Cat Cruises Quail Island Adventure B-Jetty, Lyttelton Wharf [Below Oxford Street]	03 328 9078 0800 436 574	blackcat.co.nz
Christchurch Gondola 10 Bridle path Road, Heathcote valley	03 384 0310	welcomeaboard.co.nz
International Antarctic Centre 38 Orchard Road, Christchurch Airport	0508 736 4846	iceberg.co.nz
Jack Tar Sailing Dampier Bay Marina, Lyttelton	03 389 9259 027 435 5239	jacktarsailing.co.nz Skipper: Mike Rossouw
Orton Bradley Park Marine Drive, Charteris Bay	03 329 4730	ortonbradley.co.nz

EAT, DRINK, DINE

Godley Cafe 2E Waipapa Avenue, Diamond Harbour	03 329 4800	godleyhouse.co.nz Meet: Michelle Anderton
Harris & Turner Delicatessen 8 London Street, Lyttelton	03 328 7358	Open Mon-Sat 10am to 6pm Meet: Andrew and Glenn
London Street Dairy 34 London Street, Lyttelton	03 328 9350	Open 7 Days 7.30am to 10pm Meet: Andrew and Glenn
Roots Restaurant 8 London Street, Lyttelton	03 328 7658	rootsrestaurant.co.nz Meet: Giulio and Christy

LOCAL EXPORTS

Blue Fusion Web Design and Business Development	03 328 8646 021 255 7403	bluefusion.co.nz Meet: Andy and Dana Dopleach
Lyttelsoft Specialising in Accounting Software	03 328 8671	lyttelsoft.co.nz Meet: Penny Mercer
Real Homes New Zealand Limited PO Box 94, Lyttelton	03 390 3393 021 224 6637	realhomes.co.nz Real Estate Agent: Lynnette Baird
Saunders & Co 1063 Ferry Road, Ferrymead	03 940 2435 022 133 6963	saunders.co.nz
Sullivan Stone Architectural Stonemason	027 665 078	sullivanstone.co.nz Stonemason: Brayden Sullivan

HEALTH, BEAUTY, FITNESS

Christchurch Yoga Scout Den, Charlotte Quay, Lyttelton	021 071 0336	christchurchyoga.co.nz Instructor: Rebecca Boot
Lyttel Beauty 32 Voelas Road, Lyttelton	03 328 7093 021 297 3885	lyttelbeauty.co.nz Meet: Emma