

LYTTELTON REVIEW

September 2015 • Issue: 151

PURAU • DIAMOND HARBOUR • CHURCH BAY • CHARTERIS BAY • GOVERNORS BAY • RAPAKI • CASS BAY • CORSAIR BAY • LYTTELTON



IN THIS EDITION:

- **Ode to the Cyclist**
- **Sumner Road Re-Opening Update**
- **Personalised Service, Lyttelton Style**

Hi

Thought it was time for me to put to my two cents worth in and have a little say.

Spring is upon us and what an absolutely wonderful place to live at this time of year. Looking forward to a stunning summer, well fingers crossed.

Our Face Book page has had a boost and been a great way to receive information and also to get information out in the community. (Lyttelton Harbour Information Centre or our web page <http://www.lytteltonharbour.info>)

The other big news is the Review is now in hard copy so for those that aren't online or computer savvy you can get a read, or like myself still enjoy reading text on paper.

We would love to hear any feed back and of course anything you would like to share. Especially any sport and school stories. Please feel free to submit any information big or small, events, best player, awards, fund raisers and/or what's on. Also any great scenic shots we can use for our cover.

There are a few topics readers have asked about, Time Ball Station Flag, Dog poo and Sumner Road opening. Do you have knowledge of these that you would like to contribute?

I would like to say a big thank you to ALL the people that put so much of their own time and energy into our community. Even Tony Murrell gave Lyttelton a big shout out on national radio last weekend, apparently he would love to live here due to the landscape and community spirit!

Enjoy the new blooming season
ed, Jenny-Lee Love

Diamond Harbour Reserves Committee

If you are interested in reserves within Diamond Harbour you could contribute by becoming a member of the Diamond Harbour Reserve Management Committee. A meeting to elect a Reserve Management Committee will be held on Thursday 3 September 2015 at Stoddart's Cottage, Waipapa Avenue, Diamond Harbour commencing at 6pm. For more information or questions, please contact Liz Beaven, Community Board Adviser, at 941 5602 or Liz.Beaven@ccc.govt.nz

Would you like to be a guide in the Banks Peninsula Walking Festival?

What is special about the Banks Peninsula Walking Festival? Many things spring to mind: First is the natural beauty, unique plants and wildlife, the amazing terrain, bays and weather of Banks Peninsula. Second is the amazing skills and knowledge of the guides who volunteer their time to lead a walk: from experts in geology, botany and history, to enthusiasts for the arts, home chicken-rearing and local cafes.

This year's festival will run over four weekends (7th - 29th November), and will offer many of the popular walks from previous years. We are also looking for new guides who have something special they'd like to share in the townships, rural areas or wilderness of the peninsula. Walks range from thirty minutes to overnight, and can take a specific place/track as their point of interest, or be modeled around any interest area (think geocaching, a cafe crawl or photography walk - the range is broad).

The festival is organised by Project Lyttelton, with support from the Rod Donald Banks Peninsula Trust, Akaroa District Promotions and the Wairewa/Little River Community Trust. If you would like to be involved, please contact Project Lyttelton's events co-ordinator Lucette Hindin at events@lyttelton.net.nz or 328 9243.

Matt Vance - Ocean Notorious - Little Ships Club News

Come along to our September Event & hear Lyttelton sailor Matt Vance talk about his new book Ocean Notorious.

"This book is for lovers of exciting non-fiction about remote and rarely visited places - and maritime adventures.

True first-person stories of the Southern Ocean from NZ to Antarctica - the windiest, roughest, most isolated body of water on earth.

The Southern Ocean is Earth's most notorious body of water. It circles Antarctica, acts as a violent mixer of wind and water, links all other oceans, is feared by sailors and explorers - and is mostly ignored by the rest of the world.

Human influence is minimal; the idea of settlement is absurd. There are only widely scattered outposts of people who have come ashore intentionally and temporarily - or have been shipwrecked or abandoned.

Matt is an intrepid sailor who has guided and spun stories on many southern ocean voyages to

Antarctica and subantarctic islands and led the Artists in Antarctica Programme."

Thursday 17 September from 7.30pm

Community Fundraising.

Express Fundraising Workshops for Christchurch

Would you like to have a reliable income for your organisation but are unsure where to start?

We can help.

For one last time we are bringing our **Sustainable Funding** and **Secret of Sponsorship** Workshops back to Christchurch, but this time we're offering some 'Express Sessions' so that you can fit them into your busy lives. The sessions are still packed with plenty of practical ideas and useful how-to tips, but they're delivered as fast-paced seminars so you can take what you need, and get back to work.

When: Wednesday 16th September
Where: Christchurch Community House,
 301 Tuam Street, Christchurch

Here's what's on offer:

Sustainable Funding, 10am - 12pm or 6pm - 8pm

Discover the 7 key income streams for charitable groups and uncover opportunities for raising more funds, more often. Learn simple tips and tricks for fundraising smarter and get more volunteers involved with your fundraising efforts. This session takes a quick look at a range of topics including donations, sponsorship, membership, grants and traditional fundraising activities.

Secret of Sponsorship, 1pm - 3pm

Discover what businesses are really looking for in a sponsorship relationship and learn how to approach them for the best chance of success. Identify potential sponsors for your organisation, learn how to properly value your package, and make sure your organisation is truly ready for the sponsorship journey. If you want to develop genuine business relationships, this session is for you.

Cost: \$50 per person / per session
To Register: Email tracey@exult.co.nz

Junior Sailing Naval Point News

The 2015-2016 Junior and Youth sailing programme developed by David Southwick and his team is locked and loaded for the coming season. If you have a grandson, granddaughter, niece, nephew, son or daughter who would like to Learn to Sail, develop confidence on the water, learn new life skills

and have lots of fun then please contact David to register your interest at juniorsailingnpcl@gmail.com

If you are seasoned Junior or Youth sailor then our club programmes provide options for you from adventure for those not so motivated to race, to our regular race coaching for those who aspire to regional, national and international success. Our coaches are all Yachting NZ certified and within the club our youth coaches have extensive competitive experience.

Please contact either David at juniorsailingnpcl@gmail.com or Ross at membership@navalpoint.co.nz. Please follow the link below to the Registration of Interest form and Junior and Youth programme <https://navalpoint.wordpress.com/2015/08/23/junior-sailing-2015-2016-season/>

Christchurch City Council's

new app.

SNAP - SEND - SOLVE

Christchurch residents can now report issues such as overflowing rubbish bins and pot holes instantly to the Council from their mobile phones.

Smartphone app, Snap Send Solve, allows people to take photos of council related issues and report them quickly and easily. All types of issues can be reported, including graffiti, blocked drains, fallen trees, broken playground equipment, and more.

The app allows photos, including GPS locations, to be submitted by email to the Council in 30 seconds.

The Council can add, remove, and edit relevant issue types quickly.

Snap Send Solve is free and can be downloaded from the Apple app store, or Android's Google Play.

You will need to visit

https://www.youtube.com/watch?v=v4G_11pW0Yg
 to see how Snap Send Solve works.

Graffiti Programme Team – Belinda, Val and Sarah have advocated for some time to have an app.

We can now proudly inform you that Christchurch City Council launched the app, Snap - Send - Solve during June.

You can easily capture and report issues including graffiti, rubbish, recycling, damaged roads and footpaths, parking issues, street cleaning, trees, noise and general requests or feedback.

Your reports will be instantly sent to our customer call centre for action. For further information or assistance on using the app please contact us on any of the following telephone numbers: 03 941 6632, 03 941 6655 or 03 941 6614.

Lyttelton Community Association AGM

The Lyttelton Community Association AGM will be held at 7pm on Wednesday 16 September 2015 at the Top Club, 23 Dublin Street. All welcome.

Lifeguard Training

http://www.cccjobs.co.nz/jobs/viewjob/130985/7136_-_Seasonal_Summer_Lifeguards

Are you energetic and enthusiastic? Do you have great customer service & enjoy taking initiative? If this sounds like you, we are looking for motivated individuals to join our team.

As a Summer Lifeguard you will ensure the delivery of a quality, safe and appropriate aquatic environment for our customers over this busy period. You will understand and deliver good customer service, have a sense of responsibility, be friendly and enthusiastic and work well in a team. This is an exciting time for the Christchurch City Council with more of our swimming pools opening for the summer season from November 2015 to March 2016.

We have opportunities available at all of our

- Outdoor pools (Te Hāpua Halswell, Norman Kirk Memorial Pool - Lyttelton, Waltham, Templeton)
- Indoor pools (Pioneer, Graham Condon, Jellie Park Recreation and Sport Centres), choose your local pool and make a difference to your community!

The successful candidates will be confident in the water, have great customer service, will have the flexibility to work at various locations if required and hold a current first aid certificate.

Lyttelton Library

An upgrade to the library and a new service centre will be merged together. A planned makeover begins in february next year. Unfortunately this means the library will be closed for atleast a year. In the meant ime the community board has been asked to find a temporary space for the public.

Marlon Willams

is a finalist in this years Silver Scroll awards. Now down to 20 nominees and altought Marlon is now living in Melbourne, we wish him all the best. Good luck.

Review Creators

Lyttelton Harbour Review is a 100% voluntary community newsletter initiative developed after the February 2011 earthquake. It's a Lyttelton Harbour Information Centre initiative produced by Chairperson Wendy Everingham and Committe Member Jenny-Lee Love.

The objective of the Lyttelton Harbour Review is to help keep local residents informed with what is going on in the wider Lyttelton Harbour community. Of course the success of the Lyttelton Harbour Review could not be possible without the ongoing support and enthusiasm from the wider community.

A big thank you goes out to everyone who sends information; is willing to be interviewed or lets us know what might be happening in the neighbourhood. The Lyttelton Harbour Review project would not be possible without you all.

If you have an event, topic, sport announcement, fundraiser or cause that you would like to share with the harbour community, then Wendy or Jenny-Lee would love to hear from you:

Wendy Everingham

Office: 328 9093

Mobile: 021 047 6144

Email: infocentre@lyttelton.net.nz

Content Deadline: 5pm Friday

Jenny-Lee Love

Email: lytteltonreview328@gmail.com

Subscribe to the Review:

Email either Wendy or Jenny-Lee with the words "Subscribe Me" in the subject line and the Lyttelton Harbour Review will be delivered to your inbox.

In 2015 the Lyttelton Harbour Review is going to be produced fortnightly. Any important information between times will be emailed as a Lyttel Broadcast.

Hard Copies of the Review are available at:

Lyttelton Harbour Information Centre

Lyttelton Library

Lyttelton Top Club

Back Copies Available to Download:

www.lytteltonharbour.info

LIFT Library Newsletter

Juliet Adams

New Books

Foreign Control Watchdog August 2015 This magazine is produced by CAFCA – Campaign Against Foreign Control of Aotearoa. The topic is hitting the headlines quite often these days, with overseas purchases of properties and businesses, and the TPPA situation. Every issue of this magazine lists several pages (15 in this one, January to March 2015) of details of Overseas Investment Office Decisions; farms, wineries, forests, buildings, holiday park, small businesses (Martin Jetpack), shopping Malls (Riccarton) etc.

This issue contains many really interesting articles, most written for ordinary readers with no special background. Several feature speeches at CAFCA's 40th anniversary event in May this year – Bill Rosenberg on 'Foreign Investment and the Economy'; Murray Horton on CAFCA's history; Warren Thomson on 'NZ's Role in the Corporate Intelligence Machine'; John Minto on 'National Begins NZ's Biggest Privatisation of State Assets' (state housing); Bryan Gould on 'Greek Lessons: look what happens when you relinquish sovereignty'; Catherine Delahunty on 'Hauraki/Coromandel Versus Gold Diggers Inc.'; Edward Miller on 'South African Investment Capital in NZ' (Postie Plus, Bidvest, Youi); Mary Ellen O'Connor on 'The Paradigm Shaft' (no, that's not a typo!) – the current Health and Safety fiasco being a prime example; reviews by Lyttelton's Jeremy Agar of new books; and two articles on the TPPA, one by Greg Rzesniowiecki, 'TPPA Local Government Campaign' explaining how all over NZ local councils (including Christchurch) have been responding to citizens' campaigns on the TPPA by signing up to the TPP policy solution that protects NZ's interests (try googling that).

It is expected that this nationwide action will influence the government, as did such action that made NZ nuclear-free. I have a batch of petition forms on declaring Christchurch a TPP Free Zone – It worked with the anti-nuclear movement – the government could not ignore both citizens and councils - help it to work now, by signing this petition – I'll have it at the Market on Saturday.

I have just downloaded an e-book, 'People Powered Money' from the New Economics Foundation, but haven't had time to read it yet. It sounds like a LIFT-style subject. It's free at -

<http://www.neweconomics.org/publications/entry/people-powered-money> Let me know what you think of it. I don't expect to have much spare time in the near future, with so much going on, especially with Timebank events!

Coming Events

- Monday August 31st:
Christchurch Progressive Network's September Forum – "Beating the Big End of Town" Anthony Main launches his book in ChCh. See the attachment.
- THIS IS BIG! Edgar Cahn's visit celebrating Lyttelton Timebank's 10th birthday 9.00am – 1.00pm Thursday 3 September. This is open to the public – if you're quick, you may still get in.
- Edgar Cahn will be at the Saturday Market, on Sept 5th, I believe, so you may see him there.
- LIFT'S FILM EVENING. Monday 7th September at The Portal 54A Oxford St. 7.15pm
- CLIMATE CHANGE. Are you warming up for the UN Climate Change Conference in Paris 30 Nov to 11 Dec?
Come and watch several short clips, with focus on NZ's agricultural/gardening situation. Discussions, brainstorming and solutions.
- If you are interested in the concept of sustainability, especially for Christchurch's development, and/or if you attended a workshop with Katja Brundiers in April, do look at this link from SOC – Sustainable Otautahi Christchurch. <http://www.sustainablechristchurch.org.nz/news/seeing-seizing-co-creating-the-green-pathway-in-christchurch/>



LPC Norwich Quay building demolition

The former LPC administration building on the corner of Norwich Quay and Dublin Street suffered structural damage in the 2010/2011 earthquakes and demolition will begin this month.

Our contractor Smith Crane and Construction aims to remove the building and resurface the area by early 2016.

Traffic management and secure fencing will surround the building and any asbestos will be removed before beginning demolition.

The contractor will use a large crawler crane to incrementally cut and crane out sections of the building from the roof to the second floor. From the second floor down, excavators and high reach nibblers will be used to complete demolition.

LPC will undertake measures to minimise disruption, noise and dust to the Lyttelton township during this project.

We are considering the future use of the site which may include maintenance facilities.

Our head office will be rebuilt on Port land near the Container Terminal. This will allow most staff to work from one building. We appreciate your patience during demolition.

For any enquiries, please contact LPC reception on 328 8198.

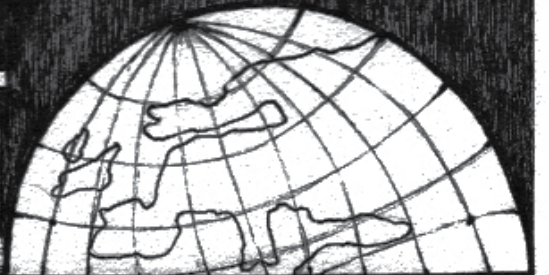
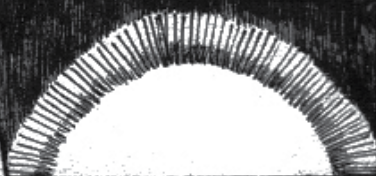
lpc Lyttelton
Port of
Christchurch

ODE *to the* CYCLIST

AND OTHER POEMS



ANDY
COYLE



ODE *to the* CYCLIST

Book Release 2015. Ode to the Cyclist and other poems by Andy Coyle Local performance poet and two time NZ Poetry Slam finalist Andy Coyle is finally captured in print by ground breaking independent publishing house, The Republic of Oma Rapeti Press.

Ode to the Cyclist and other poems is Andy Coyle's first published volume of poetry. The title poem celebrates the cyclist as a boundary crosser, a trickster, and the rest of the collection is full of those colourful characters who occupy the margins, the wandering poet, the lizard skinned junky, the urban shaman, the Christmas loner, the idealistic artist, the madman on the bus, the forgotten seaside destination, the voices on the wind, the long gone goddess, and the ghostly memories of an invisible city.

The Collection in wonderfully brought to life through the cover art of Anita Clarke.

Andy Coyle is a narrative poet who relishes the opportunity to take an audience on a journey. His poetry carries a warm lyricism with a great sense of spoken rhythm ensuring the journey is comfortable and memorable.

He performs regularly at live venues, with jazz and folk musicians, at street festivals, literary festivals, poetry slam, and solo poetry shows. He twice has represented Chch at the National Poetry Slam finals.

The content of the poetry can range from praising cyclists to meditations on the nature of creativity, from spirited calls for political awareness to genuine personal reflections. Coyle's work is deeply responsive to his surroundings, and as such places and faces that we are all familiar with are visible in every scene.

He has had a short story filmed, a play performed, and a poem painted as a mural in the seaside suburb of New Brighton

Ode to the Cyclist and other poems is available in a handful of independent shops, through the Republic of Oma Rapeti Press, the Catalyst Poetry Journal and Catalyst performance nights, or at Andy Coyle's live shows.

"The cyclist is a breath of fresh air in a world of pollution,
 a free flowing verse in a world of congestion...
 an endangered species
 a childhood memory
 a moment of faith
 a constant rhythm
 a secret song
 a flash of light,
 there and gone."

This book is available at the Lyttelton Information Centre 20 Oxford St Lyttelton.

Andy Coyle has been performing poetry in Christchurch for over 15 years. He first appeared onstage with 90's poetry and performance troupe 'The Militant Angels' at the infamous Green Room on Lichfield St in 1998.

While studying creative writing at Canterbury University Coyle penned a series of underground novels set in Christchurch. He published these independently and began to distribute the works by reading extracts in fringe festivals and in performance venues around the country. During this time Coyle performed his poetry and prose frequently and appeared with local groups the Davidson Collective, the Canterbury Poets Collective, and at art galleries and music venues.

Coyle held a forum discussion in the very first Christchurch Writers and Readers Festival to discuss the possibilities of independent and underground publishing in Christchurch. One of the more enthusiastic people present was Doc Drumheller who aspired to publish an independent literary Journal. Drumheller set up the Neo-ismist Press and began to publish the Catalyst Literary Journal with Ciaran Fox. Drumheller aimed to place emerging writers alongside established New Zealand writers, and overseas writers. Coyle became a regular contributor to the journal and the Catalyst performance nights and collaborative recordings.

Over a number of years Coyle performed improvised horror stories on full moon nights accompanied by improvised sound art, and free jazz. This series of performances culminated in 2006 with the epic performance poem 'Subreal Urban Myths', the poem attempted to reveal the violent subconscious Coyle imagined 'lived (or lives)' beneath the town's Cathedral Square. This poem was performed with a progressive jazz rock ensemble featuring members of Spartacus R, the Nudge, and Pyramid Scheme. The show appeared in Jazz and Fringe festivals around the country and at the Harbour Light Theatre in Lyttelton.

In 2010 Coyle teamed up with fellow poets Ben Brown and Helen Back to tour the country in a house bus. In later years this group expanded to include Ciaran Fox, Sarah Amazinnia, and Rebecca Nash and together the group perform their poetry in festivals around the country as the 'Lyttelton Poets'.

In both 2011 and 2014 Coyle won a place in the Christchurch Poetry Slam and travelled to Wellington to compete in the National Poetry Slam Finals.

In 2014 he co-wrote 'The Intimacy of Words', a poetry performance show with Sarah Amazinnia, mapping the course of a relationship entirely in the language of poetry. The show made its successful debut in the Christchurch Word Festival 2014.

2015 sees the long awaited release of Ode to the Cyclist and other poems with accompanying performances.

Article Andy Coyle

Sumner Road reopening

The Christchurch City Council is preparing for work to re-open the earthquake damaged Sumner Road between Lyttelton and the Summit Road near Evans Pass.

The road and retaining walls will be repaired and the risk to road users from geotechnical hazards will be reduced. The project is estimated to cost \$40-\$60 million and the construction phase will take about three years. The NZ Transport Agency is funding 83 per cent of the cost, recognising the importance of Sumner Road as a lifeline route and in getting freight to the Port of Lyttelton.

Background

Sumner Road provides an important link from Christchurch/Sumner to Lyttelton for the general public and for the Port of Lyttelton. Prior to the Canterbury earthquakes, the road served as an alternative route for port vehicles that were unable to use the Lyttelton Road Tunnel. It is also an alternative route in and out of Sumner and Lyttelton if their other routes were blocked. Users included over-sized vehicles, and those carrying specified hazardous substances.

Since the closure of the road due to risk of rockfall and significant damage to the road surface, those vehicles have accessed the port via Dyers Pass or Gebbies Pass. These are longer routes. Hazardous goods go through the tunnel, with night-time closures.

The road was also a popular link for cyclists and serves as alternative route to the port should an emergency (including a natural disaster) close the passes or the tunnel.

Key information

This is an 'Earthquake Recovery' Project. The works are required for the purpose of reopening the earthquake damaged Sumner Road. Christchurch City Council will keep Lyttelton, Sumner and Redcliffs communities and other stakeholders informed of any developments and updates throughout the project. Key stakeholders including local residents, Department of Conservation, Lyttelton Port Company and Te Hapū o Ngati Wheke and Te Ngāi Tūāhuriri Rūnanga have been consulted and involved in decision making on this project to date.

The proposed works

The area for the proposed work extends from approximately 100m from the Evans Pass layby down to Reserve Terrace in Lyttelton. It includes the Crater Rim Bluffs and the slopes below these, the Battery Point Bluffs, the road cuttings, the forested areas (Ururau and Buckleys Bay Reserves) and the gullies to the west of the Crater Rim Bluffs. After this work is completed the embankments and retaining walls below the road under the Crater Rim Bluffs will require repairs.

The proposed work varies depending on the specific area of the site, and includes scaling to remove loose surface materials; blasting to remove boulders and outcrops; and earthworks including engineered removal of soil and rock to reshape the land (to create benches). Bunds may also be required to contain any future rock fall.

There is also a proposal for the Council to undertake native restoration planting in the area (four hectares between Sumner Road and Old Sumner Road) which would contribute towards environmental mitigation for the project.

Minimal disturbance and disruption to the residents of Lyttelton Harbour and Sumner/Redcliffs areas is a priority.

The overall project will be undertaken in two phases as follows:

- Works above Sumner Road to reduce risks to road users.
- Road works by contractors to repair the road, including retaining walls and any necessary drainage.

The works will generally move from the higher parts of the site down toward the road and from western and eastern sides of the project site toward the centre. It is possible that some stages may occur simultaneously.

Anticipated Effects

The proposed project methodology has had rigorous professional and technical investigation and peer review by a multi-disciplinary team including planners, engineers, geologists, landscape architects, construction and operations consultants, and ecologists.



The team has considered potential effects during construction and in the long term. These include disruption to plant and wildlife; erosion; stormwater runoff; nuisance, noise and dust effects; landscape impacts; impacts on walkers and mountain bikers using the Crater Rim paths and many more. The project team has developed strategies for avoiding, remedying and mitigating these effects. Conservation work includes native restoration planting and gecko translocation.

Lizards

Native lizards (skinks and geckos) live in many places on the Port Hills/Banks Peninsula area. Five different types of lizards live in the Port Hills/Banks Peninsula area. There are two gecko species (Canterbury Gecko and Jewelled Gecko) and three skink species (Central Canterbury Spotted Skink, Common Skink and McCann's Skink). The Council is working with the Department of Conservation to reduce the impact on lizards and their habitats from the work needed to fix earthquake damaged sites and reduce the risk of rockfall on the Port Hills.



Rockfall remediation work and lizard protection

Rockfall risk remediation takes place to ensure peoples' safety and to prevent damage to the road below. It is a process to reduce or remove the risk of future rockfall and is carried out by experts.

The work to reopen Sumner Road between Evans Pass and Lyttelton requires major rock fall risk remediation work to stabilise the Crater Rim Bluffs and adjacent rocky areas.

Rockfall risk remediation affects lizards living in the area. Some lizards face permanent habitat loss, injury or death, although the Council has looked to reduce the impact as far as we can. Work on the Sumner-Lyttelton road will have the most effect on the Canterbury Gecko because it lives in the rocky Crater Rim bluffs.



The amount of rock removed from the area will be kept to a minimum and we will try to avoid key habitats, for example the areas where Canterbury Geckos live communally. Before work starts, as many lizards as possible have been captured from accessible areas and released in safe areas. Skinks have been released in suitable tussock grassland nearby. Canterbury Geckos have been caught and released at Riccarton Bush to start a new population there. Riccarton Bush has 7.8 hectares of forest surrounded by a state-of-the-art fence that keeps out predators (mice, rats and cats).

The geckos have been caught by specially-trained rope access technicians working with a herpetologist (a person who specialises in working with reptiles and amphibians). Some have been caught in live traps and some caught by hand once rocks are removed. Some geckos have also been gently coaxed out of their crevices.

We will not return them to the Port Hills site because they will no longer have the vital resources on which they depend, including deep, narrow rock cracks that keep them safe from predators and readily available food sources (plant berries and insects).

Project Timeline

It is expected that the proposed work will start in late 2015 and the road potentially open towards the end of 2017 or early 2018.

Updates and more information

Ahead of any work, works notices will be issued to communities in the surrounding areas, emailed to e-newsletter subscribers and put up on this page.

If you would like to receive email updates on the project, please email your name and address details to slcorridor@ccc.govt.nz with the subject header 'Slcorridor updates'.

We will also be keeping community and residents' groups in your area informed of any developments on the project, and paper copies of any updates will be available to take home from the Lyttelton Service Centre (15 London Street, Lyttelton) and The Sumner Hub (57 Nayland Street, Sumner).



Personalised Service, Lyttelton Style

As is typical in Lyttelton people are tucked away doing their businesses and most of us are oblivious to what they are doing Monday to Friday. Long term resident Robin Stringer

is one of those quiet achievers. Robin and his wife Jane moved to Lyttelton in 1990. They were drawn to the township for the peace and quiet. Tired of the noise and smoggy nights in Christchurch this was the place for them and they have been here ever since.

Both of them have a back ground in the printing industry. Robin like many of us got tired of working for a corporate. An opportunity popped up eighteen years ago to become self employed. There were several franchises available in a group called Im-Press Promotions. At that time 42 franchises were sold throughout the country. As the years have gone by the franchises have been sold and now there are only two businesses left. Robin's in the South Island and another person up in the North Island

The niche that Robin has carved out centres around providing promotional products for community groups, corporations etc. How it works is he has a range of products that you choose to have your personal logos or advertising slogans printed on. Products include clothing, gifts, conference materials etc.

Several Lyttelton groups have benefited from Robin's work over the years. The Lyttelton Farmers Market bags have all been sourced from Im-Press Promotions. The market team provided the logo, Robin sourced the bags and then arranged the logo to be printed on the product and then bingo the market has personalised bags. Similarly the new logos for Community House

come from his office. The Information Centre has sourced cards and souvenirs' from him, as have some of the sporting teams. Tee shirts and hats also come to mind as the various festival and events have sought to brand themselves.

This business has been run successfully from home for the last eighteen years. In between times Robin has also stepped up to help a few community groups in the town. Around 2003 he was the Chair of the Business Association. It was under his watch that the Festival of Lights got off the ground. He remembers that fondly. "Our main aim was to show that Lyttelton was a happening and alive place while we had all the fans from the Lions Rugby Tour moored on cruiseships in the harbour" he said. "We definitely achieved that and it's great to see the festival full of life ten years later".

He also was a key player on the Board of the Information Centre. For many years his business experience helped guide the board under the direction of Captain John Cleaver. These days he takes a more low key approach. Like many of us he's managing his business whilst dealing with the endless earthquake build issues that come our way. He hopes in the next few months that will all be behind him and life can return to a form similar to the past. He reminisces about popping down the hill to the Empire.....

Im-Press Promotions
<http://www.im-press.co.nz/>
 Ph 328 7541



Article Lyttelton Information Centre

Friday 4 September 2015
The 5th Anniversary
 Mayor Lianne Dalziel invites you to join her at New Brighton beach from 6.10am on Friday 4 September to watch the sun rise. This is a time to gather as a community, to remember the journey and the losses of the past five years since September 2010, and to look to the future.

We will gather on the beach in front of the New Brighton Library from 6.10am, where there will be a short ceremony. It will begin to get light from just after six and sunrise will be approximately 6.50am. The ceremony will end once we

have all watched the sun rise together (given a clear day). Parking is recommended in the car park north of the New Brighton Library (on the left of the Library if you are facing the sea). Walk back towards

the Library past the play area. Just before the Library, veer left down to the beach and follow the temporary lighting to the gathering point just beyond the Pier.

Christchurch City Council



CHRISTCHURCH 360 TRAIL

The Christchurch 360 Trail Committee would like to warmly invite you to the opening of the new 135 kilometre trail that circles Christchurch on Saturday October 3rd at 11 am at Wetlands Grove, Bexley.

The idea of a trail began 25 years ago with Dr Colin Meurk, an ecologist, who over many years offered guided botanical walks around the city's outskirts.

The purpose of these walks was educational, to encourage people to learn about the native biodiversity within the city's boundaries, and through knowledge treasure it and work for its preservation while enjoying the recreational benefits. Linking existing routes the Christchurch 360 Trail forms a walking/running track that circles Christchurch.

The Trail showcases and interprets the rich array of natural, landscape, seascape and cultural features of the city that have previously been hidden.

Divided into 8 sections, of approximately 17 kilometres each, the Christchurch 360 Trail provides a unique,

single or multi-day experience, with ever-changing beach, sea, estuary, river, hill, bush and city views.

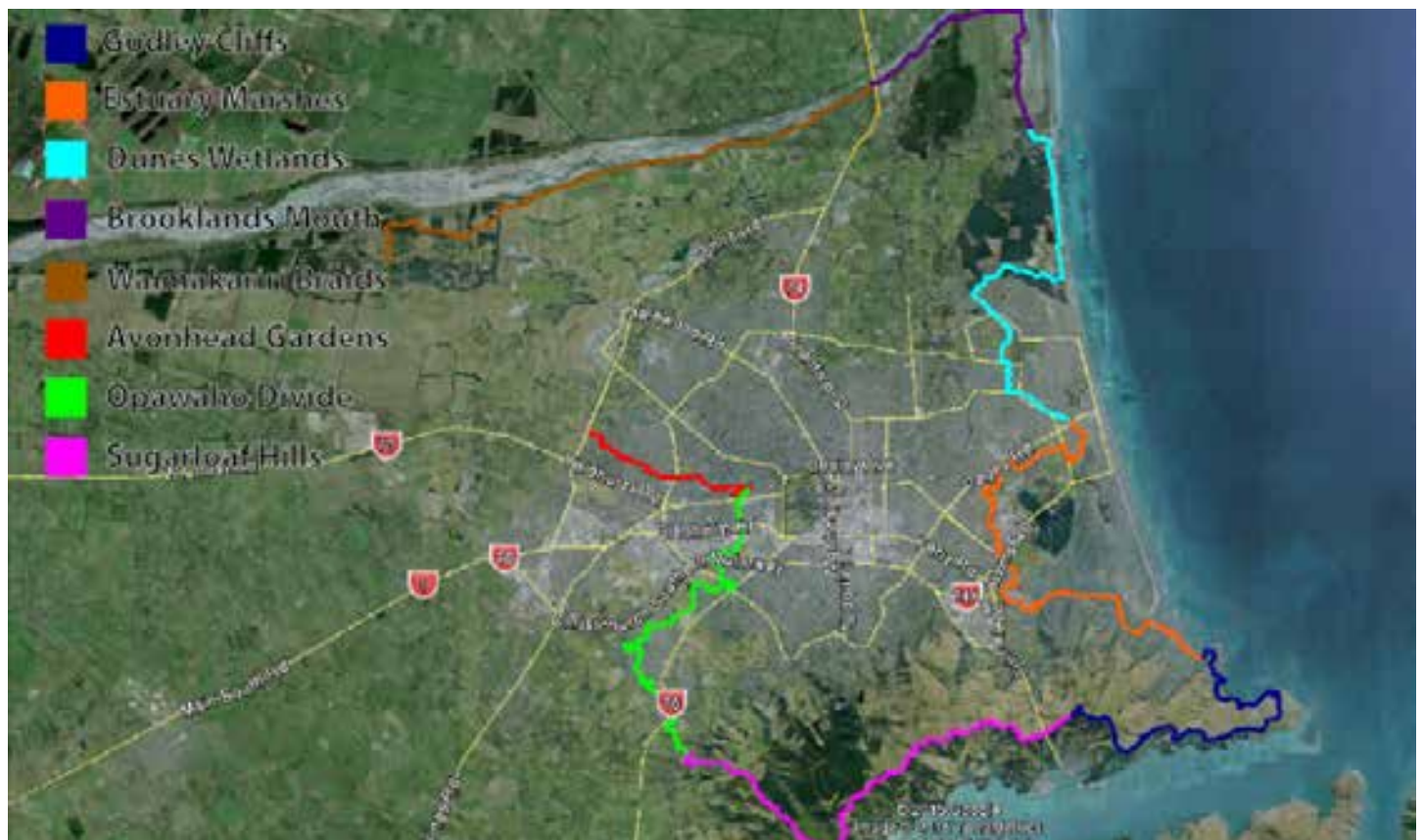
For a number of years a dedicated group of volunteers have been working on making this track become a reality through developing a website <http://christchurch360trail.org.nz/>, logo, route guides and interpretation panels with the support of CCC, DOC and some funding and time from Rotary. Dialogue has begun with Ngāi Tūāhuriri Rūnanga and we look forward to an ongoing partnership there.

We are launching CHCH360 Trail as part of the The Breeze Walking Festival and invite you to join us, after the formalities, in walking the first kilometre of the trail along the Avon.

Dr Colin Meurk is setting off with us to walk (over 8 days), the entire 135 km trail finishing at the same spot on Saturday October 10th.

The next day Sunday 4th October, three other segments of The Trail will be simultaneously walked: Godley Head to Sumner; Sign of the Kiwi to Halswell Quarry; Travis Wetland to Spencer Park. Each will end with a BBQ provided by Rotary in three different locations at the end of trail segments. Details of this are on our website and bookings are essential.

We hope you are able to join us in celebrating this exciting new trail and the culmination of years of work - please let us know if you are able to do so





Lots of people emailed us to say they would still like to help the Loons, so if you're one of those fantastic people, here's the low down. You can help the Loons fit out their new theatre in four ways.

Become a seed donor

Crowdfunding campaigns are more successful if they start with a bang and that means having money in the pot when the campaign goes live. So if you'd like to donate some money on 21 September and get the ball rolling, we want to hear from you. Contact Kate and she'll tell you more. Call: 021 343 544
Email: projects@theloons.co.nz

Become a Loons Supporter

If you're in a position to really get this party cranking, we wish to acknowledge you in a special way. If your donation is \$1,000 or more, we would like to, with your permission, put your name, or another name of your choice, on the back of a new seat in our theatre. If you are able to give \$500, we'll make you an official Friend of the Loons. Contact Kate at projects@theloons.co.nz for more info.

Pledge your support in public

If you love the Loons, tell the world why you're supporting the Loons' new theatre. You can even make a short video if you feel like it!

Post your message of support for the Loons on your Facebook page tag @TheLoons and share on our Facebook page

Tweet your message @LoonsTheatre using #LoonsTheatre or #BeggingForIt

Email your message to Kate at projects@theloons.co.nz. Write us a letter. We love getting post! The Loons, 2a Cornwall Road, Lyttelton.

Spread the word

Tell your Mum. Tell your mates. Tell your colleagues. Once we start fundraising we only have 40 days to raise the money, and if we don't make \$70,000 we don't get a single cent. We're begging for it, and we can't make it happen without your help!

To find out more about the Loons new theatre space, visit our website.



Circles and Cycles.

By John Riminton

Diamond Harbour Writers Group

Andrew was having fun. Inspired by the sight of a beautiful halo around the moon earlier in the week he had started “going into” the question of haloes and circles – the so-called perfect form in nature.

Andrew was a somewhat solitary 35 year old bachelor who quite frequently got carried away by similar projects. He had recently got hooked on Restorative Justice and there had been plenty others before that. He knew, of course, that the circles seen around the sun and moon were caused by light refracted through high altitude ice crystals but it had occurred to him that the phenomenon was much older than the human race and to primitive minds might have been seen as portents. That had set him off – what would the early minds have made of it?

In the brilliantly clear, uncontaminated air of early times, the circles would only have been seen around the Sun and the Moon. His researches soon showed that the Sun was one of the earliest things to be worshipped and placated in many societies so a halo around it, and the Moon, so linked to the female cycle, must have significance. Was it the Sun’s way of establishing its Divinity? Delving in the library for details of later attitudes, he was really intrigued to find that from the Middle to the Far East, gods, in their various manifestations were almost always imaged with a halo either around or behind their heads while Christianity had always marked its saints with haloes. This seemingly linear descent from the Sun to holiness was an exciting insight for Andrew who had never come across it before.

This led him on to the difference between circles and cycles. Some cycles were obviously circular – the lunar cycle, the water cycle of evaporation from the sea to rain to return to the sea. Probably the greatest cycle imagined by men before the birth of cosmology, was that of the Hindu Yugas, four epochs each lasting a kalpa or period of 10,000 divine years. There was some disagreement as to how long a divine year lasts, whatever, it was a helluva long time. The epochs were said to be the Yuga of Truth or Gold, the most perfect, represented by a bull standing on four legs of Virtue and lasting 4,000 divine years, Silver as evil makes its presence known and the bull is on three legs for 3000 divine years, Bronze, more deterioration with the bull on two legs, 2000 divine years, and Iron, our epoch where evil predominates with only one leg of virtue, lasting 1000. Each epoch ends with a global catastrophe that lasts Brahma’s night before the cycle resumes by eventually reverting to Truth. How did those periods relate to modern paleontology? Andrew couldn’t find much about that but was intrigued to discover that the latest Hindu dating places the end of the Iron, Kali Yuga in 2025 C.E.! He was amused that the apocalyptic media hadn’t latched on to that one, as they had the much-hyped End of the Mayan Calendar in, what was it – 2012? probably chastened by that non-event. Andrew was also fascinated to read one version that said that a divine year equalled 432,000 earthly years which made the beginning of the Kali Yuga roughly commensurate with the evolution of Homo sapiens. Not bad for people who knew nothing of evolution when the Vedas were being written about 1,000 B.C.!

Enough of that for the time being, no point in trying to become an expert - what next? Maybe “climate change” despite the publicity that it was currently getting – or “obesity”? So many options.

Plastic Bag Free Lyttelton

STOP!

Do you really need that plastic shopping bag?

Some facts might help you make your decision:

- The manufacture and transport of plastic shopping bags contributes to climate change, as both use petroleum, emitting CO2.
- Each year the world consumes between 500 billion and 1 trillion plastic shopping bags.
- New Zealand consumes around 1.6 billion plastic shopping bags annually.
- On average a plastic shopping bag is used for a mere twelve minutes before being disposed of.
- Most plastic shopping bags go into landfill where they may take up to a thousand years to break down, but many land up in the waterways and in our oceans.
- Scientists estimate that every square mile of ocean contains up to 46,000 pieces of plastic.
- Marine birds and fish ingest plastic, and get wrapped in it, causing sickness, starvation and death. Many of our ocean species are already endangered.

Can't Live Without them?

Before the 1980s we did, and everything was just fine. We used our own bags, baskets, cheesecloth and paper.

Lyttelton Solutions

Lyttelton Farmers’ Market – Shopping bags for sale at the Waste Matters stall as well as many other reusable packaging ideas and a reusable bag library at the Information Stall.

Lyttelton Harbour Co-op Rubbish Whisperer fruit and vegetable bags and a variety of shopping bags for sale.

Lyttelton Supervalu – BYO Bag library at entrance, Supervalu reusable bags for sale, and Rubbish Whisperer produce bags for sale for you to put your fruit and vegetables in.

Henry Trading – String bags of varied sizes for sale.

Workshops – Bag making workshops coming up. Dates TBA.

For more information: Ask to join our fb page – Plastic Shopping Bag Free Lyttelton, and get involved, contact Waste Matters on wastematters@lyttelton.net.nz or phone Juliet Neill on 021 032 7014.

French Country Style

By Michelle Parkes

Bonjour. Hello. Here we go
With a style we love and we all know
French Country and Shabby Chic
That is the theme all this week

Influenced by Rural Provence
This style gives us all the chance
To indulge our whims, live our dreams
Of rustic cottages with flaking beams

This unpretentious country design
Has un-embellished graceful lines
Filtered light through curtains of lace
Life is slowed to a peaceful pace

With azure skies and Van Gogh colours
The hues of Provence diverse as flowers
Provençal blues and reds and greens
Old and faded to pleasing schemes

Russet and ochre of stone and clay
Yellow of sunflowers and the gold sun on hay
Swathes of lavender and poppies of red
Greens of olive and cypress trees wed

Plus cream and ivory, a medley of whites
Soft taupe and naturals all add light
Starched cottons and linen and fine-spun wool
With whitewashed walls feel clean and cool

Nostalgic furniture fulfills a fantasy
Of the rustic, handmade, unpainted and free
Derelict, mismatched and almost wrecked
But polished to a weathered patina effect

More opulent furniture, still simple and chic
With harmonious lines, sedate shapes that seek
Relaxation and comfort, a soothing embrace
Add rhythm and softness to your special place

Luxurious furniture of pastel baroque
A curvaceous bath in which to soak
Oversize beds where plump cushions rest
On much laundered linen in a quilted nest
Fabrics cross-stitched, crocheted and crafts
Weaving and textures designed to last
Gorgeous curtains, covers and throws
Skins, feathers, furs and embroidered pillows

Natural hessian, sackcloth and silks
Unbleached linen the colour of milk
Chenille and chintz and waffles and jute
Soft gauzy muslins, romantic and cute.

Curtains are created in whimsical wraps
Voluminous, gathered with large overlaps
Not only on windows, but pleated pelmets too
Curtained cabinets, chairs and ruffles in the loo

Curtain fabrics are old, once they were grand
In soft shiny sateens, velvets, brocades and..
They have dots and stripes, paisley and plain
Ginghams and checks, the French florals are famed

Fusty and feminine florals invade
Wallpapers, blinds and even lampshades
Vases of flowers, floral tablecloths too
Real ones are fragrant and bunched for you

Multiple mirrors with gilt-edged frames
Distressed and worn from years of truth-telling games
Invite a feeling of glamour that is jaded
Grace your armoire even though it is faded

Collections of this, montages of that
Glass rainbow bottles, wicker baskets, straw hats
Everyday paraphernalia such as ancient books
Silver and porcelain and brass coat hooks

Now au revoir to our friendly house
Shutter the windows and chase out the mouse
Through dear door dented with worn out hinges
From a life of open and shut, and door play binges

A mismatched exterior - rubbed wood and chipped paint
Re-purposed chairs catch the sun and look quaint
The wildflowers are crazy and overflowing from pots
A humble wooden seat is happy with his plot.





the Garage Sale

SEPTEMBER 2015

Even though it's winter the Garage Sale still bustles with people. Thank you Lyttelton Harbour Community for continuing to support this great community initiative.

We appreciate your donations and your purchases.

For the month of July \$4526.80 was fundraised:

The following groups benefited:

Lyttelton Primary School Camp	\$470
Lyttelton Timebank	\$325.10
Under 12 Rugby	\$417
Anglican Parish	\$230
Sprig	\$160
Rotten Radio	\$160
Diamond Harbour Scouts	\$364
Inkind donations to organisations and individuals	\$50
Garage Sale Team	\$2350
<i>This pays for staff wages, dump fees and the balance supports other Project Lyttelton activities</i>	

If you would like to book a community garage sale please contact Sue-Ellen Sandilands 328 9243. The wider community can book on the 1st and 3rd Wednesday of the month from 10-4pm and the 2nd and 4th Saturday of the month from 10-1pm. To run the sale all you need is your own team of volunteers (preferably 3-4 people) and the proceeds are yours less a small administration fee. We are always seeking volunteers. If you would like to help please pop in and register with Claire or Teresa.



ITS OUR BIRTHDAY AND YOU ARE INVITED



Saturday 5th September is the Lyttelton Farmers Market's 10th birthday.

Dress in your party clothes, do some disco dancing, have a bounce on the bouncy castle, buy amazing food, listen to Latin music and while the morning away with a coffee and some delicious baking at our big tenth birthday bash. You might also want to enter the birthday cake baking competition - details below...



Birthday Cake Baking Competition

**We're hoping that
YOU will bake our
birthday cake.**

Prizes for the best cakes include a She Chocolate kitchen tour and chocolate making class and two massage prizes from The Soul Spa. Judging will be on presentation and taste and the cakes will be cut for all to enjoy. Present your entry to the information stall by 10:30am for judging at 10:45am.

Article Lyttelton Farmers Market



a passion for the Port Hills

Newsletter, Winter 2015



There's every reason in the world to take a walk on the Port Hills in winter with landscapes like this....

From the Secretary

It seems such a short time since I was working on the last newsletter, but here we are in the depths of winter 2015. Weather has been a mixed bag so far, with some fantastic and even barmy autumn days, (an 'Indian summer' or 'climate change autumn'??), traditional cold winter nights followed by glorious sunny Canterbury days, with of course, southerlies, rain and snow thrown in. After very dry conditions earlier in the year there has hopefully been enough rain to give all involved a good planting season on the Port Hills.

A lot has been happening since the summer, so this newsletter is more in the nature of news items rather than longer articles. The Board, work party convenors and your Secretary are having trouble keeping up. What is encouraging is that there seems to be a growing interest in planting, weed control and animal pest control, with more and more contact via our website. Improving the website and entering the world of social media is a work in progress.



Arbor Day

This year's Arbor Day plantings were scheduled for Wednesday 3rd June, but for the first time for many years we had to postpone due to the weather, and given the forecast for the following week were on the verge of cancelling. However, all three schools were keen to go ahead, so we took a chance on the weather being kinder on Tuesday 9th. In the event, the day was mild and still and students from Cashmere, Halswell, Te Waka Unua Schools, joined by a small group of parents and students from St Martins School successfully planted over 400 trees on Latters Spur, adding to the hundreds planted in previous years.

It is now easy to picture a whole hillside of native trees planted by children. Once again the Society would like to thank Di Carter and the Port Hills Rangers, the Eastenders who prepared the site and our volunteers who were there on the day for making the occasion a success.



NZ Society of Authors Heritage Week Writing Competition

Heritage Book of the Year

THEME — NEW ZEALAND HERITAGE
BOOK MUST BE PUBLISHED BETWEEN 1 SEPTEMBER 2013 AND 20 SEPTEMBER 2015
ENTRY FEE \$35, PRIZE \$1,000

Short form categories

- SHORT STORY (MAXIMUM 1,800 WORDS)
- NON FICTION ESSAY (MAXIMUM 1,800 WORDS)
 - POEM (MAXIMUM 50 LINES)

THEME FOR ABOVE THREE CATEGORIES —
(NEW ZEALAND) ARRIVALS AND DEPARTURES: THE JOURNEYS THAT HAVE SHAPED US
ENTRY FEE FOR SHORT-FORM CATEGORIES \$15 (EACH ENTRY)
PRIZE FOR EACH SHORT-FORM CATEGORY \$400

YOU MAY ENTER MORE THAN ONE CATEGORY AND/OR MORE THAN ONE ENTRY IN EACH
CATEGORY BUT YOU MUST PAY A SEPARATE FEE FOR EACH ENTRY.

Entries close Sunday 20 September 2015

FOR MORE INFORMATION SEE
WWW.HERITAGEWEEK2015.BLOGSPOT.COM

Winners Event
SATURDAY 17 OCTOBER,
4PM–6PM
SOUTH LIBRARY BOARDROOM
FINALISTS WILL READ THEIR
WORK AND WINNERS WILL BE
ANNOUNCED.
REFRESHMENTS AND
NIBBLES PROVIDED.


Beca
HERITAGE
Week
— CHRISTCHURCH —



Harbour Co-op News

We've just said good bye to the last Full Moon of Winter and now it's Spring!!! We want to celebrate by offering a 10% OFF discount on some our best Detox Products for Member Specials this month.

Pop down and check them out.

These specials will run from the 1st – 30th September.

Also we are still hiring! We're looking for a shop/ financial manager to join our team. Come by the shop to pick up a job description or we can email you one directly. Applications close Monday 7th September.

All the best from all of us at the Harbour Co-op! x



Join us for a morning with the founder of Timebanking

Professor Edgar Cahn

**at The Atrium
Christchurch Netball Centre
455 Hagley Avenue Christchurch**

**9.00am – 1.00pm
Thursday 3 September 2015**

Professor Cahn is in the country for the 10th anniversary celebration of New Zealand's first Timebank – The Lyttelton Harbour Timebank.

Professor Edgar Cahn will introduce and deepen your understanding of Timebanking and its role in strengthening the social sector. His talk will be followed by a Q&A session. Guests are welcome to stay for just the talk or join Professor Cahn in the second part of this event which will be an Open Space¹ workshop exploring how Timebanks can be used to enhance our region.

This event is for anyone keen to explore new ways of partnering, solving issues and getting people involved including:

- Local authorities (elected members and staff)
- Not-for-profit organisations
- Health agencies
- Disaster management
- Schools
- Government departments
- Community groups
- Any others interested

Discover how Timebanks can enrich your area of work.

Please Register with Lee.harper@ccc.govt.nz by Friday 28th August
Please indicate talk only or talk and workshop

Tea & coffee will be provided

This event is being supported by Project Lyttelton and Christchurch City Council.





KEEP NEW ZEALAND BEAUTIFUL

KEEP

14-20 SEPTEMBER

NEW ZEALAND BEAUTIFUL WEEK!

LAST YEAR OVER 40,000 EVERYDAY KIWI'S GOT AMONGST IT AND HELPED MAKE NEW ZEALAND A LITTLE BIT MORE BEAUTIFUL!

JOIN YOUR LOCAL COMMUNITY CLEAN UP

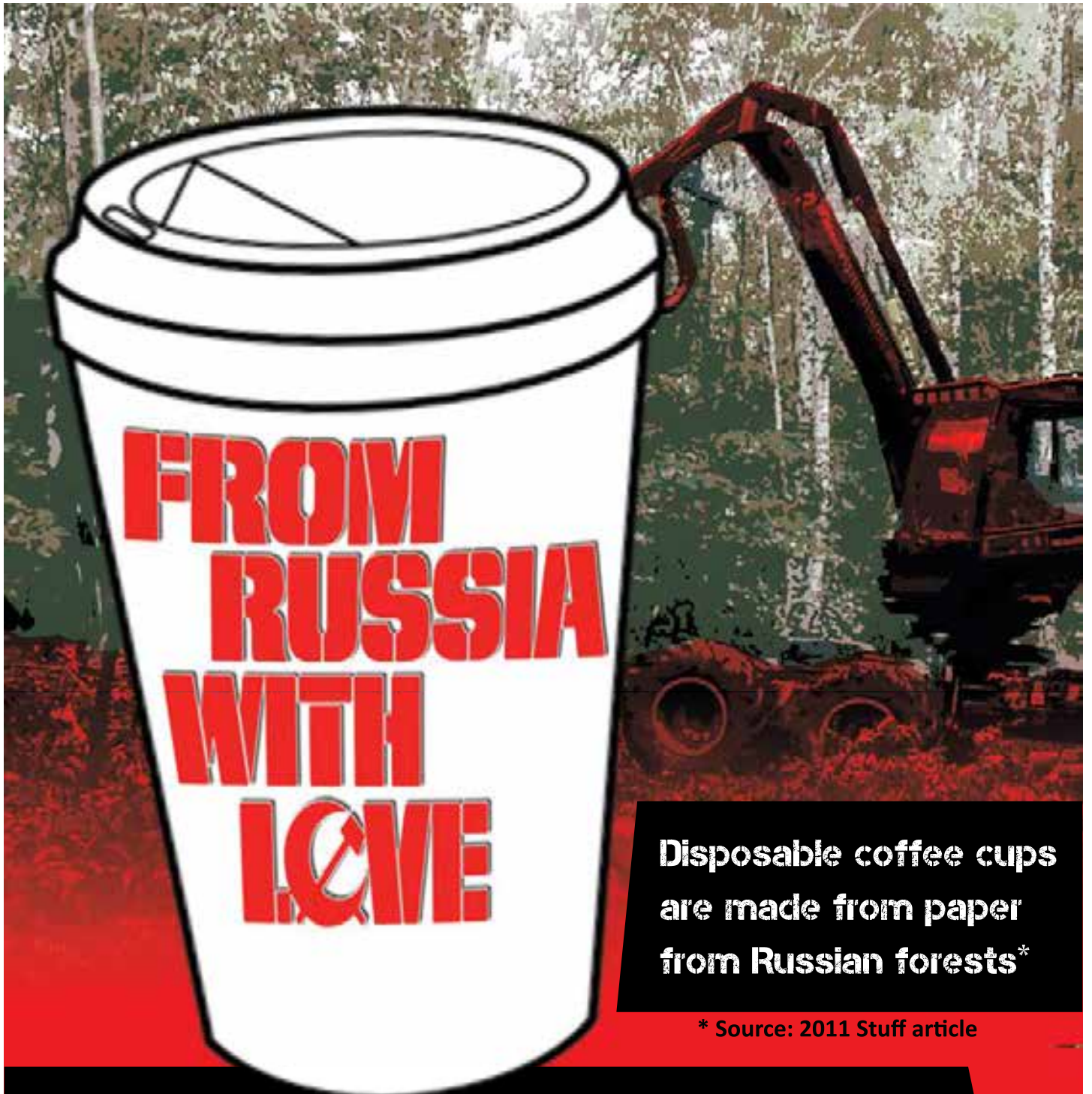
WHERE: Magazine Bay, Corsair, Cass + Ra paki

DATE: Sun 20th Sep TIME: 10am

MEETING POINT: at any of the above beaches

CONTACT: Sarah 329 3394 / 021 08254 606

OR REGISTER ONLINE TO JOIN THIS EVENT AT www.knzb.org.nz



**Disposable coffee cups
are made from paper
from Russian forests***

*** Source: 2011 Stuff article**

**Our Love Lyttelton cups are made right here in
Aotearoa by the award winning Ideal Cups team.**

**Reusable coffee cups available from Harbour Co-Op,
Harris & Turner, Lyttelton Info Centre
and the Farmer's Market for \$15**



www.lyttelton.net.nz





Titahi Bay v Lyttelton Rugby Club U12s 50 Year Anniversary Celebration September 11-13, 2015



Your Details

Name	
Address	
Town City	
Telephone	
Email	
Year/s Played	

Event Selection

		Fee	No.
Friday 7.00pm	Lyttelton Top Club, 23 Dublin Street Registrations Opens Opportunity to Meet, Mingle and Catch Up Official Welcome and Speeches Invited Guests, Past and Present Players Light Finger Food Supper Available	\$15.00	
Saturday 11.00am	Lyttelton Recreation Grounds, Godley Quay Titahi Bay v Lyttelton	FREE	
Saturday 6.00pm	Lyttelton Top Club, 23 Dublin Street Dinner Spit Roast Two Courses	\$40.00	
Saturday 8.00pm	Lyttelton Top Club, 23 Dublin Street MC Jim Hopkins Live Band Music and Dance	\$10.00	
	Memorabilia Jersey - Size/s:	\$50.00	
Please Calculate and Write the Total Due Here:			

Check List

Registration Closes Monday 31 August 2015

Registration Form Completed and Returned

Post To: Lyttelton Rugby Club Reunion, PO Box 168, Lyttelton 8841

Scan and Email To: reunionblueyellow@gmail.com

Registration Paid All Payments are Non Refundable


NOTE: For Catering and Security Reasons, Late or On the Day Registrations Will Not Be Accepted
All Registrations Will be Confirmed. Please Contact Us If Your Registration is Not Confirmed.

PLEASE Ensure Payment is Made Before Monday 31 August 2015:

Cheque Made Out To: Lyttelton Rugby Club Incorporated

Direct Debit Account: BNZ 02 0864 0004391 000 Reference Code 5456 +Your Name

New Zealand Shake Out™



DROP, COVER, HOLD ● National earthquake drill ● 9:15am, 15 October 2015 ● www.shakeout.govt.nz

New Zealand ShakeOut is a national earthquake drill taking place at 9:15am, 15 October 2015. Participating is a great way for you, your family or flatmates to learn the right actions to take before, during and after an earthquake.

Individuals, families & households

ShakeOut - it's as easy as 1,2,3...

1. **Sign up now** at www.shakeout.govt.nz. You can register everyone in your household and it only takes two minutes. The website will have lots of tips and information for doing the drill and being prepared.
2. **Spread the word** (tell family, friends and workmates, share on Facebook, Twitter etc.).
3. **Do the Drop, Cover and Hold drill** at 9:15am, 15 October 2015*. Refer to the other side of this flyer to learn the right action to take during an earthquake - Drop, Cover and Hold.

* If you cannot do the drill at 9:15am, 15 October 2015, you can choose a time to suit you within two weeks of the drill (and still be counted).

Get prepared

Once you've signed up:

- Learn more about the earthquake (and tsunami) risk in your area and other parts of New Zealand at www.shakeout.govt.nz/whyparticipate.
- Visit www.getthru.govt.nz to find out how to:
 1. Create a household emergency plan.
 2. Assemble or update your emergency survival items in case you have to shelter at home.
 3. Assemble or update your getaway kit in case you have to leave in a hurry.
 4. Identify safe places within your home, school or workplace.
 5. Secure heavy items of furniture to the floor or wall. Visit www.eqc.govt.nz to find out how to quake-safe your home.

Tips on sharing the ShakeOut

- You can sign up as an individual or as part of a family/household, school/preschool, business/workplace or other organisation/group.
- If you work outside the home, share the ShakeOut with your employer and encourage them to get your workplace signed up.
- If you're part of a group, such as a church, sports or youth group, look at doing the drill together, you can sign up the whole group at www.shakeout.govt.nz
- Download and print off flyers and posters to distribute at your work, organisation or neighbourhood (www.shakeout.govt.nz/resources).
- Download ShakeOut factsheets for individuals, families and households, schools and preschools, businesses and workplaces, and other organisations (www.shakeout.govt.nz/resources).



Find out more

For more information about earthquake preparedness in your area, contact the civil defence office at your local council. For more information about New Zealand ShakeOut, visit the website www.shakeout.govt.nz or email shakeout@dpmc.govt.nz

PARK(*ing*) Day[®]

Ōtautahi/Christchurch 18 September 2015



What is it?

It's your chance to transform a small spot in the city from a parking space to an active public space for the day and be part of an annual global event.

Why get involved?

To re-think the way we use our streets, and to re-imagine and improve our urban landscape and quality of life for the people in our city.

When?

PARK(ing) Day 18 September 2015 (– it's always the third Friday in September). It could be for the day, an hour or two over lunchtime or before or after work.

Where?

We are going to be focusing our PARK(ing) Day in and around Gap Filler HQ and The Commons. But really you could do your own PARK(ing) Day anywhere you can pay for parking. By purchasing a parking ticket you entering into a rental agreement to use that space.

Who?

Are you a business with street frontage? A charitable trust with a cause? A creative person who would like to express themselves on the street? Anyone can get involved in PARK(ing) Day.

What does it cost?

Your time, creativity, energy and the cost of a parking ticket for however long you would like to be there.

So what do I need to do?

1. Find yourself a space...

Chose your space: Talk to the local businesses, are they supportive? Can you partner with someone? Visit it at different times of the day and check out your potential audience.

2. Build a team

Ask your friends and neighbours to help plan, build, populate the site, and disassemble your parklet.

Boating Courses



Day Skipper, Boatmaster, Maritime VHF Radio Operator – Naval Pt Yacht Club, Lyttleton

Extend your boating knowledge with these comprehensive courses.

Boatmaster

- 12th Sept to 20th Sept – 9:00am to 5:00pm (2 x weekends)

Maritime VHF Radio Operator

- 18th Oct – 9:00am to 4:30pm
- 6th Dec – 9:00am to 4:30pm

Day Skipper

- 21st Nov to 22nd Nov – 9:00am to 5:00pm



BOOK ONLINE

www.boatingeducation.org.nz

CONTACT

Coastguard Boating Education
0800 40 80 90
bookings@boatingeducation.org.nz

Boating
EDUCATION



25 August 2015

Work notice update: St Davids Street, Lyttelton, retaining wall repairs

What	Retaining wall repairs
Where	St Davids Street
When	July to December 2015

Where:



Update:

From Wednesday 2 September we will begin repairs on the southern end of retaining wall 1 (the end closest to Sumner Road). This work involves installing a temporary shotcrete (spray-on concrete) layer to then install 16 soil nails.

In order to do this work the upper part of Sumner Road (access to 17-43 Sumner Road) will need to be closed during the day from 8am - 5pm for around two weeks. Please move any vehicles you may need between 8am - 5pm outside of the road closure.

During this time when parking is limited for residents we will be making more parking available on Sumner Road by decreasing the size of our Sumner Road stage 4 worksite. Vehicle access will be available to properties overnight.

After installing the soil nails in this section we need to install wire mesh, drainage, a final shotcrete layer, and then pour concrete. Closing the upper part of Sumner Road (17-43) may be required at times during this part of the work. We will update you closer to the time.



Email: info@scirt.co.nz
www.strongerchristchurch.govt.nz
 Follow us on Twitter @SCIRT_info



Christchurch
City Council

Programme funded by



New Zealand Government



10-27 SEPTEMBER, 2015

OPENING

9 SEPTEMBER

Wednesday 5:30pm

EXHIBITION

10-27 SEPTEMBER

Thursday/Friday 12-4pm

Saturday/Sunday 10am-4pm

- Bridget Allen
- Michael Armstrong
- Karen Baker
- Grant Banbury
- Simon Beyer
- Graham Bennett
- Jenny Braithwaite
- Jane Downes
- Deanna Gracie
- Gill Hay
- Bill Hammond
- Julia Holden
- Trent Hlies
- Icarus
- Lorelei Jenner
- Jen Kenix
- Maria Lee
- Jeremy Leeming
- Cheryl Lucas
- Elizabeth McKelvey
- Kate McRae
- Tatyanna Meharry
- Victoria Moore
- Julia Morison
- Flavie Pons
- Jan Priestley
- Gaby Reade
- Catherine Salmon
- Mark Soltero
- Ellie Spiewack
- Rachel Thornton
- Rob Upritchard
- Sue Upritchard
- Bianca van Rangelrooy
- Dean Venrooy
- Robyn Webster
- Racheal Western
- Jane Whales



TIN PALACE 13a Oxford St
 Lyttelton
 www.tinpalace.co.nz f: Tin Palace Lyttelton harbour arts collective

Lyttelton Information and Resource Centre

Chair's Annual Report August 2015

2014/15 has been a year of consolidation for the Information Centre. It's the first time since the earthquakes that we have been in a steady rhythm. We've hardly had a crisis and with more of our volunteers stepping up to help out, the work load has really been shared around more evenly. I believe we have become a real team. The organisation is more balanced and can operate easily when some members of the team are away.

It's been wonderful to have two new board members. Anne Parkinson and Jenny-Lee Love have been terrific additions to our team. Thank you to both of you and especially for taking on significant tasks within the organisation. It's great to have Ann's administration skills being used in the Trust's Secretarial role. Jenny-Lee has ensured the Lyttelton Review continues. It's been a very seamless transition for her to take over Lynnette's former role of creating the Review.

During the year we have only said farewell to one person Lynnette Baird but have welcomed one more volunteer Margie Dickinson from Diamond Harbour. I spend very little time on the front desk now. Previously I would have trained up all the new volunteers, this time round Karen Colyer stepped up and has not only trained Margie but the two of them have updated all the visitor information on the front desk.

It has also been lovely seeing community people continuing to visit the Information Centre. There is the group from Community House who pop in regularly, then all the Timebankers who are in and out, members of the Lyttelton Reserve Management Committee, Grubb Cottage Trust, the local civil defence team, the arts community and many people from the Fruit and Vegetable Collective. This project has introduced us to yet another new section of the Lyttelton community.

To make things go smoothly some financial security also helps. For the first time in many years our main funding stream is secure. A major milestone has been getting our in line funding included into the Council's LTCCP for the next ten years. This has been achieved. Thank you to board members Andrew Turner and Ann Jolliffe for your roles in enabling that to happen and to Nicky Sarson for the time and effort she spends

making sure the accounts are all up to date and all the financials are done.

As always it's time to thank our generous supporters who enable our operation to flourish. The Christchurch City Council is our major funder closely followed by the Canterbury Community Trust and the Community Organisation Grants Scheme from the DIA. Our paid up members are also very appreciated.

The real success of the Information Centre however is all of you. With your passion, commitment and love for Lyttelton Harbour we all are part of the whole that enable the 14,000 odd visitors who come in our front door to have a positive experience of our place.

Wendy Everingham Chair
Lyttelton Information and Resource Centre Trust August 27th 2015

WORLD PREMIERE

Trapped
by Joe Bennett

THE LOONN CIRCUS THEATRE COMPANY
NEW ZEALAND

In the town of Bessers England they used to trap ducks in netting tunnels. The mouth of a tunnel would be wide and tall and ducks would swim happily into it feeling no sense of threat. But as the tunnel went on it turned round corners and became lower and narrower. The ducks paddled on until they turned a final corner and found themselves in a little netted enclosure where a duck-salmon sat patiently waiting.

In *Trapped* written by Christchurch's Joe Bennett, a woman, a husband's daughter and a contractor tell the stories of their lives. They do not know each other and the unique and random details of what happened to each of them have only one thing in common.

WHEN
Thursday 3 - Friday 4 September
8:30pm

WHERE
Theater Concerts and Festival Studio
at The Arts Centre

TICKETS
\$15 / Door \$30

BOOKING
03444 62 62
0800 73 82798 (042 534)

DIRECTION
Amanda Hill

SPONSORED BY
sheffield
ARTS CENTRE

AVAILABLE FOR RENT: LONG OR SHORT TERM

01 LYTTTELTON

Self-contained studio/flat for rent. Separate and private. Has its own kitchen and bathroom. Washhouse facilities are shared. Fully furnished. Queen Bed, sofa, kitchenware, microwave, bench Oven, fridge, dvd player. It is warm, sunny and light with a view of the port and a sunny spot to sit outside in a nice garden. Long term it would suit one person. Short term it could suit one or a couple. Rates are negotiable for short term. Short walk to the Lyttelton shopping area. Off street parking. Suit a clean and tidy person. No pets or smokers.

Long term: \$290 per week plus expenses.

Available from 22/6/2015.

Phone Michelle (owner) 3288020 or 0274160625

02 LYTTTELTON

Studio/Apartment Gilmour Terrace: \$350 per week.

A spacious studio/apartment will be available on the East side of Lyttelton from 11.7.2015.

Extra features are incredible port hill and town views, a security system, walk in wardrobe and a bath as well as a shower.

It is sunny and has a commercial heat pump, as well as double glazing and insulation.

It is walking distance into the Lyttelton shopping area. It would suit a tidy professional single or couple.

Long term rent is \$350 per week unfurnished. Short term unfurnished or furnished would be negotiable.

Phone Michelle (owner) 3288020 or 0274160625.

ROOM FOR RENT: FLATMATE WANTED

01 LYTTTELTON

Room with own lounge. Very warm with a great view. Off street park. Share with one owner and must like animals. Suit professional, clean and tidy person.

Available at \$180p.w. includes expenses.

Contact 328 775 or 021 251 7839.

02 TEDDINGTON

Two single en-suite rooms available at \$200p.w. Power, firewood, water and broadband \$30p.w.

Beautiful and warm 2 storey log house with wonderful harbour views on a sunny Teddington farm. Has garden space. Long term preferred. Ph 3299118 See www.bergli.is-great.net

EQC ACCOMMODATION

01 LYTTTELTON

Short Term Rental in Lyttelton. Fully furnished one and two bedroom apartments.

Call Kathy at Dockside 325 5707.

02 CORSAIR BAY

Accommodation/house fully furnished. Home looking out over Corsair Bay. Bus stop at the bottom of section. Four double bedroom, two living areas, two toilets and double garage with off street parking. No fences, but pets okay by negotiation. Fully furnished. \$900/wk (power not included). Phone connection. Broadband. Call Heather on 027 211 7205 for details.

03 LYTTTELTON

We have rental accommodation available in the Lyttelton area for Earthquake Repairs. Short or Long term, fully furnished, pets negotiable. Please phone Daniel on: 03 377 4939 or 021 994 297.

04 LYTTTELTON.

Lovely three bedroom character home, heat pump, log burner, drive on access, stunning views, pets OK \$600 per week. Negotiable. Phone 021 060 2316.

05 CASS BAY

Ideal stay during you EQC Repairs. Governors Bay Road, Cass Bay. \$200 a night. Four bedroom house with great views. Contact Claire 027 878 7867.

06 LYTTTELTON

"Wake up every morning with a view of the harbour, while enjoying peace and quiet away from the city. 43a Exeter Street is a beautiful, warm, historic cottage freshly painted & newly renovated.

This 2 bedroom private cottage is ideal for the family to relax in while your home is being repaired by EQC or on holiday in Christchurch.

Only a 15 minute drive away from the CBD this cottage is fully furnished with all the comforts of home, landline, sky TV and wifi

\$120 a night (pets negotiable).

contact Emma 0274987927

ACCOMMODATION WANTED

Lyttelton: Wanted to Rent

Elder long term Lyttelton couple are desperately seeking accommodation for a minimum of twelve months while their house on Canterbury Street is rebuilt. Due to age related challenges they require an easy to access, single level property with minimum two bedrooms, garage and easy parking [on street okay]. Must stay within Lyttelton township. Smokers, outside only and will commercially clean property on vacating. No pets. Maximum budget \$400 per week. If you can help please contact Lynnette Baird 328 7707 or mobile 021 224 6637.

Events

TUESDAY SEPTEMBER 1ST

- Fat Tony's**
Happy Hour 5-7pm
- Lyttelton Club**
Housie is back \$1 per card 7pm
- Wunderbar**
Artist Showcase and
Open Mic Night 7.30pm

WEDNESDAY SEPTEMBER 2ND

- Fat Tony's**
Happy Hour 5-7pm
- Porthole Bar**
Jason, Busking 8pm
- Wunderbar**
Al Park and Friends 8pm

THURSDAY SEPTEMBER 3RD

- Civil and Naval**
Devlish Mary and the Holy Rollers 9pm
- Fat Tony's**
Happy Hour 5-7pm
- Porthole Bar**
Scoundels – Jimmy Taylor

FRIDAY SEPTEMBER 4TH

- Fat Tony's**
Happy Hour 5-7pm
Joker Jackpot Draw 6-7.30pm
- Lyttelton Club**
Timebank 10th Birthday 6.30pm
- Porthole Bar**
Suns on Sunday 7pm
- Wunderbar**
Triple One Man Band L'll Chuck
with MC Stomping Nick. \$15 9pm

SATURDAY SEPTEMBER 5TH

- Fat Tony's**
Happy Hour 5-7pm
- Porthole Bar**
DJ

SUNDAY SEPTEMBER 7TH

- Fat Tony's**
Happy Hour 5-7pm
- Freemans**
Carmel Courtney and Friends 3.30pm
- Porthole Bar**
Jam Session 3.30pm

EXHIBITIONS:

SEPTEMBER 9

The Great Harbour Basin: Tin Palace

Opening 9th September 5.30pm Exhibition 10-27
September 13a Oxford St Lyttelton

SEPTEMBER 26

Timepiece: Lytel Gallery

As part of the Timebank birthday celebrations *Timepiece: An Exhibition* is on at the Lyttel Gallery (Lyttelton Information Centre) for the month of September. 12 Timebankers have made clocks and these will be on sale via a silent auction that concludes on Saturday the 26th September with a grand closing night from 7-9pm where clocks sold will be taken home.

ENVIRONMENTAL

SUNDAY SEPTEMBER 6TH

Ohinetahi Reserve – Summit Road Society Planting Day

Anne Kennedy and the team would be delighted if members and supporters would join them for this year's winter plantings at the reserve, followed by a barbecue. This is a great opportunity not only to lend a hand but also to see the results of all the hard work that the team has put in over the years and the way that the native flora and fauna is returning. **Meet 1.00pm at the reserve next to the fire station on Ernest Adams Drive BYO spades please**

SATURDAY SEPTEMBER 19TH

Ohinetahi Reserve – Summit Road Society Planting Day

As part of Keep New Zealand Beautiful week help clean up beaches on Diamond Harbour side of harbour from 10am. Contact wastematters@lyttelton.net.nz to get involved.

SUNDAY SEPTEMBER 20TH

As part of Keep New Zealand Beautiful week help clean up beaches on Lyttelton side of harbour from 10am. Contact wastematters@lyttelton.net.nz to get involved.

Community Activities in and around the Harbour this Week

MONDAY

Community Choir

7.30pm Union Chapel, Winchester Street, Lyttelton.
All welcome. Jillie 021 152 8068

Lyttelton Youth Centre

3-7pm Drop in 10-20years
4-6.30pm Carving Course
7-9pm Boys Group 10-13
7 Dublin St Lyttelton 328 7427

Pilates Classes

6.15-7.10pm Level 1 and 2
7.15 -8.10pm Beginners Level 1
Naval Point Club
Contact: Jennifer Rice 027 204 1224

Lyttelton Harbour Fruit and Vegetable Collective

Is trading again each Wednesday between 12.30pm and 2.30pm at the Union Church in Winchester Street.
Contact Jill Larking for more info 027 237 4960

Lyttelton Library Wednesdays Knit and Yarn

10.00-12.00pm

Lyttelton Play Group

Lyttelton Playgroup
At Kidsfirst Lyttelton
12,30pm- 2.30pm
33 Winchester St Lyttelton
Call 03 328 8689 for more information

Lyttelton Youth Centre

3-6pm Underage Drop In 7-9 years
6-8pm Drop in
7 Dublin St Lyttelton 328 7427

Pilates Classes

9.45-10.40am
Naval Point Club
Contact: Jennifer Rice 027 204 1224

TUESDAY

Community House

Shared Lunch 12.00pm 7 Dublin Street
Make new friends

Lyttelton Health Qigong for Seniors

9.30am – 10.30am
Union Church, Winchester Street \$5
Geraldine Parkes 03 328 7284 or 027 644 4455

Lyttelton Library Storytimes

11.00-11.30am

Lyttelton Library Science Alive

3.30-4.30pm

Lyttelton St John Youth Division

6.00pm St John Ambulance Station
52 London St, Lyttelton

Lyttelton Youth Centre

2-8pm Drop In 10-20 years
7-9pm Girls Group 10-13 years
7 Dublin St Lyttelton 328 7427

St Josephs Worker Catholic Church

9am Mass 21 Exeter Street, Lyttelton
All Welcome More information call 384 1600

THURSDAY

Community House Flat Walking Group.

Contact Maureen Dellow-Jackson for more information. 022 091 4034

Governors Bay Pre-School Music

9.15am Governors Bay School Library All Under 5s
Welcome with Adult | \$3.50

Governors Bay Volunteer Fire Brigade

7.00pm Governors Bay Fire Station
Weekly Training
New Members Welcome

Lyttelton Garage Sale

11.00am 25 Canterbury Street, Lyttelton
Second Hand Bargains and more.

Lyttelton Volunteer Fire Brigade

7.00pm Lyttelton Fire Station
Weekly Training
New Members Welcome

Lyttelton Youth Centre

2-7pm Drop In
7-9 Girls Group 10-13 years
7 Dublin St Lyttelton 328 7427

WEDNESDAY

Diamond Harbour Singers

7.30 - 9.00pm
Every Wednesday in Stage Room of Community Hall.
All welcome. Contact Margie 329 3331.

Lyttelton Cubs

6.30pm Contact Mark Brabyn 027 281 6180

Lyttelton Garage Sale

11.00am 25 Canterbury Street, Lyttelton
Second Hand Bargains and more.

FRIDAY

Lyttelton Garage Sale

11.00am 25 Canterbury Street,
Lyttelton Second Hand Bargains and more.

Community Activities in and around the Harbour this Month

Lyttelton Library Fridays Babytimes

10.30-11.00am

Lyttelton Youth Centre

2-7pm Drop In

7-9 Girls Group 10-13 years

7 Dublin St Lyttelton 328 7427

SATURDAY

Lyttelton Farmers Market

10.00am London Street,

Lyttelton Fresh produce; Live Music; Buskers and More

Lyttelton Garage Sale

10.00am 25 Canterbury Street, Lyttelton

Second Hand Bargains and more.

Lyttelton Harbour Bazaar Market

10.00am No 6 London St. Artists, Bric a Brac and More

SUNDAY

St Saviour's at Holy Trinity

17 Winchester Street

10.00am Service with Holy Communion

2nd Sunday of every month only

Port Hills Uniting Church Service

10am Sunday Worship

All Welcome

Diamond Harbour Civil Defence

7.00pm Third Wednesday of the month.

Community Church Diamond Harbour

Contact: Wendy Coles 0211541434

Governors Bay Civil Defence

7.00pm Third Wednesday of the month.

Governors Bay Fire Station Contact

Contact: Ian Palmer 3299 160

Lyttelton Civil Defence

7.00pm Third Wednesday of the month.

Lyttelton Information Centre

Contact: Brenda Hurl 021 359 059

Lyttelton Menz Shed

Contact Christine 741 1427

Lyttelton Museum Historical Society

Contact Liza Rossie 021 211 0832

Lyttelton Lions

7.30pm Second Tuesday Each Month

Lyttelton Community House

Contact: Mary 03 328 8523

Lyttelton Mt Herbert Community Board

9.30am Third Wednesday Each Month

Meetings Open to the Public

Lyttelton Rugby Club

For details visit the club Facebook Page or contact the club's Rugby Manager

Nathan.mauger@gmail.com 021 111 6069

Naval Point Old Salts Lunch

The Old Salts Lunch is being held on the 2nd Tuesday of every 2nd month with the next one being held next Tuesday, 10th February starting @ 12:00 with 2 course lunch commencing @ 12:45.

Contact Barry Bowater 329 4828 or 0272743520

St Joseph the Worker R.C.Church

5.30pm Mass 3rd Sunday of the month. Parish House
21 Exeter Street Lyttelton.

For more information call 384 1600

PLACES TO STAY

B&B Homestay CLOSED FOR WINTER

2 Coleridge Terrace

021 252 1256

Janetkennedynz@gmail.com

Host: Janette

Cass Bay Retreat

Governors Bay Road, Cass Bay

027 878 7867

cassbayretreat.co.nz

Diamond Harbour Lodge

51 Koromiko Crescent, Diamond Harbour

03 329 4005

021 103 7080

diamondharbourlodge.co.nz

Host: Robyn and Pete

Dockside Apartment

22 Sumner Road, Lyttelton

03 328 5707

027 448 8133

dockside.co.nz

Host: Grant and Kathy

Governors Bay Bed and Breakfast

Governors Bay Road, Governors Bay

03 329 9727

gbbedandbreakfast.co.nz

Host: Eva

Governors Bay Hotel

52 Main Road, Governors Bay

03 329 9433

021 611 820

governorsbayhotel.co.nz

Host: Jeremy and Clare

Il Sogno Bed & Breakfast

58 Koromiko Crescent Church Bay

03 329 4227

ilsogno@snap.net.nz

Host: Graeme and Angela

Little River Camping Ground

287 Okuti Valley, Little River

03 325 1014

021 611 820

littlerivercampground.co.nz

Host: Marcus

Orton Bradley Park Camper Van Stay

Marine Drive, Charteris Bay

03 329 4730

ortonbradley.co.nz

Host: Ian

THINGS TO DO

Black Cat Cruises | Quail Island Adventure

B-Jetty, Lyttelton Wharf [Below Oxford Street]

03 328 9078

0800 436 574

blackcat.co.nz

Christchurch Gondola

10 Bridle path Road, Heathcote valley

03 384 0310

welcomeaboard.co.nz

International Antarctic Centre

38 Orchard Road, Christchurch Airport

0508 736 4846

iceberg.co.nz

Jack Tar Sailing

Dampier Bay Marina, Lyttelton

03 389 9259

027 435 5239

jacktarsailing.co.nz

Skipper: Mike Rossouw

Orton Bradley Park

Marine Drive, Charteris Bay

03 329 4730

ortonbradley.co.nz

thelyttelldirectory

2014 | 2015 your call to support local businesses around the harbour

EAT, DRINK, DINE

Godley Cafe 03 329 4800 godleyhouse.co.nz
2E Waipapa Avenue, Diamond Harbour Meet: Michelle Anderton

London Street Dairy 03 328 9350 Open 7 Days 7.30am to 10pm
34 London Street, Lyttelton Meet: Andrew and Glenn

Roots Restaurant 03 328 7658 rootsrestaurant.co.nz
8 London Street, Lyttelton Meet: Giulio and Christy

LOCAL EXPORTS

Blue Fusion 03 328 8646 bluefusion.co.nz
Web Design and Business Development 021 255 7403 Meet: Andy and Dana Dopleach

Lyttelsoft 03 328 8671 lyttelsoft.co.nz
Specialising in Accounting Software Meet: Penny Mercer

Real Homes New Zealand Limited 03 390 3393 realhomes.co.nz
PO Box 94, Lyttelton 021 224 6637 Real Estate Agent: Lynnette Baird

Saunders & Co 03 940 2435 saunders.co.nz
1063 Ferry Road, Ferrymead 022 133 6963

Sullivan Stone sullivanstone.co.nz
Architectural Stonemason 027 665 078 Stonemason: Brayden Sullivan

HEALTH, BEAUTY, FITNESS

Christchurch Yoga christchurchyoga.co.nz
Scout Den, Charlotte Quay, Lyttelton 021 071 0336 Instructor: Rebecca Boot

Lyttel Beauty lyttelbeauty.co.nz
32 Voelas Road, Lyttelton 03 328 7093
021 297 3885 Meet: Emma

We accept

LYTTELTON HARBOUR GIFT VOUCHERS



Sold at the
Lyttelton Harbour Information Centre, 20 Oxford St Lyttelton