

LYTTELTON REVIEW

August 2017 • Issue: 194

PURAU • DIAMOND HARBOUR • CHURCH BAY • CHARTERIS BAY • GOVERNORS BAY • RAPAHI • CASS BAY • CORSAIR BAY • LYTTELTON



IN THIS EDITION:

- **Lyttelton Community House Manager**
- **Facilitating Walking Access**
- **Plastic Free Lyttelton**

Next Issue print date: Issue 195, 22nd August 2017.

Content Deadline: 5pm 18th August 2017.

Review Creators

Lyttelton Harbour Review is a 100% voluntary community newsletter initiative developed after the February 2011 earthquake. It's a Lyttelton Harbour Information Centre initiative produced by Chairperson Wendy Everingham and Committee Member Jenny-Lee Love.

The objective of the Lyttelton Harbour Review is to help keep local residents informed with what is going on in the wider Lyttelton Harbour community. Of course the success of the Lyttelton Harbour Review could not be possible without the ongoing support and enthusiasm from the wider community.

A big thank you goes out to everyone who sends information; is willing to be interviewed or lets us know what might be happening in the neighbourhood. The Lyttelton Harbour Review project would not be possible without you all.

If you have an event, topic, sport announcement, fundraiser or cause that you would like to share with the harbour community, then Wendy or Jenny-Lee would love to hear from you:

Wendy Everingham
Office: 328 9093
Mobile: 021 047 6144
Email: infocentre@lyttelton.net.nz
Content Deadline: 5pm Friday

Jenny-Lee Love
Email: lytteltonreview328@gmail.com

Subscribe to the Review:

Email either Wendy or Jenny-Lee with the words "Subscribe Me" in the subject line and the Lyttelton Harbour Review will be delivered to your inbox.

In 2017 the Lyttelton Harbour Review is produced fortnightly. Any important information between times will be emailed as a Lyttel Broadcast if necessary.

Hard Copies of the Review are available at:

Council Service Centre
Fat Tony's
Lyttelton Bakery
Leslies Bookshop
Lyttelton Community House
Lyttelton Harbour Information Centre
Lyttelton Library
Lyttelton Top Club

Back Copies Available to Download:
www.lytteltonharbour.info



Shifting

Shifting around and prancing by shy,
Shifting with a smile hello and goodbye,
Shifting so sly I and we don't see why,

Shifting to survive rather than shift inside,
Shifting winds in out breathe sigh,
Shifting like dancing we don't want to cry,

Shifting in the groove that makes you stay,
Shifting stairways until it becomes fair,
Shifting a stare so it won't leave you bare,

Shifting gears to get on a high then,
Shifting with another to hide a lie,
Shifting into space that helps you untie,

Shifting my lord where are you,
Shifting I am there I am here,
Shifting my eyes to I am with care,

Shifting with ease when you let go,
Shifting together, it's not a race you know,
Shifting into loves flow feel the grace.

Ludovic C M Romany

Hannah Sylvester

Lyttelton Community House Manager

Hannah Sylvester is the current manager at Lyttelton Community House. She has lived in Lyttelton for almost 11 years with her family, For the past two years she has worked at Lyttelton Community House.. "I am a qualified social worker and feel extremely lucky to work here in Lyttelton in a job I feel passionate about" she said.

Lyttelton Community House has recently had a few changes the biggest being the departure of manager Christine Wilson and work colleague Kathy Bessant. "You will be pleased to know that Community House can still operate and that's thanks to a great team of dedicated volunteers who have stepped up to help out more" said Hannah. The volunteers help with a whole range of jobs that includes delivering meals to the Lyttelton Harbour Basin area, helping at the community lunch on Tuesday's and generally giving a hand in house when needed.

Hannah explains that there are two main parts to her job. "The first is welcoming people to Community House and making them feel at home with the end aim of creating a space where they belong and can connect with other people" she said. People who pop in have e access to the internet, hot drinks and a daily newspaper and on Tuesday's they are welcome to join in the shared community lunch at 12pm.

The second part of Hannah's work is connecting people into services both here in Lyttelton and the wider Christchurch area. "Recently I have assisted

people with finding housing, making appointments and filling out essential paperwork" she said.

Community House isn't open to the public on Thursday but Hannah reminds everyone that the Walking Group is still self organising from there. " If you would like to join this group come down at 10.30am. Everyone is welcome to attend. The group visits destinations all over Christchurch. They prefer flat walking and then enjoy a coffee stop to catch up and chat" she said.

If you are keen to support Community House the next special social activity is a fundraiser organised by Board member Fred Tunnicliffe. Together with Sarah from Freemans they have organised this year's fundraising Quiz, it will be on Thursday 10th August at 7pm, 4 in a team at \$15 per person with all proceeds going back to LCH (door sales and cash payment only). Hannah says, "This was such a success last year and great fun. There are not many tables left so call Freemans to book a table so you don't miss out- 328 7517".

If you are interested in finding out more about Community House or would like support, you are encouraged to come down and introduce yourself to Hannah or give her a call on 03 741 1427.

Open Monday, Tuesday, Wednesday and Friday 10-2pm.

Article Lyttelton Community House and Lyttelton Information Centre



Come in and meet Carolyn our new stylist.

She has been hairdressing for 25 years and trained internationally. Carolyn is a local mum with kids at Lyttelton Primary School.

Her speciality is hair-ups so book your appointment now for the ball season. She also loves colour and cutting so you're getting the whole package.

Introductory offer:
Woman's cut and BW plus free Pro fiber treatment

34 London St Lyttelton
328 8859
honeycombhair@xtra.co.nz

Facilitating Walking Access

Useful Information for Rural Landowners.

Banks Peninsula is really lucky to have the Rod Donald Trust. They are a Charitable Trust that was established by the Christchurch City Council back in 2010. This is their vision.

“The Rod Donald Banks Peninsula Trust has a bold vision to facilitate the restoration of Banks Peninsula to its traditional status as Te Pātaka o Rākaihautū – the storehouse that nourishes. In our vision Banks Peninsula has a rich biodiversity, planted streams, lakes and seas flowing with clean water. The local people are prospering and passionately participate in conservation. The Peninsula is known as an ecological island and a place for appreciative recreation, with low impact activities such as walking, cycling and affordable camping fostered to encourage learning about and respect for the environment.”

Since inception to achieve their goals they have been involved in many interesting activities. Some of their achievements include helping purchase Saddle Hill and Purple Peak/Curry Reserves, developing

comprehensive walking materials, facilitating the Te Ara Pataka/Summit Walkway, purchased a tramping hut and they have partnered with many other groups and organisations to achieve their desired outcomes.

Recently at Kaituna Valley Homestead the Trust facilitated a meeting that focused on walking access. An expert panel was present including representatives from the NZ Walking Access Commission, Department of Conservation, and relevant government departments. A wide range of people were invited; existing land holders who allow walking access, potential landholders who may permit walking access, Council staff, politicians, trustees, and other interested parties.

Many of the walking trails on the Peninsula are through private farm property. The event was held to have discussions about curly issues that people who provide walking access face. The newly introduced Health and Safety Legislation was driving most of the questions.



The results of the discussion were deemed very important to share with the wider community. Representing the Lyttelton Information Centre at the meeting we have produced this copy of the summary report kindly distributed by the Rod Donald Trust. This advice applies if you allow free access over your land for walking or cycling.

The Health and Safety at Work Act 2015 is principally aimed at worker safety. When visitors access rural land on tracks they are deemed as visitors and not workers. On farming land where access is free the Health and Safety legislation only applies around work sites. This means farm buildings or active work sites. It does not apply to unattended grazing stock. These working areas need to be appropriately signed for relevant hazards. Ultimately visitors do have responsibilities about their own safety and the risks they take plus the people who are under their care.

Landowners and managers need to be aware of the tracks on their land and take reasonable steps to

ensure public safety. For instance erecting signs if there is a hazard or notifying people of calving .

Interestingly the same rules apply for unformed legal roads. DOC or the CCC are primarily responsible for the visitors that use those tracks. The public is legally allowed onto these roads.

If disputes do arise from access issues this forum highlighted that the NZ Walking Access Commission can become involved and Walking Access Easements under the Walking Act 2008 provide a simple and effective mechanism to clarify rights and responsibilities around public access.

More information about the Commission is provided on its website www.walkingaccess.govt.nz. The Commission provides information about where there are rights of public access on its mapping system WAMS www.wams.org.nz.

Article Lyttelton Information Centre



Plastic Free Lyttelton

Since the Plastic Bag Free initiative was introduced to Lyttelton there have been some positive outcomes.

Rob De Thiers from Lyttelton Supervalu is making progress. "In store, we now have paper bags for all loose fruit and vegetable purchases. We are also going to be one of four stores in the whole country to be trialling a fully compostable bag for general purchases. We believe that will be instore from August" he said. "Fully recyclable meat trays are also coming. Just give them a wash and they are suitable for collection." He also advises that a customised hessian bag is coming.

The Lyttelton Fruit and Vegetable Collective has also made great progress. Teams of local sewers have made over 100 bags so that the weekly fruit and vegetable order can be distributed in material bags rather than plastic ones. All the vegetables inside the bags now are generally plastic free as well.

Sue-Ellen



Sandilands

has been one of the key people for this project. "Sewing the bags is really therapeutic for me. It's how I relax" she said. When you see these "chequered bags" around town they form part of that large order. A big thank you to all the locals who have made that happen. Sue-Ellen has literally sewn hundreds of bags over the last couple of years. She's generally also the person behind the lovely cloth bags that you receive as a Welcome Bag in Lyttelton.

This particular initiative with the Fruit and Vegetable Collective has flowed onto other communities. Now Heathcote vegetable orders are also collected in material bags made by their community. The umbrella organisation, Linwood Affordable Fruit and Vegetable Group are also following suite and in the near future it's hoped all the communities will have material bags for their fruit and vegetable orders.

Lucette Hindin and Kerry



Donnelly have looked at waste streams with the Farmers Market. Focusing on vendors they have created a waste scheme that rewards sellers for not having plastic bags and other non-recyclable products at their stalls. If stallholders insist on still using plastic and other non-recyclable products they are charged a small levy as a disincentive. A separate Waste Matters stall also operates at the market. They sell reusable coffee cups, plastic free wrappers etc.

Many shops in Lyttelton don't offer plastic bags at all. The Information Centre is plastic free. Henry Trading, Harbour Coop and others are as well. Keep an eye out for the returnable cloth bags that will be available from the front of Harbour Coop shortly.

Looking further afield the Christchurch City Council is also helping move forward with positive outcomes. Back in 2002 they launched Rubbish-free Parks. If you ever wondered why there are no rubbish bins in Urumau and Whakaraupo Reserves this initiative was introduced to increase people's awareness of their impact on the environment and to gently encourage them to reduce, reuse, and recycle and take their rubbish home with them

The Yellow Bin scheme has also been beneficial. Some plastics can be recycled. You can get really detailed information by installing the Christchurch City Council Kerbside Collection App on your mobile phone. The most important thing to note is that lids are not recyclable. It is just the container. Similarly, tetra packs for milk substitutes are not recyclable. Plastics labelled 1-7 are fine as well as supermarket plastic bags.

The challenge for us all is to think of ways to eliminate the plastic we use.

The Lyttelton Reserve Management Committee Planting Group is another great example of a group not using as much plastic as some planting teams do. They don't use plastic covers to encase newly planted plants. They have discovered that long grass is just as effective. Most pests hate long grass and together with a no spray programme they have found plastic covers are not required!

What have you done to eliminate the need for plastic?

Get in touch we'd love to publish more community examples of Plastic free Lyttelton

Article Lyttelton Information Centre



Christchurch Community Accounting Courses for Community Organisations

Financial Control Workshop Do your internal processes protect you sufficiently from significant fraud? This workshop covers the danger areas and the steps that you can take without burying your organisation with paperwork. When: 10 August, 10am – 12pm. Click here for more information.

Training Your Board – On Demand Workshop We can come to you, during your normal Board meeting time, and take you through the basics of financial governance, explain your own financial reports and situation, and talk about financial goal setting. Click here for more information.

Cultural Awareness and the Treaty of Waitangi - 23 August

Increase your understanding of how the Treaty is relevant to your workplace. Introductory/refresher level. Experienced tutor and positive learning environment. Cost is \$50. Contact Cathy Sweet 027 256 8908 or csweet@xtra.co.nz When: 1-5pm, Wednesday 23rd August 2017

Where: Quaker Centre, corner Ferry Road and Nursery Rd

Ground has one more class coming up over winter.

It is The Spice Route. We are looking at the countries and regions along the ancient spice route, learning about the spices and what they go well with. From the Moluccas to Morocco, Egypt to Persia, Kerala to Hanoi, a wide variety of dishes and techniques.

This is on Sunday 13th August. Space is limited, so you will need to book soon if you are interested.

Cost is still only \$130 per person which includes the hands-on class, the 4-course dinner with matching drinks and the recipes to take home. Contact info@ground.co.nz

Zumba Gold® Fitness •

Tuesday: 1.30pm – 2.30pm, Lyttelton Recreation Centre, Lyttelton (25 Winchester Street) • • Friday: 11.30am – 12.30pm, Lyttelton Recreation Centre, Lyttelton (25 Winchester Street)

Lyttelton Community House (LCH) meals programme

This service provides five cooked meals a week. On

Monday & Wednesday recipients will receive two hot meals (to cover Mon/Tues & Wed/Thurs). On Friday one hot meal plus a dessert is delivered. These meals are delivered between approximately 3-4pm, and cost \$8.50 each. If you are interested in this service, please get in touch with Hannah at hannah@lytteltoncommunityhouse.org.nz

Lyttelton Sit / Stand & Be Fit Class - Tai Chi / Qi Gong

A chance to get out of the house and warm up in an easy to learn social setting. Increase your flexibility, balance and coordination whilst healing and relaxing your body. Classes begin on Monday 7 August from 11am – 12pm at the Trinity Hall, Lyttelton Recreation Centre, 25 Winchester Street. The cost is \$6 per class. For further details contact Geraldine 027-644-4455

Advertising in the Review

Since the inception of the Lyttelton Review we have been very generous with advertising. Any one off advertisements for businesses have generally been published free. Advertisers are encouraged to make a donation to our volunteer organisation.

To be a permanently listed business in the directory and have articles written about your business we have a yearly membership fee of \$165 including GST. If you would like to have a yearly listing please contact us infocentre@lyttelton.net.nz and we will forward our membership application.

Parenting Week

Parenting Week is here from the 21-31 August. There are heaps of different seminars, workshops and talks which are being held around Christchurch which will be helpful for families and those involved in supporting them. For further information about the speakers, workshops, and what seminars are on take a look on <http://www.nht.org.nz/parentingweek>. Bookings and ticket sales are now live on <http://www.dashtickets.co.nz/tour/916>

The Salvation Army Community Ministries Courses

Courses currently on offer through the Community Ministries Centre at 853 Colombo Street, Christchurch. Life Skills for Women programme. This course runs on weekly for eight sessions, Wednesday mornings for 2 hours. This course has a strong emphasis on self-awareness and self-care; and covers basic physical and emotional health knowledge, relationship skills,

communication and assertiveness, budgeting and goal setting. This course is offered four times a year, timed to fit in with primary school terms. For men we offer the Positive Lifestyles Programme in a group format. This consists of seven weekly sessions, on a Tuesday morning.

Topics covered include: stress management, grief and loss, problem solving & conflict resolution, assertiveness, self-esteem and goal setting. This course is offered twice a year, and alternates with the Men on a Mission course - which we run in conjunction with the Methodist Mission, and aims to get men connecting with each other and with various community activities. The Triple P Parent Discussion Group is most beneficial for parents of children aged 2-12 yrs. Each week focuses on a particular parenting situation, with the strategies and skills learned are applicable to a variety of parenting situations.

We run this course 2 - 3 times per year, depending on demand. These groups run for 2 1/4 hours on a Thursday morning for 5 weeks. The next course is commencing 3 August. Our Create and Conquer sewing course is run by our Social Worker, with the aim of supporting clients in overcoming social anxiety and building friendships while learning basic sewing skills and working on craft projects. It is currently running on a Thursday afternoons, with the next group starting 3 August.

In the fourth term, the Create and Conquer course is replaced by our Getting Ready for Christmas group which again focuses on building friendships while participating in Christmas focussed crafts and activities, and learning about budgeting and festive cooking. Clients can self-refer to any of these courses, or you can contact Jillian Wordsworth with their name and contact details via phone 03 366 8128 or email christchurchcity_corps@nzf.salvationarmy.org

Citizens Advice Bureau is open at The Loft Eastgate Mall on Tuesdays

Citizens Advice Bureau (CAB) operates a satellite service at The Loft in Eastgate mall every Tuesday from 11am- 2pm. There is a meet and greet desk in the Linwood Library, where clients can informally meet our volunteers and have a chat. For those people with sensitive or difficult issues needing privacy, Citizens Advice has an interview room in The Loft.

Since CAB has opened we have dealt with a wide range of questions from simple problems, right through to complex difficult situations. Some of the topics we have helped people with include: mental health, access to advocacy support with WINZ,

tenancy, neighbourhood disputes and accessing food banks. There's heaps of great information to help on our website www.cab.org.nz, or call 0800 FOR CAB (0800 367 222) and we can help you work through your options.

Get to know a sewing machine

Adult Course

4 weeks from Tuesday 1st August 7.15pm for 1 hour 1/2 in the community board rooms on Canterbury st. Lyttelton. \$80 covers all costs of fabrics zips buttons etc. The aim of the course is for individuals to gain confidence in using either their own sewing machine or one provided. The 4 weeks will cover use of stitches when and how to use them.

Inserting zips
Button holing
General machine understanding and maintenance.

Projects will include cushion covers, bags or specific objects requested. Please feel free to ask for full course content. 0212592086

Red Cross Funding Grants

Available for neighbourhood and community events via Methodist Mission up to May 2018. (\$300, \$500, and \$1,000). Next proposal deadline Friday 1 September 2017. Advisable to let Community Response worker Tineke Tuiletufunga know about your plans: tineke@mmsi.org.nz 389 6232 or 027 818 7117. Find out more on facebook.com/communityconnectionsgrants

Semi -furnished house available in Lyttelton

- House with 3 large bedrooms, one bathroom and separate toilet.
- On the sunny East side of Lyttelton.
- Sunny and warm with two heat pumps, gas fire, double glazing and insulated.
- Semi-Furnished - has a queen bed, table and chairs, coffee tables, sky dish etc.
- Incredible views as all the house is on an upstairs level.
- Large sunny deck. Beautiful garden and large flat recreational area with amazing views. It has steps.
- Suit a couple, or a small family.
- No smokers and no pets thank you.
- \$470 per week.

Phone Michelle 3288020 or 0274160625

House for Rent

3 bedroom house with sheltered off street parking. Fully insulated, double glazed with a heat pump. Spacious deck, neutral décor plus outdoor storage. Quiet location with mature easy care surrounds. \$375 pw. Call Roy 03 281 7533

Volunteer for 'Lyttel Tumblers'

Plunket "Lyttel Tumblers" are looking for a volunteer to help set up the Lyttelton gym on a Thursday morning during school term time. The time is flexible, either an 8am or 8.30am start for 30 minutes. The role would involve helping to get all the equipment in place before the class starts at 9.30am. For more information please get in touch with Lynda on 021-061-5096.

Companion/Carer for Elderly Gentleman (My Dad)

We are looking for a warm, kind and understanding person to be companion for my Dad. He lives in a rest home and would love someone to visit a few times a week. He is in a wheelchair and loves outings in the wheelchair taxi. We need someone trustworthy and reliable with a positive outlook on life. This is a paid position. Contact Melanie 0212166511

Room for Rental

Beautiful double room in Historic Villa in Lyttelton available. Short term or relatives visiting? This would be perfect. Comfortable, clean, warm and peaceful place to come and relax or live. Please contact Janette on 021 252 1256

Seminars for Parents and Those Working with Children

Come along to hear Dr Gordon Neufeld, an international developmental psychologist. From the 25 - 29 September, at South West Baptist Church, 244 Lyttelton St.

Four day-time seminars: Resilience, Recovery and Relationship; Making Sense of Pre-schoolers and Those that Act Like Them; Making Sense of Aggression; Bullies: Their Making and Unmaking

Two evening seminars: The Roots of Attachment; Raising Kids in a Digital World

Day seminars are \$200 until 12 September, then \$220. There's a \$100 discount on the first seminar for first 100 to register. Evening seminars \$10 pp. More information and tickets from: http://www.dashtickets.co.nz/search/?search=®ion=&month_year=&per_page=&per_page=90

Health in All Policies (HiAP) Newsletter

The HiAP newsletter is produced by the Canterbury DHB's Community and Public team at least twice a year. To subscribe to this newsletter or to read the latest editions, please visit <https://www.cph.co.nz/your-health/health-in-all-policies-newsletter/>

Full Time Work Wanted.

I am a reliable and enthusiastic young female with previous experience in front of house waitressing and bar tending, as well as hotel housekeeping. I am also a qualified personal trainer and have had early childhood and after school programme experience. Please contact me on my mobile if you know of anything, I would really appreciate it. Thank you, Samara. 0278464057



Polhill Bay Shooting Range Ever Heard of It?

Lyttelton has loads of well kept secrets. Polhill Bay Shooting Range is one that I had never heard of until fairly recently. It is named after the family of Baker Polhill who immigrated to New Zealand in the 1840's. In September of 1849 Baker was employed by the Canterbury Association and became a foreman who headed up the work crew for Captain Joseph Thomas on the newly forming Sumner Road project.

His family lived at Polhill Bay. The bay doesn't exist anymore but was in the vicinity of Cashin Quay. The name however remains with a small historic shooting range located on Urumau Reserve and adjoining Lyttelton Port Company land.

The rifle range runs parallel to the Lyttelton Sumner Road. There are two mounds in Urumau Reserve. The range dates back to 1866 and were actively used by the Lyttelton Volunteer Artillery. At this time in New Zealand the military was a voluntary organization.

Another gem located in Urumau Reserve.

Article Lyttelton Information Centre



The Story of Lyttelton Community Garden:



Part 1

In a series of three articles we look at a part of Lyttelton that you may have walked through, thought about but may not have visited in a while, the Community Garden. Tucked up behind the swimming pool and regularly visited by those walking up and down into town it is part of the landscape of Lyttelton but is it still part of our community. When was the last time you thought about the garden?

Energy still existed for the new garden. With the promise of the former nursery above the original garden, plans were made to turn the rundown site into a fully functioning garden complete with hot house, potting shed and larger grounds than previously gardened. The former maintenance building was also the perfect building for Project Lyttelton to locate its own offices as before this volunteers and workers had worked from home.

The land the group had been given included a section of flat land that had previously been a prison (with the blue door still visible in the walls), native plant nursery, a very steep slope and a building that although originally part of the nursery complete with holes in the ceiling for propagation lights had also been used downstairs as a furniture makers. The site did have an existing large glasshouse and structures on site, however the site needed a huge amount of work which was carried out by a small number of people. Skip



loads of rubbish including large amounts of glass were removed, paths were carved into the hillside, orchards developed and fruit and vegetables began to grow and a community garden blossomed.

So why does Lyttelton have a community garden? How did it start? The community garden was started in the late 1990's by a small group of local people who came together around the desire to heal following a shared emotional event. Gardening behind a house on the site that had been donated to the community and located where the grassed area is now uphill alongside the pool. Others became involved and the garden thrived.

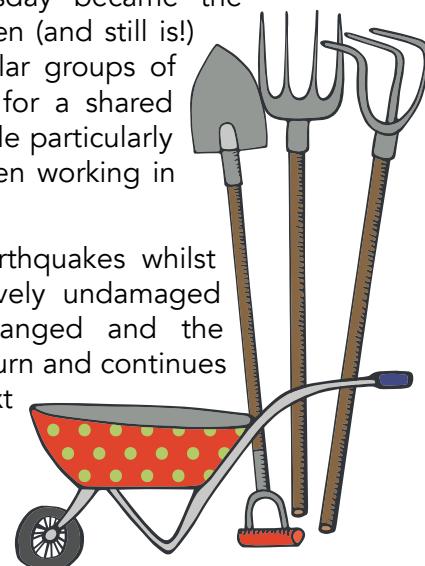
Plans for the land higher up the slope were mooted with ideas around hot pools and car parks being discussed but never eventuated. Discussions between members of the gardening group and the former Mayor of the Banks Peninsula District Council, Bob Parker resulted in the Community garden being relocated to the top section of land where it remains today. A twenty

year lease was granted to Project Lyttelton for the upper part of the site and the Council took over the lower section of land to use for the pool extension. This arrangement however meant that the garden that had been tenderly developed was part of the pool redevelopment.

The community garden naturally came under the custodianship of Project Lyttelton as many of those working in the garden were also involved with Project Lyttelton and Wednesday became the open day for the garden (and still is!) with lunches and regular groups of 20+ coming together for a shared lunch with lots of people particularly those with small children working in the garden.

However, after the earthquakes whilst the garden was relatively undamaged peoples' priorities changed and the story takes a different turn and continues in part 2 in the next Lyttelton Review.

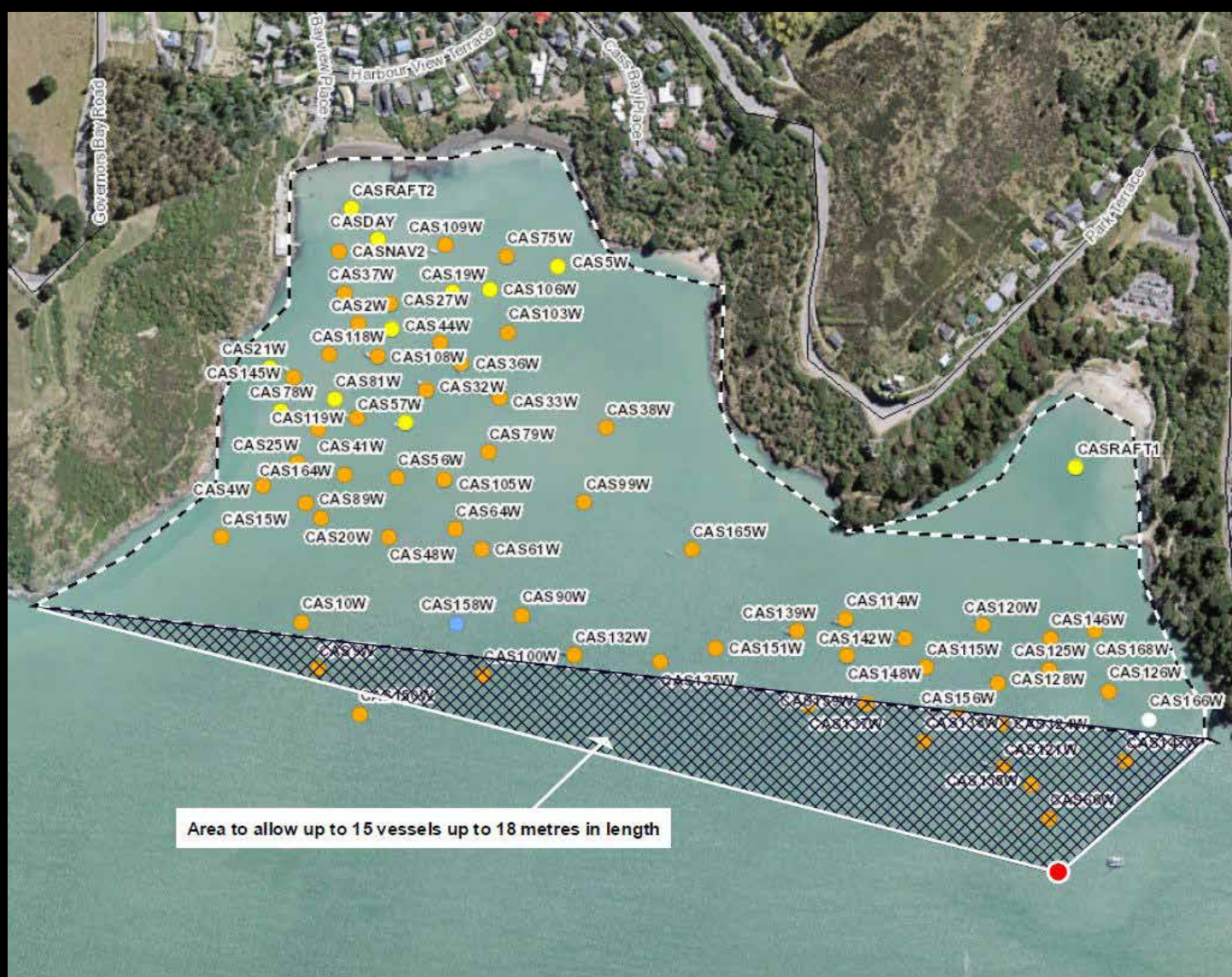
Article Lyttelton Community Garden.



Proposal for new moorings in Lyttelton area

Environment Canterbury's Harbourmaster's office would like your feedback regarding the placement of up to 30 new moorings in the Lyttelton area. This will allow for current moorings to be spaced out, providing better swing room and for some new moorings to be placed by members of the public. The specific areas being looked at for the new moorings are just outside the current areas of moorings at both Purau and Cass/Corsair Bays.

For more information, or to discuss the proposal, get in touch with the Mooring Officer at the Harbourmaster's office on 03 328 9162 or at harbourmaster@ecan.govt.nz.



Area to allow up to 15 vessels up to 18 metres in length



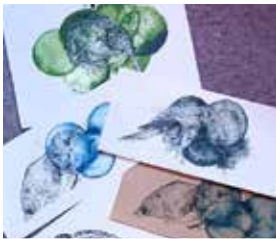
EVENTS



THE LYTTTEL KIWI
HAND-MADE ARTS & CRAFTS
NEW GIFT SHOP
OPENING 9th AUGUST
WEDNESDAY from 10am
15 London Street
LYTTELTON
FACEBOOK: THE LYTTTEL KIWI



- FRESH FLOWERS • HAND - MADE GIFTS • CLOTHING • SOAPS •
- RARANGA • HAND MADE CANDLES & SOY MELTS • UP CYCLED GOODS •
- LOCAL ARTIST'S PRINTS • GREETING CARDS • POUNAMU • JEWELLERY •
- KNITTING • TOYS • COMMISSIONED ITEMS AVAILABLE & MUCH MORE!



Otamahua / Quail Island

ECOLOGICAL RESTORATION TRUST



ŌTAMAHUA / QUAIL ISLAND 2017 PLANTING DAYS

Spaces available on Sunday August 6, August 13, August 20, August 27

9:00 am to 3:30 pm, bookings essential

Phone Ian on 384 5338 or 0273 928 047 or e mail: volunteers@quailisland.org.nz

Website: www.quailisland.org.nz

Krayzie K's Trail Races

17th & 18th November 2017

Orton Bradley Park
Charteris Bay, Christchurch

DistanceS:	100MileS	...	100KMS	...	50KMS	...	25KMS	...	12.5KMS	...	6KMS
Altitude:	7610M	...	4680M	...	2340M	...	1170M	...	580M	...	260M



Trail running events to suit all abilities
from introductory to experienced ultra runners



Open to ages 10 years & over

Single track, stream crossings, farm tracks, hills and valleys

Made up of 12.5km laps ... the 6km is half a lap

The longer the distance the more laps

Return to base every half lap for support,
nourishment and frivolity.

Altitude & Attitude ... a real trail running challenge
that's also fun and achievable

A day for the whole family

Bring a picnic lunch, wade in the stream,
playground for the children, cafe nearby for the adults

Are You Krayzie Enough?

For more information and to Enter go to:

www.krayziekapers.net

Follow us on Facebook.

Krayzie Kapers



Casual Data Collector Fisheries Team

Lyttelton

NIWA is New Zealand's leading environmental research institute and key provider of atmospheric, freshwater and marine research and consultancy services in New Zealand.

We are seeking an enthusiastic and reliable Data Collector to conduct surveys at the above boat ramp. The role involves interviewing recreational fishers and recording data about the types and volumes of finfish caught.

Our Data Collector will conduct work on the boat ramp on 2-3 days per month between 1st October 2017 and 30th September, 2018. These days are weekends or public holidays (highest fishing traffic). Interview sessions are 4 hours in length hence a total of 8-12 hours per month. You will need to be available for a half day training session between 2-6th September or 13-16th September (details to be confirmed).

Our successful applicants will be able to work effectively unsupervised, have good verbal communication skills, and the ability to accurately record data. In return you will receive a competitive hourly rate and the opportunity to work outdoors!

Interested in knowing more? Contact Niki Davey on email niki.davey@niwa.co.nz or 0800926278 and we will provide more details.

Applications close: 14th August 2017.

LYTTELTON COMMUNITY HOUSE
FUNDRAISING

Quiz Night

at
Freemans Dining Room
Lyttelton

7pm on Thursday 10 August 2017

Grab your **team of 4** & book a table with **Freemans Dining Room** on 328 7517

Cost: **\$15 per person**
Door sales & cash payment only

All proceeds go to the Lyttelton Community House Trust

There will be a **Raffle** during the evening
with prizes kindly donated by Freemans

Happy hour drinks, pizza and snack menus
available to purchase throughout the night.

You won't want to miss this fun-filled evening!

Freemans Dining Room
47 London Street, Lyttelton
03-328-7517



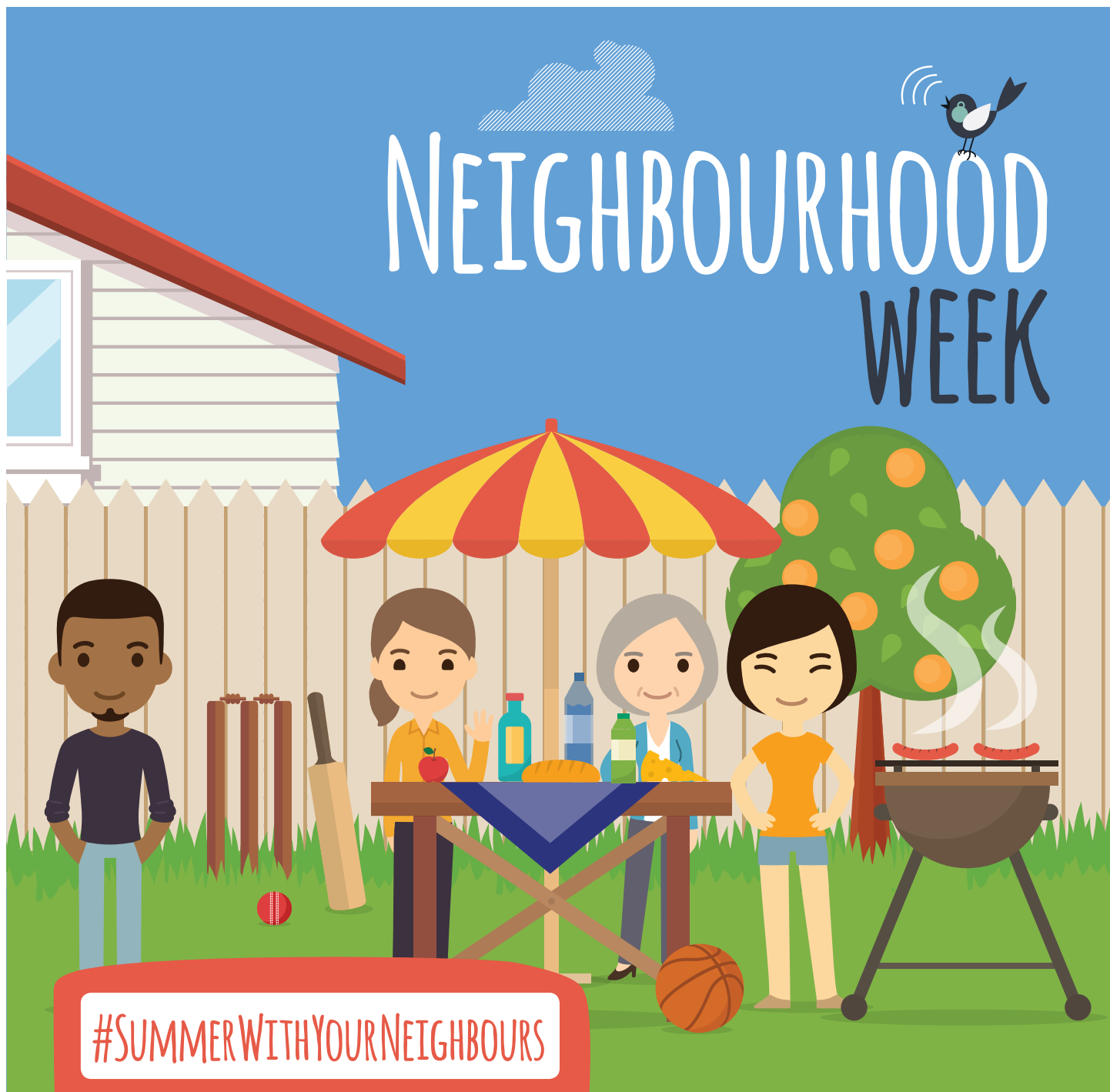
THIS LAND

Drawings and paintings by Hamish Anderson

Stoddarts Cottage, off Waipapa ave,
Diamond Harbour

Every weekend throughout August

NEIGHBOURHOOD WEEK



#SUMMERWITHYOURNEIGHBOURS

CRANK UP THE BBQ FOR THE NEIGHBOURS,
CHALLENGE YOUR MATES TO A BACKYARD CRICKET
TOURNAMENT, OR MAKE YOUR COMMUNITY
A BETTER LOOKING PLACE WITH A CLEAN-UP
DURING NEIGHBOURHOOD WEEK 2017!

APPLICATIONS FOR FUNDING CLOSE
FRIDAY 1 SEPTEMBER 2017 AT 5PM.

Get to know your community during
Neighbourhood Week (27 Oct 2017–31 March 2018)
and you could receive a small subsidy to go towards
your event* thanks to Christchurch City Council's
Community Boards.

*Terms and conditions apply.

For more information, application forms and
great ideas visit ccc.govt.nz/neighbourhoodweek

Christchurch
City Council 

Zumba at Lyttelton



Zumba Gold Fitness is a fun, low impact, easy to follow exercise, for active older adults and beginners which lets you move to the beat at your own pace

Every TUESDAY - 1.30 pm - 2.30 pm
and

Every FRIDAY - 11.30 am -12.30pm

at

Lyttelton Recreation Centre
25 Winchester Street
Lyttelton

Cost \$5 per session

For further information contact -

Mele Paoese (Tutor) - Telephone 021 216 5039

OR

Ellen Graham - 03329 4361 or 021 029 03122

Come along and join us next Tuesday and Friday for a friendly, fun filled hour of exercise, followed by a complimentary a cup of Coffee/Tea and light refreshments afterwards

Botanical Wanderings in Urumau Reserve 2017



**Discover the amazing plant life in
Urumau Reserve.**

**Guided walks with
Brian Downey.**

July 29, August 5, 12, 19, 26 and September 2.



**Cost \$5 per person or Time credits
accepted.**

**Eight people per session. 1-3pm.
Good footwear essential.**

**Meet at the far end of Foster Terrace
at 1pm.**



Registration essential: Phone 328 9093 or
email: infocentre@lyttelton.net.nz

If raining Saturday postponed to Sunday.



Events

WEDNESDAY AUGUST 9TH

Fat Tony's 5-7pm
Happy Hour

Wunder Bar 8pm
Al Park and his pals

Tribal Diva Belly Dance 6.30pm

Wunder Bar 7.30pm
Open mic and showcase

THURSDAY AUGUST 10TH

Fat Tony's 5-7pm
Happy Hour

Freemans
Community House Quiz

Lyttelton Club 5-6 7-8pm
Happy Hour

WEDNESDAY AUGUST 16TH

Fat Tony's 5-7pm
Happy Hour

Wunder Bar 8pm
Al Park and his pals

FRIDAY AUGUST 11TH

Fat Tony's 5-7pm
Happy Hour & Assembly Required 9pm

Lyttelton Club 4-6pm
Happy Hour

THURSDAY AUGUST 17TH

Fat Tony's 5-7pm
Happy Hour

Lyttelton Club 5-6 7-8pm
Happy Hour

SATURDAY AUGUST 12TH

Fat Tony's 5-7pm
Happy Hour

Lyttelton Arts Factory 6.30-8pm
Ecstatic Dance Music and Movement with Live DJ

Naval Point Club 9-5.30pm
Learn to Sail

FRIDAY AUGUST 18TH

Fat Tony's 5-7pm
Happy Hour

Hell Fire Club 8pm
Dan Callahan & Jazz Quarter

Lyttelton Club 4-6pm
Happy Hour

SUNDAY AUGUST 13TH

Fat Tony's 5-7pm
Happy Hour

Freemans 3.30-6.30pm
Carmel Courtney and Friends

SATURDAY AUGUST 22ND

Fat Tony's 5-7pm
Happy Hour

Naval Point Club 9-5.30pm
Learn to Sail

TUESDAY AUGUST 15TH

Lyttelton Club 7pm
Evening Housie

SUNDAY AUGUST 23RD

Civil and Naval 8pm
Dan Callahan & Jazz Quarter

Fat Tony's 5-7pm
Happy Hour

Freemans 3.30-6.30pm
Carmel Courtney and Friends

Coming Up:

August 26th Wunderbar Aaron Carpenter & The Revelators release new single 'Pretty Lies'

Beloved Waiheke country/rock act Aaron Carpenter & The Revelators delve into their newfound swamp sound with their grinding and gritty single, 'Pretty Lies'. Recorded in a barn on Waiheke Island with producer Nick Abbot (The Subways, Robert Plant, The Datsuns), the track conjures up a raw rock incarnation of their deep-seated country and blues sound.

Written about a fleeting romance kept secret and the affect of decisions made in the heat of the moment, Pretty Lies is a song that explores the frustrations of love's fragility.

The single is the first from Aaron Carpenter who has a strong history in country and blues music since sneaking into famed Ponsonby venue The Glue Pot and nestling himself on stage with local blues legends like Midge Marsden.

It wasn't until he returned to New Zealand after traveling the world as a vagabond musician that Aaron began exploring his love of music and creating his own material for the first time, leading to the formation of his band The Revelators, made up of drinking buddies and fellow Waiheke Musicians, Derek Solomon, Lee Carlin, Nikki Ngatai and Miles Gillet. Since their formation, Aaron Carpenter & The Revelators have become an integral part of New Zealand's steadily growing Americana scene and has seen the band perform at Spark Arena's Southern Fork Americana Festival alongside names such as Robert Ellis, Hayes Carl and Blind Boy Paxton.

The single is the first from the band's upcoming debut album of the same name and is due for release in early August.

Wunderbar, Lyttelton • Saturday August 26th with Breakwater & special guests // Meow,

Exhibitions:

Lytel Gallery

Allison Hussey – Private Collection

20 Oxford St Lyttelton Mon-Sati 10-4pm Sun 11-3pm



Spooky Boogie

Work by Robert Scott until Aug 26th

Stoddart Cottage Gallery

Our Land – Hamish Anderson



"Self-taught artist, Hamish Anderson, uses paint and coloured pencils to capture the evocative light and colour of the New Zealand landscape. His work is informed by New Zealand landscape artists such as Rita Angus, Michael Smither, Rata Lovell-Smith and Leo Benseman, but still maintains an individual voice.

This Land features works in acrylic and oil paint and pencil from 2000 to the present."

Opening Hours Saturday and Sunday 10-4pm.

Community Activities in and around the Harbour this Week

MONDAY

Community Choir

7.30pm Union Chapel, Winchester Street, Lyttelton.
All welcome. Jillie 021 152 8068

Diamond Harbour Yoga

6.30pm - 8pm
General Class, Diamond Harbour Rugby Rooms

Harbour Yoga Vinyasa

9.15am-10.30am. 021 882 403
General Class, Trinity Hall

TUESDAY

Community House

Shared Lunch 12.00pm 7 Dublin Street
Make new friends

Diamond Harbour Yoga

6am - 7am
Early Bird Class
Diamond Harbour Stage Rooms

Lyttelton Health Qigong for Seniors

9.30am – 10.30am
Union Church, Winchester Street \$5
Geraldine Parkes 03 328 7284 or 027 644 4455

Lyttelton Library Storytimes

11.00-11.30am

Lyttelton Yoga

9.30am - 10.45am
6.30pm - 8pm, Scouts Den Lyttelton
Contact Rebecca Boot 021 071 0336

Diamond Harbour Bridge Club

1.20pm for 1.30pm start
Diamond Harbour Football Club Rooms. \$4 table
For more information call 329 4868 or 329 4149

Lyttelton St John Youth Division

6.00pm St John Ambulance Station
52 London St, Lyttelton

St Josephs Worker Catholic Church

9am Mass 21 Exeter Street, Lyttelton
All Welcome More information call 384 1600

WEDNESDAY

Diamond Harbour Bridge Club

Bowling Club Rooms. All welcome
6.40pm for a 6.50 start
Partner finder - Carolyn Craw. Ph 329 4684

Diamond Harbour Singers

7.30 - 9.00pm
Every Wednesday in Stage Room of Community
Hall. All welcome. Contact Margie 329 3331

Diamond Harbour Yoga

6am - 7am
Early Bird Class
Diamond Harbour Stage Rooms

Lyttelton Cubs

6.30pm
Contact Mark Brabyn 027 281 6180

Lyttelton Garage Sale

10.30am 54a Oxford Street, Lyttelton
Second Hand Bargains and more.

Lyttelton Harbour Fruit and Vegetable Collective

Trading between 12.30 and 2.45pm at the Lyttelton
Information Centre 20 Oxford Street Lyttelton
Contact Jill Larking for more info 027 237 4960

Lyttelton Library Wednesdays Knit and Yarn

10.00-12.00pm

Lyttelton Play Group

Lyttelton Playgroup
At Kidsfirst Lyttelton
12.30pm- 2.30pm
33 Winchester St Lyttelton
Call 03 328 8689 for more information

Harbour Yoga Vinyasa

6pm-7.15pm. 021 882 403
Gentle Class, Trinity Hall

THURSDAY

Community House Flat Walking Group.

10am
Contact Hannah Sylvester. Ph: 741 1427

Diamond Harbour Yoga

6am - 7am Early Bird Class
Diamond Harbour Stage Rooms

Governors Bay Volunteer Fire Brigade

7.00pm Governors Bay Fire Station
Weekly Training, New Members Welcome

Lyttelton Garage Sale

10.30am 54a Oxford Street, Lyttelton
Second Hand Bargains and more.

Lyttelton Volunteer Fire Brigade

7.00pm Lyttelton Fire Station
Weekly Training, New Members Welcome

FRIDAY

Diamond Harbour Yoga

6am - 7am
Gentle Class
Diamond Harbour Rugby Rooms

Community Activities in and around the Harbour this Month

Lyttelton Garage Sale

10.30am 54a Oxford Street,
Lyttelton Second Hand Bargains and more.

Lyttelton Library Fridays Babytimes

10.30-11.00am

Lyttelton Yoga

9.30am - 10.45am

Scouts Den Lyttelton

Contact Rebecca Boot 021 071 0336

SATURDAY

Lyttelton Farmers Market

10.00am London Street,
Lyttelton Fresh produce, Live Music, Buskers and More

Lyttelton Garage Sale

10.00am 54a Oxford Street, Lyttelton
Second Hand Bargains and more.

Lyttelton Harbour Bazaar Market

10.00am No 6 London St. Artists, Bric a Brac and More

SUNDAY

St Saviour's at Holy Trinity

17 Winchester Street

10.00am Service with Holy Communion

2nd Sunday of every month only

Port Hills Uniting Church Service

10am Sunday Worship. All Welcome

GROUPS

Banks Peninsula Community Board

1pm Second Monday Each Month

Meetings Open to the Public

Bay Harbour Toastmasters

6.30pm. Every 2nd and 4th Wednesday of the month

Lyttelton Community Board Room, 25 Canterbury St

Contact: Jann Meehan, 021 263 1040

Diamond Harbour Civil Defence

7.00pm Third Wednesday of the month.

Community Church Diamond Harbour

Contact: Wendy Coles 0211541434

Governors Bay Civil Defence

7.00pm Third Wednesday of the month.

Governors Bay Fire Station Contact

Contact: Ian Palmer 3299 160

Lyttelton Harbour Business Association

Networking Meeting 9.30-10.30

Fat Tony's, 17 London St

More Info call 021 027 05450

Lyttelton Lions

7.30pm Second Tuesday Each Month

Lyttelton Community House

Contact: Mary 03 328 8523

Lyttelton Museum Historical Society

Contact Wendy McKay

info@lytteltonmuseum.co.nz

Lyttelton Netball Club

Contact Flo McGregor flomac@xtra.co.nz

Lyttelton Rugby Club

For details visit the club Facebook Page or contact
the club's Rugby Manager

Nathan.mauger@gmail.com 021 111 6069

Little Ship Club Canterbury

We meet on the 3rd Thursday of the month usually
at Naval Point Club Lyttelton from 7.00pm. The club
has regular guest speakers and undertakes a large
range of activities that increase the knowledge and
skills and enjoyment of its members and for the
benefit of yachting generally. All welcome
www.littleshipclubcanterbury.wordpress.com

Lyttelton Time Bank

10-4pm Tuesday to Friday. 20 Oxford St Lyttelton

328 9093 www.lyttelton.net.nz/timebank

Lyttelton Toy Library

Located at the Lyttelton Rec Centre Squash Court
25 Winchester St. Open each fortnight on Saturday
morning 10-12 noon. For more information
see Facebook Lyttelton Toy Library or email
lytteltontoylibrary@gmail.com or call Helen 021 075
4826

Naval Point Old Salts Lunch

The Old Salts Lunch is being held on the 2nd
Tuesday of every 2nd month with the next one being
held next Tuesday, 10th February starting @ 12:00
with 2 course lunch commencing @ 12:45.

Contact Barry Bowater 329 4828 or 0272743520

Narcotics Anonymous Lyttelton Meeting

6:30 Monday Community House. 5 Dublin St.

www.nzna.org

St Joseph the Worker R.C.Church

5.30pm Mass 3rd Sunday of the month. Parish House
21 Exeter Street Lyttelton. Ph: 384 1600

thelytteldirectory

2017 your call to support local businesses around the harbour

PLACES TO STAY

B@B Settlers Retreat 153 Governors Bay Road	021 186 3220 021 144 2979	thackergj@slingshot.co.nz Hosts: John and Gaynor Thacker
Black Kiwi Apartment, Reserve Terrace, Lyttelton	022 0541954	blackkiwibnb@gmail.com Host: Sasha
Dockside Accommodation 22 Sumner Road, Lyttelton	021 152 3083	lytteltonaccommodation.co.nz
Governors Bay Bed and Breakfast Governors Bay Road, Governors Bay	03 329 9727	gbbedandbreakfast.co.nz Host: Eva
Governors Bay Hotel 52 Main Road, Governors Bay	03 329 9433 021 611 820	governorsbayhotel.co.nz Host: Jeremy and Clare
Harbour Lodge 1 Selwyn Road, Lyttelton	027 242 7886	info@harbourlodge.co.nz www.harbourlodge.co.nz
Little River Camping Ground 287 Okuti Valley, Little River	03 325 1014 021 611 820	littlerivercampground.co.nz Host: Marcus
Orton Bradley Park Camper Van Stay Marine Drive, Charteris Bay	03 329 4730	ortonbradley.co.nz Host: Ian
The Rookery 9 Ross Terrace, Lyttelton	03 328 8038	therookery.co.nz Host: Rene and Angus

EAT, DRINK, DINE

Dark Star Ale House and Cafe Waipapa Avenue diamond Harbour	03 329 3245	darkstarbrewing@yahoo.com Host: Donna and Martin
Fishermans Wharf Norwich Quay, Lyttelton	03 328 7530	www.fishermanswharf.co.nz Host: PJ
Lyttelton Top Club 21 Dublin Street, Lyttelton	03 328 8740	www.lytteltontopclub.co.nz
Roots Restaurant 8 London Street, Lyttelton	03 328 7658	rootsrestaurant.co.nz Meet: Giulio and Christy

THINGS TO DO

Black Cat Cruises Quail Island Adventure B-Jetty, Lyttelton Wharf [Below Oxford Street]	03 328 9078 0800 436 574	blackcat.co.nz
Christchurch Gondola 10 Bridle path Road, Heathcote valley	03 384 0310	welcomeaboard.co.nz
International Antarctic Centre 38 Orchard Road, Christchurch Airport	0508 736 4846	iceberg.co.nz
Jack Tar Sailing Dampier Bay Marina, Lyttelton	03 389 9259 027 435 5239	jacktarsailing.co.nz Skipper: Mike Rossouw
Orton Bradley Park Marine Drive, Charteris Bay	03 329 4730	ortonbradley.co.nz
Naval Point Club Our Ocean Water Sports Club	03 328 7029 027 379 9212	www.navalpoint.co.nz

LOCAL EXPORTS

Lyttelsoft Specialising in Accounting Software	03 328 8671	lyttelsoft.co.nz Meet: Penny Mercer
Real Homes New Zealand Limited PO Box 94, Lyttelton	03 390 3393 021 224 6637	realhomes.co.nz Real Estate Agent: Lynnette Baird
Saunders & Co 1063 Ferry Road, Ferrymead	03 940 2435 022 133 6963	saunders.co.nz
Furnishscene Specialising in curtains, blinds, shutters, interior design and color consultancy. Meet Laura, Karen and Bridget	03 977 4630	furnishscene.co.nz
Peter O'Brien Plastering Limited 153 Port Hills Road.	384 2574 027 221 4066	pmobrien@snap.net.nz

HEALTH, BEAUTY, FITNESS

Christchurch Yoga Scout Den, Charlotte Quay, Lyttelton	021 071 0336	Christchurchyoga.co.nz Instructor: Rebecca Boot
Honey Comb 34 London Street Lyttelton	03 328 8859	honeycombhair@extra.co.nz or see our facebook page

Love to dance?

HeartDance

Guided warm up then let yourself move!

FRIDAYS 4 & 18 AUGUST

Trinity Hall Lyttelton Rec Centre

7.30- 9pm

\$15

ffi Contct Jan : fb heartdance

OpenFloor International

