

LYTTELTON REVIEW

September 2017 • Issue: 196

PURAU • DIAMOND HARBOUR • CHURCH BAY • CHARTERIS BAY • GOVERNORS BAY • RAPAKI • CASS BAY • CORSAIR BAY • LYTTELTON



IN THIS EDITION:

- Community Garden - Restart
- Timeball site
- Off-grid for a day

Next Issue print date: Issue 197, 19th September 2017.

Content Deadline: 5pm 15th September 2017.

Review Creators

Lyttelton Harbour Review is a 100% voluntary community newsletter initiative developed after the February 2011 earthquake. It's a Lyttelton Harbour Information Centre initiative produced by Chairperson Wendy Everingham and Committee Member Jenny-Lee Love.

The objective of the Lyttelton Harbour Review is to help keep local residents informed with what is going on in the wider Lyttelton Harbour community. Of course the success of the Lyttelton Harbour Review could not be possible without the ongoing support and enthusiasm from the wider community.

A big thank you goes out to everyone who sends information; is willing to be interviewed or lets us know what might be happening in the neighbourhood. The Lyttelton Harbour Review project would not be possible without you all.

If you have an event, topic, sport announcement, fundraiser or cause that you would like to share with the harbour community, then Wendy or Jenny-Lee would love to hear from you:

Wendy Everingham
Office: 328 9093
Mobile: 021 047 6144
Email: infocentre@lyttelton.net.nz
Content Deadline: 5pm Friday

Jenny-Lee Love
Email: lytteltonreview328@gmail.com

Subscribe to the Review:

Email either Wendy or Jenny-Lee with the words "Subscribe Me" in the subject line and the Lyttelton Harbour Review will be delivered to your inbox.

In 2017 the Lyttelton Harbour Review is produced fortnightly. Any important information between times will be emailed as a Lyttel Broadcast if necessary.

Hard Copies of the Review are available at:

Council Service Centre
Fat Tony's
Lyttelton Bakery
Leslies Bookshop
Lyttelton Community House
Lyttelton Harbour Information Centre
Lyttelton Library
Lyttelton Top Club

Back Copies Available to Download:
www.lytteltonharbour.info



Review Cover Photo

Our idea to ask people to share their great photos for the Review now has McConnell Dowell Constructors Ltd sharing some of their fabulous shots from the re-build of Sumner Road. Enjoy.

Random Acts of Kindness

Pay it Forward with Random Acts of Kindness. 1st September is Random Acts of Kindness Day. We are building a better community by paying it forward with acts of service. Big or small, it all counts. Like us on facebook [fb.com/payitforward.kiwi](https://www.facebook.com/payitforward.kiwi) and tell your story of how you have paid it forward today.

Ferrymead Heritage Park

Has half price entry to September 2017 Prices: family day pass options \$15/\$25, adults \$10, seniors \$7.50, children \$5 and under fives free. New community services cardholder rates. First Sunday of the month unlimited steam train rides: family day pass options \$22.50/\$30, adults \$15, seniors, \$12.50, children \$7.50, and under fives free. A visit to the Community Chapel Café is admission free. New tour group and venue hire options with Devonshire Tea in one of the heritage homes or movies in the heritage theatre. www.ferrymead.org.nz

Naval Point

Season Opening Day Saturday 23rd September 2017

The 2017-18 sailing season will open at Naval Point Club on Saturday 23rd September with racing commencing at 13.30, full details of the days programme will be notified shortly. You will be able to collect your seasons handbook and sticker from the wardroom in the club house from 10am, just pop in and see either Sarah or Marina. You can also pay your membership fees if you haven't done so at this point.

The wardroom bar will be open at 3pm where all members and families can join in the celebrations to open the season, a light super will be provided. We look forward to seeing you all.

Zumba Gold® Fitness

Tuesday: 1.30pm – 2.30pm, Lyttelton Recreation Centre, Lyttelton (25 Winchester Street).

Friday: 11.30am – 12.30pm, Lyttelton Recreation Centre, Lyttelton (25 Winchester Street)

Lyttelton Community House (LCH) meals programme

This service provides five cooked meals a week. On Monday & Wednesday recipients will receive two hot meals (to cover Mon/Tues & Wed/Thurs). On Friday one hot meal plus a dessert is delivered. These meals are delivered between approximately 3-4pm, and cost \$8.50 each. If you are interested in this service, please get in touch with Hannah at hannah@lytteltoncommunityhouse.org.nz

Lyttelton Sit / Stand & Be Fit Class - Tai Chi / Qi Gong

A chance to get out of the house and warm up in an easy to learn social setting. Increase your flexibility, balance and coordination whilst healing and relaxing your body. Classes begin on Monday 7 August from 11am – 12pm at the Trinity Hall, Lyttelton Recreation Centre, 25 Winchester Street. The cost is \$6 per class. For further details contact Geraldine 027-644-4455

Advertising in the Review

Since the inception of the Lyttelton Review we have been very generous with advertising. Any one off advertisements for businesses have generally been published free. Advertisers are encouraged to make a donation to our volunteer organisation.

To be a permanently listed business in the directory and have articles written about your business we have a yearly membership fee of \$165 including GST. If you would like to have a yearly listing please contact us infocentre@lyttelton.net.nz and we will forward our membership application.

Cultural Awareness and The Treaty of Waitangi 4 October

Increase your understanding of how the Treaty is relevant to your workplace. Introductory/refresher level with an experienced tutor and positive learning environment. Cost \$50. When: Wednesday 4 October 2017, 1-5pm Where: Quaker Centre, Corner Ferry Road and Nursery Road Enquiries: Cathy Sweet at 027 256 8908 or csweet@xtra.co.nz

Banks Peninsula Community Board

Want to Connect? We are here to help our community. If you need to contact us, please use our form: <https://ccc.govt.nz/contact-us/contact-us-form>

If your enquiry is urgent, please call us on 03 941 8999 or 0800 800 169(24 hours a day).

If you want to report a problem, please see: <https://ccc.govt.nz/report>

Or you can use our Snap Send Solve smartphone app to help make reporting issues easy. Simply download the app onto your phone.

For more information, go to: <https://ccc.govt.nz/report/snap-send-solve/>

Face to Face:

The next public meetings of the Banks Peninsula Community Board:

Monday, 11 September 2017 at 1pm

Expected end: Monday, 11 September 2017 at 4pm
Location: Lyttelton Boardroom

Monday, 25 September 2017 at 1pm

Expected end: Monday, 25 September 2017 at 2.30pm
Location: Lyttelton Boardroom

Monday, 9 October 2017 at 1pm

Expected end: Monday, 9 October 2017 at 4pm
Location: Akaroa Sports Complex, Akaroa Recreation Ground, 28 Rue Jolie, Akaroa

Citizens Advice Bureau

Is open at The Loft Eastgate Mall on Tuesdays

Citizens Advice Bureau (CAB) operates a satellite service at The Loft in Eastgate mall every Tuesday from 11am- 2pm. There is a meet and greet desk in the Linwood Library, where clients can informally meet our volunteers and have a chat. For those people with sensitive or difficult issues needing privacy, Citizens Advice has an interview room in The Loft.

Since CAB has opened we have dealt with a wide range of questions from simple problems, right through to complex difficult situations. Some of the topics we have helped people with include: mental health, access to advocacy support with WINZ, tenancy, neighbourhood disputes and accessing food banks. There's heaps of great information to help on our website www.cab.org.nz, or call 0800 FOR CAB (0800 367 222) and we can help you work through your options.

Project Lyttelton Annual Report 2017

Project Lyttelton is a non-profit grassroots organisation committed to building sustainable, connected community. We aim to "be the change we wish to see in the world."

Through a range of innovative projects, PL is harnessing the power of community and fostering hope and inspiration to create a collective future. Our values-based approach is inclusive and participative - we recognise all people have intrinsic value.

Some of our projects include; supporting local food production, minimising waste and creating ways to re-use, reduce and recycle, creating opportunities for people to come together to play, share information and skills, and the initiatives continue grow!

For a summary of the years activities take a look at their Annual Report on the link below.

<http://www.lyttelton.net.nz/images/project-lyttelton/Annual-Report-2016-17-Project-Lyttelton.pdf>

Lyttelton Information Centre

Did you know we are run entirely by volunteers? Our current team consists of:

7 board members, 1 art curator, 1 manager, 16 customer service helpers and 1 Review writer.

Semi-furnished house available in Lyttelton

House with 3 large bedrooms, one bathroom and separate toilet. On the sunny East side of Lyttelton. Sunny and warm with two heat pumps, gas fire, double glazing and insulated. Semi-Furnished - has a queen bed, table and chairs, coffee tables, sky dish etc. Incredible views as all the house is on an upstairs level. Large sunny deck. Beautiful garden and large flat recreational area with amazing views. It has steps. Suit a couple, or a small family. No smokers and no pets thank you. \$470 per week.

Phone Michelle 3288020 or 0274160625

Lyttelton Review Statistics

The Information Centre recently had its AGM. Here are some interesting facts about the Lyttelton Review.

In this financial year there have been 24 published editions. On average there have been 1040 direct email subscribers a drop of 10 since last year.

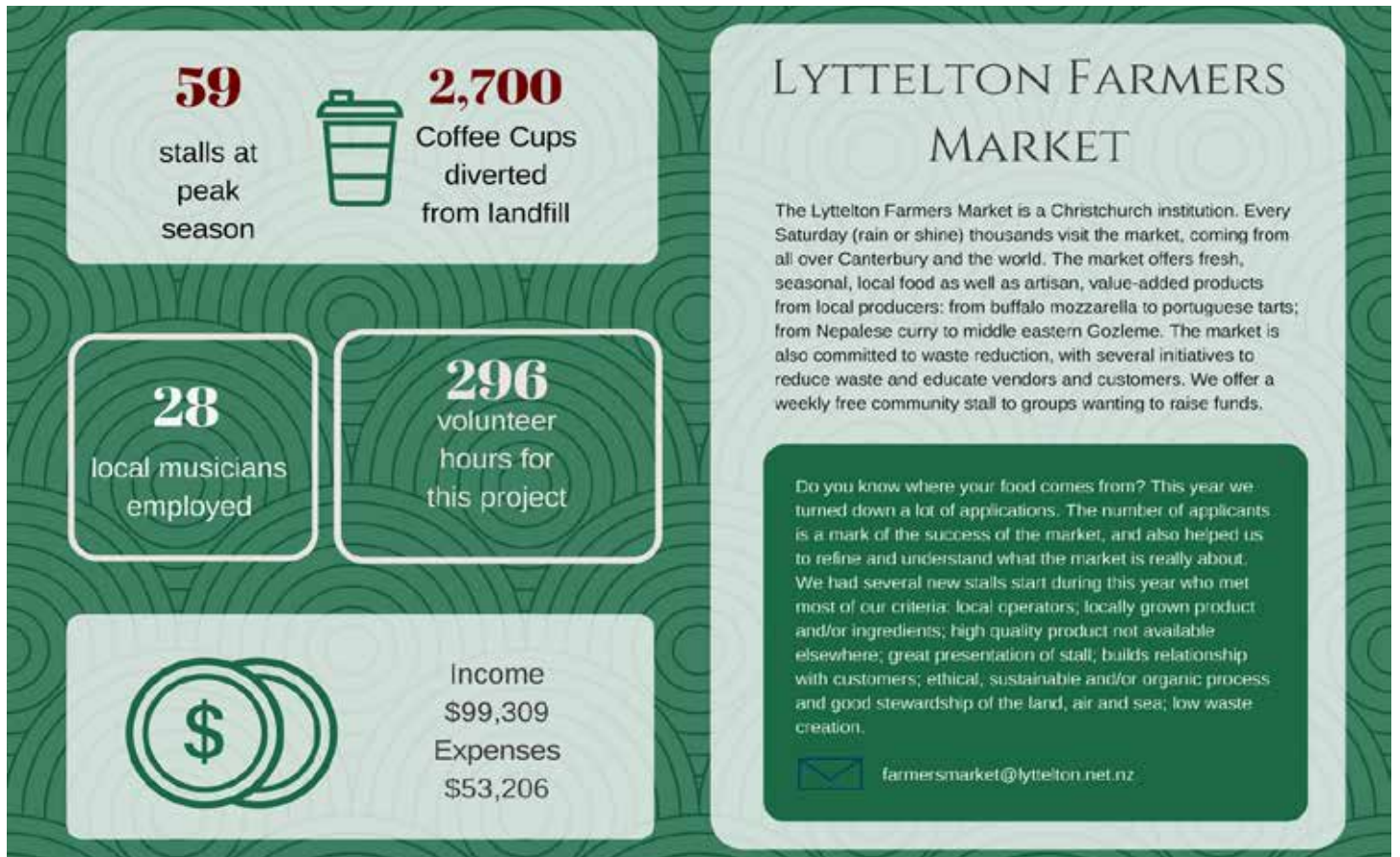
We have printed 160 hard copies per edition an increase of 80 on last year. (This is thanks to a generous grant from the Banks Peninsula Community Board via Strengthening Communities Funding). Our Facebook likes have risen to over 600 from 471. ISSUU readership went from 1533 to 3599 over the period. Our readership comes from New Zealand, Australia, USA, Spain, Cook Islands.

Thank you to our Supporters

The Lyttelton Information and Resource Centre Trust have been supported in 2016/17 financially by: Christchurch City Council, Rata Foundation, ACTIS Community Grants and Memberships. Your generosity enables this community to maintain a visitor and local information Centre and to provide regular community information to the wider public.

Room for Rental

Beautiful double room in Historic Villa in Lyttelton available. Short term or relatives visiting? This would be perfect. Comfortable, clean, warm and peaceful place to come and relax or live. Please contact Janette on 021 252 1256



“Honest John, Purveyor to the Discerning”.



Born in Holitika on 9 November 1946 John Francis Fitzgerald was the fifth of 14 children born to Moira and Jack Fitzgerald. Jack being a railwayman was inevitably posted to Lyttelton in the 1950s

where the large family moved into Cressy Terrace. Between going to school in Lyttelton's St Joseph's Primary and Christchurch's Xavier's Boys College John picked up a paper round which had a double effect on his life.

The first was his meeting with a young Susan Fosbender granddaughter of Willy Miller the local Press Co's manager, and the second was as part of his paper round in Lyttelton the need to deliver the papers to the multitude of ships in the port. Susan and ships became the two central themes in John's life from this point forwards, firstly he married Susan in 1966 whilst holding down a job at the NZ Motor Corporation. Then just a couple of years later his father in law Leslie Fosbender hired him to help him run the world famous J. Voyce & Co Ships Provedores, and it was here that his career took off and he became known as "Honest John, Purveyor to the Discerning".

John and Sue initially lived in a newly built home in Aranui with daughters Lisa and Meagan before moving back through the tunnel in 1975 to 18 London Street. The social life was just too hectic for a young family on London Street and so five years later the family moved up the hill a bit to 27 Sumner Road, The Manse, and the four of them were joined by a son and brother in the form of Lewis.

John's purveying talents extended into hospitality when Susan opened The Deluxe Café and Bar in the late 1980's, a venue where almost every young person in Lyttelton had a job at some stage.

John was not only a businessman but in his hayday a sportsman too. When his daughters were young he was an active member of the Canterbury Rowing Club

which saw him take the family all over the South Island to various regattas. He also loved skiing...fast. But, John's main sporting passion was golf. Not only did he have a handicap to envy but he always won 'best dressed'.

John had a passion for the Lyttelton community. He was a member of the Lyttelton Round Table for many years, coached junior cricket, worked hard on the St Josephs Parish Council and in his later years was on the committee of the Order of St John Ambulance, Lyttelton and very active with Lyttelton Community House.

He was not only "Honest John, the Mayor of Sumner Road", that crazy guy who walked his sheep and goat from Sumner Road to London Street and always stopped with them for a pint, but a pillar of the Lyttelton community. Always driving a Ford Falcon, always with a dog, always proud of his children and granddaughters.

In the last year or so John's health deteriorated. Something that was not helped by the fact that his heart had been broken by the 2011 earthquake and the loss of his beloved home, 27 Sumner Road.

In July John was admitted to hospital with unmanageable pain and dramatic weight loss and two days later was diagnosed with aggressive and untreatable cancer. John passed away very peacefully at Edith Cavill House in the early hours of August 6th surrounded by family. Fittingly John's coffin was built by friend and fellow local Chris Morrison with help from Lewis, from recycled wood taken from many of Lyttelton's old buildings including his home.

John is survived by his wife Susan, children Lisa & Chris, Meagan & Marcus, Lewis & Ella and granddaughters Stella, Sofia, Mea, Niamh, Saskia, Lola and Cleo.

Tribute Meagan Fitzgerald-Hutchinson

Editor: *What a character our town has lost. Always the story teller and the man in and around London Street!. Quirky with a great sense of humor and always a comment about something that was happening locally. I enjoyed getting to know John at our change of shift at Volcano Radio and previous to that when running the Festival of Lights. Thank you John Fitzgerald for being you and adding color, vitality and diversity to this wee town.*

Community Garden - Restart

So, it's time to move on, to move forward and to get the garden growing again. Just as winter turns to spring and the mood changes, here in the community garden we are keen to take the learnings from the last few seasons and grow again – not just fruit and vegetables but grow interest, grow volunteers, grow knowledge, grow our community.

After a turbulent few years whilst not complete, although the true definition of a garden is surely one of continuous change, the community garden now has amazing looking raised beds to begin the cycle of growing, cooking and learning with its community. Now we just need you. Have you been up to the garden recently? Would you like to know more, even to volunteer.

The community garden is open every Wednesday and everyone is welcome to come up and find out what's happening or check on Facebook: Lyttelton Community Garden for details of what's going on. This season we are looking at having a topic of interest each week at 10.30am to demonstrate or discuss something directly related to what's happening in the garden, be it raising seeds, how to look after chickens, what to plant, harvesting carrots..... The sessions are designed to be between 10 minutes and an hour depending on what we've up to – the garden will let us know the topic, you can find out on [www.lyttelton.net.nz/Lyttelton Community Garden](http://www.lyttelton.net.nz/Lyttelton%20Community%20Garden) and Facebook then do the same at home.

As the season progresses we will be looking to run a second session to look at cooking produce

from the garden and preparing a shared share a meal. So, come up and learn how to plant seeds, volunteer in the garden for an hour and then come and do some cooking – cooking not based on repeating recipes but looking at the garden and seeing what can be made simply made based on what's available. Linking with the veggie bag and the Harbour Co-op we hope to get some suggestion circulating on what you can do with a cabbage four nights in a row!!!

We look forward to getting students from the local school and kindergartens back in the garden, inviting business up – come and hold your monthly meeting in the garden for a change – tea and coffee available, but more importantly a great location and the best view – interested?? We look forward to working with other community organisations both in Lyttelton and wider a field and getting them involved again in the garden. If you would like your own pizza event in the garden, we have the pizza one available (cost and training involved) or just bring your children up for a picnic and too feed the chickens as it gets warmer.

Just get in touch – phone 328 9243, email office@lyttelton.net.nz

Lyttelton Community Garden Oxford Street entrance up the laneway between the swimming pool and playground or St David Street through the double wire gates. This is a working garden so take care.

Article Lyttelton Community Garden







Light, camera and action at the Timeball site!

Welcome to the latest update on the Timeball rebuild. They say seeing is believing – and with a time lapse camera installed at the Timeball site in Lyttelton you can watch from the comfort of your home, office or where ever you may be, the rebuild of the Timeball tower as the Timeball is returned to the port town.

To view progress please visit <http://lytteltontimeball.projectstory.co.nz/>

Work on the \$3 million project began in July. By the end of April 2018 the Timeball tower and Timeball itself will once again overlook the harbour and township and the Timeball will drop at 1pm each day.

Heritage New Zealand and Hawkins Construction are sharing costs for the time lapse camera (with images loaded the next day) that captures progress of the build every 10 minutes from 6.30am to 5.30pm during work hours. The project is being overseen by the team at Project Story.

Hawkins Construction is the main contractor for the Timeball project, working alongside The Building Intelligence Group (project manager), Possenniskie Consultants Limited (quantity surveyor), Dave Pearson Architects (architect), Ruamoko Solutions (structural engineer), Geotech Consulting (geotech engineer), Stark Engineers (Timeball, mast and flagpole repairers) and Bosworth Stone Limited (stonemason).

Heritage New Zealand would particularly like to thank key donors Landmark Inc, the Lottery Grants Board, Stout Trust and Parkinson Memorial Park Trust (through Perpetual Guardian), Holcim and the Mainland Foundation. There has also been fantastic support financially and emotionally from the Lyttelton, and wider, community.

We'll keep you updated as the work progresses!

Article Heritage New Zealand.

Lyttelton to go off-grid for a day

Local electricity lines company Orion is installing two huge generators so the lights don't go out in Lyttelton while it undertakes a major project to improve the reliability of the town's electricity supply.

Transported from QE11 Park where they supported power service to the east of the city after the earthquakes, the two 12 x 7 metre double container-sized generators are being installed in the Port, with the support of the Lyttelton Port Company.

The generators will power Lyttelton, Cass Bay and Corsair Bay during the eight hours the town needs to be off-grid from 8:30am to 4:30pm on 13 September while the upgrade work is completed.

Orion Chief Executive, Rob Jamieson, said, "These generators are two of the largest in the country, and they proved their worth after the earthquakes



Orion Generator being lifted onto LPC



Orion New poles for 11kv line Poles

powering the east from QE11, where they are no longer needed. It is great to be able to set them to work helping out another community.

"The people of Lyttelton have had to put up with more than their fair share of power cuts in the past, and this project will mean fewer outages, and we'll be able to get the power back on more quickly if needs be.

"This is a unique chance for us to use specialist equipment to generate enough power to keep a whole community running for a day."

The electricity upgrade project involves increasing the distance between the termination poles at the Heathcote and Lyttelton ends of the overhead power lines that service the community.

Lyttelton's power supply comes from the Heathcote zone substation and is fed on two overhead lines on one common set of poles that traverse the Port Hills. As a consequence of the proximity of the poles, the risk of outages caused by environment-related impacts from wind, debris, and wildlife is compounded.

Currently if there is a fault on one line, often power has to be cut to both lines to repair the fault, because the lines are placed too closely together and pose a significant health and safety risk to repair crews. During any future outages, power will be more quickly restored as one line supplying the area can be kept on while Orion works to repair the other.

Orion is also bringing in additional, back-up generators to ensure consistent power for the town's central business area.

Some interesting facts:

Two generators brought in from QE2 Park in Burwood.

Each generator is:

57000 kg

Provides 2000 kW of power

78 Litre V16 engine

11,000 V

12.1m long, 7m high.

Engine and Generator USA made by Caterpillar, supplied by Goughs

Special quiet enclosures made in Auckland

Full remote monitoring

Article Orion

WHAT IS THE GIFT YOU ARE CARRYING
INTO THE HEART OF THE VILLAGE?

GATHERING MOMENTUM IN CHRISTCHURCH

A workshop for men to become more resourced to work with emotions.

We will use music as medicine to move and re inhabit our bodies, expand our comfort zones to be real and available in more situations. We are building a community of men who are strong and caring, able to stand for what matters.

Saturday 23rd September @ St Saviours Church, Lyttleton - 10am to 6pm
Tickets \$120 available from openingmindsnz.eventbrite.com



About the facilitator - Jaime Howell

Jaime is a co-director at the Rites of Passage Foundation who has spent a decade helping fathers and sons grow and unfold. He has a Masters Degree in Education and has over a fifteen years experience teaching. As a meditation and movement teacher he has studied extensively with Tarchin Hearn who has given him encouragement to teach. Jaime has spent the last three years as a resident practitioner at the Wangapeka Study and Retreat centre. He weaves meditation (stillness) and dance (movement) with a vision to create awake communities.



Our embodied brains are far more capable of recovery/rewiring than we ever imagined; and a cradle of safe, warm responsive relationships provides the support most in tune with our brains inherent development and healing processes....non judgemental, agenda-less presence is the soil in which healing and meaning grow.

Bonnie Badenoch, PhD – How Understanding our Embodied Brains can Support Lives of Hope & Resilience



Book Review Lift Library

Drawdown: *The Most Comprehensive Plan Ever Proposed To Reverse Global Warming*
 Edited by Paul Hawken 2017

This is one of the most important books to arrive in the LIFT Library. Not many books on climate change have a constant tone of positivity – this one does!

When strangers ask me what is in the library, I say something like: “Ways to fix the world”. This book is like a 240-page encyclopedia of 100 ways to “fix the world”, not just the issue of global warming. It echoes many books from many sections of LIFT, including environment, economics, food, and community.

The book (and Youtube clips about it) shows that there are many methods that can achieve various levels of effectiveness in solving the problem of global warming. The information has been gathered by a huge worldwide team that over 3 years “gathered comprehensive lists of climate solutions and winnowed them down to those that had the greatest potential to reduce emissions or sequester carbon from the atmosphere.” ‘Drawdown is that point in time at which greenhouse gases peak and begin to decline on a year-to-year basis.’

The top 80 solutions are divided into broad topics, and then each described in full, including their effectiveness in drawing down of carbon dioxide from the atmosphere by the year 2050, and where possible the net cost and the net savings in US\$. The broad topics are: Energy, Food, Women and Girls, Buildings and Cities, Land Use, Transport, Materials. Then there

is a section of Coming Attractions – inventions and innovations that are close at hand.

One of the aspects I really appreciate is that the solutions described (in easy-to-understand language with fascinating stories and beautiful coloured illustrations) “lead to regenerative economic outcomes that create security, produce jobs, improve health, save money, facilitate mobility, eliminate hunger, prevent pollution, restore soil, clean rivers, and more.”

Many of the top 80 solutions described relate strongly to issues here in New Zealand that can create argument and frustration – such as Farmland Irrigation (#67); Walkable Cities (#54); Trucks (#40); Mass Transit (#37); Silvopasture (#9) (new to me)– “the integration of trees and pasture or forage into a single system for raising livestock, from cattle and sheep to deer and ducks” ; Plant-Rich Diet (#4); Reduced Food Waste (#3).

Wouldn't it be great if our government (whichever, after September 23rd !) got into action on the policies so strongly supported in this book – and thus made a genuine difference to our contribution to worldwide efforts to contain global warming, as well as helping our society and our economy into a better state of health.

Article LIFT Library

EVENTS

Events

WEDNESDAY SEPTEMBER 6TH

Fat Tony's 5-7pm
Happy Hour

Lyttelton Community Garden 10am
Workshops

Wunder Bar 8pm
Al Park and his pals

THURSDAY SEPTEMBER 7TH

Appetite for Life 10am
St John's Lyttelton

Fat Tony's 5-7pm
Happy Hour

Lyttelton Club 5-6 7-8pm
Happy Hour

Recreation Centre 3.30-5.30pm
Youth Sessions

FRIDAY SEPTEMBER 8TH

Fat Tony's 5-7pm
Happy Hour

Lyttelton Club 4-6pm
Happy Hour

Wunder Bar 8.30pm
Wonder Show

SATURDAY SEPTEMBER 9TH

Fat Tony's 5-7pm
Happy Hour

Lyttelton Arts Factory 7.30pm
Quizz Night

Lyttelton Farmers Market
12th Birthday

Naval Point Club 9-5.30pm
Learn to Sail

SUNDAY SEPTEMBER 10TH

Fat Tony's 5-7pm
Happy Hour

Freemans 3.30-6.30pm
Carmel Courtney and Friends

Recreation Centre 3-5pm
Youth Sessions

TUESDAY SEPTEMBER 12TH

Lyttelton Club 7pm
Evening Housie

Tribal Diva Belly Dance 6.30pm

Wunder Bar 7.30pm
Open mic and showcase



WEDNESDAY SEPTEMBER 13TH

Fat Tony's 5-7pm
Happy Hour

Lyttelton Community Garden 10am
Workshops

Wunder Bar 8pm
Al Park and his pals

THURSDAY SEPTEMBER 14TH

Appetite for Life 10am
St John's Lyttelton

Fat Tony's 5-7pm
Happy Hour

Lyttelton Club 5-6 7-8pm
Happy Hour

Recreation Centre 3.30-5.30pm
Youth Sessions

Wunder Bar
This Way North

FRIDAY SEPTEMBER 15TH

Fat Tony's 5-7pm
Happy Hour

Lyttelton Arts Factory 7.30pm
Garage Sale Fashion Show

Lyttelton Club 4-6pm
Happy Hour

SATURDAY SEPTEMBER 16TH

Fat Tony's 5-7pm
Happy Hour

Lyttelton Arts Factory 7pm
Freedom of Flight

Naval Point Club 9-5.30pm
Learn to Sail

Wunder Bar 8.30pm
The Nudge – Dark Arts Album Release Tour

SUNDAY SEPTEMBER 17TH

Fat Tony's 5-7pm
Happy Hour

Freemans 3.30-6.30pm
Carmel Courtney and Friends

Recreation Centre 3-5pm
Youth Sessions



A LYTTTEL LOVED FASHION SHOW

An evening of Clothes & Beauty

FRIDAY 15th SEPTEMBER

Catwalk Show • Bargain Clothes • Beauty Stalls • Food & Bar

from 7:30pm @ LAF

\$10 tickets available from the School office and The Garage Sale

Fundraiser for Lyttelton Primary School and The Garage Sale



Work Notice: Lyttelton to Cass Bay, power upgrade

What	Upgrade to the overhead lines that power Lyttelton
Where	Lyttelton, Corsair Bay, Cass Bay will be placed on alternative generation
When	Wednesday 13 September, from 8.30am until 4.30pm

What are we doing?

Orion is in the process of upgrading the power network servicing Lyttelton, Corsair Bay and Cass Bay to improve resilience and reliability for the area. Lyttelton's power supply comes from the Heathcote substation and is fed on two overhead lines on one common set of poles traversing the Port Hills. The reliability of these lines has been an issue in the past due to a combination of exposure to the environment and the proximity of the lines.

Essentially, our upgrade will involve spacing the lines on separate poles at the junction points in Heathcote and Lyttelton, so that when a fault occurs on one line, it can be safely repaired while the other line keeps the network operational.

How will this affect me?

To complete the upgrade and switch the lines onto their new poles, the mains power will need to be switched off in Lyttelton, Corsair Bay and Cass Bay for around eight hours, between 8.30am and 4.30pm, on Wednesday 13 September. Please note, our contingency date is Wednesday 20 September.

Orion is committed to keeping the township of Lyttelton and the adjacent bays operational. With the assistance of the Lyttelton Port Company, two container sized, 40ft 2500 kVA generators will be relocated to Lyttelton to continue to supply the more than 500 businesses, essential services, education centres and residents in this community with an alternative power supply for the day.

Generated power can be less stable than mains power. We ask the community to please bear with us if the supply fluctuates during the day, and conserve power where possible to help us remain within the capacity of our generators. Please turn over to find tips on how you can lower your consumption.

There will still be one brief outage around 4.30pm on Wednesday 13 September to switch the community over on to the upgraded network.

How can I get more information?

If you would like to be emailed more information as it becomes available regarding this upgrade, please email us at info@oriongroup.co.nz with *Lyttelton updates* in the subject line. If there is anything we need to be made aware of, such as your reliance on power for medical or other important reasons, please email us or call 03 363 9898 to be put through to our **Contact Centre** which operates 24/7.

See the **Latest News** section on Orion's website for up to date information about this upgrade project, delays or change of dates oriongroup.co.nz



Above: In Heathcote, one set of poles will soon become two

Orion

Please lower your power consumption

We would like the whole community to benefit from the alternative generation on Wednesday 13 September, but to ensure this is possible there's a few things you can do to help not just us out, but also your neighbours.

- Charge cell phones and any battery powered devices the night before.
- Switch off unused appliances at the wall
- Turn off lights where possible
- Take shorter showers, and if possible the night before instead
- Avoid doing tasks like using a dryer or washing machine, plan to do this another day that week
- Turn your heaters off where you don't need them
- Turn heated towel rails off
- **Businesses:** Please plan your business activities around this date, undertaking tasks which require heavy power consumption could put the community's power supply at risk.



Above: One of the two 40ft, 2500 kVA generators being temporarily relocated to the Lyttelton Port Company to supply generation during the upgrade

Be prepared

In the unlikely event that the generation supply is overused and there is an outage during the day, we will work very hard to get everyone's lights back on. Please take some precautions in the case of an outage, and **remember there will be one brief outage around 4.30pm** to transfer the community on to the new upgraded network.

- Make sure any battery powered devices that you need, such as laptops and cell phones are charged the night before
- Know where the manual release lever of your electric garage door is and how to operate it
- Purchase ice to help keep food cold during a temporary power outage
- If you need to use your car to re-charge devices, do NOT keep the car running in a garage, partially enclosed space, or close to a home
- If you rely on anything that is power dependant like a medical device, determine a backup plan, and contact your electricity retailer for more information
- Only use flashlights for emergency lighting, candles can cause fires
- During an outage, turn off or disconnect appliances in case of a momentary power 'surge' that can damage computers or other devices

Thank you!

We understand the power supply to Lyttelton hasn't been as reliable as it needs to be. This project will provide a more resilient power supply to Lyttelton and fewer outages in the future. This upgrade is part of a long-term programme of work to ensure greater surety of service to Lyttelton and the adjacent bays.

Contact us:

Phone: 03 363 9898
Email: info@oriongroup.co.nz
Website: oriongroup.co.nz
Address: 565 Wairakei Road, PO Box 13896, Christchurch, 8141

Community Activities in and around the Harbour this Week

MONDAY

Community Choir

7.30pm Union Chapel, Winchester Street, Lyttelton.
All welcome. Jillie 021 152 8068

Diamond Harbour Yoga

6.30pm - 8pm
General Class, Diamond Harbour Rugby Rooms

Harbour Yoga Vinyasa

9.15am-10.30am. 021 882 403
General Class, Trinity Hall

Lyttelton Health Qigong for Seniors

11am – Noon
Lyttelton Recreation Centre \$5
Geraldine Parkes 03 328 7284 or 027 644 4455

TUESDAY

Community House

Shared Lunch 12.00pm 7 Dublin Street
Make new friends

Diamond Harbour Yoga

6am - 7am
Early Bird Class
Diamond Harbour Stage Rooms

Lyttelton Library Storytimes

11.00-11.30am

Lyttelton Yoga

9.30am - 10.45am
6.30pm - 8pm, Scouts Den Lyttelton
Contact Rebecca Boot 021 071 0336

Diamond Harbour Bridge Club

1.20pm for 1.30pm start
Diamond Harbour Football Club Rooms. \$4 table
For more information call 329 4868 or 329 4149

Lyttelton St John Youth Division

6.00pm St John Ambulance Station
52 London St, Lyttelton

St Josephs Worker Catholic Church

9am Mass 21 Exeter Street, Lyttelton
All Welcome More information call 384 1600

WEDNESDAY

Diamond Harbour Bridge Club

Bowling Club Rooms. All welcome
6.40pm for a 6.50 start
Partner finder - Carolyn Craw. Ph 329 4684

Diamond Harbour Singers

7.30 - 9.00pm
Every Wednesday in Stage Room of Community
Hall. All welcome. Contact Margie 329 3331

Diamond Harbour Yoga

6am - 7am
Early Bird Class
Diamond Harbour Stage Rooms

Lyttelton Cubs

6.30pm
Contact Mark Brabyn 027 281 6180

Lyttelton Garage Sale

10.30am 54a Oxford Street, Lyttelton
Second Hand Bargains and more.

Lyttelton Harbour Fruit and Vegetable Collective

Trading between 12.30 and 2.45pm at the Lyttelton
Information Centre 20 Oxford Street Lyttelton
Contact Jill Larking for more info 027 237 4960

Lyttelton Library Wednesdays Knit and Yarn

10.00-12.00pm

Lyttelton Play Group

Lyttelton Playgroup
At Kidsfirst Lyttelton
12,30pm- 2.30pm
33 Winchester St Lyttelton
Call 03 328 8689 for more information

Harbour Yoga Vinyasa

6pm-7.15pm. 021 882 403
Gentle Class, Trinity Hall

THURSDAY

Community House Flat Walking Group.

10am
Contact Hannah Sylvester. Ph: 741 1427

Diamond Harbour Yoga

6am - 7am Early Bird Class
Diamond Harbour Stage Rooms

Governors Bay Volunteer Fire Brigade

7.00pm Governors Bay Fire Station
Weekly Training, New Members Welcome

Lyttelton Garage Sale

10.30am 54a Oxford Street, Lyttelton
Second Hand Bargains and more.

Lyttelton Volunteer Fire Brigade

7.00pm Lyttelton Fire Station
Weekly Training, New Members Welcome

FRIDAY

Diamond Harbour Yoga

6am - 7am
Gentle Class
Diamond Harbour Rugby Rooms

Community Activities in and around the Harbour this Month

Lyttelton Garage Sale

10.30am 54a Oxford Street,
Lyttelton Second Hand Bargains and more.

Lyttelton Library Fridays Babytimes

10.30-11.00am

Lyttelton Yoga

9.30am - 10.45am

Scouts Den Lyttelton

Contact Rebecca Boot 021 071 0336

SATURDAY

Lyttelton Farmers Market

10.00am London Street,
Lyttelton Fresh produce, Live Music, Buskers and More

Lyttelton Garage Sale

10.00am 54a Oxford Street, Lyttelton
Second Hand Bargains and more.

Lyttelton Harbour Bazaar Market

10.00am No 6 London St. Artists, Bric a Brac and More

SUNDAY

St Saviour's at Holy Trinity

17 Winchester Street

10.00am Service with Holy Communion

2nd Sunday of every month only

Port Hills Uniting Church Service

10am Sunday Worship. All Welcome

GROUPS

Banks Peninsula Community Board

1pm Second Monday Each Month

Meetings Open to the Public

Bay Harbour Toastmasters

6.30pm. Every 2nd and 4th Wednesday of the month

Lyttelton Community Board Room, 25 Canterbury St

Contact: Jann Meehan, 021 263 1040

Diamond Harbour Civil Defence

7.00pm Third Wednesday of the month.

Community Church Diamond Harbour

Contact: Wendy Coles 0211541434

Governors Bay Civil Defence

7.00pm Third Wednesday of the month.

Governors Bay Fire Station Contact

Contact: Ian Palmer 3299 160

Lyttelton Harbour Business Association

Networking Meeting 9.30-10.30

Fat Tony's, 17 London St

More Info call 021 027 05450

Lyttelton Lions

7.30pm Second Tuesday Each Month

Lyttelton Community House

Contact: Mary 03 328 8523

Lyttelton Museum Historical Society

Contact Wendy McKay

info@lytteltonmuseum.co.nz

Lyttelton Netball Club

Contact Flo McGregor flomac@xtra.co.nz

Lyttelton Rugby Club

For details visit the club Facebook Page or contact
the club's Rugby Manager

Nathan.mauger@gmail.com 021 111 6069

Little Ship Club Canterbury

We meet on the 3rd Thursday of the month usually
at Naval Point Club Lyttelton from 7.00pm. The club
has regular guest speakers and undertakes a large
range of activities that increase the knowledge and
skills and enjoyment of its members and for the
benefit of yachting generally. All welcome
www.littleshipclubcanterbury.wordpress.com

Lyttelton Time Bank

10-4pm Tuesday to Friday. 20 Oxford St Lyttelton

328 9093 www.lyttelton.net.nz/timebank

Lyttelton Toy Library

Located at the Lyttelton Rec Centre Squash Court
25 Winchester St. Open each fortnight on Saturday
morning 10-12 noon. For more information
see Facebook Lyttelton Toy Library or email
lytteltontoylibrary@gmail.com or call Helen 021 075
4826

Naval Point Old Salts Lunch

The Old Salts Lunch is being held on the 2nd
Tuesday of every 2nd month with the next one being
held next Tuesday, 10th February starting @ 12:00
with 2 course lunch commencing @ 12:45.

Contact Barry Bowater 329 4828 or 0272743520

Narcotics Anonymous Lyttelton Meeting

6:30 Monday Community House. 5 Dublin St.

www.nzna.org

St Joseph the Worker R.C.Church

5.30pm Mass 3rd Sunday of the month. Parish House
21 Exeter Street Lyttelton. Ph: 384 1600

thelytteldirectory

2017 your call to support local businesses around the harbour

PLACES TO STAY

B@B Settlers Retreat 153 Main Road	021 186 3220 021 144 2979	thackergj@slingshot.co.nz Hosts: John and Gaynor Thacker
Black Kiwi Apartment, Reserve Terrace, Lyttelton	022 0541954	blackkiwibnb@gmail.com Host: Sasha
Dockside Accommodation 22 Sumner Road, Lyttelton	021 152 3083	lytteltonaccommodation.co.nz
Governors Bay Bed and Breakfast Governors Bay Road, Governors Bay	03 329 9727	gbbedandbreakfast.co.nz Host: Eva
Governors Bay Hotel 52 Main Road, Governors Bay	03 329 9433 021 611 820	governorsbayhotel.co.nz Host: Jeremy and Clare
Harbour Lodge 1 Selwyn Road, Lyttelton	027 242 7886	info@harbourlodge.co.nz www.harbourlodge.co.nz
Little River Camping Ground 287 Okuti Valley, Little River	03 325 1014 021 611 820	littlerivercampground.co.nz Host: Marcus
Orton Bradley Park Camper Van Stay Marine Drive, Charteris Bay	03 329 4730	ortonbradley.co.nz Host: Ian
The Rookery 9 Ross Terrace, Lyttelton	03 328 8038	therookery.co.nz Host: Rene and Angus

EAT, DRINK, DINE

Dark Star Ale House and Cafe Waipapa Avenue Diamond Harbour	03 329 3245	darkstarbrewing@yahoo.com Host: Donna and Martin
Fishermans Wharf Norwich Quay, Lyttelton	03 328 7530	www.fishermanswharf.co.nz Host: PJ
Lyttelton Top Club 21 Dublin Street, Lyttelton	03 328 8740	www.lytteltontopclub.co.nz
Roots Restaurant 8 London Street, Lyttelton	03 328 7658	rootsrestaurant.co.nz Meet: Giulio and Christy

thelytteldirectory

2017 your call to support local businesses around the harbour

THINGS TO DO

Black Cat Cruises Quail Island Adventure B-Jetty, Lyttelton Wharf [Below Oxford Street]	03 328 9078 0800 436 574	blackcat.co.nz
Christchurch Gondola 10 Bridle path Road, Heathcote valley	03 384 0310	welcomeaboard.co.nz
International Antarctic Centre 38 Orchard Road, Christchurch Airport	0508 736 4846	iceberg.co.nz
Jack Tar Sailing Dampier Bay Marina, Lyttelton	03 389 9259 027 435 5239	jacktarsailing.co.nz Skipper: Mike Rossouw
Orton Bradley Park Marine Drive, Charteris Bay	03 329 4730	ortonbradley.co.nz
Naval Point Club Our Ocean Water Sports Club	03 328 7029 027 379 9212	www.navalpoint.co.nz

LOCAL EXPORTS

Lyttelsoft Specialising in Accounting Software	03 328 8671	lyttelsoft.co.nz Meet: Penny Mercer
Real Homes New Zealand Limited PO Box 94, Lyttelton	03 390 3393 021 224 6637	realhomes.co.nz Real Estate Agent: Lynnette Baird
Saunders & Co 1063 Ferry Road, Ferrymead	03 940 2435 022 133 6963	saunders.co.nz
Peter O'Brien Plastering Limited 153 Port Hills Road.	384 2574 027 221 4066	pmobrien@snap.net.nz

HEALTH, BEAUTY, FITNESS

Christchurch Yoga Scout Den, Charlotte Quay, Lyttelton	021 071 0336	Christchuryoga.co.nz Instructor: Rebecca Boot
Honey Comb 34 London Street Lyttelton	03 328 8859	honeycombhair@xtra.co.nz or see our facebook page

Krayzie K's Trail Races

17th & 18th November 2017

Orton Bradley Park
Charteris Bay, Christchurch

DistanceS:	100MileS	...	100KMS	...	50KMS	...	25KMS	...	12.5KMS	...	6KMS
Altitude:	7610M	...	4680M	...	2340M	...	1170M	...	580M	...	260M



Trail running events to suit all abilities
from introductory to experienced ultra runners



Open to ages 10 years & over

Single track, stream crossings, farm tracks, hills and valleys

Made up of 12.5km laps ... the 6km is half a lap

The longer the distance the more laps

Return to base every half lap for support,
nourishment and frivolity.

Altitude & Attitude ... a real trail running challenge
that's also fun and achievable

A day for the whole family

Bring a picnic lunch, wade in the stream,
playground for the children, cafe nearby for the adults

Are You Krayzie Enough?

For more information and to Enter go to,

www.krayziekapers.net

Follow us on Facebook,

Krayzie Kapers

A HEARTDANCE WORKSHOP

SPRING AWAKENING

Sat 14 Oct 10-4

Lyttelton Rec Centre. Winchester St

Cost \$60-85...sliding scale

What seeds do you want to germinate in your life? A creative workshop to explore new possibilities, dreams and hopes as we step into spring. Using dance and art we will awaken what is waiting to burst into life!

Jan is an arts therapist and Open Floor Dance teacher

To Book : call Jan 021 285 2552
janjeans@mac.com



PROJECT LYTTELTON'S

Spring - Summer 2017-2018 Events

Wednesdays 10:30am **Workshops at the Lyttelton Community Garden.** Check facebook weekly for workshop details. Examples include seed planting, pricking out, potting up, eating from the garden.

Thursdays 3.30pm – 5.30pm & Sundays 3pm -5pm **Youth Sessions at the Lyttelton Recreation Centre** for Year 7 up. Free. Supervised & managed by parents. Feedback from participants, attendance numbers & the possibility of continuing will be evaluated at the end of the 8 week trial.

September 9th **Farmers Market 12th Birthday “Spring Glamour” market** with entertainment, flowers & cake

September 15th **The Garage Sale Fashion Show** at LAF: a collaboration fundraiser between the Garage Sale & Lyttelton Primary School

October 29th **Strange Bedfellows** collaborative arts showcase at LAF with MC Viktor Kropotski

October 30th – November 20th **21-Day Challenge:** Do something new and different. Take on a challenge to make or break a habit in the area of food, waste, environment or wellbeing.

November 4th - 26th **Banks Peninsula Walking Festival** – walks with expert local guides in beautiful locations around Lyttelton harbour, Akaroa harbour, Little River & the outer bays.

November 5th **Repair Cafe #2** – get help & advice with broken items at the Recreation Centre as a TimeBank trade (or for koha). Electrical repairs, sewing & darning, furniture repairs, computer & technology help.

January-February **Lyttelton SummerFest**, including outdoor film series, Strange Bedfellows, The Creative Sampler & more. Get in touch with us if you would like to include an event in the SummerFest programme.

March **Community-Grown Dinner:** enjoy a dinner together made from the ingredients you have grown and foraged.