

# “lyttelton harbour review”

community news from port lyttelton to port cooper

www.lytteltonharbour.info

22 April 2013  
E89

## She Chocolat Launch Culinary School

Grand Launch Event with Rocco from My Kitchen Rules

Have you heard the most exciting news yet: She Chocolat is launching their Culinary School. The school offers inspiration, creativity, the magic of weaving local ingredients, international flavours and the passion for creating amazing dishes. The team behind the She Chocolat Culinary School is co-owner Oonagh Browne and head chef Mark McCracken.



It is clear that Oonagh's passion is contagious, not just for chocolate but for life. As an artist she is a gifted Chocolatier, creating what are truly unique and divine chocolate creations. Her expertise is wizardry. In fact she is not a Chocolatier but a chocolate alchemist. She crafts weaves and creates with the sacred of all ingredients, chocolate.



Mark is the head chef, and with his Irish accent, talent for simplicity with the wow factor, will create an evening or day event that your taste buds and love of cooking will embrace and leap to a whole new level.

And if that alone is not tempting enough, the team at She Chocolat have managed to arrange for Rocco from My Kitchen Rules to share his cooking secrets, hints and tips—everything from those mouth watering macaroon creations to pasta; and of course you will have every opportunity to sample all the dished Rocco creates too. Be warned though, sessions are filling up real fast, so if you would like to head along, you need to be booking it now:

[www.shechocolat.com/shop/Chocolate+School](http://www.shechocolat.com/shop/Chocolate+School)

Monday 13 MAY	Nic & Rocco's Famous Macaroons
Tuesday 14 MAY	My Kitchen Rules favourites
Wednesday 15 MAY	Desserts for Beginners

And if that is not enough to tempt your taste buds and spur your inner chef into action, take a peek at some of the other Wednesday evening classes, half day courses or two day intensives:

- Half Day Hands on Chocolate Play
- Chocolate for the Soul
- Tampering and Truffle Making
- Decadent and Easy Desserts
- Half Day Savoury Degustation
- Chocolate School for Children
- Chocolate and Savoury
- The Fineness and Art of Seafood

To learn more visit:

[www.shechocolat.com/shop/Chocolate+School](http://www.shechocolat.com/shop/Chocolate+School)



Article and Images: She Chocolat Governors Bay, with thanks



LYTTELTON HARBOUR  
**INFORMATION CENTRE**  
PROVIDING QUALITY LOCAL AND VISITOR INFORMATION



**Professionals**

Kennard Real Estate Limited MREINZ  
[www.kre.co.nz](http://www.kre.co.nz)

# Peninsula Art Auction Success

Community Spirit Raises \$40,000 for Local Schools

The Fifth Peninsula Art Auction has proven to be a spectacular success and a superb example of community spirit in post quake Lyttelton. Committee member Lucie Ozanne says "the committee are thrilled with the events success, the auction has raised approximately \$40,000 for the two schools. It was embraced by so many in the community. We would like to acknowledge all the hard work that has gone in to this event by so many willing volunteers, not to mention the artists themselves, without whom this event would not have been possible, and of course all of our generous sponsors."

The auction provided a much needed platform for local artists to exhibit their works to friends, family and supporters. Artists themselves have faced both personal and professional challenges in post quake Christchurch. Since the earthquakes we have been starved of opportunities to enjoy the visual arts as the art gallery remains closed and the day to day operation of other galleries has suffered. It was great to see the old supermarket site come to life again and for many the first time they had been back in, not this time for a tin of spaghetti or a bag of chips. Works were beautifully displayed around the edges of the space, which was very suited to the event. It was a pleasure to wander from each artwork to the next and be so spoilt for choice.

Visitor numbers were high on both Saturday and Sunday, and the Live Auction event was also well attended. The lemonade stand run by the two schools on both days proved to be very popular. Lyttelton's younger artists from both schools contributed to a spectacular display of Peninsula flora and fauna.

Those that attended the auction on the Sunday night enjoyed an entertaining evening, with good food and wine, and vigorous bidding. There are now many who will be enjoying a new piece of art on their walls or on their bookshelves.

Thanks must go to all involved for giving the Lyttelton Main and Lyttelton West Schools a much needed 'boost' as they face the challenges of the Ministry of Educations proposed merger.

Article: Peninsula Art Auction, Jill Larking, with thanks

Images: Peninsula Art Auction Organisers and Mike Stephenson, with thanks



PENINSULA  
ART AUCTION



LYTTELTON HARBOUR  
**INFORMATION CENTRE**  
PROVIDING QUALITY LOCAL AND VISITOR INFORMATION

65 London Street, Lyttelton 8082  
P: 03 328 9093

E: [infocentre@lyttelton.net.nz](mailto:infocentre@lyttelton.net.nz)  
W: [www.lytteltonharbour.info](http://www.lytteltonharbour.info)

# ANZAC Day Service

London Street Lyttelton

Returned Servicemen and Women are invited to assemble at the corner of London and Oxford Streets and march to the civic square site at 10.00am for the service to commence at 10.15am.

Article: Pete Dawson, RSA - with thanks



## Lyttelton Civic Square

Development Progresses with Locals Contributing

Last Wednesday evening, the Christchurch City Council held another meeting in Lyttelton to gather more feedback and input into the look and feel of the new town square [which is yet to be named by the Lyttelton community]. Local resident Sarah Van der Burch was in attendance, and shares her experience:

While there was some concern in the beginning as to why were being asked again for input, I felt the process had worked relatively well in many ways. They gave us an overview of the elements that came out of the Master Plan and out of the earlier consultation process about the square and then turned us loose in small groups with maps, 'mood' photos, pens, markers and proportionally appropriate design elements like a toilet block [which our group decided was way too big for the site], play areas, Cenotaph, etc and gave us an hour to talk, plan, draw and 'communicate' our ideas for the site.

After we finished all of that work, we then shared our best thinking with the other groups. One thing that certainly seemed clear to me, was the number of similarities that many of the groups came up with – performance space, grass, organic materials, etc. I think a number of people were pleasantly surprised by the consistency of the themes. We are not always well known for our ability to agree and this was no different yet, there was a lot of consistency.

I was pleased with the conversations and felt like I was able to make a contribution in ways that I haven't felt before with this process. I felt the process was frustrating at times but mostly I felt our group worked through that well and our facilitator did a nice job of ensuring that we all had input. I suspect that was not always the case.

From here, the designers will go away and, hopefully, work some magic and come up with some designs that are good representations of our wishes - while also being good design. From there they will present some ideas to us for our feedback and then rework them again. They will present the reworked design to Community Board for final approval and sign off. The proposed Christchurch City Council Three Year Budget Plan has money allocated this upcoming year and next year for the building.

The space can be a significant space for our community and I am sure we are all hoping that the design will work well. While we may not all agree with the design, and I suspect we won't agree with it all, I do hope that we get something that is well thought out and is in keeping with the spirit of our community.

Article: Sarah van der Burch, with thanks

## Lyttelton Port of Christchurch Notice

Assisting with Training for Fireworks

Over the years Lyttelton Port of Christchurch has provided Fireworks Professionals with locations for testing of their fireworks.

On Wednesday 24 April 2013 at 1.00pm Fireworks Professionals will be undertaking some testing of their latest manufactured product [excluding star shells] ,and will conduct these at the end of the breakwater at Lyttelton Port. The tests will be dependent on weather and shipping conditions.

If you require further information regarding locations and timings, please contact George Philips, Marine and Security Manager on 027 678 9026.

Article: Lyttelton Port Company, with thanks

**Lynnette Baird** Licensed Real Estate Agent  
P: 03 328 7707 M: 021 224 6637

E: [lynnette@realhomes.co.nz](mailto:lynnette@realhomes.co.nz)  
W: [www.realhomes.co.nz](http://www.realhomes.co.nz)



# Professionals

Kennard Real Estate Limited MREINZ  
[www.kre.co.nz](http://www.kre.co.nz)

# about the lyttelton harbour review

Lyttelton Harbour Review is a community newsletter initiative developed by local Professionals real estate agent Lynnette Baird and Lyttelton Harbour Information Centre chairperson Wendy Everingham. The objective of the Lyttelton Harbour Review is to help keep local residents informed with what is going on in the wider Lyttelton Harbour community. Each week readers can read about community groups; businesses; events; and everything in between. If you have an event, topic, cause, or other, that you would like to share with the harbour community, then we would love to hear from you. Be heard, be seen, be informed - read it or offer it here.



## New Life At The Tin Palace

Harbour Arts Collective Take Over Gallery

Fantastic news for Lyttelton's art scene. Thanks to support from Project Lyttelton, the Harbour Arts Collective are pleased to announce that the Collective has been successful in receiving funding from the Christchurch City Council's Metropolitan Funding Committee to develop the Tin Palace on Oxford Street into a dedicated gallery and exhibition space.

Many thanks go out to Paula Smith, Lyttelton Mt Herbert Community Board Chairperson for alerting the Harbour Arts Collective to the fund, and for supporting the application.

The funding received will go towards renting the exhibition space, paying for a curator gallery manager, and supporting the artists' studio space that currently operates out the back.

The Harbour Arts Collective are currently writing up the job description for the curator gallery manager position and hope to release this in the next few days. For local artists and the wider community this is an exciting opportunity and wonderful news for Lyttelton, and the Harbour creative community.

## Harbour Arts Collective Public Meeting

The Harbour Arts Collective want to share more information about the Tin Palace Gallery initiative and hear from you about other arts projects you would be interested in initiating, supporting or being involved in over the coming months. We are also keen to establish a volunteer support network for the Tin Palace gallery and want to discuss how best to manage that.

Come out of your art closet and find out more about some exciting new projects, including:

- Funding to develop the Tin Palace Gallery into a permanent exhibition space for one year, including the hiring of a curator gallery manager to develop an exhibition programme and a small retail space.
- Workshops and talks in the harbour basin
- Film nights and performance art
- Become actively involved in Lyttelton's art scene.

**When:** Wednesday 1 May, 7.30pm

**Where:** Lyttelton Main School Hall  
34 Oxford Street, Lyttelton

**Supper:** There will be hot drinks available, and if anyone wants to 'bring a plate' to share for 'supper' that'd be swell.

## Contact Harbour Arts Collective

As part of 'rebranding' the Collective [as in getting a bit more organised] we will, in future, use the following email address for correspondence: [harbourartscollective@gmail.com](mailto:harbourartscollective@gmail.com). Once we get REALLY organised we will set up a website and update the email address accordingly. Please feel free to contact us at either email address over the next two weeks. After that time this one will not be used. Any questions? Catch us here for two more weeks [harbourarts21@gmail.com](mailto:harbourarts21@gmail.com) or on 0211 728 373.

# subscribe to the lyttelton harbour review

The Lyttelton Harbour Review is published every Monday and can be delivered straight to your email inbox. Just send an email with the words "subscribe me" in the subject line, then sit back and wait for the next instalment of local news, events and reviews. If you do not have access to email, but would like read about our local events, Professional Real Estate print hard copies that are available from Thursdays at the Lyttelton Club; Samo Coffee, Fisherman's Wharf, Lyttelton Library and at the Lyttelton Harbour Information Centre on London Street. Or a copy can be delivered to your door, if you live in within the Lyttelton township: Contact Lynnette on 03 328 7707.

## Sculpture on the Peninsula

Sculptors Invited to Make Submissions

The Sculpture on the Peninsula Event [previously known as Sculpture in the Garden] was the vision of the late Geoff Swinard. Geoff gathered a group of friends together with different talents who formed a committee and later the Lombardy Trust to run this event. The 2013 event, scheduled to be held November 8-10, will be the eighth. The Trust seeks to bring to the public an event that is representative of current art practice in New Zealand. This event would not be possible without the extended support and goodwill of the Sculptors, the Harbour Basin community and our friends.

Sculptors are now invited to make submissions of working drawings and or photographs according to the Conditions of Entry. Felicity Milbury and Grant Banbury will select work from these to be in the 2013 show. More details, together with an application form can be downloaded from: [www.sculpturenz.co.nz/sculpture-on-the-peninsula-awards](http://www.sculpturenz.co.nz/sculpture-on-the-peninsula-awards). Submissions close July 5, 2013.

An Award of \$10,000 will be made for artistic excellence at Sculpture on the Peninsula 2013. The award will be judged by Lara Strongman.



Winner of the inaugural Sculpture on the Peninsula Award 2011: Cheryl Lucas - Harder Larder. Sited in the Loudon farm's slaughter house, Cheryl Lucas' hanging ceramic sculptures appeared as both vessels or containers and the remnants of hanging carcasses. A kitchen larder close to the smell of death and a work rich in narratives: The land as benefactor to humanity's needs and a landscape soiled in blood. It belongs to an iconography of landscape painting that includes Graham Sydney's Killing House and Colin McCahon's Seven Days in Nelson and Canterbury, yet it is also distinct from such painterly traditions as a series of beautiful and skilful ceramic objects perfectly integrated within the landscape of Banks Peninsula. -Warren Feeney

Article: [www.sculpturenz.co.nz](http://www.sculpturenz.co.nz)

## Rumour Has It...

God Save the Queen is re-opening soon in Lyttelton! Fingers crossed by both the owners and the community that this fabulous shopping experience will be open by Queen's Birthday Weekend in June, if not earlier. You can look forward to finding God Save the Queen at 33 London Street, Lyttelton [being the old barber's shop].

[www.facebook.com/GodSaveTheQueenNZ](http://www.facebook.com/GodSaveTheQueenNZ)

AND

More exciting news for London Street is the highly anticipated launch of a new foodie destination, scheduled to open real soon. You will have to stay posted to learn more or, if you are like the Review editorial team, you will be constantly checking on progress in London Street with great anticipation. Imagine every day fresh foods, gourmet ingredients for creative meals, fresh fruit and vegetables, fresh meats, delicatessen and divine pre-made goodies—available right in the heart of Lyttelton. Bring it on, we can't wait.



## Lyttelton Harbour Festival of Lights

Save the Date: June 20 - 23

This year the festival is scheduled for June 20-23. The famous Street Party will be June 21 so please mark that in your diaries now. As in previous years, now is the time to start thinking about what events you can include as part of the festival programme. To be a truly harbour event it will be great to have activities scheduled right around the harbour. Time lines are tight for inclusion in the programme so get your ideas to the new event organiser, Lucette quickly - 021 1758 9845.

# contact the lyttelton harbour review

The team at the Lyttelton Harbour Review would love to spread the word about your community group, fundraising efforts, local heroes, business promotions, events and anything else that the local community would like to share. Phone, Email, or Post: Lyttelton Harbour Review, PO Box 94, Lyttelton 8841. **Deadline for any content: Thursday before Monday publication date.**

Lynnette Baird

03 328 7707

021 224 6637

lynnette@realhomes.co.nz

Wendy Everingham

03 328 9093

021 047 6144

infocentre@lyttelton.net.nz

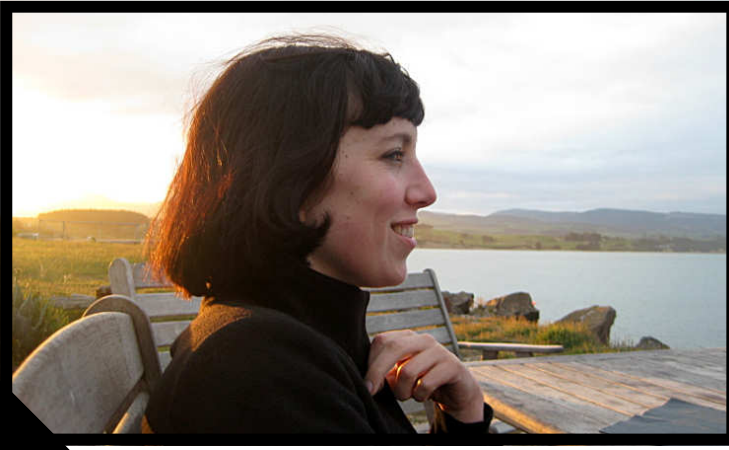
## Project Lyttelton Events Manager

Introducing: Lucette Hindin

With a myriad of events happening within Project Lyttelton, it was time to appoint a part time events and marketing coordinator. Lucette Hindin was the successful candidate and she has swung into the role very quickly. With the Lyttelton Harbour Festival of Lights fast approaching that is her first task. Talk about a baptism by fire! She's fast making connections to get things moving along.

Lucette will be known to some of you already. She has lived in Lyttelton on and off over the past ten years. Our first recollections of Lucette were in the early days of the Lyttelton Summer Street Party. She made wonderful costumes for street performers. She also created some terrific plays. The one that really comes to mind was the production in a soon to be demolished home in Winchester Street. "Flight Patterns" was quite something. Nothing beats transforming the walls of your home into your own theatre set! The entire show was intimate, imaginative and memorable. The mood and the feel were amazing.

You might also recognise Lucette for that wonderful earthquake play, "Hold onto your Horses" performed on the back of a trailer. She produced, directed, acted and made costumes for that as a CERA sponsored community activity in 2011. It was a really uplifting performance when we were all feeling rather glum and battered by our surroundings.



Lucette is the perfect person to take our community events further. Her roles encompass the production of the Festival of Lights, Festival of Walking, plus a new summer food and spring event.

Lucette says "There are three areas or paths in my life: the arts, community development and my interest in food and sustainable practices." These attributes link so well with the breadth of projects in the festival portfolio for Lyttelton. Watch carefully as she moulds and develops these events in collaboration with us.

Lucette will be based at the Lyttelton Harbour Information Centre as the Project Lyttelton Events and Marketing Coordinator, and can be contacted on 021 175 9845.

Article: Project Lyttelton, with thanks  
Image: Lucette Hindin, with thanks

## Sumner Road to Open Again

Councils Three Year Plan to Repair and Reopen Sumner Road

Following the February 22 earthquake and prompt closure of Sumner Road up to Evans Pass and Summit Road, both Lyttelton and Sumner residents alike have been questioning if the Council or Transit will look to reopen this vital link between the two villages.

Recent speculations have prompted Jane Parfitt, General Manager of City Environment, to forward an internal memo to Mayor Bob Parker and Councillors clarifying:

"Paul Burden, Manager Road Corridor Operations says that there is no truth in the rumour [that Sumner Road will permanently close]. The Christchurch City Council has scheduled the Sumner Road for repair work. There is \$105 million allocated in the Three Year Plan for fixing the 'lifeline' route through Sumner to Lyttelton. Of this, around \$30 million will go towards the repair of Sumner Road [see page 320 of Volume One of the Three Year Plan: Infrastructure Rebuild – Provision of Roads and Footpaths, ID 2441]. At this stage we can't commit to an actual opening date because this is a major project that will take at least 18 months to complete."

Article: Lyttelton Mt Herbert Community Board, forwarded with thanks

# plenty to share

In Lyttelton so many residents grow vegetables; or have fruit trees literally dripping with produce. Plenty to Share is about sharing any excess produce with the community. So if your lemon tree is yellow with goodness and you can't keep up with making lemon curd, bring those surplus fruits down to the organisers, where every Saturday the swapping of produce is well underway in Lyttelton on the corner of London and Canterbury Street; and also in Diamond Harbour on a Saturday morning at the village centre. If there is something on the Plenty to Share table that you would like to take home, then you are warmly invited to do so.

## Rental Values Continue to Rise

12% Residential Rent Increases in Less Than 12 Months

If you have been looking to rent a home in Lyttelton, then you will know firsthand how difficult it can be in finding the right place, and then hoping it is available at a reasonable price. First quarter results for rental property values in the Lyttelton neighbourhood have been released by the Department of Building and Housing and highlight a 12.85% increase in average rent values in less than twelve months.

In the year closing 30 June 2012, tenants would have been more accustomed to seeing rents ranging between \$300 and \$370 per week, or a median value of \$350 per week, for an average three bedroom home in Lyttelton. Accordingly to recent statistics the average three bedroom home in Lyttelton today is likely to range from \$360 to \$495 per week. As a median value indicator, tenants can now expect to be paying around \$395 per week.

Of course the question on everyone's mind is will rents continue to increase? Unfortunately for tenants, it will be reasonable to expect rents to increase. Increases this year may not just come from the continued high demand and lack of supply scenario, but also be wary of the changes to insurance policies coming through as homeowners switch from full replacement to sum insured. As is traditionally the case, higher costs to the home owner will be passed down onto tenants.

And lastly, as an interesting note for those renting, the online mortgage calculator via Westpac.co.nz suggests that if you can manage a \$15,500 deposit your \$395 per week in rental payments could go toward buying a home to the value of \$309,000. Now there's some serious food for thought.

If you are looking to rent in post quake Christchurch, be sure to have a read of the attached information document created by the Ministry of Business, Innovation and Employment [which incorporates the Department of Building and Housing].

Note: Statistics quoted are derived from information gathered from bonds lodged at the Department of Building and Housing. The results may not be a true indication of the rental market, because they only reflect properties where bonds are lodged at the Department of Building and Housing. This data should not be used to determine the market rent of any particular property.

Article: Lynnette Baird, Professionals Real Estate

## Harbour Co-Op Meeting

Mark your calendars the next Owner's Meeting will be held on Saturday May 4th, 4.00pm at the Union Parish Chapel on Winchester Street. Open to all, families welcome. Bring a plate if you'd like to stay for a shared supper.

The Harbour Co-op is only as strong as the support of our members. Please join us and help the Harbour Co-op to better serve the community. We need you! See you there.

## Art Therapy Course

Bettina Evans, who previously worked as one of the Lyttelton TimeBank Co-ordinators, is studying for a Masters in Arts Therapy and would love to share her enthusiasm for the creative process with other women. On this note, Bettina is organising an art therapy course to be spread over five sessions on Thursday nights in May.

No previous art experience is necessary, but here is your opportunity to:

- Explore different art materials
- Explore the four elements
- Explore your self

Where: Lyttelton West School Hall, Voelas Road, Lyttelton  
When: Thursday May 2, 9, 16, 23 and 30; 7.00pm to 9.00pm  
Cost: \$40 for five sessions  
Contact: Enrolment or more information, phone Bettina 03 328 7201

# diamond harbour writers group

The Diamond Harbour Writers Group are an informal group that encourages members to develop their skills in writing prose and verse. New members are welcome, and you can be from anywhere in the Harbour region to join. Meetings are held the third Wednesday of the month, in the afternoon, at a private home. They also have a blog site: [diamondharbourwriters.blogspot.co.nz](http://diamondharbourwriters.blogspot.co.nz) which includes more their great work, and much more information about them. For more details please contact John Riminton 03 329 4329 to enquire further.

## Diamond Harbour Writers Group

April Author: Therese Miller

This month author Therese Miller has been inspired by the local Purau valley agricultural life. Enjoy:



### Neighbours

Not far away in the Purau valley, I was quite sure I could hear a donkey  
I'd pitched my tent at the end of the day; But my close neighbour had plenty to say  
Could it be that I'd disturbed its sleep; Or was its intent to annoy the sheep  
In that case he got what he wanted; As very soon they retaliated.

Hee haw Baa baa what a cacophony; I couldn't find my ear plugs Poor old me  
The only solution was to get up and go; But at this time of night I didn't know  
How I possibly could pack all my gear; And to face opossums was my big fear.

Courage I said to myself just be brave; Cos around here there's no other cave  
Shut your eyes tight and start counting the sheep; It's worked in the past soon you'll be asleep  
Sleep I did I know I counted many; I woke up with a start to a bright new day  
The sheep now silent munching brown grass; Were watching the donkey and it was crass  
To see him enjoying the thistles so tall; Which were growing halfway up the old stone wall

Neighbours they might be but friends they were not, He'd been offended when he'd seen them gloat  
They thought he was ugly and ungainly; His ears were too big his cry too throaty.  
He did not care it would soon be au r'voir; A truck would take them to the abattoir.

The farmer was known to be a greenie; And it was one sure thing he wouldn't spray  
So there'd always be thistles aplenty; For Monty the little brown donkey.

## Black Cat Cruises Competition

Diamond Harbour Photo competition with Black Cat Cruises, Upload your photo showing your experience of Diamond Harbour, share with your friends and win great prizes. Up for grabs is a \$300 Macpac Voucher, \$100 Freemans voucher plus spot prizes from Metro, Macpac and Freemans Dining Room. To enter and vote go to [www.akaroa.blackcat.co.nz](http://www.akaroa.blackcat.co.nz)

## Under The Grill

Councillor and Community Board Local Elections

Elections for Mayor, Councillors and local Community Boards will be held Saturday 12 October 2013.

Here at the Lyttelton Harbour Review we will be looking to interview the people standing for Banks Peninsula Councillor and also those standing for positions within the Lyttelton Mt Herbert Community Board. To remain impartial with our interviews the same questions will be asked for each candidate to answer.

But, what would you really like to know? If you had five minutes with a prospective Councillor or Community Board Member, what you ask of them? Give it some thought, and let us know, so that we can ask and report accordingly.

Email your questions to: [lynette@realhomes.co.nz](mailto:lynette@realhomes.co.nz) or [wendy.everingham@xtra.co.nz](mailto:wendy.everingham@xtra.co.nz) or drop your questions into the Lyttelton Harbour Information Centre.



# lyttelton live music scene

Lyttelton is host to some great live music: Tuesday 7.30pm Open Mic Night at Wunderbar; Wednesday 8.00pm Marlon Williams Live at Port Hole Bar; Thursday 7.30pm Live Music at Porthole Bar; Saturday 10.00am local musicians at the Lyttelton Farmers Market; Sunday 3.00pm Courtney Carmel at Freemans; and the list goes on. So don't say home! Head on out and celebrate all that is Lyttelton Live.



## Solutions: Red Rock Runs

Red Rocks encased In a steel and wire casket.  
An end of dreams, resting in their metal  
Wire basket.  
Just another casket  
Of broken dreams.  
Ending those long lines,  
Seismic fault lines.  
Magma rock born of fire.  
Soul on fire,  
Endings of long lines,  
Reflected in this cycling ring of fire,  
Magma rock seismic birth, born of fire.  
Blood run hills,  
Red rocks run, red rocks run.  
Red rocks encased in a steel and wire casket.  
an end of dreams, resting in their metal basket.

Poem: Submitted by GEO, with thanks

Image: [www.wikipedia.org/wiki/RhyoliteA](http://www.wikipedia.org/wiki/RhyoliteA). Sample of Rhyolite volcanic rock from the Conical Hill dome at the head of Lyttelton Harbour [Allandale].

## Wunderbar Gig Guide

This Week at the Wunderbar

Tuesday 23	7.30pm	Artist Showcase and Open Mic Night
Wednesday 24	8.00pm	Kim Potter
Thursday 25	8.00pm	Kim Potter and the Vinyl Bums Experience. Tickets \$5.00 at the door. The Vinyl Burns Experience: 1970's show business legend and icon, Vinyl Burns returns for a night of ridiculous good looks, dangerous expectations and a selection from his surprisingly impressive circus repertoire. Comedy Circus meets Character Stand up.



## Tommy Chang's

Saturday 27 April | 48 London Street | 9pm | Tickets \$10  
The All Seeing Hand/Seth Frightening Tour 2013- Open Message to All Heads

The All Seeing Hand is comprised of Alphabhead (masterful Turntablist gestated in the Hip Hop battle scene before branching into every direction at once, working everything from orchestral gamelan and Inuit folk music to post-punk and electronica into his extraordinary compositions) Jonny Marks on vocals (a true sonic explorer, traditionally-trained Mongolian throat-singer and high-energy front-person) and Benjamin Knight on drums (trained in the energy of DIY punk and hardcore, tightly binding the whole sound together with drumming that is equal parts driving and frantic). These elements combine into a band of dissonant, dense beauty and intense live shows that leave observers with an ecstatic mixture of wonder and confusion.

Read More: [www.mukuna.co.nz/canterbury/christchurch/gig79364](http://www.mukuna.co.nz/canterbury/christchurch/gig79364)

# c'mon get involved

Lyttelton is known for its culture of volunteer activity and community participation. If you have ever had the thought that you would like to be more involved in the local community, but you are not sure where to go, or who to talk to? Start by having a conversation with the team at the Lyttelton Harbour Information Centre, as they can give you some advice on the many types of great volunteer organisations here in Lyttelton. If you are passionate about elderly care, sustainability, youth culture, harbour activities, heritage, radio, business development, fundraising, or just about anything - then there is a group who would love for you to be involved!

## Matt Langley Announces New Album + Tour

Naval Point Club: Saturday 4 May 2013 | Tickets \$15



## Fundraising Quiz Night

The Lions Club of Lyttelton challenges you to a quiz night

When: Sunday 28 April, 7.00pm  
Where: Valley Inn, Heathcote Valley  
Cost: \$10.00 per ticket

How to book: Tables of 4 or 6 may be booked with Mary Jamieson 328 8523 or email [mjam@xtra.co.nz](mailto:mjam@xtra.co.nz)  
Come along for a fun night and take part in the battle of brains! Proceeds to be used to support your local community.

Article and Image: Lyttelton Lions Club,

## Kath Bee and Bands 2013 Grandparents Rock SI Tour

Lyttelton Main School Hall | 24 April, 10.30am

## Roots Restaurant Meal Exchange

We love fresh produce, and even more so when it is from Lyttelton! We would like to put the word out of our plan to get more local produce rolling in, and in exchange get a meal voucher from Roots Restaurant. Simple as that, come and talk to us and let us know what's in excess in your backyard. If you are willing to share it with us, we can offer you in return a meal voucher valued on an mutually agreed value. So we will enjoy food from your garden, and you will enjoy our food from our kitchen.

## Lyttelton Main School Board of Trustees Election

Nominations are invited for the election of six parent representatives to the board of trustees. A nomination form and a notice calling for nominations will be posted to all eligible voters. Additional nomination forms can be obtained from the school office.

Nominations close at noon on May 16 2013 and may be accompanied by a signed candidate's statement. The voting roll is open for inspection at the school and can be viewed during normal school hours. There will also be a list of candidates' names, as they come to hand, for inspection at the school. Voting closes at noon on 30 May 2013.

Article: Lyn Carson, Returning Officer

## St Joseph Worker Catholic Church

21 Exeter Street | Sunday 28th April at 5.30 pm

## Home for Rent

Home for rent. Suit family who need accommodation while their house is being repaired. Available for rent from May 4 until July 26th, 3 bedroom house, fully furnished. Warm and sunny, situated on the east side of Lyttelton with no port noise. The house is well insulated with a heat pump and wood burner. Would suit couple or family with up to two children wanting accommodation while their house is being repaired. Non smokers and no pets. Rent negotiable. Phone 328 8633 or 027 338 5560.

# think lyttelton harbour

Support the 'buy local' cause and your local community by registering your business with us, or by shopping at the locally owned businesses. Buy their products. Eat their food. Use their services. In turn, these locally owned and operated businesses will continually pump your hard earned dollars back into the local economy by way of employment, purchases and taxes to create a stronger more resilient community. You gotta love that!



## Mothers Day: Sunday May 12

How Will You Treat Your Mum

Every year New Zealanders take time out to focus on thanking their mothers for what they have done for their children and family. From flowers and magazines, to clothes and accessories, to spa treatments and of course not to forget the traditional Mothers Day brunch, lunch or dinner –Mother's Day is one the largest gift giving holidays in the country.

While we are not promoting excessive spending, just take a moment to consider the impact your money could make, if it were spent locally. So, this Mother's Day, show your mum she taught you well and buy her a gift from a locally owned business, because we all know it is the thought that counts!

And with plenty of ideas and solutions for Mother's Day, be sure to tell everyone how fabulous the Lyttelton Harbour is:

Bells Pharmacy	Perfume, pamper products and more
Chalfont Cafe	Diamond Harbour magic open for bunch and lunch with harbour views
Coastal Living	Framed picture of the family, gift cards, wide range of gift options, jewellery
Coffee Culture	Coffee and cake around the glow of the open fire
Diamond Harbour Ferry	Spend the day and take mum over to Diamond Harbour
Everest Indian	Spice it up for mum with delicious Indian, dine in or take away
Fishermans Wharf	Lunch or dinner with intimate views of the port, fresh catch n fresh cooked
Freemans	Brunch, lunch or dinner with jazz music in the afternoon too
Godley House Cafe	Stay the day in Diamond Harbour with great food and views, bunch or lunch
Governors Bay Hotel	Worth the drive for views and great food for bunch, lunch or dinner
Ground Gourmet	Catering for special events, invite the whole family home and no one cooks
Hands on Health	How about a relaxing massage for mum, de-stress then out for dinner
Harbour Co-Op	Treat mum to your home baking, all the ingredients are here
Himalaya	Winter warming stock now available, unique gifts and everyday items
Irish Bar	Juke box music, warm glowing fire and views of the port
Leslies Bookshop	Guaranteed to find a great read for mum from Leslies, gift cards and wrap too
London Fish n Chips	No need to cook, how about takeaways by the water on a good day
London Street Dairy	Everything edible, including chocolate who could say no
Lyttel Beauty	Pamper perfect with facial, manicure or other special treatments
Lyttelton Bakery	Great solutions to pull together a picnic for family, friends and mum too
Lyttelton Seafoods	Fish, chips, burgers and more offers a great picnic style meal by the wharves
Maids of Ink	Permanently dedicate your love for mum with a tattoo, but with permission
Milly May	Gorgeous and practical items from the very talented Milly May team
Mondo Vino	Special drop of something fabulous to accompany your home cooked meal
Porthole Bar	Bunch, lunch, dinner or simply stop in for good music and wine
Portico	Unique and New Zealand made products, jewellery, home wares and more
Port View Restaurant	Mothers day buffet dinner with the best view in town
Orton Bradley Park	Pack a special picnic, enjoy as a family and let the kids run wild
Roots Restaurant	Seasonally fresh and ever changing inspired menu for lunch or dinner
She Chocolat	Chocolate gift ideas and open for bunch, lunch and dinner
Shunyata Day Spa	Ultimate pamper spa experience for mum to escape
Sno Clothes	Keep mum warm with a new winter jacket, scarf or hat
Storm Hairdressing	Pamper mum with a mini-make over new hair style or products
Tailored Portraits	Create special memories with a fun or serious family portrait
Tommy Chang's	Sunday night in a relaxed environment for dining out or a few drinks
World Organics	Skin care packages to pamper mum anytime of the year

# lyttelton market town

Saturday mornings are never dull in Lyttelton! Enjoy the local markets including the Lyttelton Farmers Market for fresh produce, meat, fish, eggs, honey and yummy baked goods. Check out the new Lyttelton Arts Market on the corner of London and Sumner Road. Head up to the Grassy Art and Craft Market for bargain items or unique art items. And be sure to check out the Community Fundraising Garage Sale located up the driveway behind the swimming pool. Its all here, so where else would you want to be!

## Banks Peninsula Zone Committee Focuses on ZIP Feedback

The Canterbury Water Banks Peninsula Zone Committee will meet for its regular monthly public meeting on Tuesday, 23 April, in Governors Bay. The committee will begin the meeting by offering members of the public a chance to contribute to the meeting, should they wish. Following this, the committee will receive an update from the Regional Committee, which considers regional issues of environmental restoration and repair; land use impacts on water quality; as well as water storage, distribution and efficiency options.

The key focus for Tuesday's meeting will be on working with Christchurch City Council and Environment Canterbury on implementing the key recommendations in its Zone Implementation Programme (ZIP). The Banks Peninsula ZIP was received by Environment Canterbury last month as the basis for the design and realignment of council work programmes for freshwater. It will go to Christchurch City Council on 24 April.

Its water management recommendations were developed collaboratively with the community to enable present and future generations the greatest environmental, cultural, social and economic benefits from the region's water. The ZIP includes ten chapters, each focussing on a different priority area for water management. The ten chapters are:

Water quality	Lake Wairewa
Water quantity	Wastewater
Biodiversity	Climate change and flooding
Kaitiakitanga	Education and communication
Erosion and sediment control	Coastal

Christchurch City Council and Environment Canterbury will be the lead agencies in many of the recommendations in the ZIP, and at the meeting representatives from each council will outline how they will go about implementing the priority on-the-ground actions.

At the meeting the committee will also receive a presentation on minimum flows and permitted use of water in the zone from Environment Canterbury. The presentation will use French Farm Stream as an example to illustrate how low flows, consents, and plans work with respect to consented and non-consented water abstractions.

The Banks Peninsula Zone Committee typically meets on the third Tuesday of each month. Zone Committee meetings are open to the public.

What:	Banks Peninsula Zone Committee meeting
When:	4.00pm, Tuesday 23 April
Where:	Governors Bay Hotel, Governors Bay
Agenda:	For a copy of the agenda visit <a href="http://www.ecan.govt.nz/canterburywater">www.ecan.govt.nz/canterburywater</a> prior to the meeting.

For more information contact:

Lesley Woudberg-White  
Banks Peninsula Zone Committee Facilitator  
Environment Canterbury  
Email: [lesley.woudberg@ecan.govt.nz](mailto:lesley.woudberg@ecan.govt.nz) or phone 027 706 4273



# Mothers Day

## Buffet

at

## Port View Restuarant

**Bring mum for an enjoyable day out and  
take in our spectacular million dollar view.**

**Roast Buffet  
Desert, Tea & Coffee**

**Port View Restuarant  
Under new management  
Lyttelton Club Inc.**

**Sunday, 12th May  
Lunch 11.00 - 3.00pm  
Dinner 5.00 - 8.30pm**

**Book now!  
ph 328 8740**



# make over your **MUM!**

Does your Mum deserve some TLC this Mother's Day? Enter today and she'll be in to win a fabulous prize valued at over \$500!

## Three prize packs to give away!

### Each prize pack includes:

- Dinner for two at Freemans Dining Room
- A facial and massage at Total Body Concept
- Colour, cut and finish at True Grit Hair Spa

Complete an in-store entry form at Freemans, Total Body Concept or True Grit by May 11th, 2013 and your Mum will be in to WIN just in time for Mother's Day. (May 12th).

View full details, terms and conditions online at [www.truegrithairspa.co.nz](http://www.truegrithairspa.co.nz)

*Freemans*  
[www.freemansdiningroom.co.nz](http://www.freemansdiningroom.co.nz)

TOTAL BODY CONCEPT  
specialised skin care and day spa  
[www.totalbodyconcept.co.nz](http://www.totalbodyconcept.co.nz)

tg true  
grit  
hair  
spa

# Youth Education and Training Program

## Matauranga Taiohi

---



**Whakaraupo Carving Centre**

# Whakaraupo Carving Centre

He mana whakairo he mana tangate

---

The creation of the Whakaraupo Carving Centre Trust in 2010 created both challenges and opportunities generally unprecedented within the Otautahi (Christchurch) area.

Meeting these challenges and realising the opportunities presented to the youth of Otautahi that come from Whakaraupo Carving Centre is a priority within the youth educators of this city.

It is no small task ahead of us to realise that we must better embrace the obligation of ownership of the development of tomorrows adults, today's youth.

I am heartened that a number of Cantabrians are already doing this. The response we have had in the last three years has ensured our evolution of teaching styles has become what it is today.

We are proud to present for consideration our range of courses designed and tailored for all New Zealanders using traditional Maori arts .

Success will be measured by how we work together and maximise the opportunities to revitalise and invigorate the future leaders of our community and country.

The impact that these children of Otautahi will have on its evolution will be our legacy.



Progress of past students of the Whakaraupo Carving Centre within society has been dramatic and clear. Around greater Christchurch we can see many ex-students making positive gains for not just themselves, but their families and communities collectively.

Future generations will reap the rewards of our endeavours today and I invite you to accept the challenges offered by our Centre.

Together we can make a bigger impact on the future.

*Caine Tauwhare*

Caine Tauwhare  
**Head Carver & Centre Manager**





K  
O  
I  
R  
O

### Introductory Level Classes

- Contemporary Murals (1 day per week)
- Bone Carving
- Taonga Puoro (Introduction into Musical Instruments)
- Patu



K  
O  
T  
A  
R  
E

### Intermediate Level Classes (Teens and Young Adults)

- Weapon Crafting & Training – Taiaha, Patu etc.
- Taonga Puoro Crafting (Musical Instruments)
- Bone Carving
- Patu



W  
H  
E  
K  
E

### Senior/ Advanced Classes (All students)

- Carving Traditional Maori Masks
- Poupou (2-dimentional figure carving)
- Carving Patterns





# Youth Education and Training

## Contact Information

---

Whakaraupo Carving Centre Trust

30 Godley Quay  
Lyttelton  
Christchurch 8082

**Caine Tauwhare**  
Carver

Ph. (03) 741-1410

E. [Whakaraupo.carving@xnet.co.nz](mailto:Whakaraupo.carving@xnet.co.nz)



# GROW

*a little*

*Extra*

**for Community House**

**Did you know Community House  
delivers 5 home-cooked meals a week  
to elderly residents of Lyttelton?  
Could you please help by contributing  
extra from your garden?**

Produce delivery coordinated through the  
Community Garden, contact Sue-Ellen on 328 9243



# “c'mon get involved”

April 2013

## Lyttelton Harbour

### Community Garage Sale

All donations of good used, or new, household items greatly accepted at Project Lyttelton 54a Oxford Street. Please do not donate items that cannot be sold, as this increases our costs trying to take unwanted items to the charity barn, or worse still the rubbish depot.

### Governors Bay Pre-School Music

Preschool music classes run on Thursday mornings during school term, 9:15 - 10am in the Governors Bay School library. Come and join us for singing, dancing and musical games. Cost \$3.50. All under 5s welcome, please bring a grown-up with you. Contact Mel Dixon 3299 908

### Lyttelton Community Association

New members welcome. As an issues based organisation, we do not hold regular meetings. If you would like to be advised of when the next meeting will be held, or have an issue to discuss, please email us at [LCAssn@vodafone.co.nz](mailto:LCAssn@vodafone.co.nz) or phone Ken Maynard 03 328 9553.

### Lyttelton Community House

Meals for the elderly continue to be prepared and delivered daily. If you know of any elderly residents who need this service, or would like to volunteer to assist, please contact Christine or Courtenay 03 741 1427.

### Lyttelton Harbour Basin COMMUNITY Civil Defence

New members welcome. Meets every third Wednesday of the month 7.00pm - 9.00pm at Lyttelton Main School. To become involved contact the acting Lyttelton leader Wendy Everingham 03 328 8359 or 021 047 6144 .

### Lyttelton Harbour Business Association

For more details visit: [www.lytteltonharbour.co.nz](http://www.lytteltonharbour.co.nz)

### Lyttelton Harbour Information Centre

Monday to Saturday 10.00am to 4.00pm; Sunday 11.00am - 3.00pm.

### Lyttelton Harbour/Whakaraupo Issues Group

Focus is to improve the natural environment and habitat of the harbour and harbour basin. Meetings are every second month. All welcome. Contact Claire Findlay (Chair) 03 328 8930, Melanie Dixon (Support) 03 329 9908 or visit [www.ecan.govt.nz/lhwig](http://www.ecan.govt.nz/lhwig)

### Lyttelton Lions

Meet on the 2nd Tuesday of each month at Community House at 7.30pm. Anyone interested in becoming involved, or anyone who would like to learn more about this organisation, is most welcome. Contact Mary Jamieson 03 328 8523 or Dave Evans 03 379 6675.

### Lyttelton Historical Museum Society

Lyttelton Museum committee is developing a concept plan for the re-building of Lyttelton Museum . Meetings held once a month. New members, donations or any other support is welcomed. Lyttelton Museum, PO Box 95, Lyttelton. 328 8972 [lytteltonmuseum@xtra.co.nz](mailto:lytteltonmuseum@xtra.co.nz)

### Lyttelton Reserves Management Committee

Reserves Committee meets on a regular basis to make decisions about the management of the reserves. It organises weed control and planting programmes that include public and schools planting days. To be involved email the group at [reserves@lyttelton.net.nz](mailto:reserves@lyttelton.net.nz).

### Lyttelton Time Bank

Located within the Lyttelton Harbour Information Centre, 20 Oxford Street, open from 10.00am to 4.00pm, Monday to Friday. Or contact via email [timebank@lyttelton.net.nz](mailto:timebank@lyttelton.net.nz) or phone the Information Centre on 03 328 9093.

### Lyttelton Toy Library

Now at 25 Canterbury Street. Sessions every second Saturday 10.00am to 12noon. Range of 500+ toys for children aged 0-5 years. Toys large and small, ride-ons, puzzles, games and dress-ups to borrow. Join anytime \$42.00 per year. Toy Librarian: Kimberly 03 384 8400 .

### Lyttelton Volunteer Fire Brigade

Meets for training and maintenance every Thursday night from 7.00pm at the temporary station in the Lyttelton Port Company admin building car park, 56 Norwich Quay. If you are interested in joining, then pop on in. Russ Barron, Brigade Secretary.

### Lyttelton Youth Centre

Youth Centre/Community House, 7 Dublin Street, Lyttelton. Contact Christine 03 741 1427 for further details.

### Plunket Playgroup

The Plunket Playgroup can be found at Lyttelton Main School, every Monday and Wednesday, 10.00am to 12noon. 50 cents donation and everyone is welcome. Contact Jodi Rees 328 9246 and Andrea Solzer 328 9346 [note the phone numbers are very similar].

### Project Lyttelton

The Portal, 54a Oxford Street, Lyttelton [located behind the Swimming Pool]. Office 03 328 9243.

### Volcano Radio

Currently - Off Air. Fundraising t-shirts available from Portico, 48 London Street.

# “business directory”

support our local businesses

April 2013

## Lyttelton

Abbraccia Bellydance	41 Voelas Road [West School]	03 328 8883	Paige 021 999 848
Acupuncture Therapy	18 Oxford Street	03 328 9053	Robin Kerr
Alexander Technique	Private Address	03 328 8968	Belinda Walker
Alterations and Ironing Service	Oxford Street	Private No.	Wendy De Backer 021 0288 1466
Bank of New Zealand	56 London Street	0800 80 04 68	Trish, Kelly, Donna
Banks Peninsula Accounting	PO Box 83, Lyttelton	03 328 7231	Chris 021 280 0086
Beauty by Carly	Private Address	Private No.	Carly 021 294 5676
Bells Pharmacy	50 London Street	03 328 8314	
Body Kinetics - Gym   Fitness	Oxford Street	03 328 7002	Jen 027 204 1224
Christchurch Council Service Centre	15 London Street	03 941 8999	Debbie/Patricia
Christchurch Yoga	Private Address	03 328 8889	Rebecca 021 071 0336
Coastal Living / Picture Framers	34 London Street	03 328 7350	
Coffee Culture	18 London Street	03 328 7080	
Dandy Designs - Web Business Develop	Private Address	03 328 8646	dana@dandydesigns.co.nz
Diamond Harbour Ferry	B Jetty, Lyttelton Wharf	03 328 9078	
Dockside Apartments	22 Sumner Road	03 325 5707	Grant / Kathy
Everest Indian Restaurant	2 London Street	03 328 8185	Parminder Singh
Fishermans Wharf	39 Norwich Quay	03 328 7530	
Freemans Restaurant	47 London Street	03 328 7517	
Frog Web Works	14 Winchester Street	Private No.	Graeme 027 473 5018
Ground   Gourmet Foods, Catering	Lyttelton Farmers Market	022 476 8633	<a href="mailto:info@ground.co.nz">info@ground.co.nz</a>
Harbour Co-Op	12 London Street	03 328 8544	
Hands on Health   Nutrition Massage	Private Address	Private No.	Rebecca 027 494 6349
Himalaya Design	20 London Street	03 328 7600	Open 7 Days 10am - 4pm
Home Based Child Care	Private Address	03 328 7217	Marcia 021 236 1682
Home Based Education	Private Address	03 328 9229	Jen Skjellerup
Irish Pub	17a London Street	03 328 8085	Ross, Janet, Roger and Sandy
Jack Tar Sailing	West Side, No.7 Wharf	03 389 9259	Mike Rossouw
Land Arch Landscape Architects	13 Exeter Street	03 328 8882	<a href="mailto:dan@landarch.co.nz">dan@landarch.co.nz</a>
London Fish and Chips	34 London Street	03 328 8819	
London Street Books	48 London Street	03 328 8088	Thurs-Sun
London Street Dairy	34 London Street	03 328 7358	Open 7 Days
Leslies Bookshop	18 Oxford Street	03 328 8292	
Lyttel Beauty	32 Voelas Road	03 328 7093	<a href="http://www.lyttelbeauty.co.nz">www.lyttelbeauty.co.nz</a>
Lyttelton Bakery	6 Norwich Quay	03 328 9004	
Lyttelton Builders Limited - Office and Yard	16 Canterbury Street	03 328 9305	Peter Tocker 021 862 537
Lyttelton Harbour Information Centre	65 London Street	03 328 9093	
Lyttelton Library	35 London Street	03 941 7923	
Lyttelton Health Centre	18 Oxford Street	03 328 7309	
Lyttelton Physiotherapy	18 Oxford Street	03 328 8111	
Lyttelton Recreation Centre	25 Winchester Street	03 941 5656	
Lyttelton Sea Foods	6 Norwich Quay	03 328 7628	
Lyttelton Service Station	1 Canterbury Street	03 328 8749	
Lyttelton Shuttle	Airport, Tours, Anywhere	Private No.	Linda 021 254 4986

# “business directory”

support our local businesses

April 2013

## Lyttelton [continued]

Lyttelton 'Top' Club	23 Dublin Street	03 328 8740	
Mac Todd Solicitors	50 London Street	03 328 9992	Ray Blake 021 43 66 50
Maids of Ink	31 London Street	03 328 9263	Basement Level
Min Sarginson Real Estate	53 London Street	03 328 7273	Min Sarginson 027 432 0327
Mondo Vino	42 Norwich Quay	03 328 7744	
Orbit Architecture	5 Norwich Quay	03 328 9294	Neil Aitken 021 155 5601
PedalOn Bicycle Service	2 Exeter Street	03 328 9246	021 055 6865
Port Electric : Computer Appliance Repair	Private Address	03 328 8099	Ken 021 117 6848
Port Hills Auto Centre	42a Norwich Quay	03 328 9980	
Porthole Bar	40 London Street	Private No.	Mike 021 328 977 [Tue-Sun]
Portico	48 London Street	03 328 8088	Tue-Sun 10am - 4pm
Port View Restaurant	23 Dublin Street	03 328 8740	Wed-Sun + Sat-Sun Brunch
Professionals Real Estate	36 London Street	03 328 7707	Lynnette Baird 021 224 6637
Project Lyttelton Office	54a Oxford Street	03 328 9243	Sue-Ellen
Pynenburg and Collins   Architects	PO Box 80, Lyttelton	Private No.	Simon 021 163 7193
Ray White Real Estate	47 London Street	03 331 6757	Marie   Daisy
Roots	8 London Street	03 328 7658	Christy   Guilio 021 120 8083
Rossouw Window Cleaning	Private Address	03 389 9259	Mike 0274 355 239
SAMO Coffee	3 Canterbury Street	Private No.	Open 7 Days
Sno Clothes and Milly May	8a London Street	03 328 8584	Heather
Special Branch NZ   Arborist	Hawkhurst Road	03 328 8303	Tim 022 091 9202
Storm Hairdressing	34 London Street	03 328 8859	Sally   Kat
Tailored Portraits   Photography	Cressy Terrace	03 328 7122	Gillian Taylor 021 047 4415
Thea Mickell Services Ltd   Fundraising	Private Address	03 384 7547	Thea 027 607 7282
The Mindful Body	Private Address	03 328 9923	Janet 027 368 6515
The Rookery	Ross Terrace	03 328 8038	Angus   Rene
Time to Resolve   Mediation Service	Private Address	03 328 8219	Chantal 022 618 8532
View Hairdressing	Private Address	Private No.	Megan 027 488 5173
Volcano Radio	Private Address	03 328 8566	
World Organics Skincare	Private Address	03 328 7446	Nicki 027 423 9455

## Diamond Harbour

Bronwen Jones- Writing and PR Services	Rawhiti Street	03 329 4303	<a href="http://www.bronwen-jones.com">www.bronwen-jones.com</a>
Chalfont Cafe   D.Harbour Country Store	2 Waipapa Avenue	03 329 4854	Open 7 Days till 5.30pm
Diamond Harbour Ferry	Waipapa Avenue	03 328 9078	
Diamond Harbour Medical Centre	2a Waipapa Avenue	03 329 4402	
Godley House Cafe	2e Waipapa Avenue	03 329 4880	<a href="http://www.godleyhouse.co.nz">www.godleyhouse.co.nz</a>
Orton Bradley Park	Marine Drive	03 329 4730	
Snowdrop Cottage Children's Store	Waipapa Avenue	03 329 4464	Open 7 Days 9.00am - 5.00pm
Shunyata Retreat   Day Spa	10 Rawhiti Street	03 329 4773	<a href="http://www.journeyessence.com">www.journeyessence.com</a>
Thrive: Chiropractic, Acupuncture, Nutrition	Private Address	03 329 3254	Mark and Lou Warren

## Governors Bay

At Home Childcare Limited	18 Bay Heights	03 329 9970	Neave Ross-Wallace
Governors Bay Hotel	52 Main Road	03 329 9433	
She Chocolat	79 Main Road	03 329 9825	
Living Springs	Bamfords Road	03 329 9788	

# “bite size”

fresh n fabulous places to dine

April 2013

## Brunch

Chalfont Cafe	2 Waipapa Avenue	Diamond Harbour	03 329 4854	9am Monday to Saturday
Coffee Culture	18 London Street	Lyttelton	03 328 7080	8am Open Every Day
Freemans Restaurant	47 London Street	Lyttelton	03 328 7517	9am Saturday   10am Sunday
Godley House Cafe	2e Waipapa Avenue	Diamond Harbour	03 329 4880	9am Wednesday to Sunday
Governors Bay Hotel	52 Main Road	Governors Bay	03 329 9433	8am Open 7 Days
Port View Restaurant	23 Dublin Street	Lyttelton	03 328 8740	9am Saturday   9am Sunday
SAMO Coffee	3 Canterbury Street	Lyttelton	Private No.	8am Open 7 Days
She Chocolat	79 Main Road	Governors Bay	03 329 9825	10am Weekdays   9am Weekends

## Lunch

Chalfont Cafe	2 Waipapa Avenue	Diamond Harbour	03 329 4854	Monday to Saturday
Everest Indian Restaurant	2 London Street	Lyttelton	03 328 8185	Open Every Day
Fishermans Wharf	39 Norwich Quay	Lyttelton	03 328 7530	Tuesday to Sunday
Freemans Restaurant	47 London Street	Lyttelton	03 328 7517	Saturday   Sunday
Godley House Cafe	2e Waipapa Avenue	Diamond Harbour	03 329 4880	Wednesday to Sunday
Governors Bay Hotel	52 Main Road	Governors Bay	03 329 9433	Open Every Day
Irish Pub	17a London Street	Lyttelton	03 328 8085	Open Every Day
Lyttelton Bakery	6 Norwich Quay	Lyttelton	03 328 9004	Monday to Saturday
Porthole Bar	40 London Street	Lyttelton	021 328 977	Open Every Day
Port View Restaurant	23 Dublin Street	Lyttelton	03 328 8740	Wednesday to Sunday from 11am
Roots	8 London Street	Lyttelton	03 328 7658	Thursday   Friday
SAMO Coffee	3 Canterbury Street	Lyttelton	Private No.	Monday to Sunday from
She Chocolat	79 Main Road	Lyttelton	03 329 9825	Open Every Day

## Dinner

Everest Indian Restaurant	2 London Street	Lyttelton	03 328 8185	Parminder Singh
Fishermans Wharf	39 Norwich Quay	Lyttelton	03 328 7530	Tuesday to Sunday
Freemans Restaurant	47 London Street	Lyttelton	03 328 7517	Open Every Day
Godley House Cafe	2e Waipapa Avenue	Diamond Harbour	03 329 4880	Friday   Saturday
Governors Bay Hotel	52 Main Road	Governors Bay	03 329 9433	Open Every Day
Irish Pub	17a London Street	Lyttelton	03 328 8085	Open Every Day
Porthole Bar	40 London Street	Lyttelton	Private No.	Open Every Day
Port View Restaurant	23 Dublin Street	Lyttelton	03 328 8740	Wednesday to Sunday
Roots	8 London Street	Lyttelton	03 328 7658	Tuesday to Saturday
Tommy Chang's	48 London Street	Lyttelton	Private No.	Wednesday to Sunday

## Take Away

Everest Indian Restaurant	2 London Street	Lyttelton	03 328 8185	4pm - 8pm Every Day
Fishermans Wharf	39 Norwich Quay	Lyttelton	03 328 7530	11am - 8pm Tue to Sun
London Street Fish and Chips	34 London Street	Lyttelton	03 328 8819	11am - 8pm Every Day
Lyttelton Bakery	6 Norwich Quay	Lyttelton	03 328 9004	7am - 3pm Mon to Sat
Lyttelton Sea Foods	6 Norwich Quay	Lyttelton	03 328 7628	11am - 8pm Every Day
Port View Restaurant	23 Dublin Street	Lyttelton	03 328 8740	4pm - 8pm Wed to Sun

## BYO

Mondo Vino	42 Norwich Quay	Lyttelton	03 328 7744	10am Open Every Day
------------	-----------------	-----------	-------------	---------------------

## Create Your Own

Chalfont Cafe [General Store]	2 Waipapa Avenue	Diamond Harbour	03 329 4854	9am Open Every Day
Harbour Co-Op	12 London Street	Lyttelton	03 328 8544	9am Open Every Day
Lyttelton Farmers Market	On London Street	Lyttelton	03 328 9243	10am Every Saturday
London Street Dairy	34 London Street	Lyttelton	03 328 7358	8am Open Every Day

# “accommodation”

places to stay around the harbour

April 2013

## Lyttelton

- **Canterbury Street Apartment.** Fully renovated one bedroom apartment ideal for short term or holiday stay accommodation. Completely self contained with separate living space, kitchenette, bedroom and bathroom. Spread over two floors this furnished apartment will feel like a home away from home. Tariff from \$120 per night. Phone Gloria 03 328 7065 or mobile 022 073 0014.
- **Dockside Apartments.** Three private apartments enjoying harbour views and available for casual holiday or short term occupancy. Scenic and close to London Street, an ideal option for friends or family. Options range from studio; one bedroom or two bedroom apartment. Tariff from \$90 - \$120 per night. Phone Grant or Kathy 03 325 5707 or view more details online [www.dockside.co.nz](http://www.dockside.co.nz).
- **No.1 Apartment.** Warm two bedroom apartment with magnificent harbour views available for holiday or short term accommodation. Undercover parking. Tariff \$120 per night with minimum three night stay. Longer rates available on enquiry. Phone Linda 03 328 9128 or 021 254 4986.
- **Randolph Apartment.** Private two bedroom modern apartment with superb views across Lyttelton available for holiday or short term accommodation. Apartment features private spa, off street parking and all the mod-cons including WIFI. Tariff from \$120.00 per day, with minimum three night stay. Longer term rates available. Phone Heather 03 328 8585 or 03 328 8584.
- **The Rookery.** Built in 1866 The Rookery Bed and Breakfast is one of the oldest surviving local cottages, with wonderful panoramic views of the historic port town of Lyttelton. Three renovated rooms are available; one with ensuite facilities. Tariff from \$115 to \$160 per night. Phone Angus or Rene Macpherson on 03 328 8038 or view more details on line [www.therookery.co.nz](http://www.therookery.co.nz).

## Diamond Harbour

- **Bryneth's Cottage** located on Purau Avenue. Luxury room, queen bed and spa bath. cooked breakfast or brunch. Only available Friday to Monday \$200 per night. Phone 03 329 4728 or 021 315 609
- **Diamond Harbour Lodge** is the place to relax, enjoy and unwind. Harbour sea views, spacious rooms, TV/DVD, CD player, large selection of books, games, free wireless internet, fridge, microwave, under floor heating in bathroom, heated towel rail, linden leaves toiletries, towelling bath robes. Robyn and Pete Hedges 3 329 4005 or visit [www.diamondharbourlodge.co.nz](http://www.diamondharbourlodge.co.nz)
- **Manaaki Eco Farmstay Purau** offers self contained ensuite accommodation. One or two bedrooms with spacious fully equipped kitchen/living in a beautiful rural setting overlooking Purau Bay. Holiday (min 2 nights) or longer term rates available. Contact Wendy ph 329 3202 or view us online [www.ecofarmstaypurau.co.nz](http://www.ecofarmstaypurau.co.nz)
- **The Old Exchange Bed and Breakfast** right in the heart of the Village at 2 Waipapa Avenue. Two queen sized bedrooms with ensuite bathrooms, own private entrance, sea views and within walking distance of the Ferry. Contact Jill 03 329 4275 or mobile 027 482 6014.
- **Orton Bradley Park** offer self contained camper van sites for overnight stays. Services include 15 powered sites; treated drinking water; toilet blocks and dump site, with the golf club and tennis court next door. Fees start from \$15.00 per night for two persons, with additional adults at \$6.00 per night. Contact 03 329 4730.

## Governors Bay

- **Camellia Cottage Bed and Breakfast** is a self contained cottage in a lovely garden setting. Room \$110 per night double or \$75 per night for a single. Contact Faye, 30 Zephyr Terrace, Governors Bay 03 329 9119
- **Governors Bay Bed and Breakfast** offers a place to relax and rejuvenate on nine acres to bush side paradise beside the harbour. Furnished room with ensuite bathroom and separate sitting area also available for short term rent for those seeking emergency accommodation. For more details contact Eva on 03 329 9727, or view on line [www.gbbedandbreakfast.co.nz](http://www.gbbedandbreakfast.co.nz).
- **Governors Bay Hotel** restored to it's former glory and offers six guest rooms located on the first floor level. All rooms renovated with 32 inch flat screen televisions, queen size beds, free wifi, heaters and vanities. Four rooms with direct verandah access with views over the Lyttelton harbour. Contact 03 329 9433 or view more details on line: [www.governorsbayhotel.co.nz](http://www.governorsbayhotel.co.nz).
- **Governors Bay Studio** is an upmarket studio with ensuite, wifi, sky television, kitchenette. Located by the water and beach. Lovely garden setting. Bed and breakfast \$180 - \$200 per night. Preferable short stays 2-3 nights. Contact Rosie Belton 027 228 7019.
- **Living Springs** offer an array of accommodation options from fully service private rooms, studios, twin rooms, shared bunkrooms to outdoor camping. Also available are some powered caravan sites. All rooms are clean, comfortable and well maintained for your relaxation. Contact Living Springs on 03 329 9788 or view more details on line: [www.livingsprings.co.nz](http://www.livingsprings.co.nz).
- **Waitahuna** an 1850's Colonial Cottage fully restored and set in 4 1/2 acres of garden with waterfront access. Self catering accommodation in a lovely romantic setting. Breakfast supplies included in the tariff, fully equipped kitchen, double bedroom plus a modern sofa bed in the sitting room. Contact Gavin or Annabelle 03 329 9712 or 027 222 4604.



# “harbourvibe”

what's on around the harbour this week

April 2013

## 24 Wednesday

Plunket Play Group	10.00am	Lyttelton Main School	All Welcome. Andrea Solzer 328 9346
Community Garden	10.00am	The Portal, 54a Oxford Street	Shared lunch from 12.00pm
Marlon Williams [The Unfaithful Ways]	8.00pm	Porthole Bar, London Street	Live on Wednesday nights   Free Event

## 25 Thursday

ANZAC Day Parade and Service	10.00am	London and Canterbury Street	Lest We Forget the Fallen
Lyttelton Volunteer Fire Brigade	7.00pm	Lyttelton Fire Station	Weekly Training   New Members Welcome
Governors Bay Volunteer Fire Brigade	7.00pm	Governors Bay Fire Station	Weekly Training   New Members Welcome
Contra Dance Night	7.30pm	Private Address, Cass Bay	Contact Bill 03 328 8985   \$5
Kim Potter and the Vinyl Bums Exp	8.00pm	Wunderbar, London Street	Comedy Circus meets Character Stand up \$5
All Park Live Music Thursday	8.00pm	Porthole Bar, London Street	Live Music Thursday   Free

## 26 Friday

## 27 Saturday

Lyttelton Historical Museum Society	10.00am	Lyttelton Main School	All Welcome. Contact 03 328 8972
Lyttelton Art Market	10.00am	Cnr London and Oxford Street	Photography, Painting, Sketches and More
Lyttelton Farmers Market	10.00am	London Street, Lyttelton	Fresh produce; Live Music; Buskers and More
Lyttelton Garage Sale	10.00am	The Portal, 54a Oxford Street	Second Hand Bargains and More
All Seeing Hand/Seth Frightening Tour	9.00pm	Tommy Chang's, London Street	Band of Dense Beauty, Intense Live Show \$10

## 28 Sunday

Combined Church Service	10.00am	Union Church, Winchester Street	All welcome
Sunday School, A Vinyl Appreciation	3.00pm	Tommy Chang's, Lyttelton	Every Sunday   Free
Live Jazz Sundays	3.00pm	Freemans, London Street	Carmel Courtney Live   Free
St Josephs Worker Catholic Church	5.30pm	21 Exeter Street, Lyttelton	All welcome

## 29 Monday

Plunket Play Group	10.00am	Lyttelton Main School	All Welcome. Andrea Solzer 328 9346
LIFT Library - Film Evening	7.15pm	The Portal, 54a Oxford Street	Weekly Film Evening
Governors Bay Community Association	7.00pm	Governors Bay Fire Station	Contact Frances James 03 329 9560

## 30 Tuesday

Community House Shared Lunch	12.00pm	Comm.House, 7 Dublin Street	Make new friends
Lyttelton St John Youth Division	6.00pm	St John Ambulance Station	52 London St, Lyttelton
Artists Showcase Open Mic Night	7.30pm	Wunderbar, London Street	Sing, Play, Quote or Entertain

Lyttelton Harbour Review is proudly sponsored by:  
Lynnette Baird - Lyttelton's resident Professionals Real Estate Agent



Lynnette Baird | Licensed Real Estate Agent  
P: 03 328 7707 M: 021 224 6637  
E: [lynnette@realhomes.co.nz](mailto:lynnette@realhomes.co.nz)  
W: [www.realthomes.co.nz](http://www.realthomes.co.nz)



# Professionals

Kennard Real Estate Limited MREINZ  
[www.kre.co.nz](http://www.kre.co.nz)

