

# “lyttelton harbour review”

community news from port lyttelton to port cooper

www.lytteltonharbour.info

30 September 2013

E99



ONE OH  
SEVEN  
POINT  
SEVEN  
EFFEM



## Rotten Radio Lyttelton 107.1FM

OneOhSevenPointSevenEffem

Q: What does a business man, a radio enthusiast and a west coaster have in common?

A: The beginnings of Lyttelton's new community radio!

Who knew, but tucked down a dark alley and into a basement of deconstruction [or is that reinvigoration] you will find within the under belly of a famous Lyttelton building, a crew of radio enthusiasts finding their feet in the world of broadcasting.

Founding member Scott, or Scotty Rotten as he is called in the DJ world, says the dream of starting up a commercially free local radio station began to get traction when a mate knew a guy from the West Coast who tried to start up a punk rock station. Acknowledging punk rock was not going to be revived on the West Coast he came through to Lyttelton and gave Scott a transmitter, and that was all that was need to start Rotten Radio Lyttelton.

In true Lyttelton style, word around the grapevine spread and in a co-operative movement amongst other DJs the rest of the broadcasting gear started to come together. Collectively enough equipment was compiled to really get started. Then there was the matter of space, as the wives around Lyttelton banded together to claim back the family kitchens and lounges. A few conversations later with a few mates, ended with a generous offer of rent free space from a local business.

Fast forward six months and today Rotten Radio is free to air 24/7 with around fifteen volunteers taking up the challenge of creating regular shows albeit formed around a loose schedule. All the volunteers have full time employment, but they love the freedom of creating and compiling their shows to the audience they have. At the moment the transmitter can feed an area within a 20km line of sight from central Lyttelton, with reports that reception is picked up in Governors Bay and across the water in Diamond Harbour.

To say the music genres are varied, would be an understatement of the year, yet it is this diversity of volunteers and music preferences that will make this station a success. One day you might be listening to some great home grown music; the next a manic depressive vibe; or it might be Chinese rock; and even classical. Most of the volunteers are starting to run an evening show, with the recorded replay the following day. Every second Sunday you will be listening to classical music; on Wednesday nights it is pure New Zealand music.

Inside the cavern underground there is a hand drawn cartoon poster hanging onto the wall that lays down the few rules that volunteers need to abide by. Many of the comments and sketches cannot be repeated on this page, but suffice to say 'break it you replace it', 'do what you want' and 'don't unplug it' - sums things up for Rotten Radio.

If you see yourself as a bit of a DJ, and would like to get involved, drop Scott an email or phone him direct: 021 0285 8083 or [lytteltonretard@hotmail.com](mailto:lytteltonretard@hotmail.com). If you have trouble picking up the signal, try adjusting or fiddling with your aerial – any problems though, give Scott a call to see if he can help.

Article: Lyttelton Harbour Information Centre

Images: Phillip Baird, with thanks



LYTTELTON HARBOUR  
**INFORMATION CENTRE**  
PROVIDING QUALITY LOCAL AND VISITOR INFORMATION



**Professionals**

Kennard Real Estate Limited MREINZ  
[www.kre.co.nz](http://www.kre.co.nz)

# Interested in Gardens and Food

Get involved with the Garden to Table Project



How lovely to be invited by Diamond Harbour school to come and find out more about their Garden to Table food project. Gathered were mums, dads, grandparents, Diamond Harbour Garden Club members and other interested people. We were all split into small teams and we had the pleasure of being hosted by year 5 and 6 students Isabelle France and Ellie Rice.

The girls took us on a tour of the gardens highlighting all the special things they had been involved with. There was the herb spiral and the strawberry tower. The girls explained how the children tend the gardens every day.

Isabelle said "the best thing about this project is we all learn how to use a garden to grow food and then to create healthy lunches". Each week on Tuesday lunch is created from healthy food from the garden.

Our tour included an update on the chickens. The hen house has arrived however they are still waiting patiently for the hens to arrive the girls told us. "We need a safe run built for them before they arrive so that they can't get run over" said Ellie.

As we walked around the school we saw all the native plants that classes have planted to attract the birds and we visited the school orchard where in years to come students will be supplied with an abundance of fruits.

Invited guests were then all treated to a wonderful morning tea baked by the year 1 and 5 students. There was a wonderful parsley pesto on delicious bread, a beetroot and orange cake, savoury muffins and many other delicious things. We were all very impressed by the children's enthusiasm and pride in what they had created.

Eddie Norgate, the school principal, then gave us all more background on the project. "The project has been running for approximately two to three years. Helped by local champions Lisa Hurry, Jacqueline Newbound from Project Lyttelton, teachers and parents the project aims to teach our children how food grows and what to do with it" he said.

The concept is that lifelong skills are learnt from this project. Garden to Table forms an integral part of the school life and Eddie explained that it's essential that as key champions move on their roles are filled by other community helpers. The purpose of today's tour was really to introduce the wider community to the project and to see how they might like to help.

This is your invitation to help with this project at the school. Volunteers are sought to help with garden classes, kitchen classes, plant propagation and garden working bees. If you would like to get involved please contact Eddie Norgate [office@diamondharbour.school.nz](mailto:office@diamondharbour.school.nz) or call 03 329 4842.

Article and Image: Lyttelton Harbour Information Centre | Isabelle France and Ellie Rice

## Lyttelton Garden Club

Update on Spring Floral Display



During the week of the 12th, 13th and 14th of September the Garden Club held a Spring Floral Display in the Lyttelton Library.

Lyttelton Main School pupils with lovely hand made bookmarks also took part in the Spring Display. They made very colourful and impressive bookmarks with a spring theme.

We would like to thank our membership and the school children for their participation. Also the teachers for their support and the librarians for all they did to make it possible.

A raffle was held and we would like to thank Oderings on Linwood Avenue for the donations towards the raffle.

Raffle Winners: 1st Draw Ticket No 29 | Mrs K George 2nd Draw Ticket No 20 | Mrs P Owen Third Draw Ticket No 65 | Mrs G May

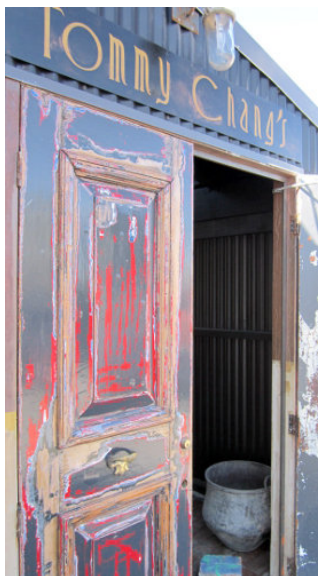
Thank you to the members of the public for your support. Lyttelton Garden Club meets on the fourth Wednesday of every month at 1.45pm in the Union Church. Contact: D Van der Meer 332 3283 or A Jolliffe 328 8917



LYTTELTON HARBOUR  
**INFORMATION CENTRE**  
PROVIDING QUALITY LOCAL AND VISITOR INFORMATION

20 Oxford Street, Lyttelton 8082  
P: 03 328 9093

E: [infocentre@lyttelton.net.nz](mailto:infocentre@lyttelton.net.nz)  
W: [www.lytteltonharbour.info](http://www.lytteltonharbour.info)



## Tommy Chang's

Seriously Good Food + More

With an understated double front door entry, and what can sometimes appear to open onto an abandoned courtyard over the colder months, the brave amongst us have discovered that by venturing toward the rear of the building, a quirky Lyttelton restaurant and bar reveals itself.

Internet review site Neat Places recently described Tommy Chang's as "possibly Lyttelton's best-kept secret. Everything it does, it does well, and it does just about everything. The décor is anything but generic, but rather that particular Lyttelton chic; eccentric furnishings, and even a classic motorcycle making for a cool and relaxed atmosphere."

Many residents probably do not realise that since re-opening at the start of 2013, the menu has evolved dramatically. Originally launching with a small plates styled menu, today there is diverse but not overly comprehensive range of full meals within a good range of prices. Beautifully presented and full of flavour the Chicken Laksa is a popular dish; and the quality of the beef burger with potatoes and aioli has been rated by some as the best burgers in Christchurch. All the meal portions would satisfy any hungry appetite. Tommy Chang's also caters for those with vegetarian preferences too.

Tommy Chang's is designed with various seating spaces to suit your mood. Convene in the courtyard with the gas tower heater, inside by the bar, or even tucked around the corner on a comfy sofa with the romance of candle light. Whatever the occasion, Tommy Chang's will delight with its quaint decor, friendly knowledgeable staff and eccentric Lyttelton style.

In recent months, Tommy Chang's have been working with Rotten Radio volunteers and can be heard broadcasting this new community radio station throughout the restaurant and bar venue. Every second Sunday afternoon from 3.00pm many of the community radio DJ volunteers take turns to run the Vinyl Appreciation Society from Tommy Chang's. Head along and see the DJ's live in action.

**Tommy Chang's, 48 London Street, Lyttelton**

**Phone 03 328 9141**

**Open Wednesday to Sunday**

Article and Image: Lyttelton Harbour Information Centre  
Reference: [www.neatplaces.co.nz/place/tommy-changs](http://www.neatplaces.co.nz/place/tommy-changs)

## Lyttelton Merged School

Appointment of Principal Designate

Tena koutou. The Appointed Board of Trustees for the Lyttelton Merged School is pleased to announce the appointment of Diana Feary as Principal Designate for the Lyttelton Merged School. The Board are confident that Diana has the right combination of leadership skills, knowledge, and experience to lead the new school.

There are significant challenges ahead for the Board of the Lyttelton Merged School and we look forward to the contribution that Diana will make in achieving these goals. Although Diana will start working with the Appointed Board of Trustees immediately she will become Principal of the Lyttelton Merged School on May 5 2014.

Diana grew up in rural Mid Canterbury. She taught in schools in Ashburton and Christchurch before moving to Wellington when she became assistant principal and then deputy principal at Karori Normal School. Diana and her husband Jeff were very pleased to return home to Christchurch when Diana was appointed as Principal at Lyttelton West School. Diana has enjoyed the maths professional development initiative with Lyttelton Main which has provided the opportunity to work with Sue Walls and her staff.

The Board's next step will be to confirm staff appointments. The Board are conscious of the community's concerns regarding the interim school sites. We will continue to look at options and consult on this issue. We will also be looking for a new school name so please contact us if you have any suggestions.

We have also created a website and Facebook page to facilitate our ability to communicate. Please visit us at:

- <https://sites.google.com/site/lytteltonschoolmerger/>
- <https://www.facebook.com/LytteltonEmergingSchool>

Nga mihi nui.

Tom Scollard

Chairman of the Appointed Board of Trustees

**Lynnette Baird** Licensed Real Estate Agent  
P: 03 328 7707 M: 021 224 6637

E: [lynnette@realhomes.co.nz](mailto:lynnette@realhomes.co.nz)  
W: [www.realhomes.co.nz](http://www.realhomes.co.nz)



# Professionals

Kennard Real Estate Limited MREINZ  
[www.kre.co.nz](http://www.kre.co.nz)

# contact the lyttelton harbour review

The team at the Lyttelton Harbour Review would love to spread the word about your community group, fundraising efforts, local heroes, business promotions, events and anything else that the local community would like to share. Phone, Email, or Post: Lyttelton Harbour Review, PO Box 94, Lyttelton 8841. **Deadline for any content: Thursday before Monday publication date.**

Lynnette Baird	03 328 7707	021 224 6637	lytteltonreview@gmail.com
Wendy Everingham	03 328 9093	021 047 6144	lytteltonreview@gmail.com

## World's Largest Drawing Festival

Taking Place Right Here in Lyttelton

Lyttelton's Tin Palace is the first and only venue in New Zealand to be taking part in the world's biggest drawing campaign this October.

The Big Draw runs from 1st to 3rd November in over 1000 venues across 15 countries with over 200,000 people expected to take part. The Big Draw connects people of all ages with museums, galleries, outdoor spaces, artists and each other. The events are for those who love to draw and those who think they can't.

The Tin Palace has organised, "Drawn Together", a group exhibition which runs from 10 - 20 October. The exhibition features work by artists James Robinson, Julia Holden, Tony Piggott, Vivienne Bashford and Michael Springer. At the same time, the Tin Palace want visitors who come to the exhibition to create a drawing for display.

As curator, Anne Mortimer explains "we are very excited to be participating in the Big Draw. A lot of people develop self-limiting beliefs that they can't draw and this stops people from taking part in a relaxing, absorbing and creative activity. We want to encourage people to come and see our drawing exhibition and then to take part by creating a drawing for us and by taking part in our daily drawing challenges on our Facebook page (Tin Palace, Lyttelton)."

Events and activities at the Tin Palace:

- Wednesday 9 October 5:30pm Drawn Together opens
- Friday 11 October 7:00pm Artist talk with James Robinson
- Saturday 12 October 10-12 Draw a chalk path from London-Oxford Street down to the door of the Tin Palace.

Article: Tin Palace | Media Release, 26 September 2013



## St John and Time Banking

History in the Making

Last Monday evening was a significant milestone in the life of St John and the Lyttelton TimeBank. TimeBank Co-ordinator Wendy Everingham and St John Paramedic Gen de Spa visited the local area committee and after some robust discussion walked away with the Banks Peninsula Branch of St John signing up to TimeBanking!

St John, a charitable organisation is made up of multiple area committees all over the country. These committees work together with the national office to deliver St John services throughout New Zealand communities ensuring that local services meet local needs. Our area committee can lay claim to the first in New Zealand to give TimeBanking the green light. After our presentation the committee all came to the same conclusion. They had nothing to lose by joining the scheme.

We explained that there are no costs involved and no extra work on their behalf. All that is required of them is to give their volunteers the option of joining the TimeBank. St John can earn back time credits with the free first aid courses and meeting room space they currently offer the community. TimeBanks, just like a bank consist of debits and credits. To function they require both parties to participate. This is referred to as reciprocity. Some people have to give and other have to receive. For St John volunteers who choose to sign up to the scheme they will become eligible for "banking" their St John volunteer hours at the TimeBank. Hours banked can then be traded for services from the over 500 members who currently participate in the Lyttelton TimeBank. Volunteer retention has been identified as an issue for St John. It is our belief that for some volunteers this volunteer incentive will prove a positive incentive for remaining a volunteer within St John.

Gen de Spa is thinking even bigger about the possibilities of TimeBanking and St John. As a front line staffer she is also aware that many of the non-emergency ambulance call-outs happen as a result of social isolation. Her vision is that GPs might give some patients a 'social prescription' to the Timebank in the same way they now give 'green prescriptions' for exercise. Working together, St John, local TimeBanks and other health professionals could enhance community and individual well-being, gradually reducing demand on health service resources, including ambulance. Gen has big plans for TimeBanking to be part of every St John through out the country. Getting the Banks Peninsula committee signed up to trial the system is her first big step in the right direction to getting Time Banks a key part of St John New Zealand wide.

Article: Project Lyttelton Time Bank | Image: Thumbs up from the Banks Peninsula Area Committee of St John. Committee members include John Fitzgerald, Treasurer Colleen Elder, President Pete Dawson, Volunteer Co-ordinator Anna Smith, Station Head Mike Capon, Advanced Paramedic Kris Gagliardi and Gen de Spa.

# Lyttelton market town

Saturday mornings are never dull in Lyttelton! Enjoy the local markets including the Lyttelton Farmers Market for fresh produce, meat, fish, eggs, honey and yummy baked goods. Check out the Lyttel Arts Space at No.6 London Street. Head up to the Grassy Art and Craft Market for bargain items or unique art items. And be sure to check out the Community Fundraising Garage Sale located up the driveway behind the swimming pool. Its all here on Saturday mornings from 10.00am to 1.00pm, so where else would you want to be!

## Reconnect - Heritage Trail Includes Lyttelton Icons

Heritage enthusiasts will soon have the opportunity to reconnect with heritage buildings and places around Canterbury in a one-off event. Co-ordinated by the Christchurch City Council, Reconnect: experience heritage will be held over three days from October 18-20th 2013, offering locals and visitors the chance to revisit the city and peninsula's heritage following the earthquakes.

The event will kick off with a one-day forum on Friday October 18th, co-ordinated by the New Zealand Historic Places Trust. A range of speakers will discuss heritage repair and recovery issues. Including Brendan Smyth and Victoria Bliss who will discuss the repairs to their notable Cunningham Terrace home (circa 1876) following substantial damage in the earthquakes. Their two-storey, timber framed carpenter gothic style house, possibly designed by Samuel Farr, was the former home of Peter Cunningham, a prominent Lyttelton figure of the 1880's. And, volunteer fire fighter, Lyttelton Museum Society Member, and urban planning lecturer, Roy Montgomery organised the 'rescue' of the Lyttelton Museum collection by the Lyttelton Volunteer Fire Brigade in the weeks immediately following Feb 22nd. Roy will provide a de-brief on disaster planning for museums from the perspective of a small museum that hadn't done any disaster planning!

Then, over the weekend of October 19th and 20th, a host of heritage walks and tours will be held throughout Christchurch and Banks Peninsula. The Council will run its own series of guided walks and tours to update the community on a selection of its heritage assets, while each heritage group or building owner will manage their own event:

### Open House: Grubb Cottage

Open: 10am-12pm Sat 19 Oct 2013

Members of the Grubb Cottage Trust will be on site to provide guided tours of the cottage, which dates from 1851, and discuss the work done to conserve this heritage building. Admission is free, no prior booking needed, open to public.

### Exhibition: Jae Renaut's Lyttelton: a photographic exhibition of Lyttelton heritage buildings.

Lyttelton Library, 14 – 25 Oct 2013

Christchurch City Libraries invite you to view an exhibition of Lyttelton's heritage buildings which will be on display in the form of digital reproductions of Jae Renaut's original silver gelatine prints. These original photographs were taken between 1980-1981 and represent a mixture of residential and commercial buildings. Admission is free, no prior booking needed, open to public.

### Open Day: Lyttelton Tennis Club

Open: 11am-1pm Sat 19th Oct 2013

Find out about the small wooden building on the site of the Lyttelton Tennis Club which is over 90 years old. It has recently undergone renovation and strengthening, with assistance from the Vodafone Foundation and the Christchurch City Council. Admission is free, however donations are greatly appreciated, open to public, no bookings required, not suitable for disability/wheelchair access due to stairs.

### Orton Bradley Park

Open: 8 am to 5.30 pm Sat 19 Oct 2013

Orton Bradley Park is situated in Charteris Bay on the southern side of Lyttelton Harbour, 25km from central Christchurch. The Park consists on a number of Heritage buildings, including a water wheel powered mill house and electric generation shed from the 1880's, a blacksmiths shop, stables, dairy, 1870's school house, and a stone cottage built in 1848. Admission is free, open to public, no prior bookings required.

Helen Beaumont, Natural Environment and Heritage Unit Manager at Christchurch City Council, says Canterbury still has a great wealth of heritage. "It's been really exciting to see all sorts of heritage offerings join the line-up to take part. We're looking forward to releasing the programme and letting people see the fascinating few days of heritage connection the city and Peninsula has in store."

Please email [heritageevent@ccc.govt.nz](mailto:heritageevent@ccc.govt.nz) with any queries.

<http://www.ccc.govt.nz/cityleisure/artsculture/christchurchheritage/CallingLocal.aspx>

## Grubb Cottage AGM

Tuesday October 1, 5.30pm at Grubb Cottage

# about the lyttelton harbour review

Lyttelton Harbour Review is a community newsletter initiative developed by local Professionals real estate agent Lynnette Baird and Lyttelton Harbour Information Centre chairperson Wendy Everingham. The objective of the Lyttelton Harbour Review is to help keep local residents informed with what is going on in the wider Lyttelton Harbour community. Each week readers can read about community groups; businesses; events; and everything in between. If you have an event, topic, cause, or other, that you would like to share with the harbour community, then we would love to hear from you. Be heard, be seen, be informed - read it or offer it here.

## Christchurch Retaining Walls Group

A website has been set up as a point of contact for people in Christchurch who are having issues with retaining walls. If you would like to join the group, you can visit their web site and complete an online contact form. The only criteria for joining the group, is that you have a retaining wall of any type protecting your property, or which is your responsibility. The purpose of our group is to share information regarding EQC retaining wall settlements. For more information read some of the stories on the website. And if you know how EQC are calculating Indemnity Value, please get in touch! [www.retainingwalls.kiwi.nz](http://www.retainingwalls.kiwi.nz)

## LIFT Library

The season is advancing, and the local bellbirds are singing before 5.00am these days! I couldn't resist buying this new book for LIFT: ideal for those who want ideas on developing more local food production, supporting our Harbour Resilience Project, and for those who love trying out new recipes using local products:

### Get fresh with Al Brown 2012

Al Brown

This book is based on the TV One series, where Al Brown and his 'Lux' ute, with cooker, condiments and shelter, travelled through ten provinces of New Zealand, recording scenery, people, horticulture, farmers markets, and local produce. In each area, he then produced a three-course meal of locally provided ingredients. All this is captured in excellent photographs and detailed text, often with humour. Unfortunately, his plan to feature the Lyttelton Farmers Market was foiled by the February 2011 quakes, but he managed to film the Riccarton Market. There he featured some that we have at Lyttelton, so it's a delight to read the details of Gruff Junction with Ev and Anna Moorhead's goats cheese, and Cam at his Grown market garden, and Caddie Gardens of Horotane Valley; and you'll probably recognise Canter Valley's ducks and Cracker of a Nut's walnuts. (Gruff Junction cheeses and Cracker of a Nut's walnuts and walnut flour can be bought at the Harbour Coop.) The wealth of information on food production all over New Zealand may well stimulate readers to develop more lines of produce. As for the meals, well, they all look and sound really inviting, and well worth a try if you like creating healthy meals from local products. And there's a CD featuring local musicians in each region.

### A Beginner's Guide to the Geology of the Geraldine District

Glenn Vallender [disk]

The information in this .pdf is not limited to the Geraldine district – only the last quarter is specifically on that area. Again, those with a background in geology will appreciate it most, but those simply interested in how New Zealand was formed, and all the kinds of rocks created, as well as landscapes, will find a lot of interest too.

And today's quote: The people who row the boat generally don't have time to rock it.

To become a member of the LIFT Library, based right here in Lyttelton, contact Juliet Adams on 03 328 8139 or mobile 021 899 404, for more information.

## Civil Defence: Get Ready Week End September 2013

The tagline for Get Ready Week in 2013 was "Know your neighbours, know your community". It's a great opportunity for all New Zealanders to - if you don't already - get to know your neighbours, and make a plan to help one another Get Ready, Get Thru.

In New Zealand, the Ministry of Civil Defence & Emergency Management, working in collaboration with Civil Defence Emergency Management (CDEM) Groups around the country, promoted a week of activities aimed at raising awareness of potential hazards and the need to be prepared.

We have developed a range of online materials and resources that you can print out or provide electronically to help promote preparedness, and encourage businesses in your community, neighbours, families and friends to help one another to Get Ready.

Get Ready Week is being supported by an ongoing national advertising programme and social media messaging, and reinforced by local and regional community based activities.

Every year since the early nineties, the United Nations has organised a World Disaster Reduction Campaign, which culminates on International Disaster Reduction Day, the second Wednesday of October. In New Zealand, we have promoted this as Get Ready Week. In 2013, we have brought forward Get Ready Week to 23-29 September, so schools can take part.

From the Ministry of Civil Defence web site.

# subscribe to the lyttelton harbour review

The Lyttelton Harbour Review is published every Monday and can be delivered straight to your email inbox. Just send an email with the words "subscribe me" in the subject line, then sit back and wait for the next instalment of local news, events and reviews. If you do not have access to email, but would like read about our local events, Professional Real Estate print hard copies that are available from Thursdays at the Lyttelton Club; Samo Coffee, Fisherman's Wharf, Lyttelton Library and at the Lyttelton Harbour Information Centre on London Street. Or a copy can be delivered to your door, if you live in within the Lyttelton township: Contact Lynnette on 03 328 7707.

## Governors Bay Hotel

Sunday 6, 3.00pm

Black Velvet Ban

Free Event

## Lyttel Book Fair

Saturday October 5, 10.00am—2.00pm

At the Lyttelton Garage Sale on Oxford Street, located behind the swimming pool

## Lyttelton Club

Every Friday, 7.00pm

Live Music

Free Event

## Lyttelton Harbour Kura Festival

Starts Saturday 28 September to Sunday 6 October

More information visit [www.lyttelton.net.nz/festivals/kura-festival-of-learning](http://www.lyttelton.net.nz/festivals/kura-festival-of-learning)

## Porthole Bar

Wednesday 2, 8.30pm

Hannah Harding Live

Free Event

Thursday 26, 8.30pm

Taos Trio

Free Event

## Tommy Changs

Sunday 6, 3.00pm

Fortnightly Vinyl Sunday School

Free Event

## Wunderbar

Tuesday 1, 7.30pm

Artist Showcase and Open Mic Night

Free Event

Wednesday 2, 8.00pm

Adam McGrath and Jess Shanks

Saturday 12,

Anna Coddington

## Pilates Class in Lyttelton

Starts October 16th. Instructor Caroline Parker. Naval Point Club. Wednesday at 9.30am. Contact Caroline 027 676 0906.

## c'mon get involved

Lyttelton is known for its culture of volunteer activity and community participation. If you have ever had the thought that you would like to be more involved in the local community, but you are not sure where to go, or who to talk to? Start by having a conversation with the team at the Lyttelton Harbour Information Centre, as they can give you some advice on the many types of great volunteer organisations here in Lyttelton. If you are passionate about elderly care, sustainability, youth culture, harbour activities, heritage, radio, business development, fundraising, or just about anything - then there is a group who would love for you to be involved!

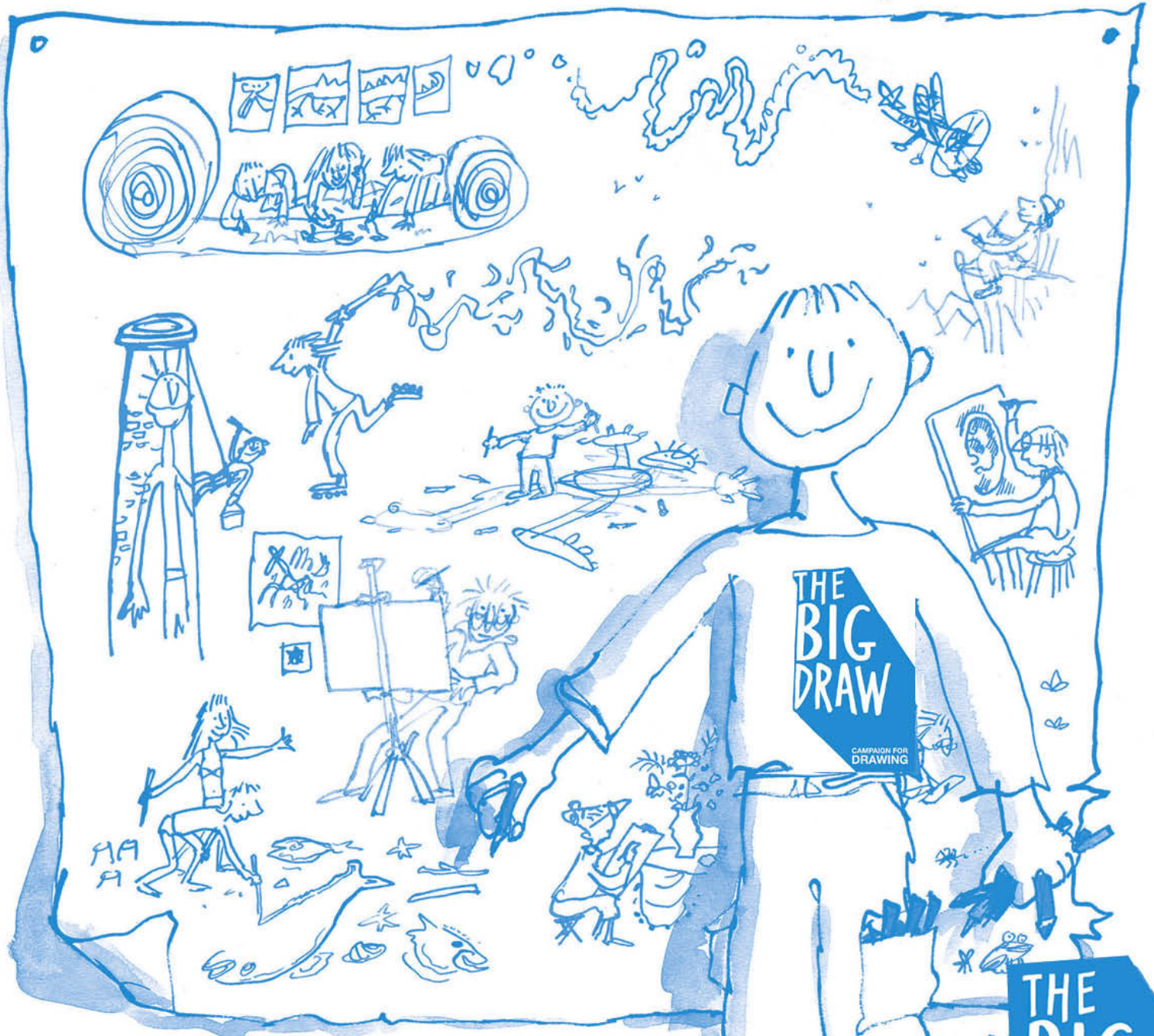
**FROM 10 OCTOBER:**

**Visit the exhibiton:** "Drawn Together" & **create your own drawing** for display  
10 - 20 OCTOBER, Thurs/Fri 11-3, Sat/Sun 10-4

**Come and draw a path** from London & Oxford St. to the Tin Palace  
12 OCTOBER, SAT 10-12

**Join our on-line drawing challenges** on Facebook: Tin Palace Lyttelton

Activities for **THE BIG DRAW** here in **Lyttelton!**



**TIN PALACE**

13a Oxford St  
Lyttelton

[www.tinpalace.co.nz](http://www.tinpalace.co.nz)

 Tin Palace Lyttelton

**THE  
BIG  
DRAW**

harbour **arts** COLLECTIVE

CAMPAIGN FOR  
DRAWING



# PORT VIEW RESTAURANT

Great Food : Great View : Great Place

ABSOLUTE DUO  
SEPT 20 | 27

FRIDAY NIGHT  
**LIVE**

**FREE LIVE MUSIC  
EVERY FRIDAY  
7.00PM 'TIL LATE  
SEPT.OCT.NOV**

Book a table and dine in on Friday nights for a delicious meal, and go into the draw to win a \$25 meal voucher and a bottle of wine. Bookings 03 328 8740.

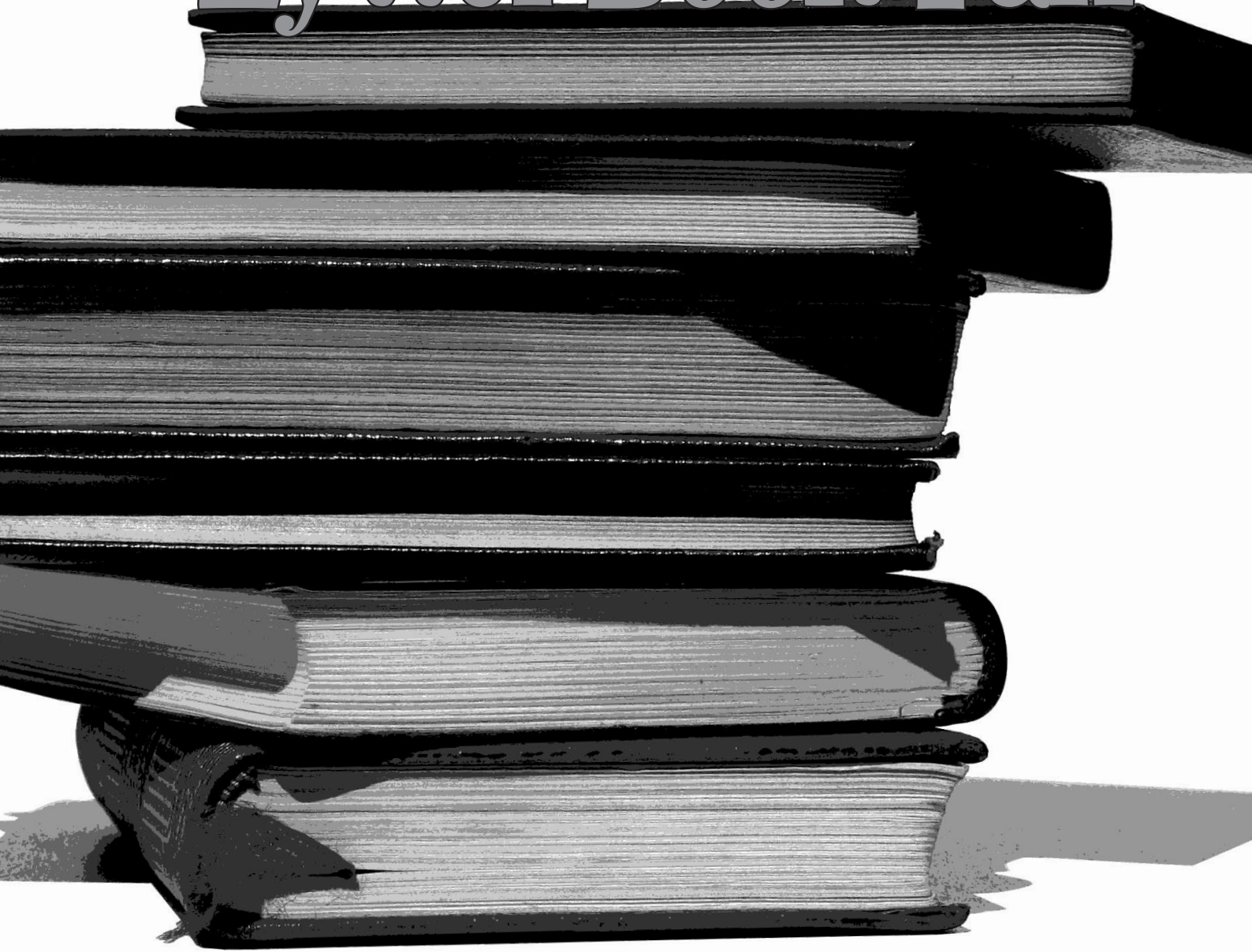
---

Lyttelton Top Club, 23 Dublin Street  
where everyone is welcome

---

Must be a club member or affiliated member to claim draw winnings.  
To join the friendly club, ask us about membership options when you visit.  
Entertainment Supplied By: CherDoy! Promotions

# Lyttel Book Fair



**Saturday, 5 October**  
**10am-2pm @ the Garage Sale**



Peek Exhibition  
design & display since 1927

## Works Notice – Reserve Terrace, Lyttelton, ground service investigation

**What:** Ground and service investigation work.

**Where:** Reserve Terrace.

**When:** Monday 30 September for approximately two weeks.


**Traffic Impact:** Reserve Terrace will be closed between 9am to 4pm. There will be a detour in place via Randolph Terrace.

### Where we are working



Sourced from LINZ data, Crown Copyright reserved

**Key—**

 Work site

### What we are doing

As part of the infrastructure rebuild we need to gather information about earthquake damage to the retaining wall. These investigation works on Reserve Terrace will include a series of small boreholes. These investigations are only the start of the rebuild process. The actual rebuild of infrastructure may be some time away.

## Traffic Impacts:

- Reserve Terrace will be closed between 9am to 4pm. There will be a detour route via Randolph Terrace.
- Please contact Fulton Hogan on 0800 277 34 34 if you have any specific access requirements that we need to consider e.g. nurse/doctor visits, Meals on Wheels, or planned works on your property.
- There will be no on-street parking available immediately adjacent to the worksite. Signage will indicate where parking will not be permitted.
- There will be a temporary 30km/h speed limit in place through the worksite area.



Sourced from LINZ data, Crown Copyright reserved

Key:  Work site  Detour route

## General Impacts:

- There will be increased noise, dust and vibration levels associated with this work, and the use of trucks and drilling machines will be necessary.
- Please observe the cones and barriers around the construction area and take care when leaving or returning to your driveway.
- All works are subject to favourable weather and on-site construction conditions.
- Works will take place between 7.00am and 6.00pm, Monday to Friday, with Saturday work if required.
- Works will have no planned impact on wastewater or gas services. However, the network is still fragile so please be prepared in case there is an unexpected service cut off.
- Work may require a short power outage. If this is required we will give you advanced notice before any work is carried out to these services by a door knock.

## Need more information?

Phone: 0800 277 34 34 (8.30am- 5.00pm Monday - Friday)

Email: [rebuildinfo@fultonhogan.com](mailto:rebuildinfo@fultonhogan.com)

Website: Visit [www.strongerchristchurch.govt.nz](http://www.strongerchristchurch.govt.nz)

Follow us on Twitter: [twitter.com/scirt\\_info](https://twitter.com/scirt_info)

Find the quickest and safest routes around Christchurch at [www.transportforchristchurch.govt.nz](http://www.transportforchristchurch.govt.nz)

If you are not the owner of this property, please pass this notice onto your landlord or property manager.

Email: [info@strongerchch.co.nz](mailto:info@strongerchch.co.nz)  
[www.strongerchristchurch.govt.nz](http://www.strongerchristchurch.govt.nz)



Visit our website and sign up to receive our e-newsletter for the latest information.  
Follow us on Twitter @SCIRT\_info

 **Fulton Hogan**

**Christchurch**  
City Council 

**New Zealand Government**

# “c'mon get involved”

volunteering to build a stronger community

October 2013

## Lyttelton Harbour

### Community Garage Sale

All donations of good used, or new, household items greatly accepted at Project Lyttelton 54a Oxford Street. Please do not donate items that cannot be sold, as this increases our costs trying to take unwanted items to the charity barn, or worse still the rubbish depot.

### Governors Bay Pre-School Music

Preschool music classes run on Thursday mornings during school term, 9:15 - 10am in the Governors Bay School library. Come and join us for singing, dancing and musical games. Cost \$3.50. All under 5s welcome, please bring a grown-up with you. Contact Mel Dixon 329 9908.

### Lyttelton Community Association

New members welcome. As an issues based organisation, we do not hold regular meetings. If you would like to be advised of when the next meeting will be held, or have an issue to discuss, please email us at [LCAssn@vodafone.co.nz](mailto:LCAssn@vodafone.co.nz) or phone Ken Maynard 03 328 9553.

### Lyttelton Community House

Meals for the elderly continue to be prepared and delivered daily. If you know of any elderly residents who need this service, or would like to volunteer to assist, please contact Christine or Courtenay 03 741 1427.

### Lyttelton Harbour Basin COMMUNITY Civil Defence

New members welcome. Meets every third Wednesday of the month 7.00pm - 9.00pm at Lyttelton Main School. To become involved contact the acting Lyttelton leader Wendy Everingham 03 328 8359 or 021 047 6144 .

### Lyttelton Harbour Business Association

For more details visit: [www.lytteltonharbour.co.nz](http://www.lytteltonharbour.co.nz)

### Lyttelton Harbour Information Centre

Monday to Saturday 10.00am to 4.00pm; Sunday 11.00am - 3.00pm.

### Lyttelton Harbour/Whakaraupo Issues Group

Focus is to improve the natural environment and habitat of the harbour and harbour basin. Meetings are every second month. All welcome. Contact Claire Findlay (Chair) 03 328 8930, Melanie Dixon (Support) 03 329 9908 or visit [www.ecan.govt.nz/lhwig](http://www.ecan.govt.nz/lhwig)

### Lyttelton Lions

Meet on the 2nd Tuesday of each month at Community House at 7.30pm. Anyone interested in becoming involved, or anyone who would like to learn more about this organisation, is most welcome. Contact Mary Jamieson 03 328 8523 or Dave Evans 03 379 6675.

### Lyttelton Historical Museum Society

Lyttelton Museum committee is developing a concept plan for the re-building of Lyttelton Museum . Meetings held once a month. New members, donations or any other support is welcomed. Lyttelton Museum, PO Box 95, Lyttelton. 328 8972 [lytteltonmuseum@xtra.co.nz](mailto:lytteltonmuseum@xtra.co.nz)

### Lyttelton Reserves Management Committee

Reserves Committee meets on a regular basis to make decisions about the management of the reserves. It organises weed control and planting programmes that include public and schools planting days. To be involved email the group at [reserves@lyttelton.net.nz](mailto:reserves@lyttelton.net.nz).

### Lyttelton Time Bank

Located within the Lyttelton Harbour Information Centre, 20 Oxford Street, open from 10.00am to 4.00pm, Monday to Friday. Or contact via email [timebank@lyttelton.net.nz](mailto:timebank@lyttelton.net.nz) or phone the Information Centre on 03 328 9093.

### Lyttelton Toy Library

Now at 25 Canterbury Street. Sessions every second Saturday 10.00am to 12noon. Range of 500+ toys for children aged 0-5 years. Toys large and small, ride-ons, puzzles, games and dress-ups to borrow. Join anytime \$42.00 per year. Toy Librarian: Kimberly 03 384 8400 .

### Lyttelton Volunteer Fire Brigade

Meets for training and maintenance every Thursday night from 7.00pm at the temporary station in London Street. If you are interested in joining, then pop on in.

### Lyttelton Youth Centre

Youth Centre/Community House, 7 Dublin Street, Lyttelton. Contact Christine 03 741 1427 for further details.

### Plunket Playgroup

The Plunket Playgroup can be found at Lyttelton Main School, every Monday and Wednesday, 10.00am to 12noon. 50 cents donation and everyone is welcome. Contact Kirsty 021 234 3689.

### Project Lyttelton

The Portal, 54a Oxford Street, Lyttelton [located behind the Swimming Pool]. Office 03 328 9243.

# “business directory”

support our local businesses

October 2013

## Lyttelton

Abbraccia Bellydance	41 Voelas Road [West School]	03 328 8883	Paige 021 999 848
Acupuncture Therapy	18 Oxford Street	03 328 9053	Robin Kerr
Alexander Technique	Private Address	03 328 8968	Belinda Walker
Alterations and Ironing Service	Oxford Street	Private No.	Wendy De Backer 021 0288 1466
Bank of New Zealand	56 London Street	0800 80 04 68	Trish, Kelly, Donna
Banks Peninsula Accounting	PO Box 83, Lyttelton	03 328 7231	Chris 021 280 0086
Beauty by Carly	Private Address	Private No.	Carly 021 294 5676
Bells Pharmacy	50 London Street	03 328 8314	
Body Kinetics - Gym   Fitness	Oxford Street	03 328 7002	Jen 027 204 1224
Christchurch Council Service Centre	15 London Street	03 941 8999	Debbie/Patricia
Christchurch Yoga	Private Address	03 328 8889	Rebecca 021 071 0336
Civil and Naval	16 London Street	03 328 7206	Open 7 Days 11am to late
Coastal Living / Picture Framers	34 London Street	03 328 7350	
Coffee Culture	18 London Street	03 328 7080	
Dandy Designs - Web Business Develop	Private Address	03 328 8646	dana@dandydesigns.co.nz
Diamond Harbour Ferry	B Jetty, Lyttelton Wharf	03 328 9078	
Dockside Apartments	22 Sumner Road	03 325 5707	Grant / Kathy
Everest Indian Restaurant	2 London Street	03 328 8185	Parminder Singh
Fishermans Wharf	39 Norwich Quay	03 328 7530	Friday to Sunday
Freemans Restaurant	47 London Street	03 328 7517	
Frog Web Works	14 Winchester Street	Private No.	Graeme 027 473 5018
God Save The Queen	33 London Street	03 328 9493	Wed-Sun 10.00am to 4.00pm
Ground   Gourmet Foods, Catering	Lyttelton Farmers Market	022 476 8633	<a href="mailto:info@ground.co.nz">info@ground.co.nz</a>
Harbour Co-Op	12 London Street	03 328 8544	
Harris & Turner	8 London Street	03 328 7358	Mon - Sat 10am to 6pm
Hands on Health   Nutrition Massage	Private Address	Private No.	Rebecca 027 494 6349
Himalaya Design	20 London Street	03 328 7600	Open 7 Days 10am - 4pm
Home Based Child Care	Private Address	03 328 7217	Marcia 021 236 1682
Home Based Education	Private Address	03 328 9229	Jen Skjellerup
Irish Pub	17a London Street	03 328 8085	Ross, Janet, Roger and Sandy
Jack Tar Sailing	West Side, No.7 Wharf	03 389 9259	Mike Rossouw
Land Arch Landscape Architects	13 Exeter Street	03 328 8882	<a href="mailto:dan@landarch.co.nz">dan@landarch.co.nz</a>
Learn 2 Sail - Dudley Jackson	Cressy Terrace	0800 724 5464	<a href="http://www.learn2sail.co.nz">www.learn2sail.co.nz</a>
Leslies Bookshop	18 Oxford Street	03 328 8292	
London Fish and Chips	34 London Street	03 328 8819	
London Street Books	Pending New Location	03 328 8088	
London Street Dairy	34 London Street	03 328 7358	Open 7 Days
Lyttel Beauty	32 Voelas Road	03 328 7093	<a href="http://www.lyttelbeauty.co.nz">www.lyttelbeauty.co.nz</a>
Lyttelton Bakery	6 Norwich Quay	03 328 9004	
Lyttelton Builders Limited - Office and Yard	16 Canterbury Street	03 328 9305	Peter Tocker 021 862 537
Lyttelton Harbour Information Centre	65 London Street	03 328 9093	
Lyttelton Library	35 London Street	03 941 7923	
Lyttelton Health Centre	18 Oxford Street	03 328 7309	
Lyttelton Physiotherapy	18 Oxford Street	03 328 8111	
Lyttelton Recreation Centre	25 Winchester Street	03 941 5656	
Lyttelton Sea Foods	6 Norwich Quay	03 328 7628	
Lyttelton Service Station	1 Canterbury Street	03 328 8749	
Lyttelton Shuttle	Airport, Tours, Anywhere	Private No.	Linda 021 254 4986
Lyttelton 'Top' Club	23 Dublin Street	03 328 8740	

# “business directory”

support our local businesses

October 2013

## Lyttelton [continued]

Mac Todd Solicitors	50 London Street	03 328 9992	Ray Blake 021 43 66 50
Maids of Ink	31 London Street	03 328 9263	Basement Level
Min Sarginson Real Estate	53 London Street	03 328 7273	Min Sarginson 027 432 0327
Mondo Vino	42 Norwich Quay	03 328 7744	
Orbit Architecture	5 Norwich Quay	03 328 9294	Neil Aitken 021 155 5601
PedalOn Bicycle Service	2 Exeter Street	03 328 9246	021 055 6865
Port Electric : Computer Appliance Repair	Private Address	03 328 8099	Ken 021 117 6848
Port Hills Auto Centre	42a Norwich Quay	03 328 9980	
Porthole Bar	40 London Street	Private No.	Mike 021 328 977 [Tue-Sun]
Portico	33 London Street	03 328 8088	Tue-Sun 10am - 4pm
Port View Restaurant	23 Dublin Street	03 328 8740	Wed-Sun + Sat-Sun Brunch
Professionals Real Estate	36 London Street	03 328 7707	Lynnette Baird 021 224 6637
Project Lyttelton Office	54a Oxford Street	03 328 9243	Sue-Ellen
Pynenburg and Collins   Architects	PO Box 80, Lyttelton	Private No.	Simon 021 163 7193
Ray White Real Estate	47 London Street	03 331 6757	Marie   Daisy
Roots	8 London Street	03 328 7658	Christy   Guilio 021 120 8083
Rossouw Window Cleaning	Private Address	03 389 9259	Mike 0274 355 239
SAMO Coffee	3 Canterbury Street	Private No.	Open 7 Days
Sno Clothes and Milly May	8a London Street	03 328 8584	Heather
Special Branch NZ   Arborist	Hawkhurst Road	03 328 8303	Tim 022 091 9202
Storm Hairdressing	34 London Street	03 328 8859	Sally   Kat
Tailored Portraits   Photography	Cressy Terrace	03 328 7122	Gillian Taylor 021 047 4415
Thea Mickell Services Ltd   Fundraising	Private Address	03 384 7547	Thea 027 607 7282
The Mindful Body	Private Address	03 328 9923	Janet 027 368 6515
The Rookery	Ross Terrace	03 328 8038	Angus   Rene
Time to Resolve   Mediation Service	Private Address	03 328 8219	Chantal 022 618 8532
View Hairdressing	Private Address	Private No.	Megan 027 488 5173
Volcano Radio	Private Address	03 328 8566	
World Organics Skincare	Private Address	03 328 7446	Nicki 027 423 9455

## Diamond Harbour

Bronwen Jones– Writing and PR Services	Rawhiti Street	03 329 4303	<a href="http://www.bronwen-jones.com">www.bronwen-jones.com</a>
Chalfont Cafe	2 Waipapa Avenue	03 329 4854	7Days 9-4pm +Wed-Sun 'til late
Diamond Harbour Country Store	2 Waipapa Avenue	03 329 4854	7Days 8.30-5.30 +Wed-Sun 'til 7pm
Diamond Harbour Ferry	Waipapa Avenue	03 328 9078	
Diamond Harbour Medical Centre	2a Waipapa Avenue	03 329 4402	
Godley House Cafe	2e Waipapa Avenue	03 329 4880	<a href="http://www.godleyhouse.co.nz">www.godleyhouse.co.nz</a>
Orton Bradley Park	Marine Drive	03 329 4730	
Snowdrop Cottage Children's Store	Waipapa Avenue	03 329 4464	Open 7 Days 9.00am - 5.00pm
Shunyata Retreat   Day Spa	10 Rawhiti Street	03 329 4773	<a href="http://www.journeyessence.com">www.journeyessence.com</a>
Thrive: Chiropractic, Acupuncture, Nutrition	Private Address	03 329 3254	Mark and Lou Warren

## Governors Bay

At Home Childcare Limited	18 Bay Heights	03 329 9970	Neave Ross-Wallace
Governors Bay Hotel	52 Main Road	03 329 9433	
She Chocolat	79 Main Road	03 329 9825	
Living Springs	Bamfords Road	03 329 9788	

# “bite size”

fresh n fabulous places to dine

October 2013

Restaurant	Address	Location	Phone	Hours
<b>Brunch</b>				
Chalfont Cafe	2 Waipapa Avenue	Diamond Harbour	03 329 4854	9am Open Every Day
Civil and Naval	16 London Street	Lyttelton	03 328 7206	9am Saturday   9am Sunday
Coffee Culture	18 London Street	Lyttelton	03 328 7080	8am Open Every Day
Freemans Restaurant	47 London Street	Lyttelton	03 328 7517	9am Saturday   10am Sunday
Godley House Cafe	2e Waipapa Avenue	Diamond Harbour	03 329 4880	9am Wednesday to Sunday
Governors Bay Hotel	52 Main Road	Governors Bay	03 329 9433	8am Open 7 Days
Port View Restaurant	23 Dublin Street	Lyttelton	03 328 8740	11am Saturday   11am Sunday
SAMO Coffee	3 Canterbury Street	Lyttelton	Private No.	8am Open 7 Days
She Chocolat	79 Main Road	Governors Bay	03 329 9825	10am Weekdays   9am Weekends
<b>Lunch</b>				
Chalfont Cafe	2 Waipapa Avenue	Diamond Harbour	03 329 4854	Open Every Day
Civil and Naval	16 London Street	Lyttelton	03 328 7206	Open Every Day from 11am
Everest Indian Restaurant	2 London Street	Lyttelton	03 328 8185	Open Every Day
Fishermans Wharf	39 Norwich Quay	Lyttelton	03 328 7530	Friday to Sunday
Freemans Restaurant	47 London Street	Lyttelton	03 328 7517	Saturday   Sunday
Godley House Cafe	2e Waipapa Avenue	Diamond Harbour	03 329 4880	Wednesday to Sunday
Governors Bay Hotel	52 Main Road	Governors Bay	03 329 9433	Open Every Day
Irish Pub	17a London Street	Lyttelton	03 328 8085	Open Every Day
Lyttelton Bakery	6 Norwich Quay	Lyttelton	03 328 9004	Monday to Saturday
Porthole Bar	40 London Street	Lyttelton	021 328 977	Open Every Day
Port View Restaurant	23 Dublin Street	Lyttelton	03 328 8740	Wednesday to Sunday from 11am
Roots	8 London Street	Lyttelton	03 328 7658	Thursday   Friday
SAMO Coffee	3 Canterbury Street	Lyttelton	Private No.	Monday to Sunday from
She Chocolat	79 Main Road	Lyttelton	03 329 9825	Open Every Day
<b>Dinner</b>				
Chalfont Cafe	2 Waipapa Avenue	Diamond Harbour	03 329 4854	Wednesday to Sunday
Civil and Naval	16 London Street	Lyttelton	03 328 7206	Open Every Day
Everest Indian Restaurant	2 London Street	Lyttelton	03 328 8185	Open Every Day
Fishermans Wharf	39 Norwich Quay	Lyttelton	03 328 7530	Friday to Sunday
Freemans Restaurant	47 London Street	Lyttelton	03 328 7517	Open Every Day
Godley House Cafe	2e Waipapa Avenue	Diamond Harbour	03 329 4880	Friday   Saturday
Governors Bay Hotel	52 Main Road	Governors Bay	03 329 9433	Open Every Day
Irish Pub	17a London Street	Lyttelton	03 328 8085	Open Every Day
Porthole Bar	40 London Street	Lyttelton	Private No.	Open Every Day
Port View Restaurant	23 Dublin Street	Lyttelton	03 328 8740	Wednesday to Sunday
Roots	8 London Street	Lyttelton	03 328 7658	Tuesday to Saturday
Tommy Chang's	48 London Street	Lyttelton	Private No.	Wednesday to Sunday
<b>Take Away</b>				
Everest Indian Restaurant	2 London Street	Lyttelton	03 328 8185	4pm - 8pm Every Day
Fishermans Wharf	39 Norwich Quay	Lyttelton	03 328 7530	11am - 8pm Tue to Sun
London Street Fish and Chips	34 London Street	Lyttelton	03 328 8819	11am - 8pm Every Day
Lyttelton Bakery	6 Norwich Quay	Lyttelton	03 328 9004	7am - 3pm Mon to Sat
Lyttelton Sea Foods	6 Norwich Quay	Lyttelton	03 328 7628	11am - 8pm Every Day
Port View Restaurant	23 Dublin Street	Lyttelton	03 328 8740	4pm - 8pm Wed to Sun
<b>BYO</b>				
Mondo Vino	42 Norwich Quay	Lyttelton	03 328 7744	10am Open Every Day
<b>Create Your Own</b>				
Chalfont Cafe [General Store]	2 Waipapa Avenue	Diamond Harbour	03 329 4854	9am Open Every Day
Harbour Co-Op	12 London Street	Lyttelton	03 328 8544	9am Open Every Day
Harris & Turner	8 London Street	Lyttelton	03 328 7358	Mon - Sat 10am to 6pm
London Street Dairy	34 London Street	Lyttelton	03 328 7358	8am Open Every Day
Lyttelton Farmers Market	On London Street	Lyttelton	03 328 9243	10am Every Saturday



# “accommodation”

places to stay around the harbour

October 2013

## Lyttelton

- **Canterbury Street Apartment.** Fully renovated one bedroom apartment ideal for short term or holiday stay accommodation. Completely self contained with separate living space, kitchenette, bedroom and bathroom. Spread over two floors this furnished apartment will feel like a home away from home. Tariff from \$120 per night. Phone Gloria 03 328 7065 or mobile 022 073 0014.
- **Dockside Apartments.** Three private apartments enjoying harbour views and available for casual holiday or short term occupancy. Scenic and close to London Street, an ideal option for friends or family. Options range from studio; one bedroom or two bedroom apartment. Tariff from \$90 - \$120 per night. Phone Grant or Kathy 03 325 5707 or view more details online [www.dockside.co.nz](http://www.dockside.co.nz).
- **No.1 Apartment.** Warm two bedroom apartment with magnificent harbour views available for holiday or short term accommodation. Undercover parking. Tariff \$120 per night with minimum three night stay. Longer rates available on enquiry. Phone Linda 03 328 9128 or 021 254 4986.
- **Randolph Apartment.** Private two bedroom modern apartment with superb views across Lyttelton available for holiday or short term accommodation. Apartment features private spa, off street parking and all the mod-cons including WIFI. Tariff from \$120.00 per day, with minimum three night stay. Longer term rates available. Phone Heather 03 328 8585 or 03 328 8584.
- **The Rookery.** Built in 1866 The Rookery Bed and Breakfast is one of the oldest surviving local cottages, with wonderful panoramic views of the historic port town of Lyttelton. Three renovated rooms are available; one with ensuite facilities. Tariff from \$115 to \$160 per night. Phone Angus or Rene Macpherson on 03 328 8038 or view more details on line [www.therookery.co.nz](http://www.therookery.co.nz).

## Diamond Harbour

- **Bryneth's Cottage** located on Purau Avenue. Luxury room, queen bed and spa bath. cooked breakfast or brunch. Only available Friday to Monday \$200 per night. Phone 03 329 4728 or 021 315 609
- **Diamond Harbour Lodge** is the place to relax, enjoy and unwind. Harbour sea views, spacious rooms, TV/DVD, CD player, large selection of books, games, free wireless internet, fridge, microwave, under floor heating in bathroom, heated towel rail, linden leaves toiletries, towelling bath robes. Robyn and Pete Hedges 3 329 4005 or visit [www.diamondharbourlodge.co.nz](http://www.diamondharbourlodge.co.nz)
- **Manaaki Eco Farmstay Purau** offers self contained ensuite accommodation. One or two bedrooms with spacious fully equipped kitchen/living in a beautiful rural setting overlooking Purau Bay. Holiday (min 2 nights) or longer term rates available. Contact Wendy ph 329 3202 or view us online [www.ecofarmstaypurau.co.nz](http://www.ecofarmstaypurau.co.nz)
- **Orton Bradley Park** offer self contained camper van sites for overnight stays. Services include 15 powered sites; treated drinking water; toilet blocks and dump site, with the golf club and tennis court next door. Fees start from \$15.00 per night for two persons, with additional adults at \$6.00 per night. Contact 03 329 4730.

## Governors Bay

- **Camellia Cottage Bed and Breakfast** is a self contained cottage in a lovely garden setting. Room \$110 per night double or \$75 per night for a single. Contact Faye, 30 Zephyr Terrace, Governors Bay 03 329 9119
- **Governors Bay Bed and Breakfast** offers a place to relax and rejuvenate on nine acres to bush side paradise beside the harbour. Furnished room with ensuite bathroom and separate sitting area also available for short term rent for those seeking emergency accommodation. For more details contact Eva on 03 329 9727, or view on line [www.gbbedandbreakfast.co.nz](http://www.gbbedandbreakfast.co.nz).
- **Governors Bay Hotel** restored to it's former glory and offers six guest rooms located on the first floor level. All rooms renovated with 32 inch flat screen televisions, queen size beds, free wifi, heaters and vanities. Four rooms with direct verandah access with views over the Lyttelton harbour. Contact 03 329 9433 or view more details on line: [www.governorsbayhotel.co.nz](http://www.governorsbayhotel.co.nz).
- **Governors Bay Studio** is an upmarket studio with ensuite, wifi, sky television, kitchenette. Located by the water and beach. Lovely garden setting. Bed and breakfast \$180 - \$200 per night. Preferable short stays 2-3 nights. Contact Rosie Belton 027 228 7019.
- **Living Springs** offer an array of accommodation options from fully service private rooms, studios, twin rooms, shared bunkrooms to outdoor camping. Also available are some powered caravan sites. All rooms are clean, comfortable and well maintained for your relaxation. Contact Living Springs on 03 329 9788 or view more details on line: [www.livingsprings.co.nz](http://www.livingsprings.co.nz).

# “harbour vibe”

what's on around the harbour this week

October 2013

## 02 Wednesday

Knit and Yarn Group	10.00am	Lyttelton Library, London Street	All Welcome. Bring your next project.
Plunket Play Group	10.00am	Lyttelton Main School	All Welcome. Andrea Solzer 328 9346
Community Garden	10.00am	The Portal, 54a Oxford Street	Shared lunch from 12.00pm
Bunjinkan Classes	7.00pm	Union Church, Winchester Street	Contact Shaun 027 231 6881
Adam McGrath and Jess Shanks	8.00pm	Wunderbar, London Street	Live Music
Hannah Harding Live	8.30pm	Porthole Bar, London Street	Free Event

## 03 Thursday

Governors Bay Pre-School Music	9.15am	Governors Bay School Library	All Under 5s Welcome with Adult   \$3.50
Lyttelton Volunteer Fire Brigade	7.00pm	Lyttelton Fire Station	Weekly Training   New Members Welcome
Governors Bay Volunteer Fire Brigade	7.00pm	Governors Bay Fire Station	Weekly Training   New Members Welcome
Contra Dance Night	7.30pm	Private Address, Cass Bay	Contact Bill 03 328 8985   \$5
Taos Trio Live	8.30pm	Porthole Bar, London Street	All Welcome   Free Event

## 04 Friday

Baby Time	10.30am	Lyttelton Library, London Street	Stories, Rhymes, Activities   Under 2yrs old
Live Music	7.00pm	Lyttelton Club, Dublin Street	All Welcome   Free Event

## 05 Saturday

Lyttelton Kura Festival of Learning	-	All Over Lyttelton	<a href="http://www.lyttelton.net.nz">www.lyttelton.net.nz</a>
Lyttelton Farmers Market	10.00am	London Street, Lyttelton	Fresh produce; Live Music; Buskers and More
Lyttelton Garage Sale	10.00am	The Portal, 54a Oxford Street	Second Hand Bargains and More
Lyttelton Arts Space	10.00am	No.6 London Street	Local Artists and Exhibition Space
Plenty to Share	-	Cnr London and Canterbury	Bring, Exchange and Share Food

## 06 Sunday

Lyttel Soccer	10.00am	Rugby Soccer Grounds	End of Godley Quay: Ages 3-9 All Welcome
Combined Church Service	10.00am	Union Church, Winchester Street	All Welcome
Live Jazz Sundays	3.00pm	Freemans, London Street	Carmel Courtney Live   Free
Black Velvet Band	3.00pm	Governors Bay Hotel	Live Music to 5.00pm   Free
Vinyl Appreciation	3.00pm	Tommy Chang's	Listen to Rotten Radio Live!   Free
Afternoon Jam with Barry	3.30pm	Porthole Bar, London Street	Free Event
St Josephs Worker Catholic Church	5.30pm	21 Exeter Street, Lyttelton	All Welcome

## 07 Monday

Plunket Play Group	10.00am	Lyttelton Main School	All Welcome. Andrea Solzer 328 9346
--------------------	---------	-----------------------	-------------------------------------

## 08 Tuesday

Story Time	10.00am	Lyttelton Library, London Street	Stories, Rhymes, Activities   2-4yr olds
Lyttelton Health Qigong for Seniors	10.15am	Union Church, Winchester Street	Geraldine Parkes 03 328 7284
Community House Shared Lunch	12.00pm	Comm.House, 7 Dublin Street	Make new friends
Lyttelton St John Youth Division	6.00pm	St John Ambulance Station	52 London St, Lyttelton
Artist Showcase and Mic Night	7.30pm	Wunderbar, London Street	Fresh Talent Live   Free Event

Lyttelton Harbour Review is proudly sponsored by:



Lynnette Baird | Licensed Real Estate Agent  
P: 03 328 7707 M: 021 224 6637  
E: [lynnette@realhomes.co.nz](mailto:lynnette@realhomes.co.nz)  
W: [www.realhomes.co.nz](http://www.realhomes.co.nz)



# Professionals

Kennard Real Estate Limited MREINZ  
[www.kre.co.nz](http://www.kre.co.nz)

